



OFFICIAL NOTICE AND AGENDA - AMENDED

of a meeting of a City Board, Commission, Department
Committee, Agency, Corporation, Quasi-Municipal
Corporation, or Sub-unit thereof.

Meeting: **BICYCLE AND PEDESTRIAN ADVISORY COMMITTEE**
Members: Jonathan Smith (Chair), Tom Neal, Terry Kilian, Susan Schmidt, Chris Filtz, Ben Gerhards, Veronica Hope
Location: Maple Room, First Floor, City Hall
Date/Time: **Monday, Jul 22, 2024 at 5:00 p.m.**

1. Welcome and Introductions
2. Public Comment
3. Approve the Minutes of June 24, 2024 Meeting (2 minutes)
4. Discussion and Possible Action: Short and Long term goals of the Committee (10 mins)
5. Discussion and Possible Action: Bike Share System Contract renewal (5 mins)
6. Discussion and Possible Action: Implementation of the Safe Routes To School Plan – overview of John Muir Middle School (10 minutes)
7. Discussion and Possible Action: Pavement Marking Priorities (10 mins)
8. Discussion and Possible Action: Bike Rack requests from Children’s Imaginarium and Glass & Grain House (5 mins)
9. Updates: Merrill Trail Information Meeting, Schofield Bridge Information Meeting (3 mins)
10. Community Events: Avenues of Possibilities Event at Forward Beverage Co August 21, 5-7pm
<https://www.avenuesofpossibilities.com/events/avenues-of-possibilities-tour-wausau>
11. Items for Future Agendas
12. Next Meeting Date: August 26, 2024
13. Adjourn

It is likely that members of, and a quorum of the Council and/or members of other committees of the Common Council of the City of Wausau will be in attendance at the abovementioned meeting to gather information. **No action will be taken by any such groups.**

Questions regarding this agenda may be directed to the City Planning Office @ (715) 261-6760.

In accordance with the requirements of Title II of the Americans with Disabilities Act of 1990 (ADA), the City of Wausau will not discriminate against qualified individuals with disabilities on the basis of disability in its services, programs or activities. If you need assistance or reasonable accommodations in participating in this meeting or event due to a disability as defined under the ADA, please call the ADA Coordinator at (715) 261-6622 or ADAServices@ci.wausau.wi.us to discuss your accessibility needs. We ask your request be provided a minimum of 72 hours before the scheduled event or meeting. If a request is made less than 72 hours before the event the City of Wausau will make a good faith effort to accommodate your request.

This Notice was posted at City Hall and emailed to the Media on 07/18/2024

Any person wishing to offer public comment may e-mail **City Clerk Kaitlyn Bernarde** at **clerk@ci.wausau.wi.us** with "BPAC Public Comment" in the subject line prior to the meeting start. All public comment, either by email or in person, will be limited to items on the agenda at this time. The messages related to agenda items received prior to the start of the meeting will be provided to the Chair.

Other Distribution: Media, Alderpersons, Mayor, City Departments

MINUTES

June 24, 2024

Members Present: Tom Neal, Terry Kilian, Chris Filtz, Jonathan Smith

Others Present: Jillian Kurtzhals, Paul Kage, TJ Niksich

Location: City Hall, Maple Room

In compliance with Chapter 19, Wisconsin Statutes, notice of this meeting was posted and transmitted to the Wausau Daily Herald in the proper manner.

1. Welcome and Introductions

Smith called the meeting to order at 5:00 p.m.

2. Public Comment

Paul Kage: Noted that the large public bike rack was not placed on the 400 Block yet. He reached out to Wausau Events about this but did not see any difference. He wonders why it is not an automatic item to place.

3. Approve minutes of May 29, 2024 Meeting

Motion/second by Neal/Kilian. Passed unanimously.

4. Discussion and Possible Action: Implementation of the Safe Routes To School Plan

Smith noted that the Plan is very large and how to start implementing it is a daunting task. Lynch noted that it was passed in I&F and the School District is expected to take it up at the next meeting. Kurtzhals said that a speed study was requested for Grant Elementary and a stop sign. PD has not yet analyzed the speed data yet. Smith suggested looking at each school's plan and see what is actionable and near term. Neal suggested further studies may be needed before changes to signs and streets to adhere to standards. Lynch noted that most of the city recommendations are signage and markings which are relatively inexpensive. Smith wants to see some larger batches of projects so there can be some quick progress. Neal requested crash and speed data and school input for the next meeting.

5. Discussion and Possible Action: Additional Rectangular Rapids Flashing Beacons (RRFB) locations

The current locations of the RRFB's were located on the map in the packet. The criteria used to evaluate the need for a crossing was included from a previous Engineering staff report. Neal asked if there were any issues with the criteria regarding the proposed crossing at the Thomas St bridge for the River Edge trail. Lynch noted that it meets the criteria but some study would have to be done for

the pedestrian volume and stopping distance. Nicksich felt confident it would meet the requirements. He suggested waiting on further measures there until it could be observed. Kilian reported traffic being very fast on Thomas St at many hours of the day. Smith also noted that he uses Thomas to commute and his crossing is difficult. Neal suggested another location may be the 3rd street crossing with the YMCA. Lynch noted that with the onstreet parking and crossing bump outs that most infrastructure options are exhausted. Lights may not be effective. Smith also noted Grand and Manson St, Grand and Bernard, Bridge and 6th Ave, 12th Ave and Thomas St. Kilian suggested more traffic controls to slow down traffic on Thomas Street.

6. Discussion and Possible Action: Public Input on Street Route for River Edge trail

Lynch showed the 90% design documents for the bid package for the River Edge trail segment south of Thomas Street. He noted that there is a section that narrows down to 8 feet wide due to the space constraint but that it is possible because this is locally funded. Neal asked if there was a possibility of continuing the paved path instead of the on street route. Lynch noted that there was no room for an easement and eminent domain was not possible. Kilian noted that people on Adolph St would not like additional car traffic and by directing people to DC Everest or Riverside Parks it would be good. Lynch noted that it was never an intention to have Adolph St serve as a trailhead. Lynch asked the committee to consider the possible on street routes before seeking public input on the route choices. Committee was asked to walk/bike the routes and consider the options. Lynch expects a mailing with an online or phone survey option. Kilian noted that when she has walked in that area that it was very quiet and little car traffic. Kilian asked what kind of traffic the trail could generate. Lynch had no projections.

7. Discussion and Possible Action: Pavement Marking Priorities

No documents were prepared on this item. Kage mentioned the intersection of 5th and Scott as the westbound turn was creating an unsafe situation. Nicksich noted that a remedy couldn't be permanent because of snow removal. Kage suggested signage.

8. Updates and Community Events: Mayor's Ride recap, Public Input opportunities (Wausau to Merrill trail – June 20, Schofield Bridge project)

There were 15-20 people at the Mayor's Ride and everything went well.

Public Information Meeting on June 27 for the trail to Brokaw.

Public Information Meeting on July 18 for the bridge on the Eau Claire River.

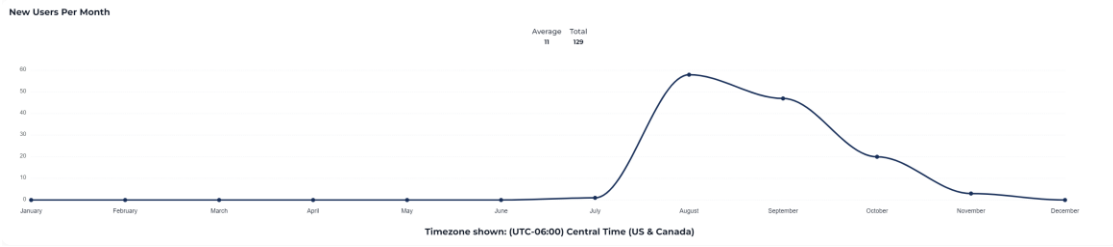
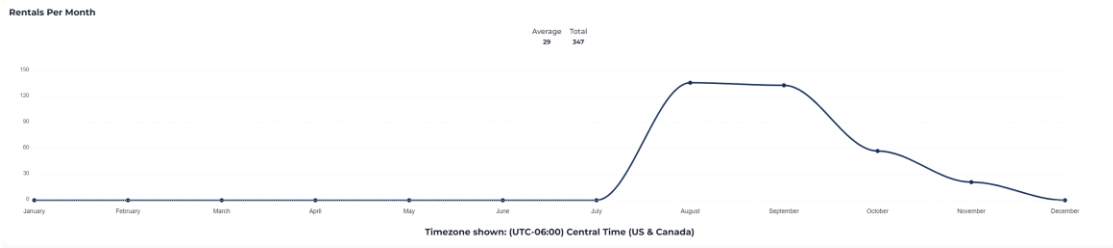
9. Next meeting date: July 22, 2024

10. Adjourn

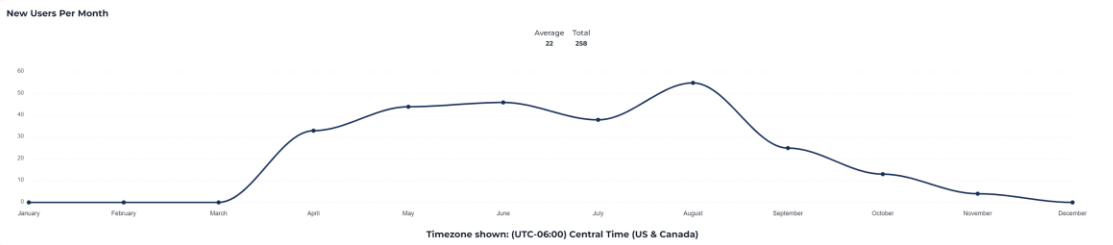
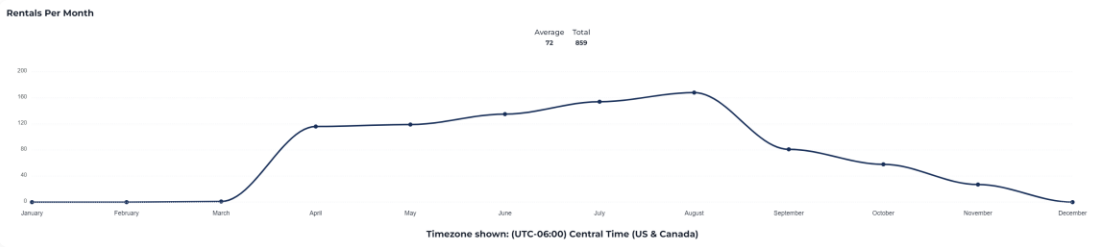
Motion/second by Neal/Kilian to adjourn. Passed unanimously. Meeting ended at 6:05p.m.

City of Wausau Bikeshare Data

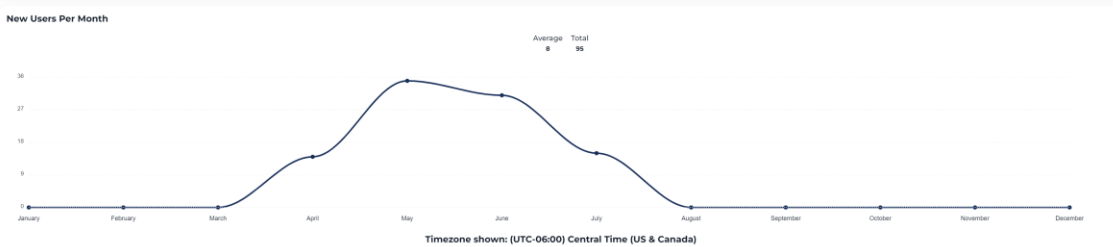
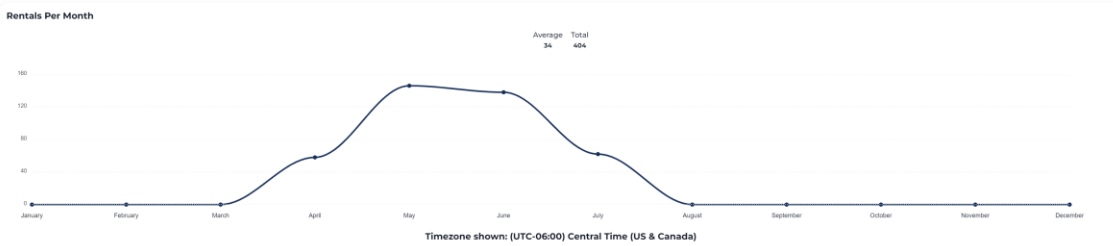
2022



2023



2024



Safe Routes to School: John Muir Middle School

Proposed steps to be completed by City/City

[Full report linked here](#)
JMMS from page 3 of 47

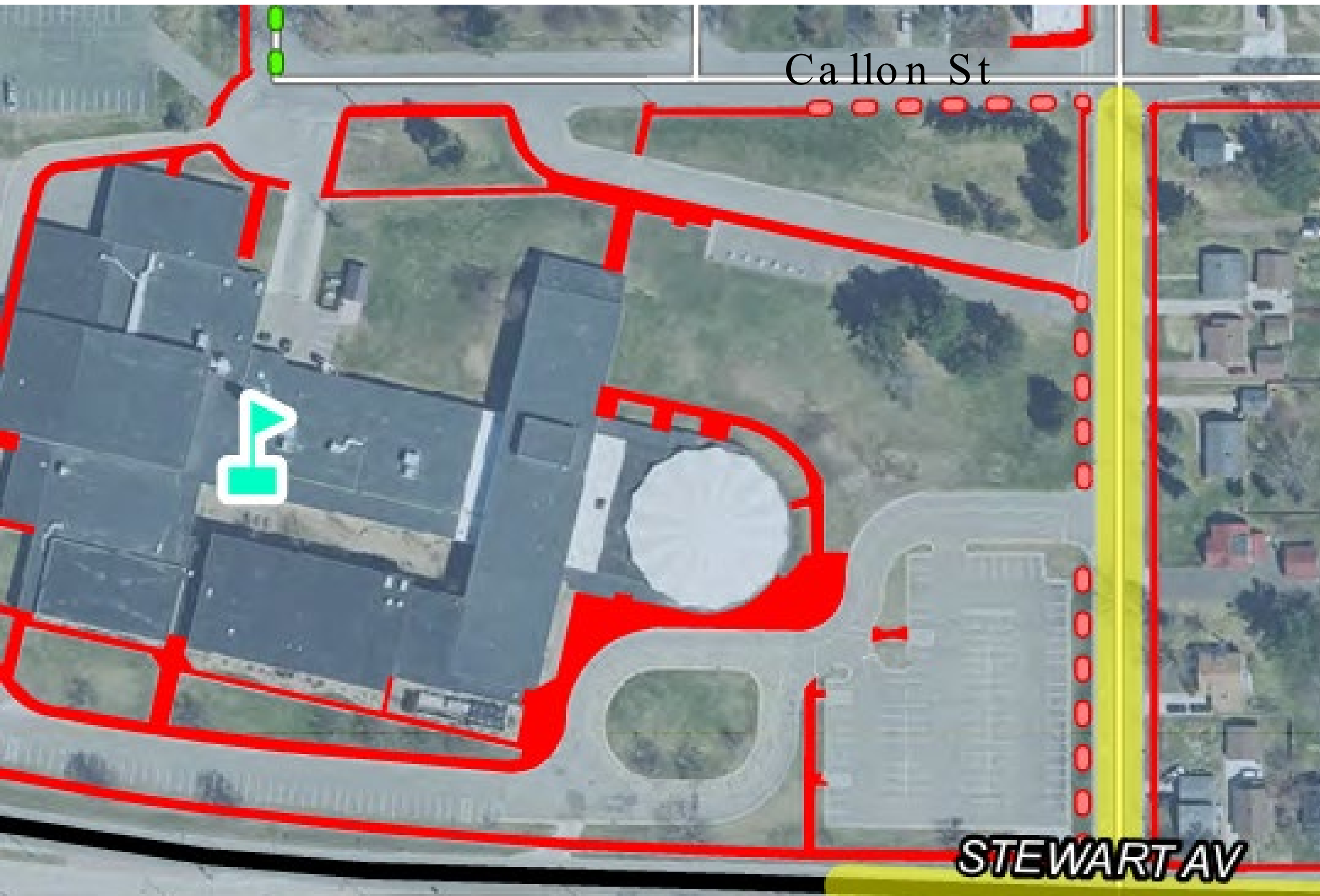
Engineering



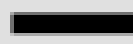

Medium-term

Responsible party: City Eng.



Recommendation: Add sidewalks to west side of 12th Ave from Stewart Ave, north to Callon St.



Legend

-  John Muir Middle School
-  U.S. Highway
-  State Highway
-  Local Roads
-  Sidewalk
-  15 MPH School Speed Limit
(Includes Higher Fine Zone)

Recommendations

-  Proposed Sidewalk
-  Proposed 7' Urban
Shoulders and Centerline

Medium-term



Responsible parties: City Eng, Apartment Owner.

Recommendation: Add sidewalks to 14th Ave as shown on map.


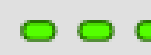
Neighborhoods

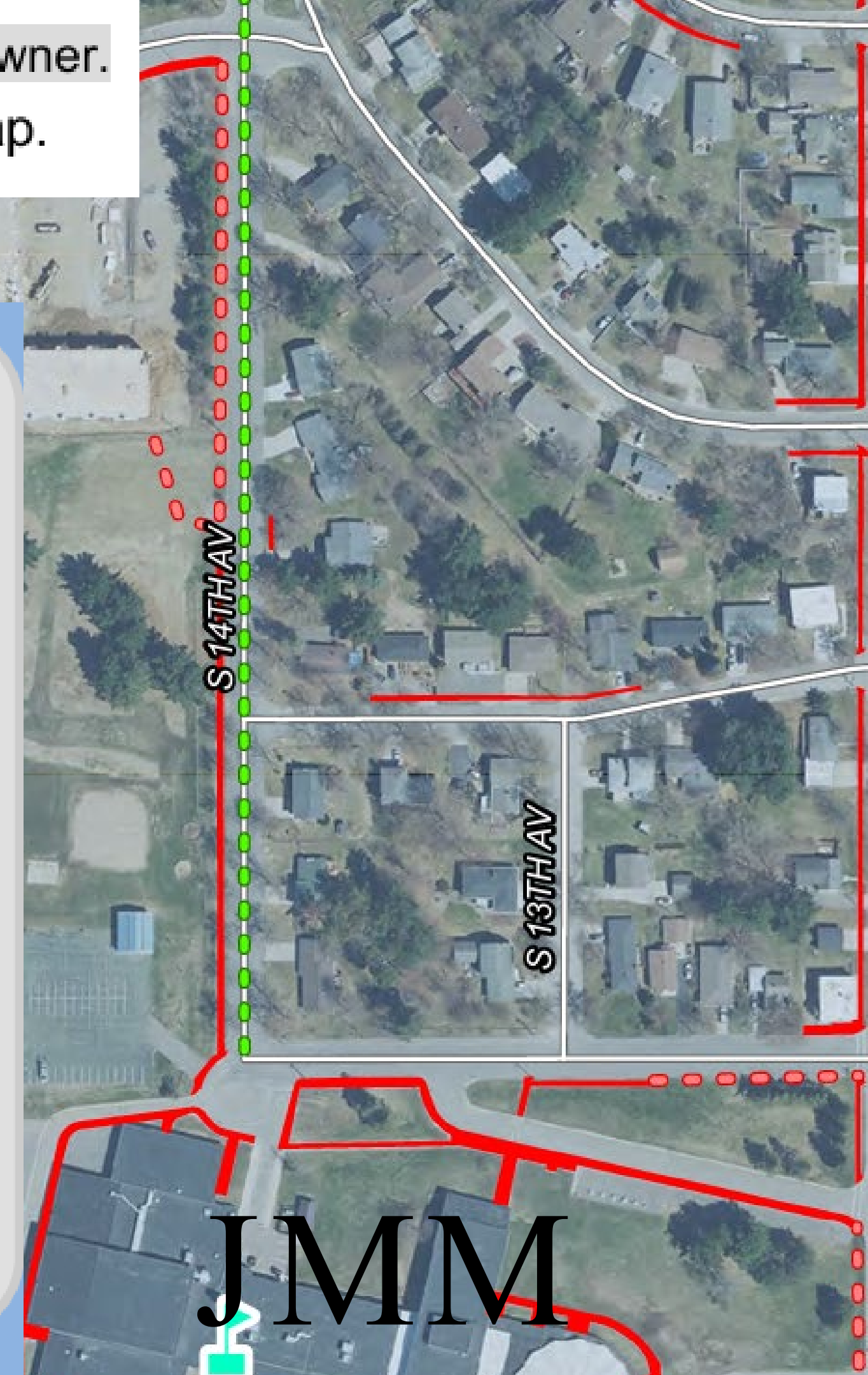
- * Add sidewalks to west side of 12th Ave from Stewart Ave, north to Callon St.
- * Add sidewalks to 14th Ave as shown on map.
- * Add 7-foot wide white line urban shoulders to 14th Ave and yellow centerline as shown on map.

Legend

-  John Muir Middle School
-  U.S. Highway
-  State Highway
-  Local Roads
-  Sidewalk
-  15 MPH School Speed Limit (Includes Higher Fine Zone)

Recommendations

-  Proposed Sidewalk
-  Proposed 7' Urban Shoulders and Centerline

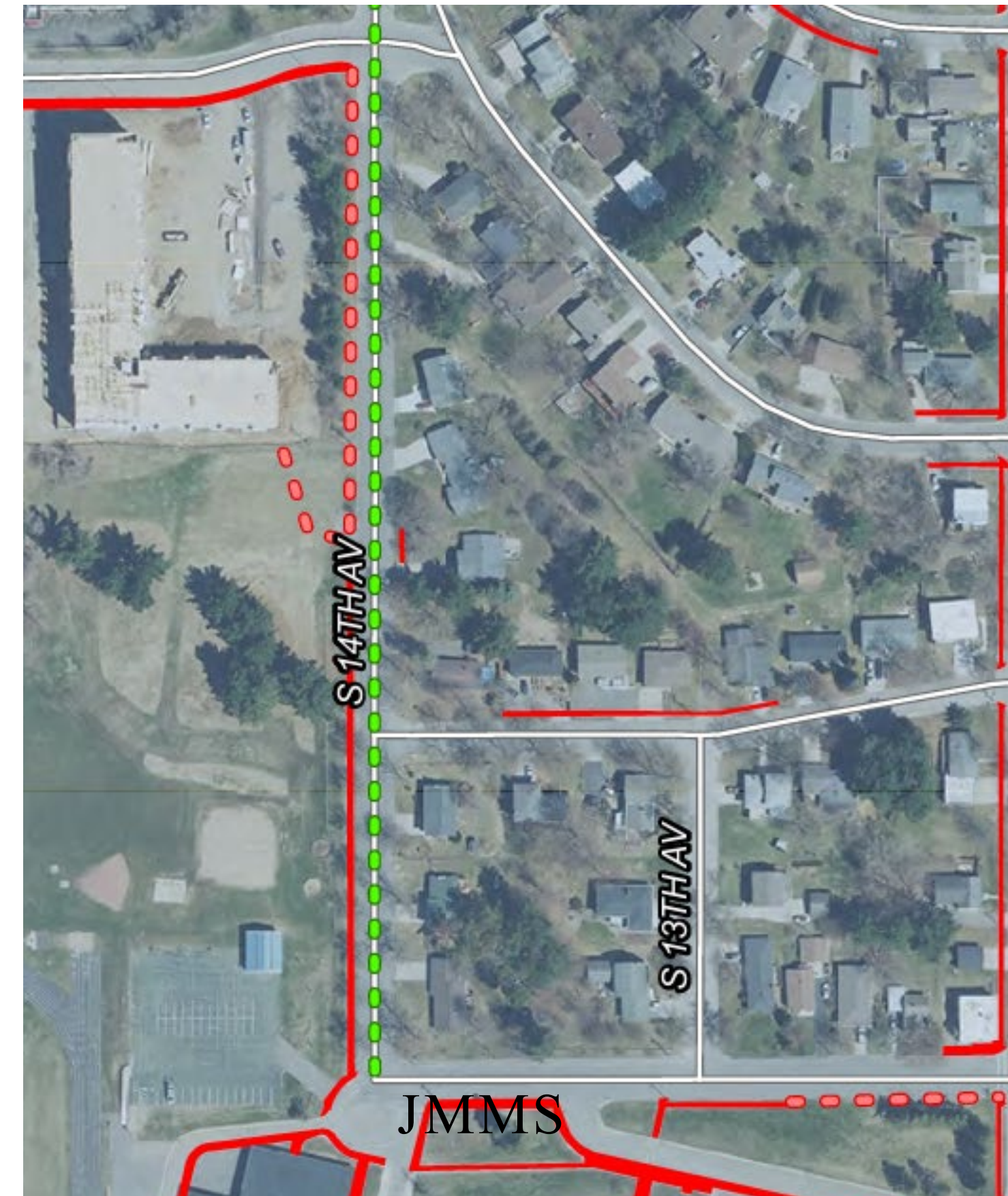
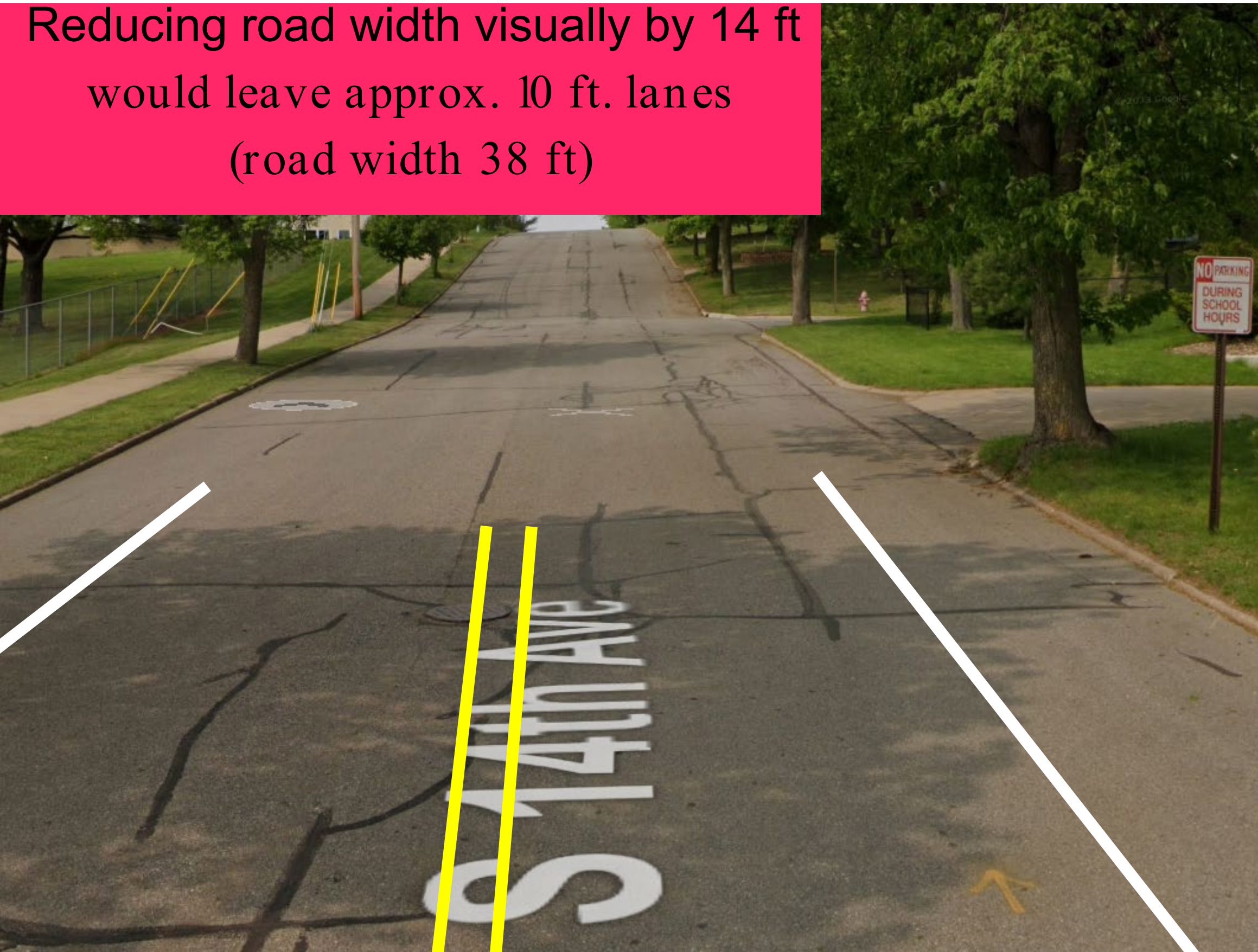


Medium-term

Responsible party: City Eng.

Recommendation: Add 7-foot wide white line urban shoulders to 14th Ave and yellow centerline as shown on map.

Reducing road width visually by 14 ft would leave approx. 10 ft. lanes (road width 38 ft)





**John Muir
Middle School**

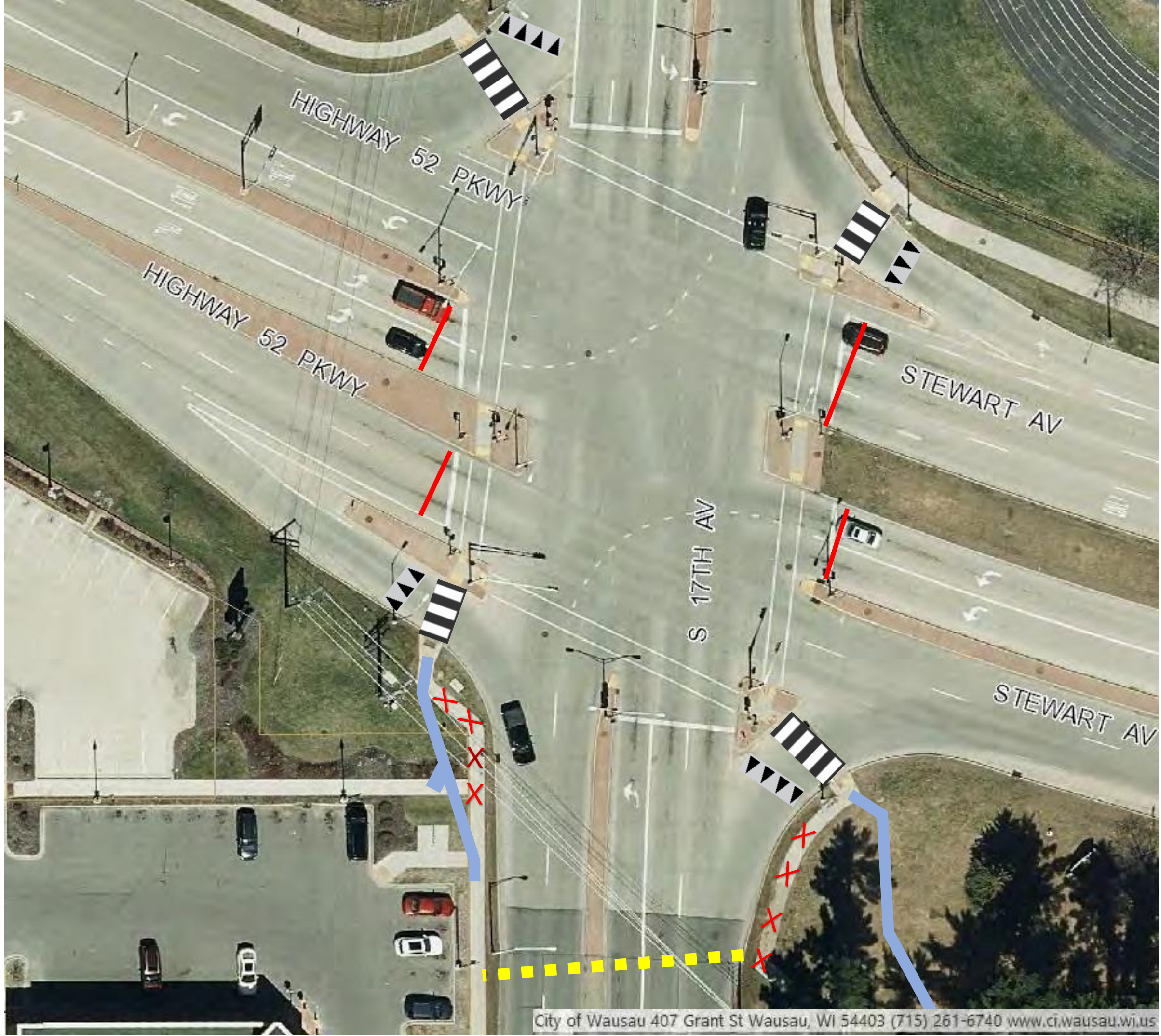
Panel 1

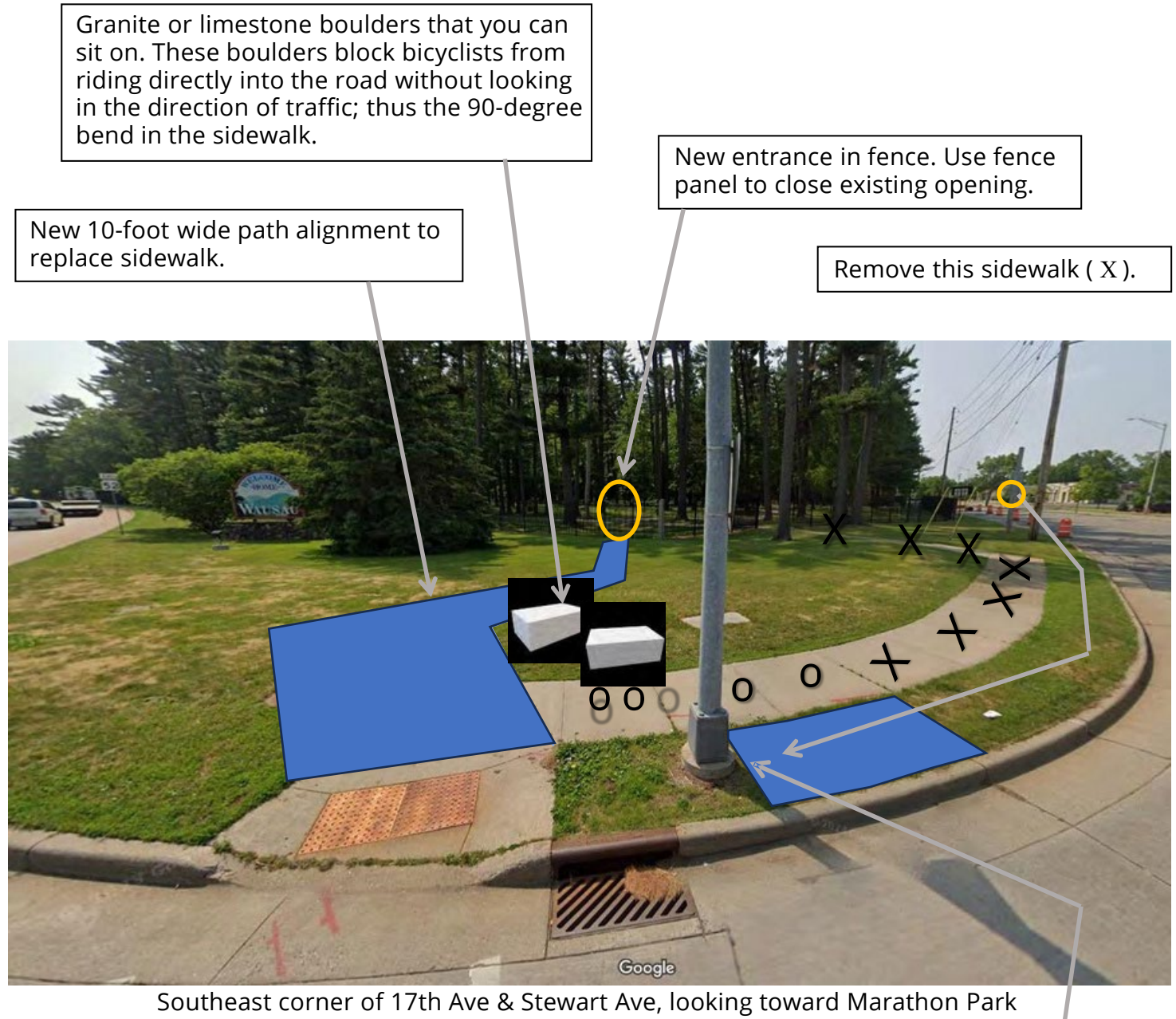
17th Ave & Stewart Ave Improvements

Medium-term Responsible parties: City Eng & Parks Dept.

Recommendations: Improve pedestrian safety through the following improvements.

1. Program traffic light to have concurrent pedestrian signal phasing (automatic walk signals), and split phasing when button is pushed (green turn arrow is postponed and converted to flashing yellow after protected pedestrian walk time ends).
2. East leg of this intersection does not allow enough time for a pedestrian to cross both westbound and eastbound lanes. Either extend the walk signal or split the signal and add 2 buttons on the median.
3. On all 4 right-turn slip lanes, change Yield to Stop, and mark crosswalks as high visibility.
4. Move various **Stop lines** per diagram below. Stop lines that are painted perpendicular to traffic increases crosswalk visibility when crosswalks are not perpendicular to traffic.
5. To stop walkers from cutting across 17th Ave at this location (), promote use of crosswalks (relocating sidewalks ) and Marathon Park pedestrian access through fence per diagram below and on next page.





Either move bus stop from this location on northbound 17th Ave that is next to the park fence to this location in the slip lane, or move the bus stop south to a point next to the gated driveway into Marathon Park and provide a Pedestrian Hybrid Beacon (or possibly other beacons) to cross 17th Ave between bus stops. If the bus stop is not moved to this location, then remove the additional sidewalk squares ().

Map 3A **DRAFT**
Site Assessment

John Muir Middle School

Wausau Safe Routes To School

Legend

- John Muir Middle School
- School Entrance
- Bike Rack
- Parked Family Vehicle
- Bus Stop with Route ID
- Crossing Guard
- Rapid Flash Crosswalk
- Advance Flash Beacon
- Traffic Light
- School Crossing
- Posted Speed Limit
- Stop Sign
- 15 MPH School Speed Limit (Includes Higher Fine Zone)
- High Visibility Crosswalk
- Sidewalk

0 105 210 420 Feet



Source: WI DNR, WisDOT, NCWRPC, City of Wausau
 This map is neither a legally recorded map nor a survey and is not intended to be used as one. This drawing is a compilation of records, information and data used for reference purposes only. NCWRPC is not responsible for any inaccuracies herein contained.



Prepared By:
 North Central Wisconsin Regional Planning Commission

210 McClellan St., Suite 210, Wausau, WI 54403
 715-849-5510 - staff@ncwrpc.org - www.ncwrpc.org

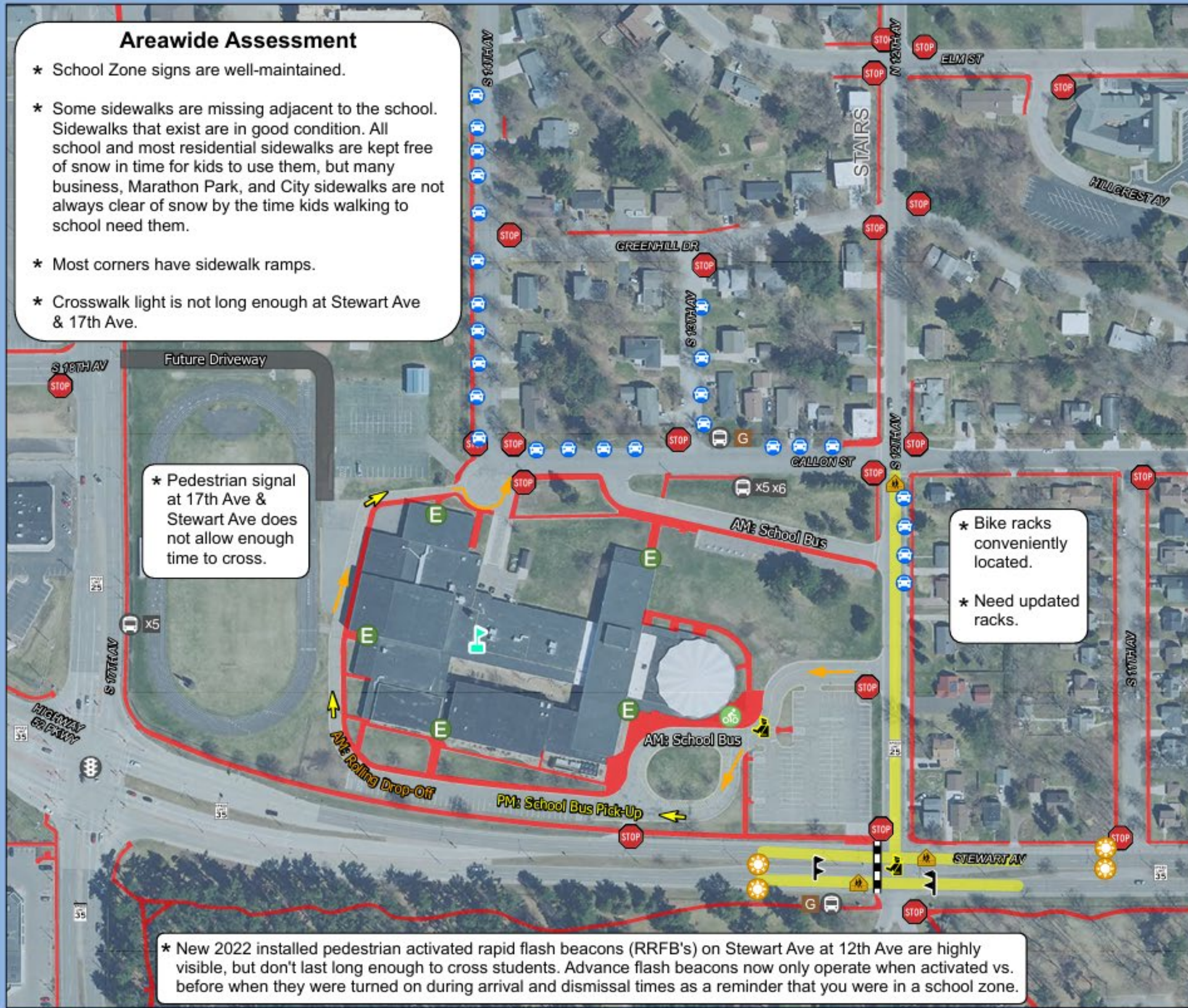
Areawide Assessment

- * School Zone signs are well-maintained.
- * Some sidewalks are missing adjacent to the school. Sidewalks that exist are in good condition. All school and most residential sidewalks are kept free of snow in time for kids to use them, but many business, Marathon Park, and City sidewalks are not always clear of snow by the time kids walking to school need them.
- * Most corners have sidewalk ramps.
- * Crosswalk light is not long enough at Stewart Ave & 17th Ave.

* Pedestrian signal at 17th Ave & Stewart Ave does not allow enough time to cross.

* Bike racks conveniently located.
 * Need updated racks.

* New 2022 installed pedestrian activated rapid flash beacons (RRFB's) on Stewart Ave at 12th Ave are highly visible, but don't last long enough to cross students. Advance flash beacons now only operate when activated vs. before when they were turned on during arrival and dismissal times as a reminder that you were in a school zone.

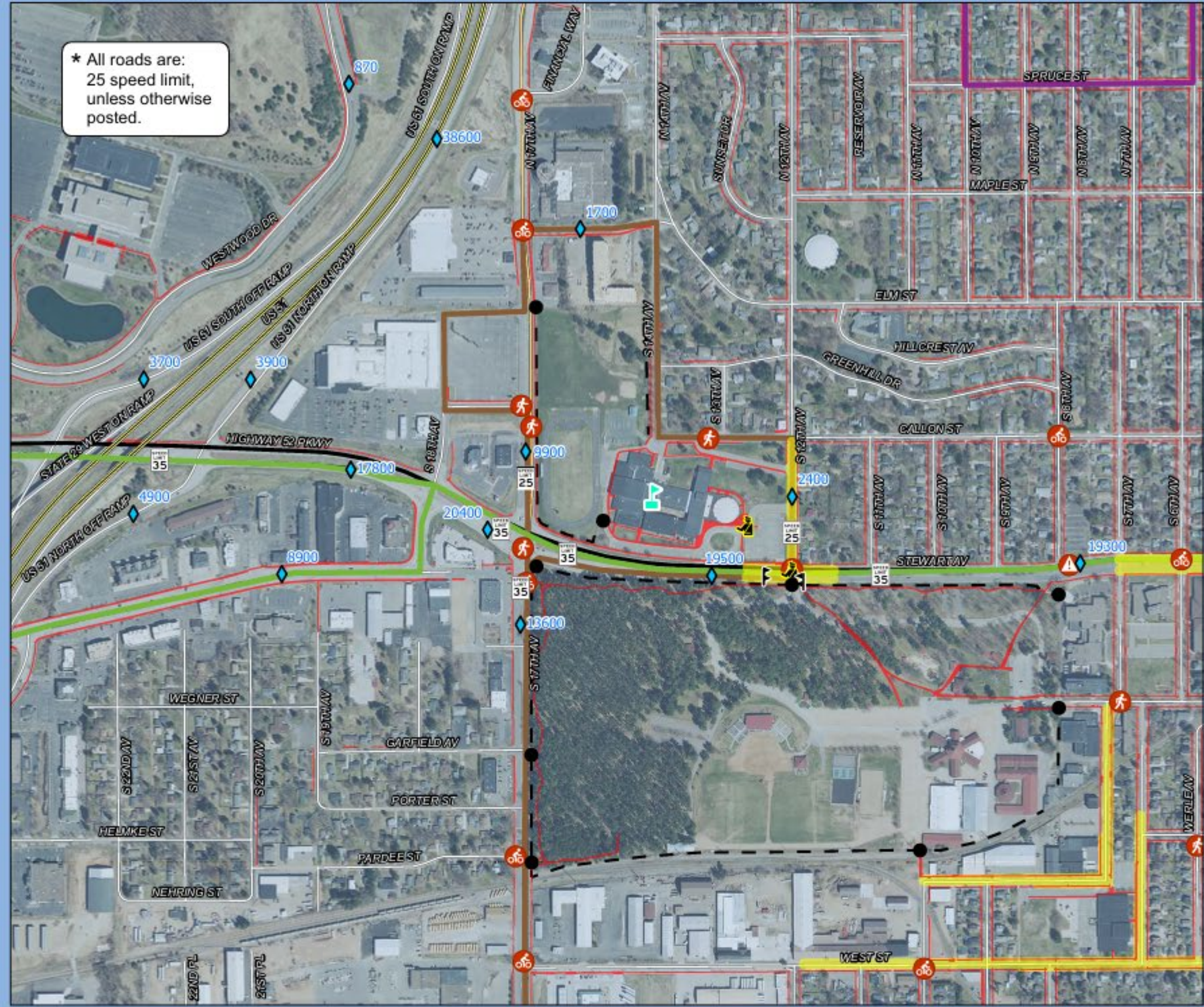


Map 4A **DRAFT**
Transportation

John Muir Middle School

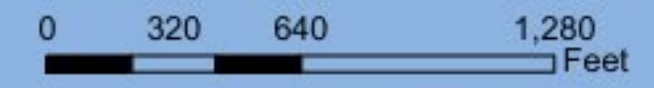
Wausau Safe Routes To School

* All roads are:
 25 speed limit,
 unless otherwise
 posted.



Legend

- John Muir Middle School
- U.S. Highway
- State Highway
- Main Roads
- Local Roads
- MetroRide Bus Route D
- MetroRide Bus Route G
- MetroRide Bus Route I
- Sidewalk
- Fence
- 15 MPH School Speed Limit (Includes Higher Fine Zone)
- Crossing Guard
- Rapid Flash Crosswalk
- Access Through Fence
- Traffic Counts
- Posted Speed Limit
- Crash Type (2010-2020)**
- Bicycle
- Pedestrian
- Both



Source: WI DNR, WisDOT, NCWRPC, City of Wausau
 This map is neither a legally recorded map nor a survey and is not intended to be used as one. This drawing is a compilation of records, information and data used for reference purposes only. NCWRPC is not responsible for any inaccuracies herein contained.



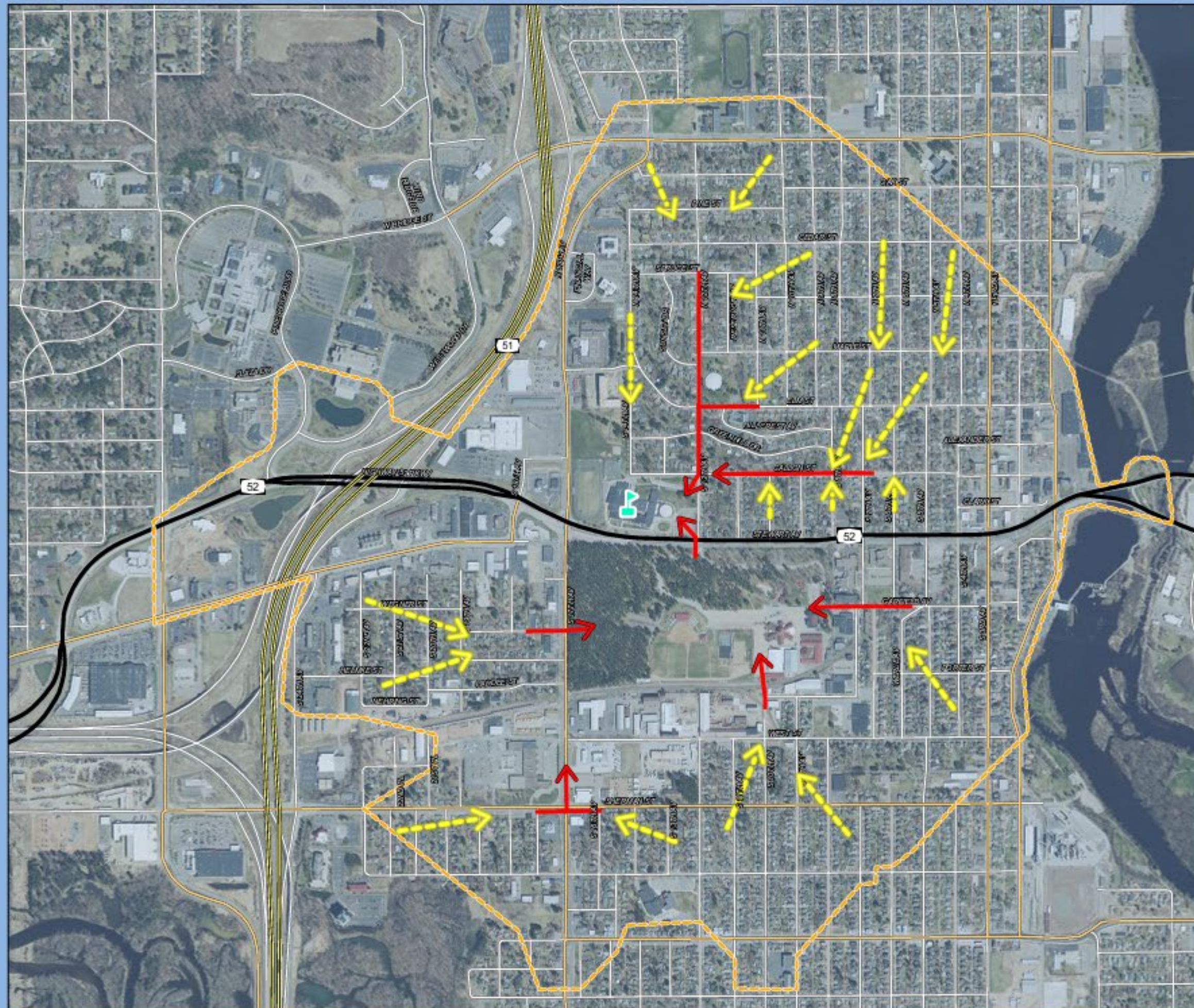
Prepared By:
**North Central
 Wisconsin Regional
 Planning Commission**

210 McClellan St., Suite 210, Wausau, WI 54403
 715-849-5510 - staff@ncwrpc.org - www.ncwrpc.org

Map 5A **DRAFT** School Routes

John Muir Middle School

Wausau Safe Routes To School



Legend

- John Muir Middle School
- Feeder Route
- Main Route
- 1-Mile Walk Distance
- U.S. Highway
- State Highway
- Main Roads
- Local Roads

0 500 1,000 2,000
Feet



Source: WI DNR, WisDOT, NCRPC, City of Wausau
This map is neither a legally recorded map nor a survey
and is not intended to be used as one. This drawing is
a compilation of records, information and data used for
reference purposes only. NCRPC is not responsible for
any inaccuracies herein contained.



Prepared By:
**North Central
Wisconsin Regional
Planning Commission**

210 McClellan St., Suite 210, Wausau, WI 54403
715-849-5510 - staff@ncwrpc.org - www.ncwrpc.org

P a v e m e n t M a r k i n g a n d S i g n a g e / S i g n a l i z a t i o n

Short-term

Responsible parties: City Eng. & Parks Dept.

Recommendation: At Stewart Ave & 17th Ave improve pedestrian crossings. See Panel 1.

Medium-term

Responsible party: City Eng.

Recommendation: Add 7-foot wide white line urban shoulders to 14th Ave and yellow centerline as shown on map.

New pavement/ engineering/ redesigning of infrastructure

Medium-term Responsible parties: City Eng, Apartment Owner.

Recommendation: Add sidewalks to 14th Ave as shown on map.



Pavement, Engineering, and Paint

John Muir
Middle School

17th Ave & Stewart Ave Improvements:

Medium-term Responsible parties: City Eng & Parks Dept.

Recommendations: Improve pedestrian safety through the following improvements.

1. Program traffic light to have concurrent pedestrian signal phasing (automatic walk signals), and split phasing when button is pushed (green turn arrow is postponed and converted to flashing yellow after protected pedestrian walk time ends).
2. East leg of this intersection does not allow enough time for a pedestrian to cross both westbound and eastbound lanes. Either extend the walk signal or split the signal and add 2 buttons on the median.
3. On all 4 right-turn slip lanes, change Yield to Stop, and mark crosswalks as high visibility.
4. Move various **Stop lines** per diagram below. Stop lines that are painted perpendicular to traffic increases crosswalk visibility when crosswalks are not perpendicular to traffic.
5. To stop walkers from cutting across 17th Ave at this location (), promote use of crosswalks (relocating sidewalks ) and Marathon Park pedestrian access through fence per diagram below.

and on next page.
Engineering:

Can some of the shorter-term recommendations above be applied sooner, even if some of the pavement/redesign cannot happen yet?

Example: pedestrian signal phasing changes, moving of stop lines, addition of stop signs, painting continental crossing and yield lines.

Discussion

Any questions?

Possible Action

Make a motion on possible action within this packet

Make a motion in next agenda item to prioritize some or all of the pavement markings recommended by the SRTS plan for John Muir Middle School area

From: [Julie Bollmann](#)
To: [Andrew Lynch](#); [Amanda Cottrell](#)
Cc: [Brad Lenz](#); [Allen Wesolowski](#)
Subject: [EXTERNAL] RE: Bike racks location
Date: Wednesday, July 17, 2024 3:39:09 PM
Attachments: [image002.png](#)
[image004.png](#)

Thank you, Andy, for all your help! Have a great weekend in Minneapolis!

Julie Bollmann

Executive Director

Phone: 715-907-7801

Mobile: 502-338-9896

www.childrensimaginarium.org



Children's Imaginarium

A MUSEUM FOR KIDS

From: Andrew Lynch <Andrew.Lynch@ci.wausau.wi.us>
Sent: Wednesday, July 17, 2024 3:10 PM
To: Julie Bollmann <jbollmann@childrensimaginarium.org>
Cc: Brad Lenz <Brad.Lenz@ci.wausau.wi.us>; Allen Wesolowski <Allen.Wesolowski@wausauwi.gov>
Subject: Bike racks location

Julie -

Thanks for meeting today. As we discussed, we will take a look at your request for the bike racks for the Imaginarium visitors internally and it may need to go to our Bike/Ped committee. Given the constraints of the landscaping around the front of your building, we discussed locating the racks on 2nd Street...roughly in the blue rectangle on the image. When 2nd St is rebuilt in a more permanent manner, that location may change. I'll keep you posted on our progress.

Thanks,
Andy Lynch



Andrew Lynch, AICP

Assistant City Planner
City of Wausau
andrew.lynch@ci.wausau.wi.us
p: 715.261.6686

From: [Glass & Grain House](#)
To: [Andrew Lynch](#)
Subject: [EXTERNAL] Bike Rack Request
Date: Wednesday, July 17, 2024 5:50:27 PM
Attachments: [1000012529-id-a7f95a2d-4db2-44ea-b887-9747d977a702.png](#)

Hello Andrew,

I am reaching out to see about having the city install a public bike rack near the corner of 6th St & Chicago Ave. We have a demand for safe & secure bike placement near our business, and the greater biking community of Wausau would love to see one here!

Thank you so much,



Erich Hoelter
Glass & Grain House LLC
Phone : [715-348-6972](tel:715-348-6972)
1702 N 6th St Suite B | Wausau, WI 54403

BikeRack_GG2

