

*** All present are expected to conduct themselves in accordance with our City's Core Values ***



OFFICIAL NOTICE AND AGENDA

of a meeting of a City Board, Commission, Department Committee, Agency, Corporation, Quasi-Municipal Corporation or Sub-unit thereof.

Notice is hereby given that the Park and Recreation Committee of the City of Wausau, Wisconsin will hold a regular or special meeting on the date, time and location shown below.

Meeting of the: **PARKS AND RECREATION COMMITTEE OF THE CITY OF WAUSAU**
 Date/Time: **Monday, October 7, 2024 at 5:15pm**
 Location: **City Hall (407 Grant St, Wausau WI 54403) - COUNCIL CHAMBERS**
 Members: **Lou Larson, Carol Lukens, Tom Neal, Lisa Rasmussen, Sarah Watson**

AGENDA ITEMS FOR CONSIDERATION

- 1 Approval of Minutes of the September 3, 2024 Meeting
- 2 Discussion and Possible Action Granting Permission to 3M for Soil Testing
- 3 Discussion and Possible Action Approving a Park Improvement Request for a Communication Board at Oak Island Park
- 4 Discussion and Possible Action Approving a Request to Relocate the Boy with Boot Statue
- 5 Discussion and Possible Action Approving Repairs to 10th Street Park Wall and Funding Recommendation
- 6 Emerald Ash Borer Management Plan Update
- 7 Educational Items
 - A. Park Updates (EAB DNR Grant, SaveStations, Athletic Park Turf, Drinking Fountain, Winterization, Park Kiosks, Vandalism/Garbage, Events)
- 8 Future Agenda Items - Park Ordinance Updates
- 9 Next Meeting: Monday, November 4, 2024 at 5:15pm, Maple Room (City Hall 407 Grant St, Wausau, WI 54403)
- 10 Adjournment

Lou Larson, Chair

Members of the public who do not wish to appear in person may view the meeting live over the internet on the City of Wausau's YouTube Channel <http://www.tinyurl.com/WausauCityCouncil>, live by cable TV, Channel 981, and a video is available in its entirety and can be accessed at <https://tinyurl.com/WausauCityCouncil>. Any person wishing to offer public comment who does not appear in person to do so, may e-mail Jamie.polley@co.marathon.wi.us with "Parks Committee public comment" in the subject line prior to the meeting start. All public comment, either by email or in person, if agendaized, will be limited to items on the agenda at this time. The messages related to agenda items received prior to the start of the meeting will be provided to the Chair.

In accordance with the requirements of Title II of the Americans with Disabilities Act of 1990 (ADA), the City of Wausau will not discriminate against qualified individuals with disabilities on the basis of disability in its services, programs or activities. If you need assistance or reasonable accommodations in participating in this meeting or event due to a disability as defined under the ADA, please call the ADA Coordinator at (715) 261-6622 or ADAServices@ci.wausau.wi.us to discuss your accessibility needs. We ask your request be provided a minimum of 72 hours before the scheduled event or meeting. If a request is made less than 72 hours before the event the City of Wausau will make a good faith effort to accommodate your request.

This Notice was posted at City Hall and transmitted to the Daily Herald newsroom on 10/02/24 @ 4:00 p.m. Questions regarding this agenda may be directed to Winnie Parker, Park Office (715) 261-1550.

Distribution List: City Website, Media, WSD-Admin, Alderpersons, Mayor, Polley, Dept. Staff, Maryanne Groat, Brad Lenz, Eric Lindman, Lance Leonhard, Wisconsin Woodchucks, Wausau Events, Public Access, Wausau River District

2. Discussion and Possible Action Granting Permission to 3M for Soil Testing

3M is requesting permission from the City to conduct testing in Riverside Park as part of their acquisition of the railroad property adjacent to Riverside Park. They recently acquired the rail line and discovered there are elevated levels of arsenic in the soil, likely from historical rail operations. At the request of WDNR, 3M has prepared a work plan for environmental investigation at a portion of Riverside Park. The WDNR has 60 days to review the work plan. The work is best conducted without snow cover so the work could occur in 2024 if approvals are received quickly or the work may be deferred to spring of 2025. The work plan includes a map of soil sampling locations (attached), the soil will be sampled for arsenic only. The results will be shared with the City of Wausau and WDNR.

The duration of work will be 5-7 business days. 3M does not anticipate having to clear or remove trees or vegetation however if that changes, 3M will notify the City of Wausau. 3M will fill all boreholes with bentonite and then top with topsoil and grass seed. If there is any surface damage to the grass due to the drilling equipment, then the area will be topped with top soil and grass seed.

If the WDNR determines that further investigation or soil remediation is needed, 3M will be responsible for completing those activities and will coordinate access with the City of Wausau. Communication with the DNR confirming the process is attached. Mr. Kevin Madson PE, Senior Environmental Engineer for 3M will be available for questions via Webex during the meeting.

The Committee is asked to recommend approval of 3M's request for permission from the City to perform soil testing within Riverside Park.

3. Discussion and Possible Action Approving a Park Improvement Request for a Communication Board at Oak Island Park

The Department received a request from the MOM's Club of Wausau to place a communication board at Oak Island Park near the playground. The communication board assist children with limited verbal communication, such as autistic children or children with multiple disabilities to communicate with their caregivers or other children. The group has received funding from the Channing's Joy Foundation for the board and is requesting the city's assistance to install the board and maintain it once installed.

The department does support this addition to the playground. If approved the department will develop an agreement with the group similar to the agreements in place for other statues or additions to the parks.



<https://playgroundcommunicationboards.com/>

The Committee is asked to approve the donation of a communication board to Oak Island Park playground and direct staff to develop an agreement for the placement of the board.

4. Discussion and Possible Action Approving a Request to Relocate the Boy with Boot Statue

The City owns a statue called the Boy with the Boot. This statue originally was in Hammond Park from the early 1920's to 1980. After it was vandalized several times it was removed. The statue was later refurbished by the Kiwanis and became a fixture in the Wausau Mall. Since the mall has been removed the statue remains safe with the Parks Department. The department recently received a request from Becher Hoppe, representing the mall site redevelopment team, requesting that the City approve the placement of the Boy with the Boot Statue within the new development. A proposed location for the statue is below. The group indicated that their initial plan is to remove the statue each winter and replace it with a seasonal decoration.



The Committee is asked to approve the placement of the Boy with the Boot statue within the mall redevelopment area and direct staff to develop an agreement for the use of the statue.

5. Discussion and Possible Action Approving Repairs to 10th Street Park Wall and Funding Recommendation

It has come to our attention that the wall along the east side of 10th Street Park is failing. The wall currently has a bow in it, likely due to water coming across the sidewalk that is sloped toward the backside of the wall. As a result of this past winter a large pocket of the wall failed in its full depth. That area has been restored however there are several other areas of the wall that are in need of work, mostly tuck pointing. In reviewing the wall with City Engineering we believe that tuckpointing will only be a Band-Aid approach as the likely cause is water behind the wall. Our department and Engineering are in agreement that backfilling the wall would be the best long-term solution to maintain the integrity of the sidewalk/road and reduce maintenance costs. The other option would be to completely rebuild the wall which would be more difficult and most likely more costly. We are not aware of any historical significance to this wall as it is purely utilitarian in its function.

Engineering has assisted our department in developing a preliminary plan and estimate for the 10th Street wall. This plan assumes the majority of the wall stays and we fill behind it. The top approximately 1-2 foot of the wall and the fence would be removed. The estimate also assumes all the walk to be replaced. With the tipping and damage to the walk it may be tough to do spot replacements. Funding for this project is not included in the 2024 budget. Funding could be identified or this project could be included in the 2025 budget. If approved, and we are able to identify funding, Engineering will assist with writing the bid package.

The Committee is asked to approve the recommendation to backfill the wall to the height of the existing sidewalk stabilizing the wall that supports the sidewalk and 10th street and replacing the sidewalk. The Committee is also asked to recommend to the Finance Committee that funding for this project be included in the 2025 budget.



6. Emerald Ash Borer Management Plan Update

John Kahon, City Forester, will be providing the committee with an overview of the adopted Emerald Ash Borer plan. He will also describe the work completed to date and the work scheduled for the future. Included in the packet is a presentation from 2016 with background information on EAB and information on where the city was then. Also included in the packet is the City's EAB plan updated in 2021.

7A. Project Update

EAB DNR Grant The City received a \$498,482.08 Wisconsin DNR Urban Forestry Inflation Reduction Act grant for **City of Wausau Tree Planting & Private Ash Mitigation Project**. This grant is for a three year period that will assist disadvantaged areas of the city remove infected ash trees on private property. A portion of the program will also fund planting trees on school district property with an education component and the replacement of 900 trees where the public urban forest canopy has been lost due to the removal of ash trees.

[Press Release: Gov. Evers, DNR Announce Inflation Reduction Act Urban Forestry Grant Recipients \(govdelivery.com\)](#)

SaveStations Our department along with the Wausau Fire Department received a grant for three SaveStations. These are public AED stations that will be made available to the public in case of a cardiac emergency. The stations are heated and cooled and monitored. The SaveStations have been installed at the 400 Block and in Riverlife Park. A ribbon cutting was held on September 18 and a press release was issued. The other station will be installed at Athletic Park.

Athletic Park Turf Progress on the installation of the turf is going well. The contractor is currently installing the carpet and should be done this week. We will then have to sod areas, finish fencing, netting and some minor odds and ends.

Drinking Fountains New fountain pads have been poured at RiverLife Wharf, Oak shelter/playground and Oak Rose Bowl

Winterization Staff is conducting water shutdowns of various locations for winter. At Woodson Park the fountain pump has been removed for repair

Park Kiosks New kiosk pads poured at Gilbert Park, Oak Island Park, Memorial Park, and Scholfield Park. These kiosks were built in partnership with the Wausau West High School woods class.



Vandalism/Garbage This summer two full time people have had to clean up vandalism and garbage on a daily basis at many city parks and Marathon Park, specifically Hammond park and the shelter no. 4 by the campground playground. The damage and garbage are coming on a daily basis from those that try to sleep in the parks. we cleaned up feces 3 times in the last two weeks. Having to attend to this on a daily basis is affecting the work that could be getting completed by these two full time staff.

- In addition we received a call from a resident that there was an individual staying in Airport park. The encampment was removed due to the tournament that was taking place in Airport park on that weekend.
- We had a vandalism event at Riverlife. PGA did work on our side of the fence and destroyed a landscaped area north of first street adjacent to ABC supply. We are still waiting on word on what they will do to correct the damage.

Events

Marathon Park: Art in the Park & Art World Sept 5 – 8

400 Block: Wausau Festival of Arts Sept 6 - 8

Oak Island: Beer and Bacon Festival: Sept 13 - 16

Sports Complex: Fall Cup for MC United Sept 13 – 15 - 90+ teams

Nine Mile: Ragnar Sept 16 – 23 – 1649 runners!

CITY OF WAUSAU – PARKS AND RECREATION COMMITTEE MEETING MINUTES

Date/Time: September 3, 2024, at 4:16 p.m. Location: Council Chambers, City Hall
Parks and Recreation Committee Members Present: Lou Larson (c), Carol Lukens, Tom Neal, Lisa Rasmussen,
Excused: Sarah Watson
Others Present: Jamie Polley-Parks Director, Doug Diny-Mayor, Anne Jacobson, City Attorney

In accordance with Chapter 19, Wisc. Statutes, notice of this meeting was posted and sent to the Daily Herald in the proper manner. A quorum was present, and the meeting was called to order at 5:15pm.

1. Approve Minutes – August 5, 2024 – **Motion** by Rasmussen, second by Neal to approve the Park and Recreation Committee draft May 6, 2024, minutes. Motion **carried** by voice vote; vote reflected as 4-0.

2. Discussion and Possible Action Accepting a Donation of Land Located at 508 E Wausau Ave – 508 E Wausau Ave is adjacent to the Athletic Park neighborhood park. The house in this lot recently burned down and the property owner, Ya Yang, would like to donate the property to the City. The house has been removed and only a garage remains. Staff believes this lot could be additional accessible parking for the Woodchucks/Athletic Park and move our ADA parking to this parcel. In exchange for the donation Mr. Yang is only asking for recognition of the donation when the lot is developed and that the lot continue as public use. Mr. Yang served on both the City Council and County Board in the past. Staff would like the Committee to recommend acceptance of this donation of land to then be brought forward to the full City Council. Questions were answered. **Motion** by Rasmussen, second by Lukens to accept Ya Yang donation of 508 E Wausau Avenue property. Motion **carried** by voice vote; vote reflected as 4-0.

3. Discussion and Possible Action Approving the 2025-2026 Parks and Recreation Facility and Program Fee Schedule – The proposed 2025-2026 Facility and Program Fee schedule was reviewed. Staff is recommending adjustments to the fee schedule that include a 3% increase to most fees including the shelter fees (2025 & 2026); no new fees have been added at this time. The 3% increase was a directive given from County Administration for county facilities. For the past several years it has been our practice to make the same increase the county makes to the city. The fees that need approval are highlighted in yellow. Approval of the fees is recommended to set the shelter rates for the following year. This permits our department to allow users to reserve shelters 12 months in advance. The increases proposed are to keep in line with Capital Improvement Project increases and the increased departmental staffing and equipment costs. Questions were answered and discussion followed. **Motion** by Neal, second by Rasmussen to direct staff to approve the 2025-2026 Parks and Recreation Facility and Program Fee Schedule as written. Motion **carried** by voice vote; vote reflected as 4-0.

4. Discussion on Parks and Recreation Committee Structure – The committee discussed the possibility of amending the Parks and Recreation Committee Structure and how that would affect finance, authority, governance, ordinances, and codes. Director Polley proposed creating a County Parks and Rec Committee much like the City Parks and Rec Committee to oversee their respective areas. Then the Parks Commission would continue to meet quarterly to oversee areas that affect both city and county on things like fee schedule and to monitor and update policies and ordinances. The Parks Commission is made up of three (3) City Council members and three (3) County Board members and one (1) member at-large that both city and county agree upon that does not reside in the City. The City of Wausau Parks and Rec Committee is a standing committee that, per ordinance, must advance certain items to council; examples of such items include procurement, contracts, resolutions, and budget requests. Further Discussion followed. **Consensus** of members is to keep the City of Wausau Parks and Rec Committee structure as it stands and to direct Jamie Polley, Director, to conduct research into the creation of a County Parks and Rec Committee.

5. Discussion and Possible Action Setting the October Meeting Date Due to Staff Conflict and November Meeting Date Due to Election – The Committee decided to keep the October 7, 2024, meeting date and requested Jamie send an alternate. The November 4 meeting date will remain unchanged but will be moved to the Maple Room and will be recorded by audio rather than video.

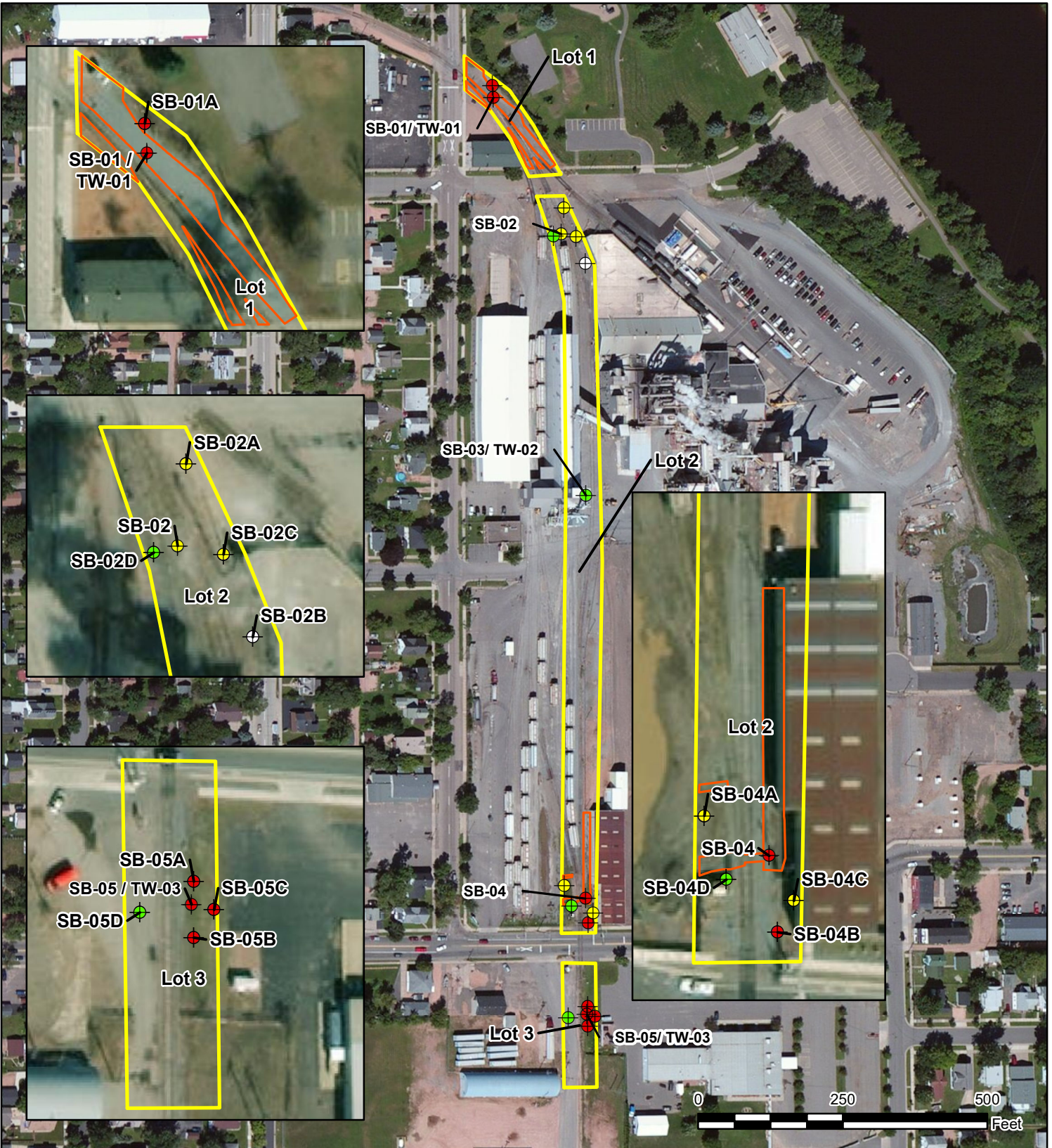
6. Educational Items

A. Park Updates – SaveStation. A grant was received to install AED SaveStations that are operational year-round. They are heated, cooled, video monitored, and alarmed. The first AED SaveStation will be installed on the 400 Block and will be covered for a much-anticipated joint press release in combination with the mayor's office, the Fire Department, and the Parks, Rec, and Forestry Department. The Fire Department would like to include education

with this unveiling in conjunction with their heart safe initiative to be a heart-healthy community. The second AED SaveStation will go in at River Life to the south of the concession stand, and the third station will go in at Athletic Park. Two more stations are coming next year; one will go in the Sports Complex, and we have yet to determine where the fifth one will go. This initiative will educate the public and increase the chances of survival of cardiac arrest by greatly decreasing response times. Events – Summer events are winding down as we had our last Concert on the Square at the 400 Block and The Blues Fest. The Canoe and Kayak Corporation had two very successful back-to-back weekends of kayak championship competitions, during which some individuals qualified for the World Competition held in Germany. The corporation is hoping to hold the World Competition here in 2029, but to be considered they need to host two more major events here in Wausau. We had the Wausau Marathon along with Art World and Art-in-the-Park, all in Marathon Park; the Beer and Bacon Festival is September 13-15; and Ragnar is the following weekend at Nine Mile.

7. Future Agenda Items - Park Ordinance Updates, 10th Street Park Wall, Proposal for the Madam Karkar Memorial at Stewart Park, Update on EAB Plan

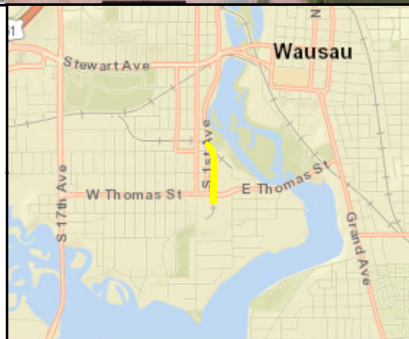
8. Adjournment – **Motion** by Neal, second by Lukens to adjourn at 6:53 p.m. Motion **carried** by voice vote, vote reflected as 4-0.



Legend

- ⊕ Unsampled
- <3 mg/kg
- 3 - 3.8 mg/kg
- >3.8 mg/kg

- ▭ Completed Excavation Extent
- ▭ Lot Boundary



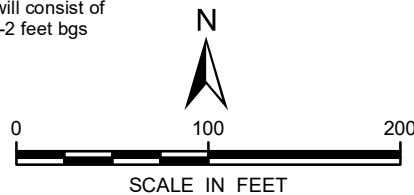
<p>3M COMPANY RAIL LOTS WAUSAU, MARATHON COUNTY, WI</p>	
<p>SOIL BORING LOCATION MAP</p>	
	<p>FIGURE 3</p>



LEGEND:

- Parcel Lines
- DU
- SU1 (0.115 acres)
- SU2 (0.09 acres)

- Notes:
1. DU = decision unit
 2. SU = sampling unit
 3. Each sampling unit shown will consist of two sampling unit depths (0-2 feet bgs and 2-4 feet bgs)

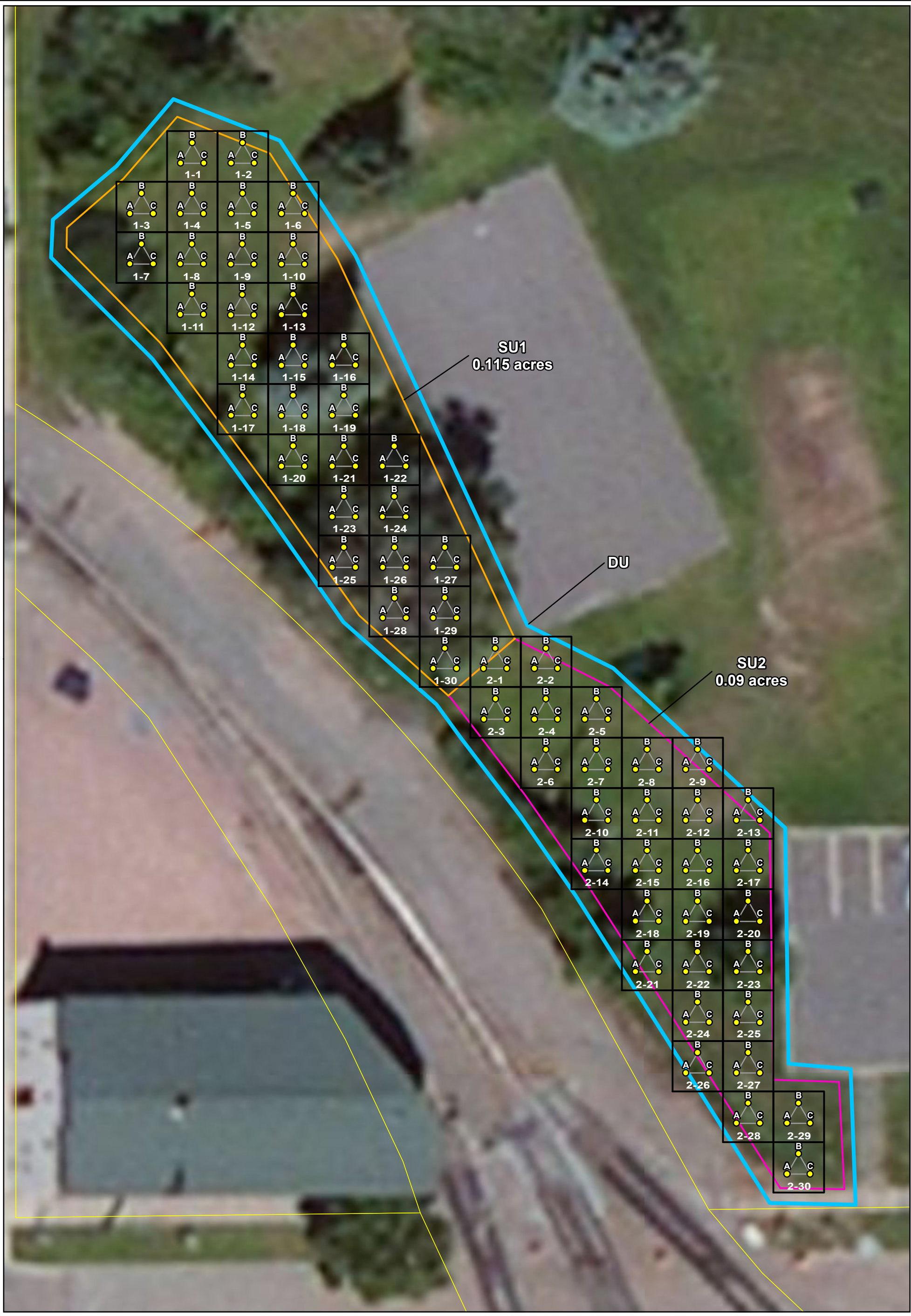


3M COMPANY
RAIL LOTS
WAUSAU, MARATHON COUNTY, WI

**INCREMENTAL SOIL
SAMPLING PLAN**



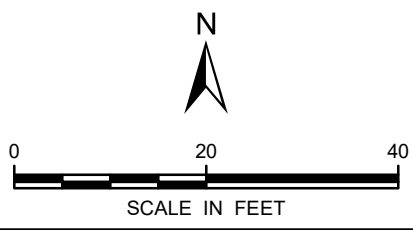
FIGURE
4



LEGEND:

- Soil Sample Location
- ▭ Parcel Lines
- ▭ DU
- ▭ SU1 (0.115 acres)
- ▭ SU2 (0.09 acres)
- ▭ Grid - 11.3 ft x 11.3 ft

Notes:
 1. DU = decision unit
 2. SU = sampling unit
 3. Each sampling unit shown will consist of two sampling unit depths (0-2 feet bgs and 2-4 feet bgs)



3M COMPANY
 WAUSAU, MARATHON COUNTY, WI

PROPOSED TRIPPLICATE SOIL INCREMENT LOCATIONS



Jamie Polley

From: Gray, Jane K - DNR <jane.gray@wisconsin.gov>
Sent: Monday, September 30, 2024 11:47 AM
To: Jamie Polley
Cc: Thompson, Matthew A - DNR
Subject: [EXTERNAL] RE: Discuss Riverside Park

You don't often get email from jane.gray@wisconsin.gov. [Learn why this is important](#)

Hi Jamie – Thank you for your questions regarding the upcoming work that is planned by 3M for their CN/WCL RR Track Former site (BRRTS #02-37-587000). The source of contamination at Lot 1 of this site, which is adjacent to the Riverside Park, is understood to be related to the railroad activities. In correspondence dated 06/02/21, the DNR asked 3M to further investigate the arsenic soil contamination identified at sample locations SB-01 and SB-02, which are located on Lot 1. Please note that Wis. Admin. Code ch. NR 716 requires that a responsible party, which is 3M for this site, not only delineate the extent and degree of contamination, but also to extend the site investigation beyond the site's property boundaries, as long as access is provided. The City of Wausau may choose grant access to 3M to perform their planned off-site environmental investigation. Regarding responsibility at this site, Wis. Stat. 292.11 defines a responsible party as a person who possesses, controls, or causes a discharge of a hazardous substance(s). For this site, the DNR has identified 3M as the responsible party for this site, and therefore they are responsible for the site investigation and any remedial actions that may be warranted.

As I mentioned in my voicemail just now, please do not hesitate to reach out if you have any further questions on this topic.

Thank you, Jane

We are committed to service excellence.

Visit our survey at <http://dnr.wi.gov/customersurvey> to evaluate how I did.

Jane Gray
she/her/hers
Phone: (414) 435-8021
jane.pfeiffer@wisconsin.gov

From: Jamie Polley <Jamie.Polley@marathoncounty.gov>
Sent: Wednesday, September 25, 2024 2:22 PM
To: Thompson, Matthew A - DNR <MatthewA.Thompson@wisconsin.gov>; Gray, Jane K - DNR <jane.gray@wisconsin.gov>
Subject: FW: Discuss Riverside Park

**CAUTION: This email originated from outside the organization.
Do not click links or open attachments unless you recognize the sender and know the content is safe.**

Hello Jane and Matt,

As Kevin Madson from 3M mentioned, we have been working together on a request that 3M has to enter Riverside Park for additional testing of arsenic from the rail line they are purchasing. I plan to take this request to the Parks

Request for Additional Services

Purpose: The Wausau & Marathon County Parks, Recreation, and Forestry Department has a desire to always provide high quality recreational services and facilities. With restricted financial and personnel resources the Department needs a process to evaluate requests for additional services. Additional services being defined as additions to programs and facilities or new programs and facilities.

In order to fully evaluate and stimulate thought on the complete aspects of additional services, please provide the Department with a request that includes the following (all items may not pertain and may not be known by requestor):

- Please describe program or facility where additional services are being requested.
 - Adding communication boards to Oak Island and Doepke Park
- Please describe additional services/facility being requested.
 - Adding communication boards
- Why do you think this additional service/facility is needed?
 - Children with limited verbal communication, such as Autistic children or children with multiple disabilities, can communicate with their caregivers and other children through the use of these boards.
 - A communication board is a visual aid designed to support and enhance communication for individuals who have difficulty with verbal expression or understanding spoken language. Communication boards display a combination of words, symbols, pictures, and sometimes letters or numbers, allowing users to convey their thoughts, feelings, needs, and wants by pointing to or touching the images on the board. They can be used by people with a range of communication challenges, including those with autism, developmental disabilities, aphasia, or other speech and language impairments.
 - Communication boards come in various formats, from low-tech printed paper or laminated sheets to high-tech electronic devices with touch screens and voice output. They can be customized to suit the individual's unique communication needs and preferences, incorporating personally relevant vocabulary and images.
 -
- What exactly is being asked of the Department (funding, maintenance, construction)?
 - Installation and maintenance
- What are the total costs for the additional services/facilities (not only initial costs but future costs)?
 - Low cost to maintain, just regular cleanings. They are made for the outdoors
- How would it be funded (what is the County/City being asked to contribute, what is the group willing to contribute, grants, donations, etc.)?
 - Channing's Joy Foundation will be funding these boards. They will work with Smarty Symbols to get them ordered
- Who will provide maintenance in the future (will it be turned over to the Department upon completion, will there be maintenance funds put aside, group to provide some maintenance, who repairs damage, etc.)?

- Cleaning and maintenance will be turned over to the department, however if damage did occur Channing's Joy should cover additional funds needed.
- **What are the expectations of the County/City once it is complete?**
 - Regular cleaning and making sure it stays in good condition/checking for damage.
- **What is the timeline for completion?**
 - no timeline

For facility improvements or additions: provide a site plan, pictures of the proposed changes and a materials list.

Pkdata/PKforms/p667RequestforAdditional Services



Wausau & Marathon County
**Parks, Recreation
& Forestry**

The Boy, the boot, and the mystery

By JILL FREDEL
Herald Intern

This is the story of a boy. He's older as boys go, and no one knows for sure where he came from or to whom he belongs.

Thousands of people used to see him every year, but not one of them claimed him. For all practical purposes, he is an orphan. But before you run to your phone to call a local adoption agency, let me explain the story of the statue, "The Boy with the Leaking Boot."

Wausau's Boy (as he is affectionately known by the statue's historians) stood in Hammond Park until about 18 months ago when it was damaged by vandals. The statue was removed and stored in the Park Department's repair shop.

The Boy's place in Hammond Park was taken by "Willie's Dilemma" — a donation this past spring from the Kiwanis Club of Wausau.

The Boy, tentatively, is to be placed in the entrance to the downtown shopping mall, according to mall developers.

Those are the most recent developments involving the Boy, but the past is even more interesting.

Wausau's Boy is actually one of more than 25 such statues in the world. (The nearest other Boy is in front of the fire station in Stevens Point.)

Other statues in the area include four in Menominee, Mich. (one outside the M & M Brewing Company, one inside the library and two in private ownership), one in Door County in private ownership and one in Neenah, also in private ownership.

The story of Wausau's Boy began in the early 1920s when Sue Hammond Rhea, who founded Hammond Park in honor of her father, brought the Boy to be placed in the Thomas Street side of the park.

The exact date of the statue's placement in the park is unknown, but Maryanne Norton of the Marathon County Historical Museum believes it was put there in 1923 or 1924.

The first reference to the statue she found came in the city park board's minutes in 1925.

"But we don't know if it had been in the area before that time," said Norton.

The statue was vandalized twice in the 1940s and put in storage for quite a while. It was re-installed at a later date with the boot hanging upside down, instead of the original right side up.

The statue was later knocked off its base and put in the Park Department's garage attic where it was forgotten for some time.

When the statue was found again, the boot was turned around, and the statue was put back in Hammond Park.

In the spring of 1980, the statue was again knocked off its base. Park Department officials decided against re-installing the Boy. Instead, plans have made to include it in the downtown mall.

The statue now stands in the Park Department's garage on Pardee Street.

That's the history of Wausau's Boy. The mystery of the Boy's origin, though, is not confined solely to Wausau. No one has been able to find out anything about any of the Boys worldwide.

The Rev. Alexander Fleck of Fort Worth, Texas, has tracked down many of the statues, but even he has come up empty on where the statue originated.

Emma Towsley, who is the resident expert on the Boy in Wallingford, Vt., said a sculptor who visited the small town said he thought the statue was made in Italy because the curves reminded him of Italian sculpture.

Towsley discounted another theory that the statue originated in Germany, although seven were shipped to the U.S. from that country more than 100 years ago, and the statues are made of a white pewter

metal native to Germany.

"I have received letters from Germany," she said "saying it is not of German origin."

Wallingford's Boy was placed on the side of the town's Main Street in 1898 to honor one of the town's civil war veterans. The trough surrounding the statue was used to water horses.

The inscription on the trough reads, "Erected to the memory of Arnold Hill, by his children, April 3rd, 1898."

In 1927 the statue and trough were moved to their present location on the lawn of what is now the English Learning Center.

Towsley, who lives in a 200-year-old house on Main Street, said the statue was moved to "make room for the Model Ts."

The Wallingford Boy, unlike Wausau's, is painted. The Boy's blouse is red, his trousers and cap are blue and the leaking boot is brown.

But like Wausau's Boy, Wallingford's Boy has also been vandalized. The most recent and damaging incident occurred on Halloween night in 1974 when the statue was hit by a car and knocked from its base.

Several pieces of the statue were broken off in the incident.

Since that time, Towsley said, the townspeople have taken it upon themselves to look out for the statue's well-being.

The Wallingford Boy is further protected by being put in storage each winter.

Another mystery concerns whom the statue was patterned after.

The more accepted version involves a drummer boy in the Civil War, who was looking after a wounded comrade on the battlefield.

When the soldiers cried for water, the lad, lacking a utensil, filled his boot from a nearby stream. Holding his thumb in the torn part of his boot to keep the water from leaking out, he was able to quench the soldiers' thirst.

The story, however, has never been substantiated.

Part of the interest in the Boy remains because of the mystery associated with the statue. The questions will probably never be answered. But, when you think about it, wouldn't it take something away from the aura surrounding the Boy if they were?



Wausau's Boy (right) with upside-down boot, and Wallingford's Boy (above) with right-side-up boot.

Statue finds new home

Orphaned 'Boy' will greet shoppers

By **BRIAN LEAF**
Herald Staff

He may be destined to become Wausau's most famous orphan, if he isn't already.

For three years, he's been waiting for the great unveiling, gathering dust in a back room of the Marathon County Park Department.

Finally, "The Boy with the Leaking Boot" is out of the closet. He's into the mall.

The Boy is among an elite group of statues. He is one of only 25 known Boys around the globe.

His brothers stand in Italy, England, Sweden, and in Toronto and Winnipeg, Canada.

In the United States, they stand in places like Wallingford, Vt.; Fresno, Calif.; Hershey, Penn.; El Dorado, Kan.; and Stevens Point, to name a few.

See picture on Page 20.

But no one can lay exclusive claim to the Boy as his city's native son.

No one is sure where the Boy is from.

Wausau's Boy came home in 1923 or 1924, said Maryanne Norton, librarian for the Marathon County Historical Society.

The first reference she found about the statue came from minutes of a city park board meeting in 1925.

His home turf in Wausau for many years was Hammond Park, at the corner of Grand Avenue and Thomas Street. He stood in the park, holding his boot sole down, leaking at the toe.

But like most boys, this Boy has taken a few good lickings from bullies over the years.

In the 1940s, the Boy was vandalized twice. That prompted a repair job. When finished, the Boy was holding the boot upside down.

In 1980, the Boy was knocked off its base in the park by vandals. Park Department officials decided not to put the Boy back in the park. Instead, a statue-fountain called "Willie's Dilemma" was put in his place.

The Kiwanis Club wanted to repair the Boy and put him back in the park to let the vandals know that the public wasn't going to be intimidated by destructive acts.

But the idea was scrapped when officials learned the Boy was one of only 25 such statues in the world.

After the damage in 1980, the Boy was restored to his original pose, holding the boot by the top with water leaking from the toe.

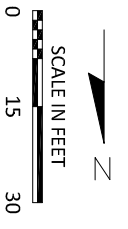
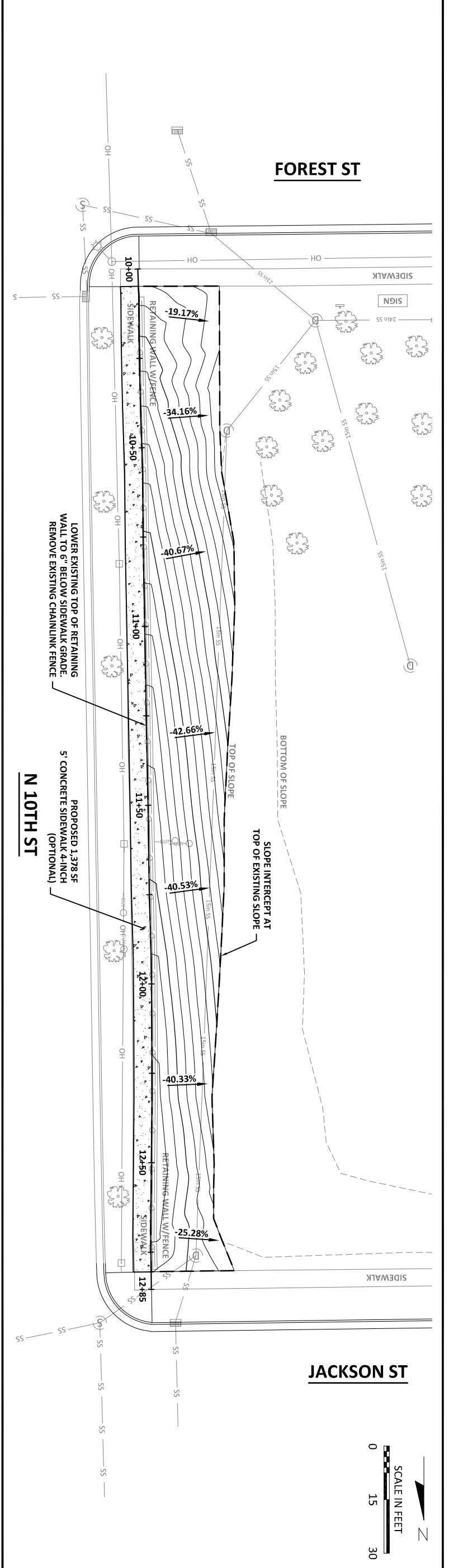
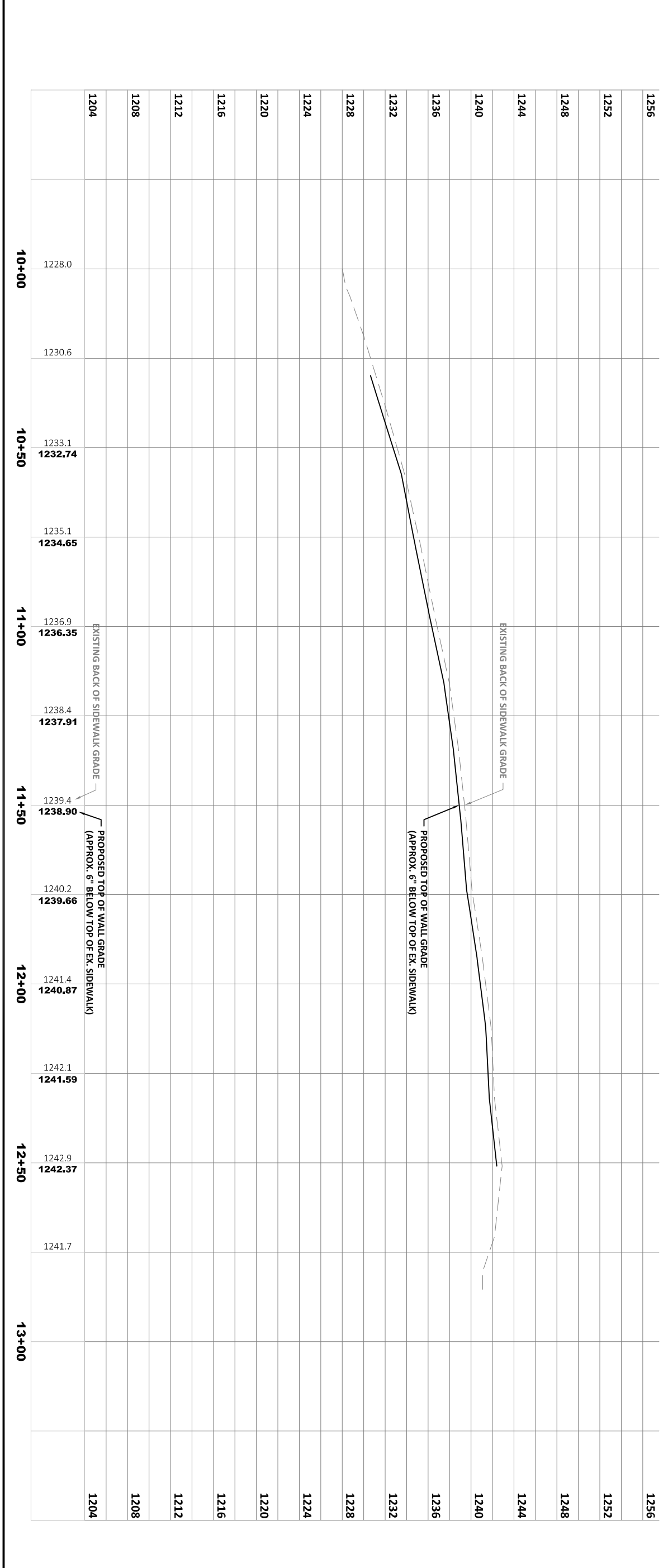
Several groups worked to move the Boy to the mall. They included the Wausau Area Chamber of Commerce, the beautification committee, the Marathon County Historical Society, the park department, and the Kiwanis Club, which donated \$1,500 to the project. A local foundation, which wished to remain anonymous, also donated money.

Next to the Boy is a plaque that reads: "The Boy with the Leaking Boot, donated to the people of Wausau by Sue Hammond Rea in 1925, placed in the Wausau Center by the Kiwanis Club of Wausau and the Wausau (Marathon County) Park Department, Aug. 3, 1983."

So now the Boy has become a fixture in a place where he will be protected from the bullies of his past.

Maybe there are more famous orphans in the city. But at the very least, the Boy will be Wausau's most visible orphan, greeting shoppers as they pass an irregular-shaped pool hedged with shrubs near the entrance to Prange's in the Wausau Center.





TENTH STREET PARK
 FOREST ST TO JACKSON ST
 GRADING PLAN
 TENTH STREET PARK GRADING

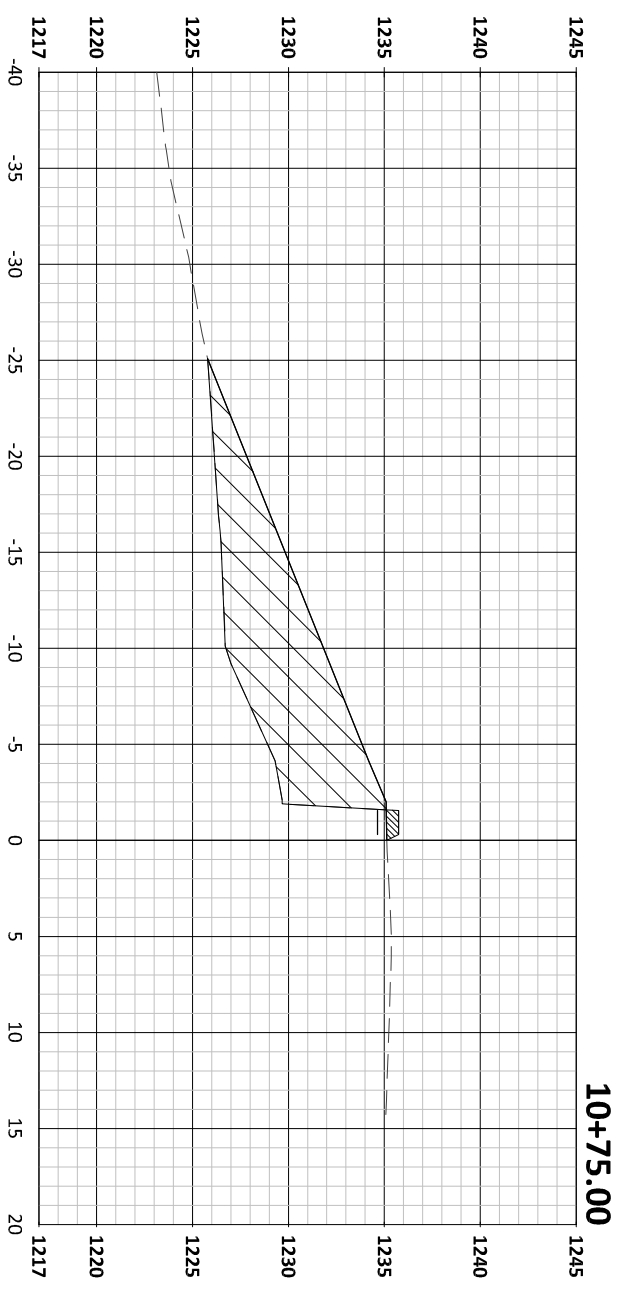
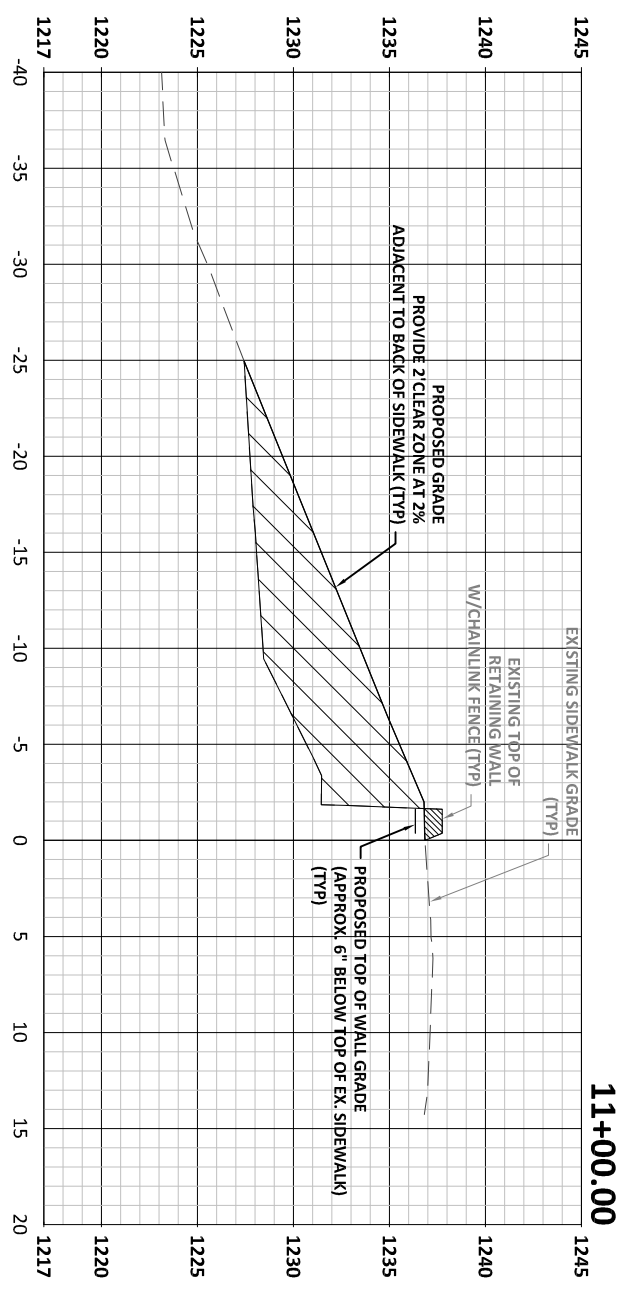
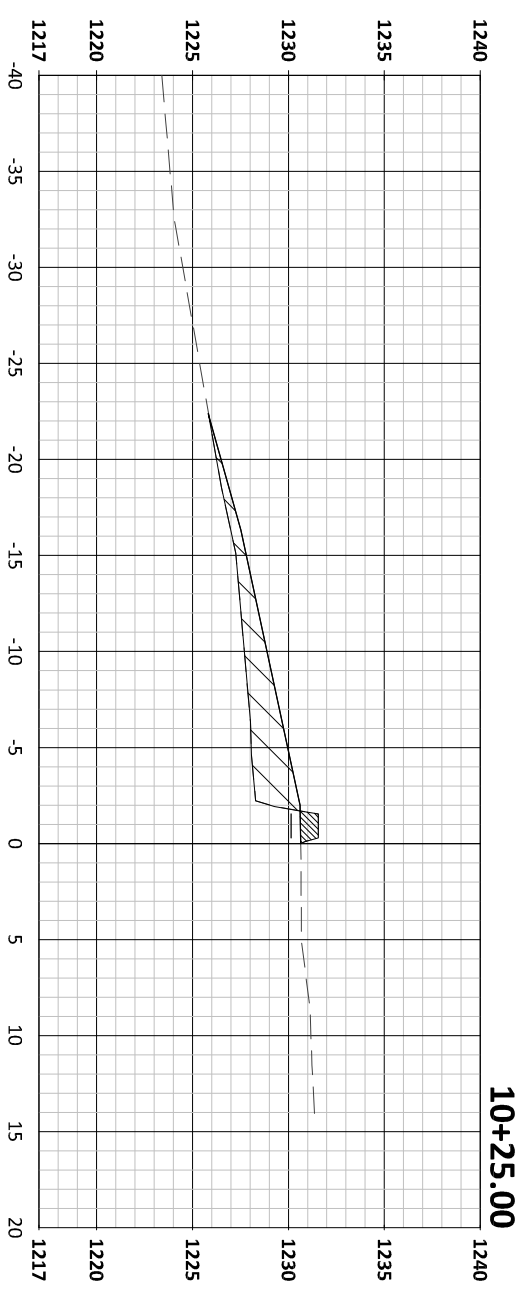
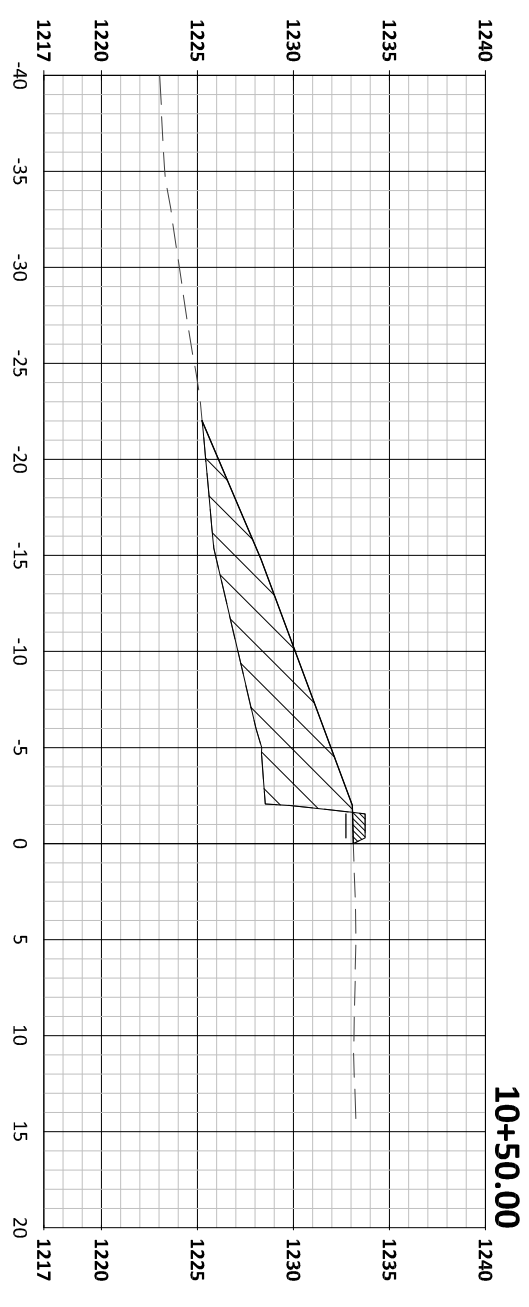
ISSUED FOR	DATE	REVISIONS
PRELIMINARY REVIEW/APPROVAL BIDDING/CONST. REC. REF. DWG. OFFICE USE	07/15/2024	J.D.VANBOXEL

SURVEYED BY: J.D.VANBOXEL
 FIELD BOOK NO. PG.
 PROJ. ENGINEER: T.J.NIKSICH
 DRAWN BY: J.D.VANBOXEL
 APPROVED BY: A.M.WESOLOWSKI
 POINT FILE:



CITY OF WAUSAU
 Engineering Department
 407 GRANT STREET WAUSAU, WI. 54403-4783
 (715) 261-6740 FAX (715) 261-6759

Total Volume Table					
Station	Fill Area	Cut Area	Fill Volume	Cut Volume	Cumulative Cut Vol
10+25.00	1.36	20.73	0.00	0.00	0.00
10+50.00	0.93	50.97	1.06	33.19	33.19
10+75.00	0.90	79.63	0.85	61.02	94.21
11+00.00	1.34	79.23	1.04	73.55	167.76
11+25.00	1.57	72.07	1.35	70.05	237.80
11+50.00	1.77	62.12	1.55	62.13	299.93
11+75.00	1.91	58.11	1.70	55.66	355.59
12+00.00	1.34	53.95	1.51	52.20	407.79
12+25.00	1.37	47.86	1.26	47.14	454.93
12+50.00	0.95	38.28	1.07	39.88	494.81
12+75.00	2.95	10.02	1.80	22.24	517.04



CITY OF WAUSAU
 Engineering Department
 407 GRANT STREET WAUSAU, WI. 54403-4783
 (715) 261-6740 FAX (715) 261-6759



ISSUED FOR: PRELIMINARY REVIEW/APPROVAL BIDDING/CONST. REC. REF. DWG. OFFICE USE

DATE: 07/15/2024

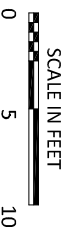
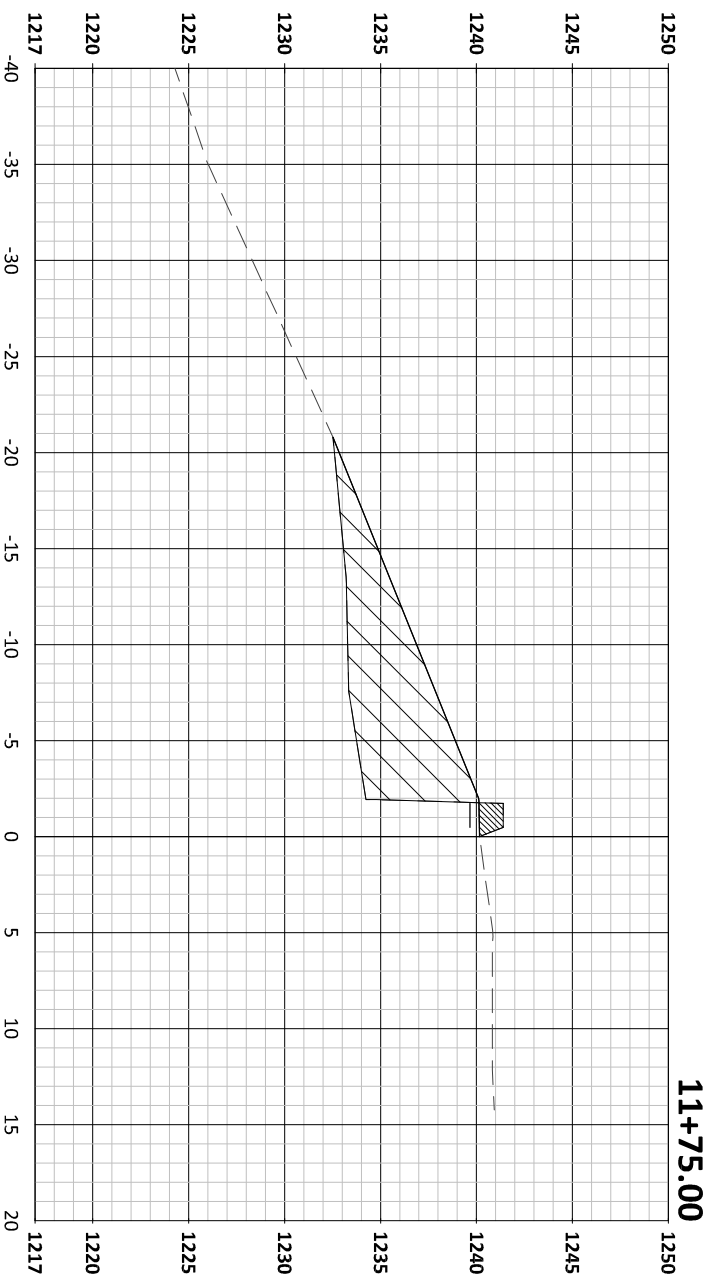
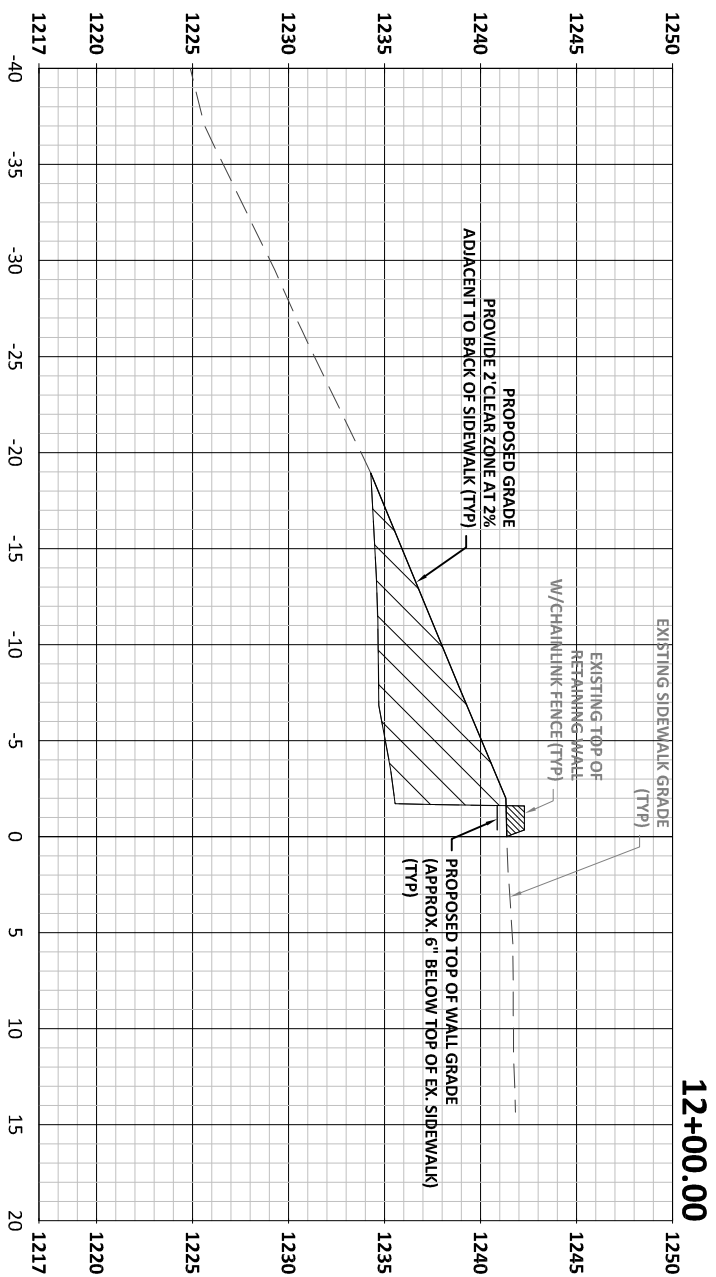
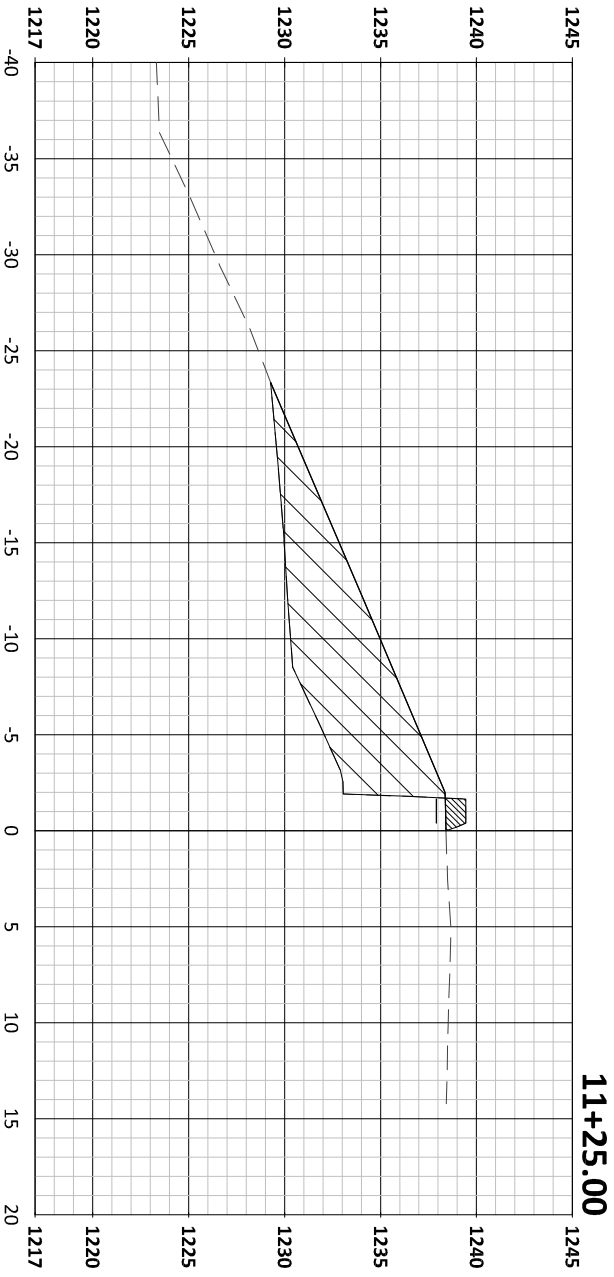
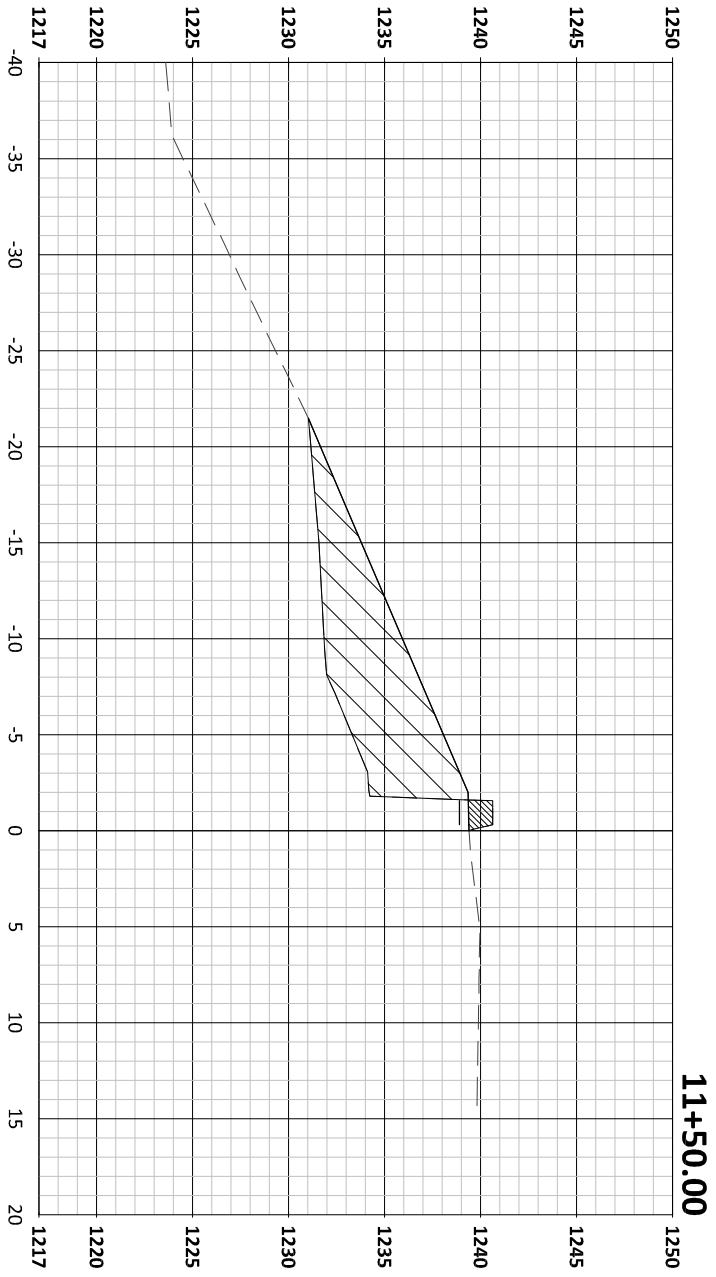
REVISIONS: J.D.VANBOXEL

SURVEYED BY: J.D.VANBOXEL
 FIELD BOOK NO. PG.
 PROJ. ENGINEER: T.J.NIKSICH
 DRAWN BY: J.D.VANBOXEL
 APPROVED BY: A.M.WESOLOWSKI
 POINT FILE:

TENTH STREET PARK
 FOREST ST TO JACKSON ST
 CROSS SECTIONS
 TENTH STREET PARK GRADING

SHEET NO. **1**
 OF 3 SHEETS

SCALE IN FEET
 0 5 10

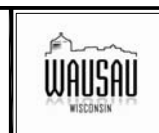


TENTH STREET PARK
 FOREST ST TO JACKSON ST
 CROSS SECTIONS
 TENTH STREET PARK GRADING

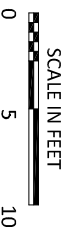
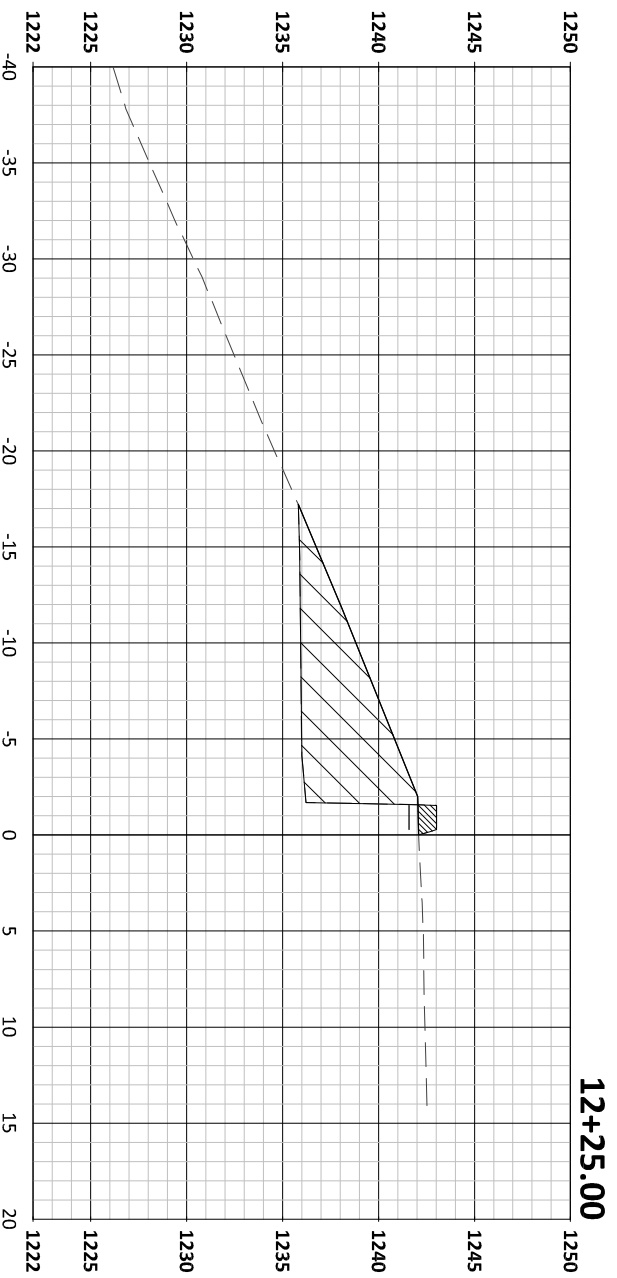
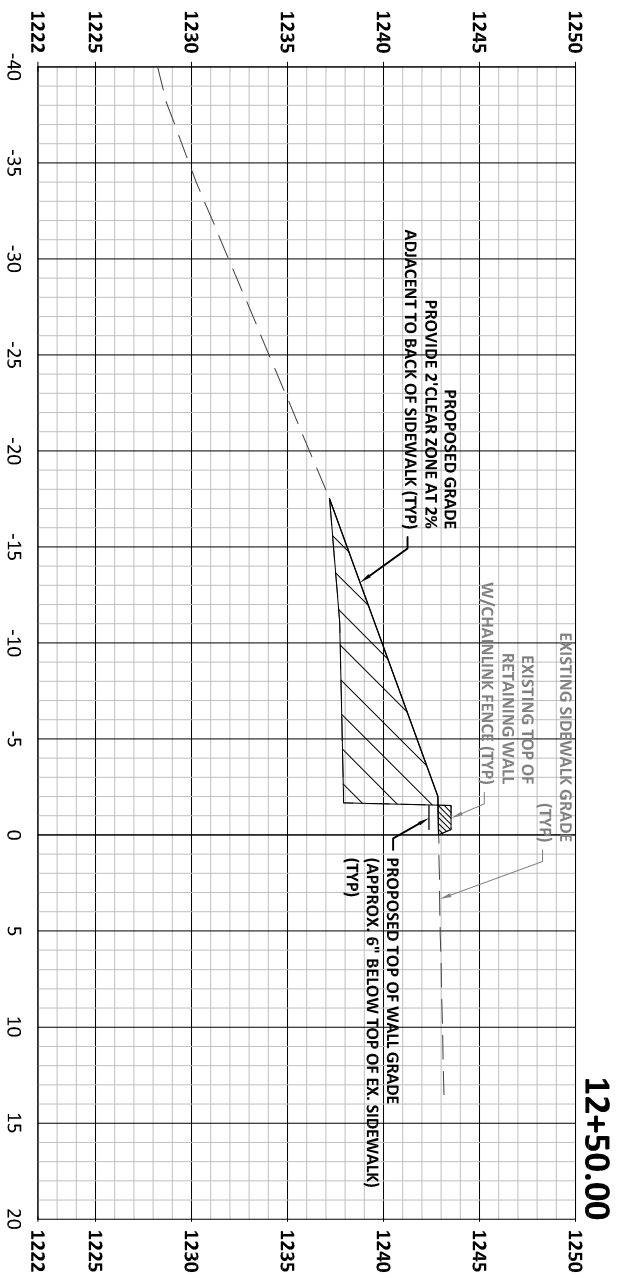
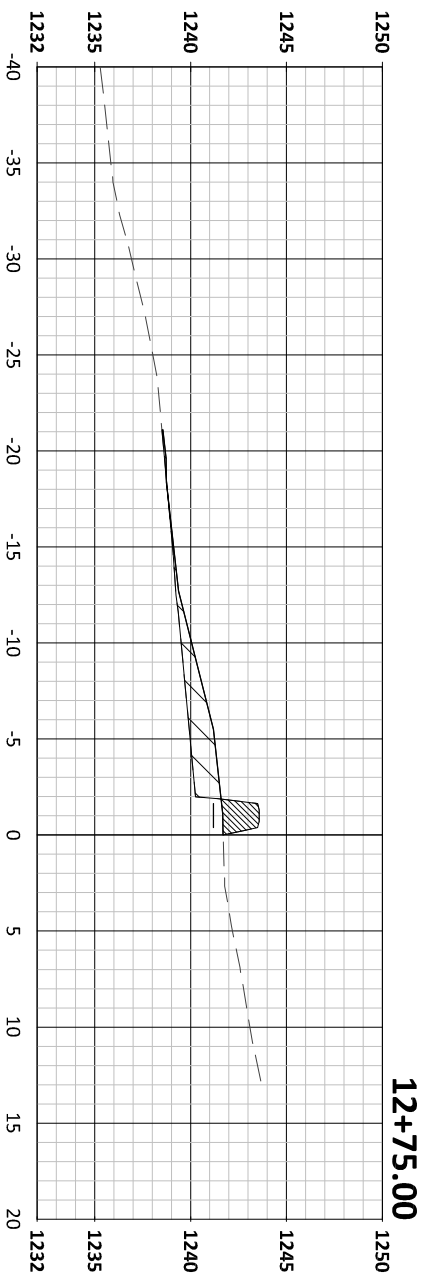
ISSUED FOR	DATE	REVISIONS
PRELIMINARY	07/15/2024	J.D.VANBOXEL
REVIEW/APPROVAL		
BIDDING/CONST.		
REC. REF. DWG.		
OFFICE USE		

DATE	REVISIONS
07/15/2024	J.D.VANBOXEL

SURVEYED BY: J.D.VANBOXEL
 FIELD BOOK NO. PG.
 PROJ. ENGINEER: T.J.NIKSICH
 DRAWN BY: J.D.VANBOXEL
 APPROVED BY: A.M.WESOLOWSKI
 POINT FILE:



CITY OF WAUSAU
 Engineering Department
 407 GRANT STREET WAUSAU, WI. 54403-4783
 (715) 261-6740 FAX (715) 261-6759



10th Ave Retaining Wall Estimate

WisDOT Spec				Short St	Short St
Section No.	Item	Unit	Unit Cost	Quantity	Costs
SPV	Remove Fence	LF	\$8.00	175	\$1,400.00
SPV	Remove Partial Stone Wall.	LF	\$10.00	175	\$1,750.00
205.0100	Excavation Common	Cu Yd	\$20.00	50	\$1,000.00
209.0100.S	Granular Backfill	Cu Yd	\$25.00	500	\$12,500.00
602.0405.S	Concrete Sidewalk 4"	Sq Ft	\$5.50	1000	\$5,500.00
602.0415.S	Concrete Sidewalk 6"	Sq Ft	\$6.50	100	\$650.00
602.0515	Curb Ramp Detectable Warning Field Natural Patina	Sq Ft	\$50.00	20	\$1,000.00
611.8110.S	Adjusting Manhole Covers	Ea	\$1,000.00	2	\$2,000.00
619.1000.S	Mobilization	LS	\$5,000.00	1	\$5,000.00
624.0200.S	Water For Seeded Areas	Mgal	\$150.00	2	\$300.00
625.0600.S	Topsoil, Seed, Fertilizer and Mulch	Sq Yd	\$8.00	500	\$4,000.00

Estimated Construction Cost	\$31,950.00
20% Contingencies	\$6,390.00



Emerald Ash Borer Management Plan

2016 Presentation

Topics To Be Covered



- ▶ What is an Ash
- ▶ What is Emerald Ash Borer (EAB)
- ▶ History of EAB in the U.S.
- ▶ Evolution of EAB Management Strategies in the U.S.
- ▶ Value and Benefits of Trees
- ▶ Status of Wausau Boulevard Ash Trees
- ▶ Suggested Management
- ▶ Management Procedure
- ▶ Benefit Versus Cost
- ▶ Questions

What is an Ash?



There are three primary varieties of ash planted as boulevard trees in Wausau (Green, White, and Black)



2003 © Peter M. Dziuk

<https://www.minnesotawildflowers.info/udata/r9ndp23q/pd3/fraxinus-pennsylvanica-018.jpg>



<http://forestry.ohiodnr.gov/portals/forestry/images/trees/ash-green.jpg>

Ash become a popular boulevard tree because of their ability to grow in difficult sites
Wausau has not planted ash since 2004

What is an Ash?

Ash was selected as a suitable replacement for American Elm

They establish easily, grow fast, are salt and drought tolerant, have strong wood, and were low cost



What is Emerald Ash Borer?



Emerald Ash Borer (EAB) is a beetle native to eastern Asia

- Adult emerges via a D shaped exit hole
- Approximately the size of a grain of cooked rice (3/8" -1/2" long)



<http://images.universityherald.com/data/images/full/5257/the-emerald-ash-borer.jpg>



<http://www.ojibway.ca/emeraldashborer.jpg>



<https://bugwoodcloud.org/images/768x512/5147090.jpg>

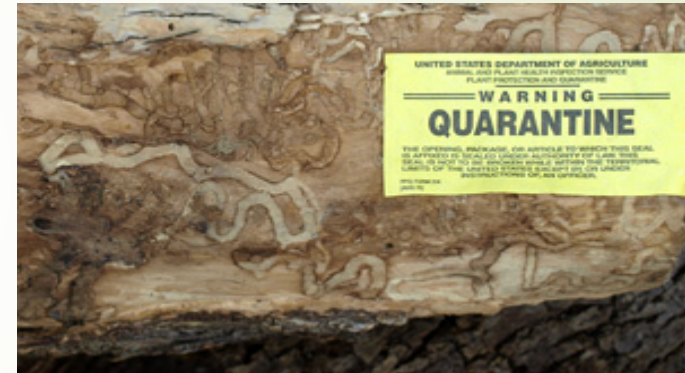
What is Emerald Ash Borer?



Larval life cycle is the most damaging



<http://steintree.com>



<https://www.nps.gov>



<https://www.thetoddgroupinc.com>

Effects of EAB



Signs of EAB

- It is likely you will not see an EAB adult
- Often tree health and appearance indicate insect presence



<http://www.ville.ddo.qc.ca/En/img/environnement/agrile-arbre.jpg>



Photos courtesy of the City of Toronto

Effects of EAB



Photo by Daniel Herms



<https://experiment.com/projects/can-we-save-ash-trees-from-the-invasive-emerald-ash-borer>

Effects of EAB



Credit: Jeffrey Hahn



<http://eminnetonka.com/community-forestry/shade-tree-disease-control/emerald-ash-borer>

Effects of EAB



Toledo, Ohio – Same street between 2006 and 2009



Photo by Daniel Herms

Effects of EAB



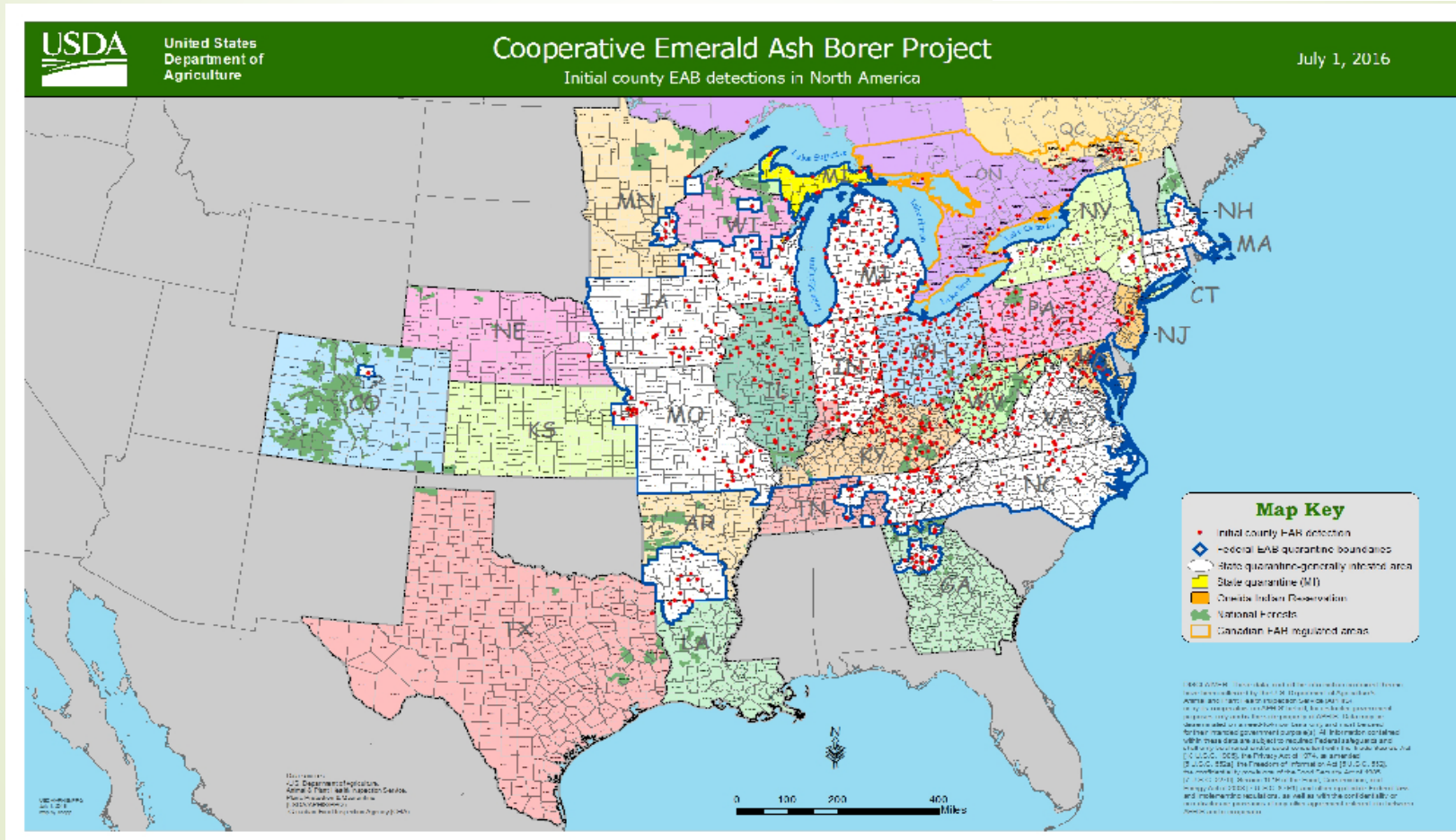
<http://ucanr.edu/blogs/blogcore/postdetail.cfm?postnum=16537>

History of EAB



- EAB was found in the Detroit area in the summer of 2002
- EAB was likely in the U.S. for up to 10 years prior to detection
- Origin was wood packing crates from Asia
- Found in Wisconsin in 2008
- EAB has been found in 27 states and has killed over 50 million ash
- Cost to municipalities and homeowners is in the hundreds of millions of dollars

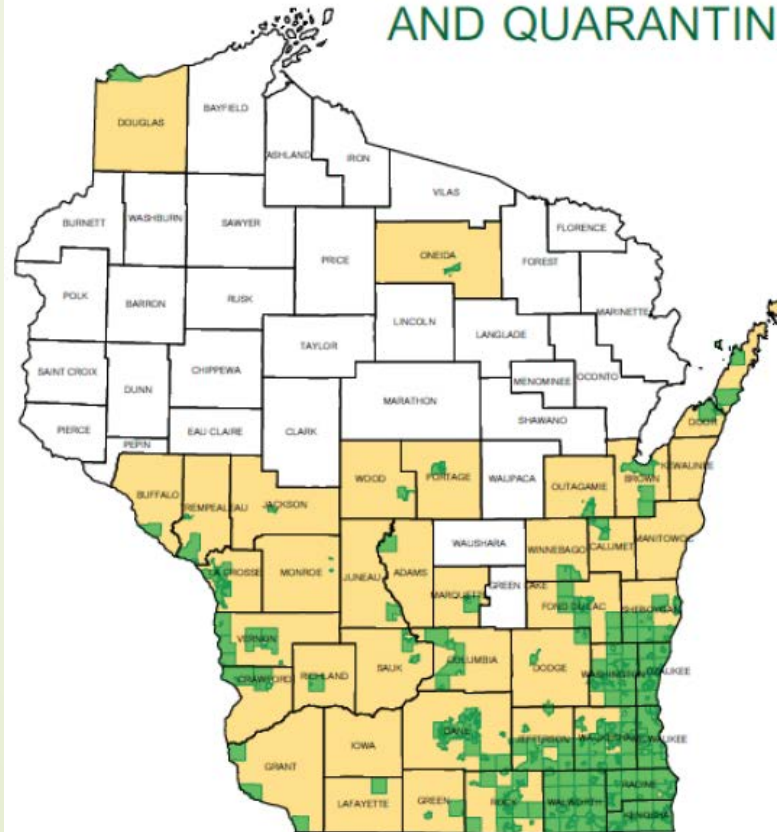
History of EAB






History of EAB



EMERALD ASH BORER DETECTIONS AND QUARANTINE IN WISCONSIN



Most of Wisconsin is EAB-free, including most of the northern half and the yellow areas in all quarantined counties. EAB has been confirmed only in those cities, villages and townships colored dark green. By following quarantine rules and limiting the transport of ash wood and all firewood, we can slow down EAB's spread to the northern forests and un-infested communities in the south. Visit www.emeraldashborer.wi.gov for information on what you can do.

-  Non-Quarantined County, No EAB Detections
-  Quarantined County
-  EAB Confirmed Area in a Quarantined County

Map last updated 6/20/2016

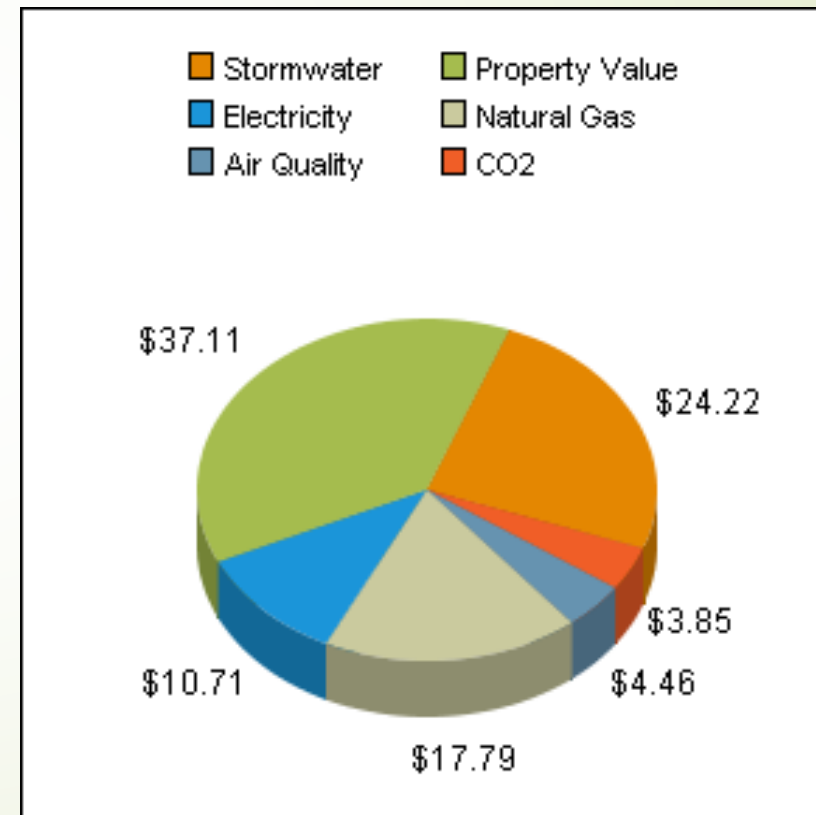
Image courtesy of Wisconsin Department of Natural Resources

Value and Benefits of Trees

The average ash in Wausau is 11.28".

Total benefit provided per year of a 11" green ash is **\$98**

Annual benefit for entire population of ash is approximately **\$505,000**

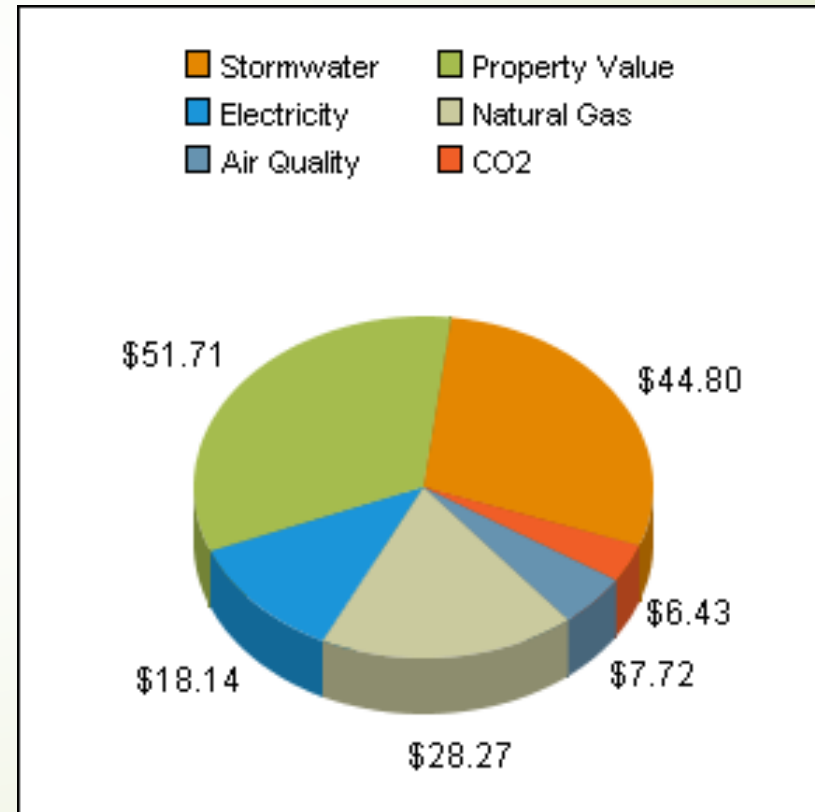


Value and Benefits of Trees

If that tree were grown to 16" ...

Total benefit provided per year of a 16" green ash is **\$157**

Annual benefit for entire population of ash is approximately **\$816,400**



Value and Benefits of Trees



Additional values trees provide:

- Properly placed trees can reduce cooling costs by 30%
- Increased life of asphalt surfaces
- Moderation of 'heat island' effect
- Lower crime rates
- Reduce sound pollution
- Trap dust, pollen, and smoke from the air

Status of Wausau Boulevard Ash Trees



Current ash population is approximately 5200
This represents approximately 20% of all boulevard trees
Of these trees, approximately 70% are in good or better condition
Average diameter is 11.28 inches based on a 50% inventory*

*Wausau is in the process of conducting a tree inventory.
At the time of this presentation, half of the boulevard trees
have been inventoried.

Evolution of EAB Management Strategies in the U.S.



- Began with an attempt to create an 'ash free zone' by elimination of 150,000 ash
- Remove ash within ½ mile of infection site
- Remove all ash prior to EAB presence
- Remove and replace ash with different species
- Treat high profile trees/remove and replace others
- Treat majority of population in order to conduct removals at a manageable level
- Treat all ash *Milwaukee, WI has chosen this option*



Suggested Management



To this point, we have been replacing ash with several different species:

- Hackberry
- Hybrid Elm
- Oak
- Linden
- Hop Hornbeam
- Honeylocust
- Maple...

Suggested Management



Maple, of all varieties are the most commonly requested replacement...

Species	Percent of Population
Maple (Acer sp.)	44
Ash (Fraxinus sp.)	19.7
Linden (Tilia sp.)	10.7
Crabapple (Malus sp.)	6.1
Lilac (Syringa sp.)	4.3
Hackberry (Celtis sp.)	3.4
Elm (Ulmus sp.)	2.6
Honeylocust (Gleditsia sp.)	2.5
Schubert Cherry (Prunus sp.)	1.6
Oak (Quercus sp.)	1.4
Ginkgo (Ginkgo sp.)	1
Other	2.7

Suggested Management



Due to the proximity of EAB to Wausau, we are suggesting the following over the next seven years:

- Remove poor condition ash annually on a priority basis
- Remove ash that die naturally (approximately 50 per year)
- Remove ash that correspond to street reconstruction projects
 - Total ash removed will amount to 30% of the current population
- Treat the 70% of the population that are in good or better condition
- Continue to replace ash with different varieties of trees

*We suggest this management plan be practiced for seven years, after which time we will re-evaluate and determine the next course of action.

Suggested Management



Wausau Ash Street Tree 7 Year Management Plan

Year	Population	Trees to be Treated	Trees to be Removed	Annual Treatment Cost	Planned Removal/Replacement Cost	Total Cost	Retained Value
0	5200	0	40	0	8010	8010	505680
1	4899	1715	261	151489	53307	204796	510180
2	4640	1624	259	149570	52898	202469	481910
3	4383	1534	257	147039	52490	199528	462112
4	4127	1444	256	143867	52285	196153	476133
5	3873	1356	254	140096	51877	191973	488565
6	3621	1267	252	135733	51468	187202	454815
7	3371	1180	250	130786	51060	181846	458787
				\$ 998,581.29	\$ 365,385.36	\$ 1,363,966.65	

The management objective of this plan is to retain the highest quality 70% of our existing ash street trees through insecticide treatment and remove the lowest quality 30% and replace them with other tree species over a seven year period. This process will keep annual costs more affordable, retain more of the benefits provided by street trees, and give more time for the rapidly evolving science of battling the emerald ash borer time to provide more effective, less costly options.

Management Procedure



There are multiple options for treating ash trees

The best option determined through research and industry standards is:

- Emamectin Benzoate (TREE-äge®)
 - Provides 2 years of coverage
 - Is systemic (product is contained within the tree)
 - Typical application time is 10-15 minutes per tree
 - Is >99% effective in killing EAB larvae in the first two years
- *Dependent upon initial condition of tree*

Benefit Versus Cost

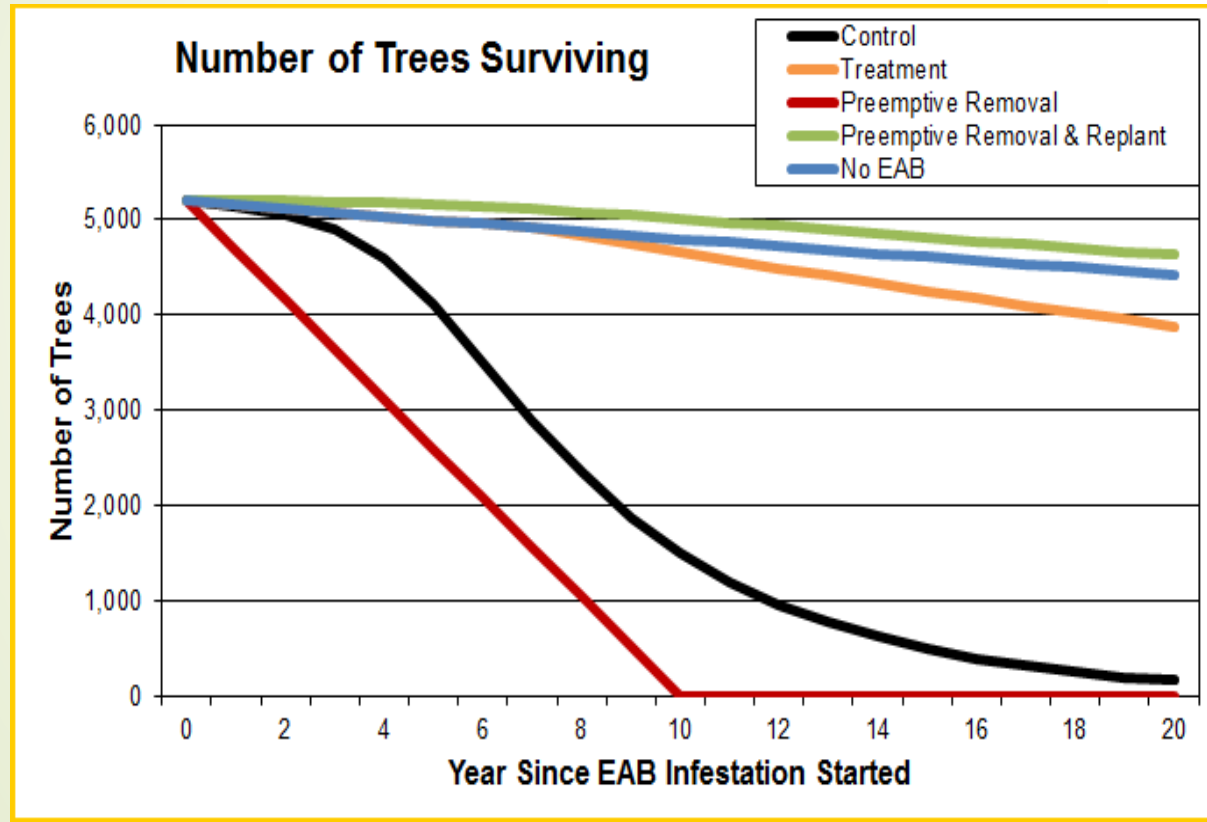


Emerald Ash Borer PLAnning Simulator (EAB-PLANS[©]) Version MKE

Developed by Dr. Rich Hauer and Andrew VanNatta (2015).
the University of Wisconsin – Stevens Point

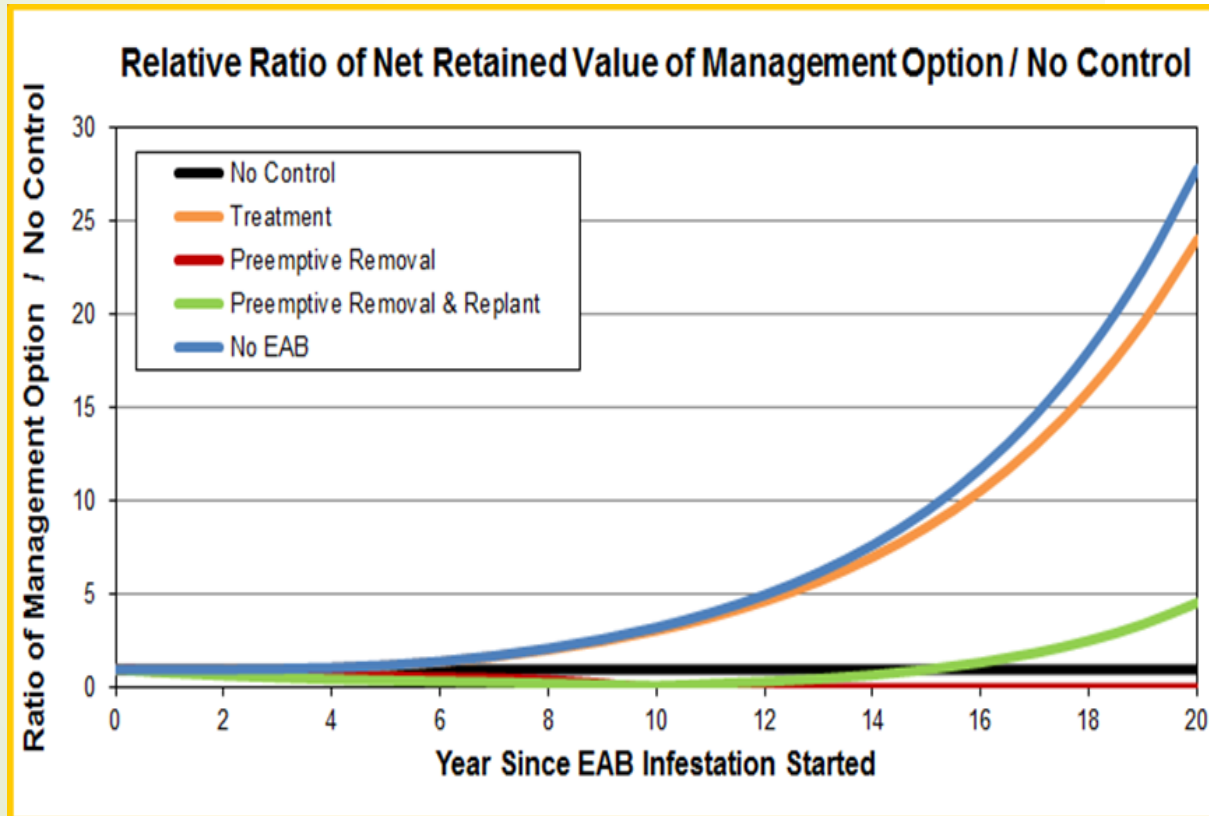
Assists communities in determining the best course of action for EAB
management

Benefit Versus Cost



Estimated number of individual ash that are expected to survive EAB over a 20 year time span for each management plan. **Control refers to "no control" of emerald ash borer.*

Benefit Versus Cost



*This chart represents a ratio. A value of 2 means the value has doubled and a value of 5 means the value is five times greater.

Estimated ratio of net value retained when comparing management options for no control, treatment, preemptive removal without replanting, preemptive removal with replanting, and no EAB over a 20 year period. A value > 1 suggests that alternative is better than the "No Control" (doing nothing).

Questions???



<https://www.ag.ndsu.edu/horticulture/emerald-ash-borer-overview-and-background>

OR



http://treepicturesonline.com/mountain_ash_tree_pictures.html

City of Wausau
Emerald Ash Borer Management Plan

Updated October 2021

EAB HOTLINE 1-800-462-2803

or

www.emeraldashborer.wi.gov

Acknowledgements

“This document was funded in part by an Urban Forestry Grant from the Wisconsin Department of Natural Resources Forestry Program as authorized under s. 23.097, Wis. Stat.”

Contents:

Introduction	page 2
History of Emerald Ash Borer	page 2
Plan Purpose	page 2
Authority to Act	page 2
Public Ash Resource.....	page 2
Assessment of Staff Training, Equipment Needs.....	page 3
Scope.....	page 4
Administration of Plan	page 4
Ash Management Recommendations	page 4
Prioritized preemptive Removals	page 5
Detection Methods	page 5
Marshalling Yard	page 6
Prioritized Treatment Schedule.....	page 6
Utilization/Disposal Methods	page 6
Tree Replacement	page 7
Reporting and Submitting EAB Suspects and Samples.....	page 8
Summary	page 9
Definitions	page 9

Introduction:

In 2002 the Emerald Ash Borer (*Agrilus planipennis*) or (EAB) was first discovered in Michigan near Detroit. Since that time it has spread to many other states. In August of 2008, EAB was confirmed in southeastern Wisconsin for the first time. Since then the insect has been confirmed in sixty-one counties. EAB was discovered in Wausau November of 2020.

For a complete History of the Emerald Ash Borer along with Description, Life Cycle, Signs, Symptoms (includes national and Wisconsin information)

www.emeraldashborer.info

Purpose of Management Plan

The provisions of this management plan are an attempt to mitigate the disruption to the urban forest caused by EAB. By taking a proactive approach to the eventual infestation the city will try to address this issue in an efficient and effective manner.

Authority to Act

Defined by Wausau Municipal Code, Chapter 12.56 Street Trees

Public Ash Resources at Risk:

In March of 2007 the City of Wausau completed an inventory of the ash tree population to determine the number and percentage of ash trees that comprised the total street tree population. The inventory revealed a total of just under 6,200 ash trees or approximately 25% of the street tree population. As of September 2021, there have been 1,843 ash street trees removed and most have been replaced. This still leaves a current population of 4,357 trees or 17.7% of the street tree population.

Number of trees

1"-6" - 279
6"-12" – 1,554
>12" – 2,524
Total = 4,357

The value of boulevard ash is \$3.16 million based on landscape value.

The total annual ecological benefits provided by the remaining ash trees is \$554,349.97.

The replacement cost of the ash trees is \$697,120 not including labor.

The approximate removal cost of the remaining ash trees is \$1,371,409.50 (tree removal, stump removal)

Tree condition – 33 poor, 3,917 good, and 407 very good.

2,844 trees are of a size and condition suitable for treatment. Treatment costs would be approximately \$44,000 per year.

The maintained or mowed portions of the Wausau City Parks have a total of approximately 276 ash trees. Non-maintained areas were not inventoried.

Number of trees

1"-6" - 18
6"-12" - 72
>12" – 45
Total = 135

The value of the park ash trees is \$83,295 based on landscape value.

The total annual ecological benefits provided by the remaining ash trees is \$12,863.73.

The replacement cost of the park trees is \$21,600.

The approximate removal cost of the remaining ash trees is \$33,534 (tree removal, stump removal)

The city is not considering a treatment option for park trees at this time.

Assessment of Staff training and Equipment needs:

Staff training for EAB identification and detection is ongoing and will continue.

Equipment needs are being evaluated and assessed on an ongoing basis. The department has added a brush chipper with the capacity to handle larger diameter wood. The department has requested an additional arborist position to maintain service levels prior to EAB detection. Additional funds have also been requested due to the detection of EAB and direction given by Park Committee to remove and replace all boulevard ash within the next 12-15 years. Park staff is at or above maximum capacity to accommodate additional tree removals at this time. Since the additional removals from EAB will be relatively consistent over this time, contracting would be the most prudent method to handle additional removals which corresponds to the request for increased funding.

Scope:

This plan will encompass the city limits of the City of Wausau.

Administration of Plan:

This plan will be administered by the City of Wausau Park Department the main contact is the Park Forester (715-261-1561)

Ash Management Recommendations:

Pre-EAB

The City of Wausau has taken a proactive approach to EAB. Upon hearing of EAB in Michigan in 2002 and monitoring the progress of EAB through professional trade publications and internet research for an appropriate time period, ash trees were no longer planted after the spring of 2004. In 2007 all public ash trees were inventoried and recorded.

As part of our urban forestry program we are routinely assessing the tree population and removing poor quality trees of all species. Initial removal of ash trees followed the same criteria and were restricted to those in poor condition, those in poor planting sites and ash growing under overhead electrical wires. Requests from homeowners to remove trees for various reasons were evaluated as in the past but were generally granted to reduce the ash tree population. These criteria did not allow for a significant reduction of the ash population.

Prioritized preemptive Removal:

In 2009 a more focused effort was used to reduce the number of ash trees by removing ash trees impacted by street construction projects. This practice still continues and has become more focused with the removal of all of the ash trees on street construction projects. In 2010 ash trees that were identified that had poor structure for various reasons (crowding, etc.) were targeted for removal, this process is ongoing. Electrical line clearance contractors have been encouraged to aggressively target ash trees growing under high voltage lines. In late 2011 residents and businesses along streets with heavy ash populations were contacted and informed that every other ash tree would be removed. Identified trees were generally in the smaller size classes with poor condition trees targeted. Removals occurred during winter months, stumps were removed in the following spring and summer. Tree replacement is being scheduled as needed. Many areas were over planted or trees were planted in poor locations and additional trees will need to be removed for better tree placement. In 2020 there were very low snow conditions enabling crews to conduct ash removals in parks. Approximately 140 ash trees were removed from parks winter of 2020/2021.

The department provided updated information to the Park Committee regarding finding EAB damage in a boulevard tree. The find was in November, 2020 which called for a revised plan to address ash trees in Wausau. The result of this meeting was that the department will move forward with removal and replacement of all boulevard ash within 12-15 years starting in 2022.

Post EAB

After confirmation of EAB in Marathon County or the City of Wausau the County will have quarantines placed on it in accordance to the State of Wisconsin response guidelines. USDA and DATCP will work with State officials, and affected communities and industries to minimize the impact of quarantines. State regulations would need to be followed on movement of wood products and all options for mitigating EAB impact would need to be reexamined.

Detection Methods:

Detection methods utilized will be visual inspection of ash trees with symptoms consistent of EAB. Ash trees to inspect will be determined by observation of Park staff, contact received by citizens and private tree services. Suspect trees will be further tested by branch bark peeling and looking for EAB larvae.

Marshalling Yard

At this time the City of Wausau Yard Waste site is the only location for residents to dispose of brush and wood waste. The yard waste site is located on the 100 block of Chellis St. adjacent to the Department of Public Works. The site is approximately 1/1/2 acres in size and will be inadequate when EAB fully impacts the City of Wausau. There have been discussions with public officials and the Public Works Director on the need for larger and or alternate sites for public use. When EAB becomes established in the area this issue will be re-addressed and a single larger or number of smaller alternate sites will be designated.

Prioritized Treatment Schedule:

Our current inventory has identified ash that are a priority for chemical treatment. The objective to treatment is to prolong the life of treated trees and not to maintain the tree long-term. Treatment will be budget dependent. The City of Wausau will allow resident to contract with private parties to treat public trees that have not been identified for treatment by park staff.

Utilization/Disposal Methods:

The city has in the past and will continue to research and support alternate wood waste utilization. The sale and processing of quality logs into useable lumber for construction, furniture, flooring, etc. has been used for several years. Sale of lower quality logs for firewood use pulpwood and boiler fuel has been an option that we have used in the past and will continue.

With the construction and opening of the We Energies biomass plant in Rothschild a large percentage of wood debris from the City of Wausau Street and park tree system will be converted to biofuel. WE Energies consultants have been in contact with the City of Wausau on the volume of wood products that would be available and delivery alternatives. The proximity of this facility to Wausau may provide a mutually beneficial relationship for our chipped material

as well as low quality and oversized wood that is difficult to market. In 2020 the City Forester reached out to a private contractor for utilization of urban ash trees. This partnership has resulted in increased wood sales and a higher level of utilization. Lastly, the Wausau School District has purchased a portable mill and will be using some of Wausau's wood to fulfill curriculum needs.

Tree Replacement:

Tree species to replace ash are being considered and introduced to the Wausau Street and Park tree system. Replacement of public trees removed will be with non-host species that are appropriate to the physical site.

This list will be updated as new species are proven successful and is not inclusive.

Tree replacement will be determined by budget but will generally be in the fall or spring after trees have been removed.

Species

Crabapple

 'Spring Snow'

 'Pinkspire'

 'Velvet Pillar'

Elm

 'New Horizon'

 'Regal'

 'Triumph'

Ginko

 'Autumn Gold'

 'Princeton Sentry'

Hackberry

Hawthorn

 'Cockspur'

Kentucky Coffeetree

 'Espresso'

Lilac

 'Beijing Gold'

 'Ivory Silk'

 'Summer Charm'

Linden

 'American Sentry'

'Boulevard'
'Greenspire'
'Glenleven'
'Redmond'
Honeylocust
'Shademaster'
'Skyline'
Maackia Amur
'Starburst'
'Summertime'
Magnolia
'Merrill'
Manchurian Alder
'Prairie Horizon'
Oak
'Northern Pin'
'Regal Prince'
'Swamp White'
Pear
Callery
'Chanticleer'
River Birch
Serviceberry
'Autumn Brilliance'

Reporting and Submitting EAB Suspects and Samples:

HOTLINE: 1-800-462-2803

E-MAIL: eab@datcp.state.wi.us

Insect samples will be forwarded to DATCP

WI Dept. of Agriculture, Trade and Consumer Protection

**2811 Agriculture Drive
Madison, WI 53718-6777**

How to Collect and Preserve Insect Specimens

(Do not send live insects)

www.entomology.wisc.edu

Summary:

With EAB detected in the City of Wausau and Marathon County, this document will need to be updated as new infestations are discovered and new treatment and management options are developed. Public officials have been updated at staff and committee meetings and will be updated as the need arises. The general public will continue to be updated on EAB through the city newsletter, radio, newspaper articles and local access public radio announcements.

Definitions:

DATCP – The state of Wisconsin Department of Agriculture, Trade and Consumer Protection. Agency responsible for the State of Wisconsin Emerald Ash Borer response plan. Authority to issue quarantines that restrict the movement of EAB infected material.

EAB – The emerald ash borer insect.

Marshalling Yard – Fenced in location where infested brush and logs are collected for further processing.

Preemptive Removal – Tree removal prior to becoming infested.

USDA – United States Department of Agriculture.