

CITY OF Wausau WORKS FOR YOU



FALL 2024



Dear Residents,

I hope you are enjoying our fall weather.

BUDGET SEASON: At city hall, the writing of the 2025 budget is underway. The creation of a city budget can seem like a black-box process. Stuff goes in, and something comes out. What happens in between is a mystery. However, that “in between process” has a profound effect on shaping outcomes.

VALUE PROPOSITION: People can argue philosophically about whether more or less government is good, but we do not exist in a vacuum. Wausau is one of 604 cities and villages in Wisconsin. How you value the delivery of good services at a fair price is what matters. When we do not meet that mark, we place the city’s economy at a competitive disadvantage. Relatively fewer people and businesses will locate here.

BUDGET GUIDANCE: Five years ago, Wausau was the 17th largest municipality in Wisconsin. Today, we rank 19th. We are off the mark and slipping because of it. Added this year will be double digit medical coverage increases. That is why, on August 13th, I gave department heads the following instructions:

- Prepare a budget to continue existing operations.
- Prepare proposals to reduce expenses by 2.5%.
- Understand that subsequent amendments to the budget will only be considered in the direst of circumstances.

LESSONS LEARNED: Past practices allowed departments to:

- Prepare a cost-to-continue budget.
- Prepare a wish list of “supplemental budget requests.”
- Begin requesting budget amendments as early as January.

Historically, we have had a process that only considered increases to the city budget and never seriously examined discontinuing the lowest priorities.

If a local unit of government provides good services at a fair price, it can grow its revenue without raising its mill rate. Since 2010, Wausau has raised its mill rate 11 of 12 times for a total rate increase of 27.9%. By contrast, during the same time, the Wausau School District lowered its mill rate 7 times for a net change of -7.8%. That is an example of how a flawed budget process stacks the deck in favor of tax increases only.

YOUR VOICE: While these process changes should have an impact, what matters most is your participation. Consider writing or emailing your council member. Their contact information is in this newsletter. All of them have city voice mail numbers. Take time to come to one of the budget hearings conducted by the Finance Committee or the Council itself. Ultimately, it is the City Council that sets the tax rate and the budget on your behalf. You have a say.

Doug Diny

Inside this Issue

2024 Leaf Pick Up Map	2
Leaving Your Leaves	4
Pruning Boulevard Trees	4
Fire Safety	5
WAUSOME!	6
Presidential Election	7
Building Permit Information	8
Know the Rules of Electric Bikes	9
Personal Preparedness	10
Yard Waste Site Hours	10
Affordable Housing	11
Pollinator Garden	11
WWW Schedule of Rates	12
WWW Delinquent Notices	12
Residential Cross Connection Survey	13
28th Avenue Street Project	14
Holiday Trees Needed	14
Halloween Safety Tips	15
Thanksgiving Safety	15
Trick or Treating Hours	16
Wausau Area Events	16

Vision Statement...

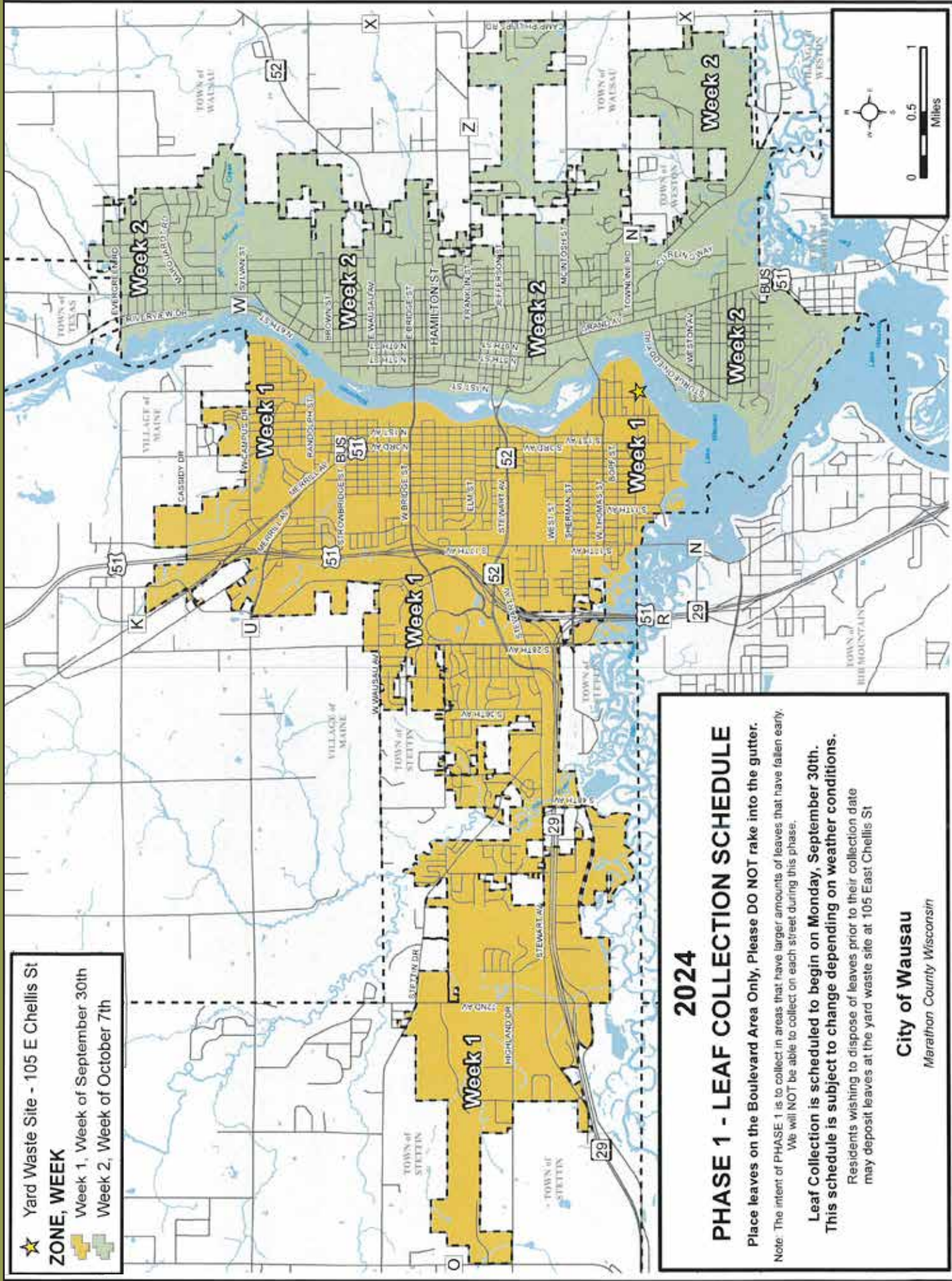
Wausau is a fun, vibrant, and highly connected community providing diverse and accessible social, arts, cultural and outdoor recreational experiences and a thriving economy where everyone has the opportunity to achieve success and happiness.

City Hall


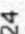
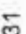

407 Grant St.
Wausau, WI 54403
715-261-6500
General Hours: M-F, 8-4:30

2024 Leaf Pick Up

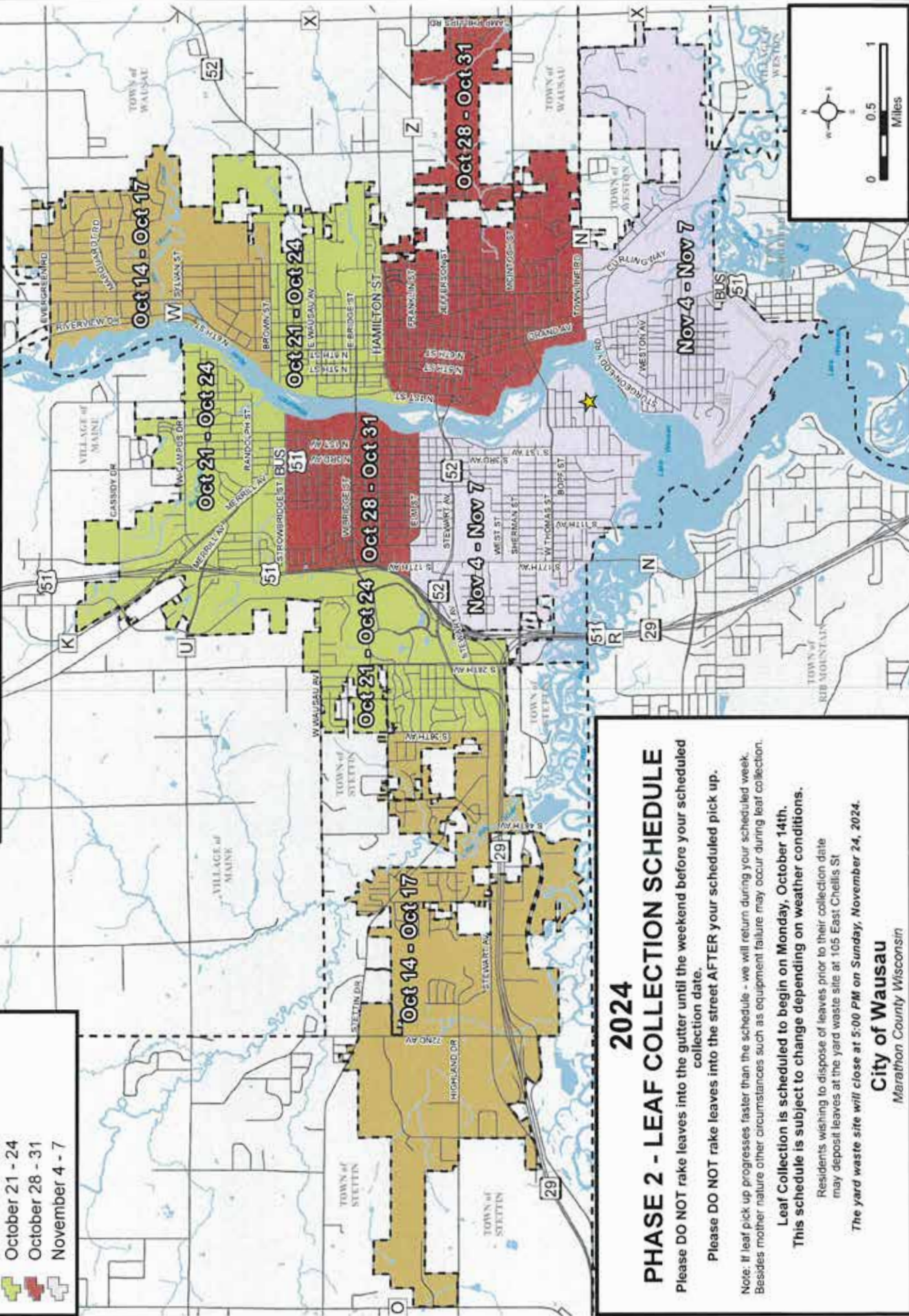
☆ Yard Waste Site - 105 E Chellis St
ZONE, WEEK
 Week 1, Week of September 30th
 Week 2, Week of October 7th



2024
PHASE 1 - LEAF COLLECTION SCHEDULE
 Place leaves on the Boulevard Area Only, Please DO NOT rake into the gutter.
 Note: The intent of PHASE 1 is to collect in areas that have larger amounts of leaves that have fallen early. We will NOT be able to collect on each street during this phase.
Leaf Collection is scheduled to begin on Monday, September 30th.
This schedule is subject to change depending on weather conditions.
 Residents wishing to dispose of leaves prior to their collection date may deposit leaves at the yard waste site at 105 East Chellis St
City of Wausau
 Marathon County Wisconsin

- ★ Yard Waste Site (105 E Chellis St)
- Collection Date 2024**
-  October 14 - 17
-  October 21 - 24
-  October 28 - 31
-  November 4 - 7

NO HOSTAS! NO STICKS! NO FLOWERPOT PLANTS!
THESE ITEMS JAM THE LEAF COLLECTION MACHINE!!



2024
PHASE 2 - LEAF COLLECTION SCHEDULE
 Please DO NOT rake leaves into the gutter until the weekend before your scheduled collection date.
 Please DO NOT rake leaves into the street AFTER your scheduled pick up.
 Note: If leaf pick up progresses faster than the schedule - we will return during your scheduled week. Besides mother nature other circumstances such as equipment failure may occur during leaf collection.
 Leaf Collection is scheduled to begin on Monday, October 14th.
 This schedule is subject to change depending on weather conditions.
 Residents wishing to dispose of leaves prior to their collection date may deposit leaves at the yard waste site at 105 East Chellis St.
 The yard waste site will close at 5:00 PM on Sunday, November 24, 2024.

City of Wausau
 Marathon County Wisconsin

This fall save time and reduce your workload by **LEAVING YOUR LEAVES!**

Why? Insects like fireflies, moths, butterflies, bees, and stick bugs spend part of their lifecycle overwintering in leaf litter. Removing the leaves sweeps away a world teeming with next spring's life, so doing less actually does more good!

Insects are in dire trouble.

40% of all insect species have declined globally and another 33% are endangered. Their loss not only threatens the birds we love to see in our yards, but endangers the food sources our lives depend upon.

Insects pollinate crops that feed us, control pests, help clean up waste, improve soil health, and are an important food source for many other species.

More than 1 in 4 birds have disappeared in the last 50 years (nearly 3 billion birds!) due to loss of habitat and food sources such as insects.

What can we do?

- 1. Leave your leaves!** (They are literally called leaves, so we should leave them!) Bumblebees nest in them, birds forage in them, and butterflies overwinter in them. Leaves provide nutrient-rich mulch, help retain moisture, regulate soil temperatures, and keep weeds in check. As they break down, leaves add valuable nutrients to the soil. Pine needles also make an excellent, cost-free mulch and, despite common belief, won't acidify your soil. (*Invasive plants and pests can travel in purchased mulch, so your own leaves are actually a preferred resource.)
- 2. Leaving your leaves creates a cozy shelter for overwintering pollinators.** This layer, the Subnivean Zone, is full of life! The earth's warmth melts the snow

at ground level while the leaves and twigs create a protective ceiling, keeping the space from freezing. The vast majority of insects and invertebrates remain in your yard over winter and will live and grow in this layer.

- 3. Leave the leaves whole** (don't shred them)! Whole leaves provide better cover and shredding destroys the pollinator eggs, caterpillars, and chrysalises in the leaves. If you have too many leaves, offer them to neighbors who understand what a rich resource they are.
- 4. Plant a perennial garden.** Fall is a great time to plant! Consider replacing some of your lawn with native plants. Endangered species can be brought back from the brink of extinction if we plant native perennials wherever possible - even in small spaces!
- 5. Leave perennials standing** (don't cut them down!). The seed heads of perennial plants provide winter food for seed-eating birds such as finches, chickadees, and more. The stems and stalks create vital shelter for native bees during hibernation and nesting sites for birds in the spring.
- 6. Avoid using pesticides,** herbicides, and fungicides and contact a horticulturalist through UW-Extension for safe alternatives.

More information and sources:

Tebo Davis, Mary, Urban and Community Natural Resources Field Specialist. *Leaving Leaves and Flower Stalks for Wildlife*. University of New Hampshire Extension, September, 2022.

For more information and source material. Got to: <https://www.wausauwi.gov/for-residents/sustainability>

Pruning Suckers and Watersprouts on Boulevard Trees

Have you ever noticed how certain species of trees can't seem to decide if they want to be a tree or a shrub? No, I'm not referring to a hybrid or some other genetic variation where different plants are exhibited from the same root stock. I am speaking of the dreaded SUCKER.

Suckers, originating from the base of a tree and watersprouts, originating along the trunk can be quite a nuisance or even a hazard if allowed to grow too large. These adventitious branches are prolific growers and not only become difficult to mow around, but can become a visual obstruction while exiting driveways or approaching stop signs.

Although pruning of boulevard trees is prohibited by Chapter 12.56 of the Wausau Municipal Code, removal of suckers is permitted and even encouraged. Some species (linden/crabapple/pear) often produce suckers annually, and removing the new shoots can be a quick and easy way to prevent issues in the future. These new shoots are often about the size of a pencil and can be removed with a pruning shear.

Please refer to the picture to understand the distinction between suckers (originating at the base), watersprouts (small shoots from the trunk), and low branches. Low branches are off limits for residents to prune.

If these suckers have gotten too large and need to be addressed by our staff please don't hesitate to contact us at parkforestry@marathon.wi.us or (715) 261-1550.



Close Call: The Importance of Fire Safety

“FOR IMMEDIATE RELEASE: On Saturday, August 17th, the Wausau Fire Department (WFD) responded to a reported structure fire at a two-story, wood-frame multi-family residence, where the prompt and coordinated efforts of WFD personnel led to the safe rescue of three occupants from the second floor.

At approximately 2:40 p.m., WFD units were dispatched to the scene. The first WFD unit arrived within three minutes, confirming visible smoke. WFD Engine 3 arrived shortly thereafter, reporting a working fire on the second floor.

Engine 3 immediately deployed a handline to the rear of the structure, attacking the visible flames from the exterior. Once the exterior fire was under control, the crew made entry to continue the interior attack.

Shortly after arriving on the scene, WFD personnel identified three occupants in a second-floor window. Ladders were swiftly deployed, and all three occupants were safely rescued without injury.

Fire crews continued their aggressive efforts as the fire extended into the attic. A comprehensive overhaul and sustained water application were necessary to fully extinguish the fire. Post Date: 8/19/2024”

At the Wausau Fire Department, our mission is to provide rapid, professional emergency services to protect and enhance our community. We are proud of our crews’ adherence to this mission, as demonstrated by their rapid response and professionalism in rescuing the victims and extinguishing the fire. In any “close call” incident, reflecting and learning from the experience is crucial. In this article, we aim to enhance our communities safety through education and prevention, emphasizing the importance of fire safety. Here are four key statistics from the National Fire Protection Association and CDC for us to review, aimed at helping to keep you and your family safer.



Did you know?

- Almost 3 of every 5 home fire deaths resulted from fires with no smoke alarms or no working smoke alarms (NFPA)
- Unattended cooking is the #1 cause of home fires (NFPA)
- National Fire Protection Association (NFPA) reports that you may have less than two minutes to escape after your smoke alarms sound.
- Carbon monoxide is the #1 cause of accidental poisoning in the US (CDC)

Here are four key ways to protect you and your family:



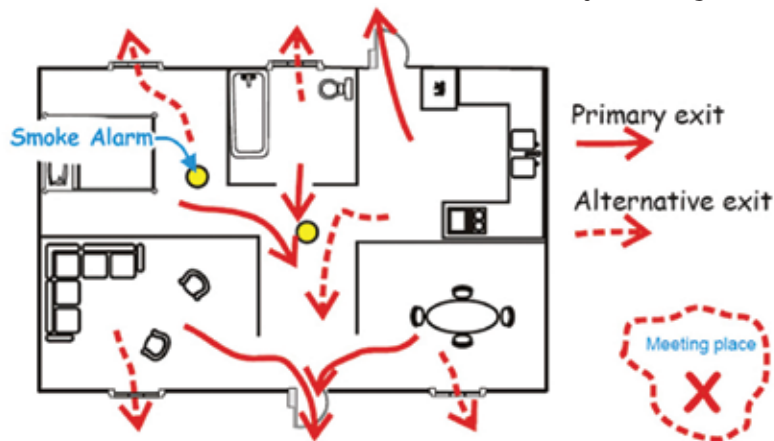
1. Install Smoke Alarms

- Smoke alarms are crucial for early warning in the event of a fire. The National Fire Protection Association (NFPA) recommends installing smoke alarms on every level of your home, inside each bedroom, and outside every sleeping area. In the basement,
- Place a smoke alarm at the bottom of the stairs leading to the next level.
- The NFPA recommends testing your smoke alarms at least once a month to make sure they’re functioning properly. Additionally, you should replace the batteries every six months or as soon as you hear a low battery chirp.
- Choose the smoke detector that best suits your needs. There are various types, including battery-operated, 10-year sealed battery, and hardwired models. While all are effective at detecting smoke and fire, the right choice for you will depend on your home’s layout and your family’s specific needs.



3. Have an Escape Plan

- Walk through your home with your family and identify at least two exit routes from each room. Ensure that all windows and doors are unblocked and can be easily opened. This way, you'll have multiple options for safely exiting any room in case of an emergency.
- For two story houses, consider equipping bedrooms with escape ladders
- Designate a meeting spot outside, such as the mailbox, a tree, or a neighbor's house, that is a safe distance from your home. Ensure that everyone in the household knows this location and understands that it's where they should gather after exiting the house.



2. Practice Kitchen Safety

- Always stay in the kitchen while cooking. Whether you're simmering, roasting, baking, or frying, an adult should be present in the kitchen at all times to monitor the food and prevent it from burning.
- Unplug countertop appliances, such as toasters and coffee makers, when they're not in use to lower the risk of a fire. After cooking, always turn off the appliance you're using. Additionally, be sure to clean off any leftover dust, food crumbs, and grease from your stovetop after each use.
- Keep the kitchen free from clutter to minimize fire hazards. Remove any items that don't belong in the kitchen, and be cautious with flammable materials like oven mitts, wooden utensils, towels, curtains, and excess food packaging. Make sure these items are kept away from the stovetop to reduce the risk of a fire.

4. Understand Carbon Monoxide & Install CO Detectors

- Carbon monoxide (CO) is an invisible, odorless gas. It is a common by-product of incomplete combustion, produced when fossil fuels (like oil, gas or coal) burn.
- Carbon Monoxide (CO) can be produced by the combustion that occurs from a fuel-burning appliance like a furnace, clothes dryer, range, oven, water heater, or space heater.
- Since you can't see, taste, or smell carbon monoxide, it's crucial to install carbon monoxide detectors in your home. These devices can alert you to the presence of this dangerous gas, helping to protect your safety and well-being.
- Maintaining and installing carbon monoxide detectors is similar to smoke detectors. It's recommended to install a CO detector on every floor and in every bedroom. Test and replace the batteries in your CO detectors alongside your smoke detectors. Additionally, select a detector that best suits your family's needs for optimal protection.





November 5th is PRESIDENTIAL ELECTION DAY!

SEPTEMBER 19

The Clerk's Office starts mailing absentee ballots daily to voters with active absentee applications. Voters can track their ballots at myvote.wi.gov

OCTOBER 16

Last day for electors to register to vote by mail or online in the General Election. After this date, electors must register in person.

OCTOBER 31

Deadline for regular and overseas electors to request absentee ballots by mail. Ballots will be mailed within 24 hours of receiving a request.

POLLING LOCATIONS

District

Location

1 & 2	Lakeview Conference Center, 1000 Lakeview Dr
3 & 10	Marathon Park East Gate Hall, 801 Garfield Ave
4 & 5	Thrive Church, 400 Grand Ave
6	Good Shepherd Lutheran Church, 930 Edgewood Rd
7 & 8	St. Mark's Lutheran Church, 600 Stevens Dr
9 & 11	National Guard Armory I, 833 S 17th Ave

Visit myvote.wi.gov to see which district you live in.

ABSENTEE VOTING BY MAIL

Absentee ballots are being mailed to voters. Eligible voters can request a ballot be mailed to them until October 31 at 5:00pm :

- Online at myvote.wi.gov
- By mail, email, or fax

Ballots need to be returned to City Hall by 8:00pm on Election Day! You can track the status of your ballot (preparing, mailed, returned) at myvote.wi.gov.

Scan the code to discover:

- How to register to vote
- Acceptable photo IDs & proof of residence
- More information on Badger Book e-pollbooks



IN PERSON

ABSENTEE VOTING

In person absentee voting allows electors to vote in person before election day. It will be held at City Hall in the Council Chambers:

- **October 22:** 8:30am - 4:30pm
- **October 23 - October 25:** 8:00am - 4:30pm
- **October 28:** 8:00am - 4:30pm
- **October 29:** 8:30am - 4:30pm
- **October 30 - November 1:** 8:00am - 4:30pm
- **November 2:** 8:00am - 12:00pm

REMINDERS FOR VOTERS

All poll sites are open from 7:00am - 8:00pm

All voters will need to show a valid photo ID to receive a ballot

Inspections



The Division of Inspection, Zoning and Electrical Systems provides inspection services and direction for construction of all new residential, commercial, and industrial buildings within the city, as well as existing residential additions and alterations.

A building permit serves as formal and legal permission to begin construction on a project. Once issued, the permit confirms that project plans for a new structure, addition, renovation, foundation, plumbing, air flow system, fireplace, deck, electrical, and other building components have been approved by the City and that plans comply with all mandated state and local building codes and zoning laws..

**A complete list of permit requirements is available on-line at:
www.wausauwi.gov/your-government/inspections**

To submit your permit application, please visit <https://evolveportal.ci.wausau.wi.us/>. Through the portal you can submit applications and manage your permits. All applications submitted will be evaluated for completeness before being reviewed and approved by an inspector(s), so please be sure to look over each application carefully..

If you require an in-person meeting with an inspector or have questions regarding permits, please email inspections@wausauwi.gov or call 715-261-6780 to schedule an appointment.

Have you recently had your furnace or water heater replaced but never scheduled an inspection? Please call 715-261-6780 and we can get that scheduled for you.

Trash and Recyclable Containers:

- Trash containers and recyclable containers shall not be set out for collection any sooner than 3:00 p.m. of the day before pickup, and all containers shall be removed from the curbside/boulevard area by 11:00 a.m. of the day after pickup.
- Between pickups, trash and recyclable carts should be stored in a garage, shed, or kept behind or on the side of the house. Containers cannot be stored at the front of the house or on a corner lot side yard.

Keeping a safe & healthy community!

City residents take great pride in maintaining their property.

- Lawns shall be maintained to a height not to exceed 12 inches. Landscaping shall be maintained so as not to present hazards to adjoining properties or to persons or vehicles traveling on public ways. Property owner maintenance responsibilities include the boulevards and along alleyways.
- Exterior areas shall be maintained in a clean and sanitary condition, free from any accumulation of items, garbage, debris, yard waste.
- Yard waste, including grass clippings cannot be placed on the streets, the alleys, boulevards, gutters, or right-of-way.
- Dog/animal excreta must be picked up in a timely manner, to minimize health hazards.
- Furniture, not intended for outdoor use, is not allowed on yards or open porches.



Check out the following link for more property maintenance reminders:

<https://www.wausauwi.gov/your-government/inspections/property-maintenance>

Navigating Wausau's Roads with Electric Bicycles, Motor Bicycles, Scooters, and One-Wheels: Know the Rules

As electric mobility devices such as electric bicycles (e-bikes), electric scooters, and electric one-wheels become more popular, it's important to understand the state laws and city ordinances that govern their use. The Wausau Police Department is committed to ensuring that all residents and visitors can safely and legally enjoy these devices on our streets, trails, and sidewalks.

Electric Bicycles (E-Bikes)

State Law:

Wisconsin law classifies e-bikes into three categories based on speed and electric motor assistance:

- **Class 1:** Motor provides assistance only when the rider is pedaling and ceases when the bike reaches 20 mph.
- **Class 2:** Motor may propel the bike without pedaling but does not exceed 20 mph.
- **Class 3:** Motor provides assistance only when the rider is pedaling and ceases when the bike reaches 28 mph. Must be 16 years of age or older to operate.

City Ordinance:

In Wausau, e-bikes are allowed on designated bike lanes and shared-use paths, following the same rules as traditional bicycles. Riders must yield to pedestrians and give an audible signal before overtaking them.

Where You Can Ride:

- **Class 1, 2 and 3:** Permitted on bicycle paths, bike lanes, and roads where bicycles are allowed. Not permitted on sidewalks unless allowed by ordinance (look for signs).

Motor Bicycles

State Law:

Wisconsin law classifies motor bicycles as bicycles with an added power unit (gas) that permits the vehicle to travel at a speed of not more than 30 mph with a 150 pound rider on a dry, level, hard surface.

- An operator must have a valid drivers license.

Where You Can Ride:

Permitted on roads and in designated bike lanes and must follow the same rules as motor vehicles. Not permitted on sidewalks.

Electric Scooters

State Law:

Electric scooters are defined as devices with handlebars, an electric motor, and a maximum speed of 20 mph.

City Ordinance:

In Wausau, electric scooters must follow the same rules as e-bikes when on the road. Other rules include:

- Must be 8 years of age or older to operate on City roadways or sidewalks (where permitted). Those age 6 to 7 may ride during daylight hours if accompanied by an adult.

- Headphones/earbuds are prohibited while riding.
- Front light and rear reflector/light are required during hours of darkness.

Where You Can Ride:

Permitted on bicycle paths, bike lanes, and roads where bicycles are allowed. Not permitted on sidewalks unless allowed by ordinance (look for signs).

Electric One-Wheels

State Law:

Electric one-wheels, often referred to as self-balancing electric boards, are not specifically classified under Wisconsin law. However, they generally fall under the category of electric personal assistive mobility devices (EPAMDs), like Segways.

City Ordinance:

In Wausau, electric one-wheels are permitted on sidewalks and bike paths, but riders should give way to pedestrians and exercise caution, especially in crowded areas. Operating at a safe speed and being mindful of others is essential.

Where You Can Ride:

- Allowed on sidewalks and bike paths unless restricted by local ordinances.
- Riders should yield to pedestrians and operate at a reasonable speed.

General Safety Tips

- **Be Visible:** Equip your e-bike, scooter, or one-wheel with lights and reflectors, especially when riding at night.
- **Wear Protective Gear:** Helmets and protective clothing are recommended for all riders, regardless of the device.
- **Do not wear headphones or earbuds while riding.**
- **Respect Traffic Laws:** Follow all traffic signals, signs, and right-of-way rules as you would when driving a car or riding a traditional bicycle.

The Wausau Police Department encourages all riders to stay informed and exercise safety and courtesy when using electric mobility devices. By understanding and following the laws and ordinances, you can help make Wausau's roads and trails safer for everyone.



Emergency Management

Personal Preparedness

Kelly Bremer, Emergency Management Coordinator

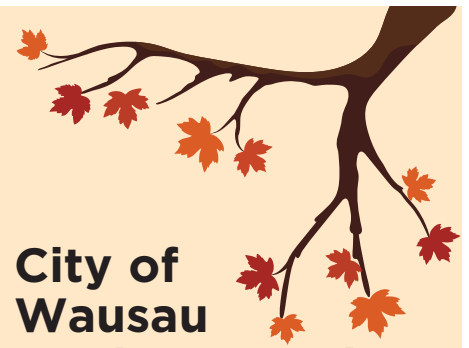
No matter the season, each of us must do what we can to ensure that we, along with our families, are prepared for any disaster. There are many things you can do to begin preparation.

- ✓ Know what kind of disasters are most common in your area.
- ✓ Create an emergency communications plan to record important contact information and medical information about your family. This should be stored both digitally and on paper. (Visit [ready.gov](https://www.ready.gov) for a free template)
- ✓ Make sure essential phone numbers are stored somewhere besides just on your cell phone.
- ✓ Sign up for emergency alerts in your area. One free source you can utilize through Marathon County is Everbridge. (Sign up at <https://member.everbridge.net/453003085617885/new>)
- ✓ Build an emergency supply kit over time. You can start this with items you may already own, such as flashlights with extra batteries, copies of important documents, water, and non-perishable food. Each time you go to the grocery store, you can pick up an extra item you use regularly to help stock your kit. Other items may include a first aid kit, whistle (to signal help), dust masks (to help filter contaminated air), moist towelettes, and manual can opener. (A full list is available at [ready.gov](https://www.ready.gov))
- ✓ Talk with family or members of your household about where you will go if told to evacuate your home. Having this plan in place ahead of time will save time and money.
- ✓ Store important documents such as passports and birth certificates in a food-safe place like a high shelf or upper floor in resealable, water-tight plastic bags.
- ✓ Ensure you have properly working smoke and carbon monoxide detectors in your house (change the batteries twice a year).
- ✓ Take a CPR/First Aid course.

As you prepare your plan, ensure you tailor it to your family's specific daily living needs. Some factors to consider when developing your plan include:

- ✓ Different ages within the household.
- ✓ Dietary needs.
- ✓ Medical needs, including prescriptions and equipment.
- ✓ Disabilities or access and functional needs.
- ✓ Cultural and religious considerations.
- ✓ Pets or service animals within the household.

For more information or tips, please visit [ready.gov](https://www.ready.gov) or [readywisconsin.wi.gov](https://www.readywisconsin.wi.gov).



City of Wausau Yard Waste Site

The City of Wausau Yard Waste Site is located at the east end of East Chellis Street.

EXTENDED HOURS FOR FALL **2024 HOURS OF OPERATION**

The Yard Waste Site will be open the following hours:

September 30th-November 3rd

Monday	9 a.m. to 5 p.m.
Tuesday	9 a.m. to 5 p.m.
Wednesday	9 a.m. to 8 p.m.
Thursday	CLOSED
Friday	9 a.m. to 5 p.m.
Saturday	9 a.m. to 5 p.m.
Sunday	9 a.m. to 5 p.m.

November 3rd-November 24th

Due to daylight savings time

Monday	9 a.m. to 5 p.m.
Tuesday	9 a.m. to 5 p.m.
Wednesday	9 a.m. to 5 p.m.
Thursday	CLOSED
Friday	9 a.m. to 5 p.m.
Saturday	9 a.m. to 5 p.m.

The site will be locked and gated during non-operating hours.

The site is monitored by video surveillance.

Citations will be issued to parties who leave yard waste outside the gate of the facility.

MATERIALS ACCEPTED:

Garden & flower debris, Grass, Leaves, Tree branches/brush

The site is for City of Wausau residents only. The City of Wausau appreciates your cooperation.

If you have any questions, call the Department of Public Works at 715-261-6960.

Office hours are Monday thru Friday 7:00 a.m. - 3:00 p.m.

What is Affordable Housing?

Lately this has been a hot topic of discussion. The easy answer is this: HUD (Department of Housing and Urban Development) defines it as housing on which the occupant is paying no more than 30 percent of their gross income, including utilities. Many lenders use this percentage when calculating how much of a mortgage loan a borrower can afford to borrow. This percentage is just for housing and utilities. Then the occupant has 70% left for other monthly obligations – such as cell phone, auto loan payment, credit card payments, food, clothing, childcare, miscellaneous expenses.



For example, you live by yourself. At your job you make \$15 an hour and work 40 hours a week. Calculating that out $15 \times 40 = 600$ a week $\times 52$ (weeks in a year) = \$31,200 gross income. Divide that by 12 = \$2,600 a month. Now take that 30% and that gives you \$780 per month that should be paid towards housing. Sounds impossible in this day and age. Many people are paying 50% or more towards their housing and that is why many single people are finding roommates to help with their housing situation.

This is a reason why the City of Wausau has been partnering with different developers on Tax Credit Housing projects. These apartment complexes have

different units to fit each income type. Yes, they are called affordable housing units. Some say they are still not affordable; some say that affordable housing units rent to a bad element. We find that both are mostly not true. As mentioned above, “affordable” calculates out different amounts to different people. It is all based on their income. And just because someone can’t afford today’s rents, doesn’t mean they are not good people.

Based on the above conversation, Wausau is starting up a YIMBY chapter. Many have heard the term NIMBY – Not in My Back Yard. Wausau wants to be a YIMBY community – YES in my Back Yard. Affordable housing is needed in every community and in every neighborhood. A good balanced neighborhood has both homeowners and renters. Almost all of us started out as renters. Some of us are current renters. We all care about our community and we should all care about our neighbors. If you want more information or want to join the conversation, please reach out to Shelter For All - Wausau, email: shelter4allwausauwi@gmail.com

City Hall gets a pollinator garden as a student project takes shape

By Jean Abreu, Sustainability Committee Member

Natalie Doering, a senior at Wausau East High School and an International Baccalaureate (IB) Diploma Candidate, needed a capstone project to fulfill her IB Diploma requirements. This capstone is called a **CAS** project because it needs to include aspects of **C**reativity, **A**ctivity, and **S**ervice. Having an interest in the environment, Natalie found her way to the City’s SEEC Committee (Sustainability, Energy and Environment Committee) where she learned that one of the Committee goals included the promotion of pollinator gardens. This inspired Natalie; she wanted to design and implement the planting of two pollinator gardens at City Hall.

Working with City Forester John Kahon and Horticulturist Jacki Berens, Natalie applied for and received approval for the project. She proceeded to design the gardens, gather the perennial native plants, implement the planting and has been involved in their maintenance throughout summer. The gardens are located on the south side of city hall near the fountain.

Natalie’s goal was to create something that would have a positive and lasting impact on both the community and the natural world. Clearly her

project has accomplished just that. Not only did she create two beautiful gardens, but Natalie learned how to seek out and work with others in the community in an effort to make her project a reality. “Knowing there will always be pollinator gardens downtown for pollinating insects to visit year after year is very rewarding,” Natalie said. How wonderful for the City of Wausau to be the recipient of Natalie’s energy and hard work creating something we can all enjoy for years to come.



Wausau Water Works



Schedule of Rates EFFECTIVE JULY 1, 2023

WAUSAU WATER WORKS

407 Grant Street
City Hall, Wausau, WI 54403-4783
Phone: 715 261-6530 • Fax: 715 261-6535
E-mail: waterworks@ci.wausau.wi.us

Office Hours: Monday-Friday
8:00 a.m. – 4:30 p.m.

WATER RATES EFFECTIVE JULY 1, 2023

Quarterly Service Charge

(based on meter size)

5/8 Inch Meter	\$25.65
3/4 Inch Meter	25.65
1 Inch Meter	42.00
1-1/4 Inch Meter	57.00
1-1/2 Inch Meter	72.00
2 Inch Meter	111.00
3 Inch Meter	180.00
4 Inch Meter	270.00
6 Inch Meter	480.00
8 Inch Meter	726.00
10 Inch Meter	1,050.00
12 Inch Meter	1,380.00

Plus Volume Charge:

Residential Customers -

All water used - \$5.58 per 100 cu. ft.

Non-Residential Customers -

First 6,000 cu. ft. . . . \$5.58 per 100 cu. ft.
Next 54,000 cu. ft. used
\$5.39 per 100 cu. ft.
Over 60,000 cu. ft. used
\$4.54 per 100 cu. ft.

Irrigation Class -

All water used - \$8.46 per 100 cu. ft.

Bills for water and sewer service are issued quarterly and due the 20th of the month. A 1% late payment charge is added to the outstanding balance after the 20th of each month and is applicable to all customers. To avoid late payment charges, all bills must be received in the **office of the City Treasurer** by the due date printed on the front of the bill. Customers who pay at remote collection sites (grocery stores) are recommended to make payments prior to due dates to ensure timely receipt by the City Treasurer.

PUBLIC FIRE PROTECTION FEES EFFECTIVE JULY 1, 2023

Quarterly Service Charge

(based on meter size)

5/8 Inch Meter	\$19.62
3/4 Inch Meter	19.62
1 Inch Meter	48.00
1-1/4 Inch Meter	69.00
1-1/2 Inch Meter	93.00
2 Inch Meter	150.00
3 Inch Meter	282.00
4 Inch Meter	465.00
6 Inch Meter	930.00
8 Inch Meter	1,482.00
10 Inch Meter	2,223.00
12 Inch Meter	2,961.00

SEWER RATES EFFECTIVE APRIL 1, 2023

Quarterly Service Charge

(based on water meter size)

5/8 Inch Meter	\$36.31
3/4 Inch Meter	36.31
1 Inch Meter	49.01
1-1/4 Inch Meter	68.26
1-1/2 Inch Meter	79.15
2 Inch Meter	132.52
3 Inch Meter	239.27
4 Inch Meter	390.67
6 Inch Meter	771.18
8 Inch Meter	1,213.05

Plus Volume Charge

All volume, as recorded by the water meter each quarter shall be charged at the rate of \$5.91 per 100 cubic ft.

All customers are billed for sewer based on the amount of water used each quarter. Unmetered sewer rate is \$154.51 per quarter in the City and \$162.91 per quarter outside the City.

PRIVATE FIRE PROTECTION CHARGES EFFECTIVE JULY 1, 2023

This service is for unmetered connections to the main for the purpose of supplying water to private fire protection systems such as automatic sprinkler systems, standpipes, (where same are connected permanently or continuously to the mains) and private hydrants.

2 Inch or Smaller Connection	\$ 27.45
3 Inch Connection	52.50
4 Inch Connection	87.00
6 Inch Connection	174.00
8 Inch Connection	270.00
10 Inch Connection	417.00
12 Inch Connection	558.00
14 Inch Connection	696.00
16 Inch Connection	834.00

CHARGES FOR TURNING ON SERVICE

Turn on valve at curb

(includes meter installation if needed)

During Normal Business Hours. . . . \$65.00
After Hours. 100.00

LATERAL CONNECTIONS

1" Water Lateral Connection
Based on Time and Materials
1-1/2" or Larger Water Lateral
Based on Time and Materials

MISSED APPOINTMENT FEES

During Normal Business Hours. . . . \$60.00
After Hours. 100.00

MISCELLANEOUS

Payments Not Honored
by Financial Institution. \$45.00

Wausau Water Works to Issue Delinquent Notices

Notices for delinquent water and sewer bills will be issued in early October to property owners and tenants. These bills are due by November 1, 2024, to avoid an additional 10% penalty. If not paid by November 15, 2024, the total owing, including the 10% penalty, will be added to the property taxes.

These charges may also show up in the Circuit Court Access Program (CCAP) program under the tenant's name. This could have a bearing for tenants who are looking at renting other properties and have delinquent water and sewer bills as potential landlords would be able to see that information.

Should you have any questions regarding any outstanding balances, please contact Wausau Water Works at 715-261-6530.

Residential Cross Connection Survey

As part of a continued effort to provide safe water, Wausau Water Works performs a Cross Connection Survey at each residence within the city. These are completed during the same appointment as a water meter replacement. These inspections not only protect against hazardous connections to the water supply but are required by the EPA and DNR.

These residential surveys will consist of an inspection of the basement plumbing, as well as any plumbing located outside the home. Some of the things we will be looking at are the drains on water softeners, hose bibs, laundry tubs, boilers, toilets and other connection points including irrigation systems. This assures compliance with state cross connection plumbing code.

The most common residential non-complying plumbing fixtures are hose bibs not having back flow prevention. A simple installation of a hose bib vacuum breaker can often fix this issue.

Property owners will be responsible for any repairs or alterations to their plumbing that will be necessary to meet code compliance. If violations are found during the inspection repairs will need to be made within 30 days and a follow-up re-inspection scheduled with the utility.

The cross connection control program was set up to protect the public water supply system from potential backflow hazards which could allow "dirty" or unsafe water to get into the public water supply. Wausau Water Works would like to thank you for your participation in this program, helping us to provide safe water and meet federal and state requirements.

What is a Cross-Connection?

A cross-connection is an actual or potential connection between the safe drinking water (potable) supply and a source of contamination or pollution. State plumbing codes require approved backflow prevention methods to be installed at every point of potable water connection and use. Cross-Connections must be properly protected or eliminated.

How does contamination occur?

When you turn on your faucet, you expect the water to be as safe as when it left the treatment plant. However, certain hydraulic conditions left unprotected within your plumbing system may allow hazardous substances to contaminate your own drinking water or even the public water supply.

Water normally flows in one direction. However, under certain conditions, water can actually flow backwards; this is known as Backflow. There are two situations that can cause water to flow backward: back siphonage and backpressure.

Backsiphonage

May occur due to a loss of pressure in the municipal water system during a fire fighting emergency, a water main break or system repair. This creates a siphon in your plumbing system which can draw water out of a sink or bucket and back into your water or the public water system.

Backpressure

May be created when a source of pressure (such as a boiler) creates a pressure greater than the pressure supplied from the public water system. This may cause contaminated water to be pushed into your plumbing system through an unprotected cross-connection.

Insights to protect your drinking water

Do...

- Keep the ends of hoses clear of all possible contaminants.
- Make sure dishwashers are installed with a proper "air gap" device.
- Verify and install a simple hose bibb vacuum breaker on all threaded faucets around your home.
- Make sure water treatment devices such as water softeners have the proper "air gap", which is a minimum of one inch above any drain.

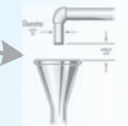
Hose bibb Vacuum Breaker



Don't...

- Submerge hoses in buckets, pools, tubs, sinks or ponds.
- Use spray attachments without a backflow prevention device.
- Connect waste pipes from water softeners or other treatment systems directly to the sewer or submerged drain pipe. Always be sure there is a one inch "air gap" separation.

Air Gap



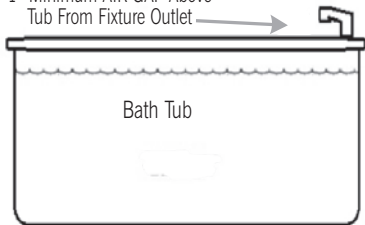
In the Bathroom - Hand Held Shower Fixture

The hand held shower fixture is compliant if:

- When shower head is hanging freely, it is at least 1" above top of the flood level rim of the receptor (tub)
- Complies with **ASSE#1014**
- Has the **ASME code 112.18.1** stamped on the handle



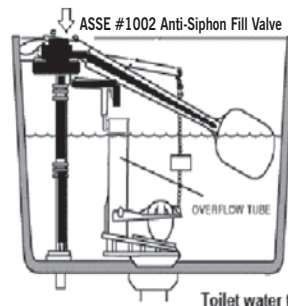
1" Minimum AIR GAP Above Tub From Fixture Outlet



In the Bathroom - Toilet Tanks

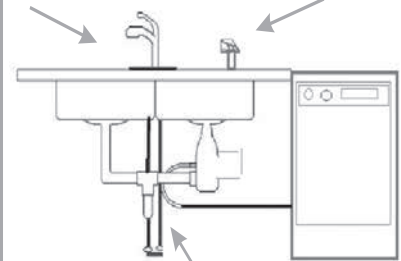
There are many unapproved toilet tank fill valve products sold at common retailers which do not meet the state plumbing code requirements for backflow prevention.

- Look for the **ASSE #1002** Standard symbol on the device and packaging.
- Replace any unapproved devices with an **ASSE #1002** approved anti-siphon fill valve device. Average cost is typically \$12 to \$22 at home improvement stores.
- Verify overflow tube is one inch below critical level (CL) marking on the device.



Toilet water tank

In the Kitchen



Hoses and water treatment devices may create a potential backflow hazard if not properly isolated with backflow prevention methods.

WI-KBRCCC-2015-03 © 2015 HydroCorp

28th Avenue Street Closure and Project

Background:

The County was going to extend County Road R from Sherman Street to County Road U utilizing Maple Creek Drive and 30th Avenue. The City was waiting for this project to be completed before doing any project on 28th Avenue between Mary Ann Lane and Maple Creek Drive. This County project was canceled, so the City started putting together alternative options.

Currently:

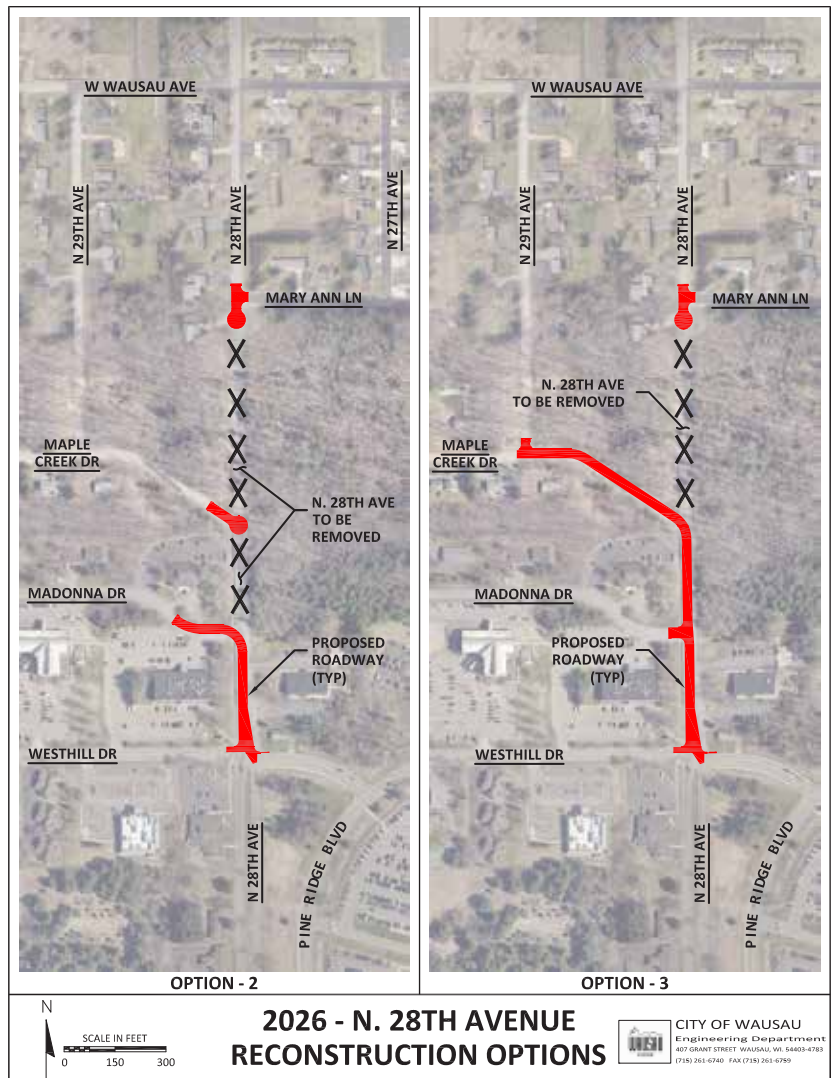
The road is scheduled to be reconstructed or rerouted in 2026. This Spring, during a rainstorm, 28th Avenue between Mary Ann Lane and Maple Creek Drive washed out. This forced the city to close this section of the road. The discussion of what to do with 28th Avenue was already taking place at Infrastructure and Facilities. Due to the high cost of reopening the road for one to two years, we decided to keep 28th Avenue closed.

We're considering multiple options to address the situation.

- #1: Reconstruct 28th Avenue following its existing path.
- #2: Permanently close the section of 28th Avenue between Mary Ann Lane and Madonna Drive, with culs-de-sac at the top of 28th Avenue and the end of Maple Creek Drive.
- #3: Permanently close the section of 28th Avenue between Mary Ann Lane and Maple Creek Drive.

Next Steps:

If you are looking to be a part of the project discussion, there will be several opportunities. Members of the public are welcome to attend Infrastructure and Facilities Committee meetings, the second Thursday of every month at 5:15pm at City Hall. The Werle Park neighborhood meeting will use their December 9th meeting to discuss this project: 6pm in the Grace United Church basement on Third Avenue.



Parks Department

Holiday Trees Needed

The Wausau/Marathon County Park Department is looking for four (4) evergreen trees to be donated for the Holiday Season. The trees must be accessible by our trucks and be of acceptable shape, size, and form.

The trees, preferably balsam fir or spruce, will be installed at the 400 Block, City Hall, Courthouse, and the intersection of Stewart Avenue and 1st Avenue for the Holiday Season.

Anyone interested in donating a tree for these locations is encouraged to contact the Parks Department at (715) 261-1550 or parkforestry@co.marathon.wi.us



Halloween Safety Tips

Everyone loves a good scare on Halloween, but not when it comes to child safety. There are several easy and effective behaviors that parents can share with kids to help reduce their risk of injury. On average, children are more than twice as likely to be hit by a car and killed on Halloween than on any other day of the year.

- Cross the street at corners, using traffic signals and crosswalks.
- Look left, right and left again when crossing and keep looking as you cross.
- Put electronic devices down and keep heads up and walk, don't run, across the street.
- Teach children to make eye contact with drivers before crossing in front of them.
- Always walk on sidewalks or paths. If there are no sidewalks, walk facing traffic as far to the left as possible. Children should walk on direct routes with the fewest street crossings.
- Watch for cars that are turning or backing up. Teach children to never dart out into the street or cross between parked cars. Trick or Treat With an Adult.
- Children under the age of 12 should not be alone at night without adult supervision. If kids are mature enough to be out without supervision, remind them to stick to familiar areas that are well lit and trick-or-treat in groups. Keep Costumes Both Creative and Safe.
- Decorate costumes and bags with reflective tape or stickers and, if possible, choose light colors.
- Choose face paint and makeup whenever possible instead of masks, which can obstruct a child's vision.
- Have kids carry glow sticks or flashlights to help them see and be seen by drivers.
- When selecting a costume, make sure it is the right size to prevent trips and falls.
- Eliminate any distractions inside your car so you can concentrate on the road and your surroundings.
- Slow down and be especially alert in residential neighborhoods. Children are excited on Halloween and may move in unpredictable ways.
- Take extra time to look for kids at intersections, on medians and on curbs. Enter and exit driveways and alleys slowly and carefully.
- Drive slowly, anticipate heavy pedestrian traffic and turn your headlights on earlier in the day to spot children from greater distances.
- Wausau trick-or-treating hours are 4 p.m. to 7 p.m. so be especially alert for kids during those hours.



For more information visit safekids.org.



Thanksgiving Safety

The kitchen is the heart of the home, especially at Thanksgiving. Kids love to be involved in holiday preparations. Safety in the kitchen is important, especially on Thanksgiving Day when there is a lot of activity and people at home.

- Stay in the kitchen when you are cooking on the stove top so you can keep an eye on the food.
- Stay in the home when cooking your turkey and check on it frequently.
- Keep children away from the stove. The stove will be hot and kids should stay 3 feet away.
- Make sure kids stay away from hot food and liquids. The steam or splash from vegetables, gravy or coffee could cause serious burns.
- Keep the floor clear so you don't trip over kids, toys, pocketbooks or bags.
- Keep knives out of the reach of children.
- Keep matches and utility lighters out of the reach of children - up high in a locked cabinet.
- Be sure electric cords from an electric knife, coffee maker, plate warmer or mixer are not dangling off the counter within easy reach of a child.
- Never leave children alone in room with a lit candle.
- Make sure your smoke alarms are working. Test them by pushing the test button.

Did you know?



Thanksgiving is the leading day of the year for home fires involving cooking equipment.



CITY OF WAUSAU

407 Grant Street
Wausau, WI 54403

Mayor

Doug Diny
407 Grant St
715-261-6630
doug.diny@wausauwi.gov



City Council Representatives

All mail for Alderpersons
can be sent to:
City Hall
407 Grant Street
Wausau, WI 54403

District 1

Carol Lukens
715-261-6831
carol.lukens@ci.wausau.wi.us



District 2

Michael Martens
michael.martens@ci.wausau.wi.us



District 3

Terry Kilian
terry.kilian@ci.wausau.wi.us



District 4

Tom Neal
tom.neal2@ci.wausau.wi.us



District 5

Gary Gisselman
715-848-5160
gary.gisselman3@ci.wausau.wi.us



District 6

Rebecca McElhaney
715-261-6830
becky.mcelhaney@ci.wausau.wi.us



District 7

Lisa Rasmussen
715-261-6832
lisa.rasmussen2@ci.wausau.wi.us



District 8

Sarah Watson
sarah.watson@ci.wausau.wi.us



District 9

Victoria Tierney
715-261-6834
victoria.tierney@ci.wausau.wi.us



District 10

Louis Larson
715-261-6840
lou.larson@ci.wausau.wi.us



District 11

Chad Henke
715-261-6841
chad.henke@ci.wausau.wi.us



**Trick or
Treating for
Wausau will
be October 31st
from 4:00-7:00 pm**

Wausau Events



FALL EVENT SCHEDULE:

HARVEST FEST

OCTOBER 5 - 400 BLOCK



HOLIDAY PARADE

DECEMBER 6 - WAUSAU



FOR MORE INFORMATION ON THESE EVENTS, PLEASE VISIT:

WWW.WAUSAUEVENTS.ORG