



WAUSAU WATERWORKS

FOR YOU!

inside this issue

Thank You Water Department Crews!

Water Meter Exchanges

Call Diggers Hotline Before You Dig

Private Wells

Bull Falls Tappers Qualify for Nationals

Spring Watermain Flushing Schedule

Schedule of Rates

Thank You Water Department Crews!

When the cold weather set in earlier this year the employees of the water utility sprang into action. At times the crews worked around the clock to keep customers water flowing.

In the first six weeks of 2019, utility crews responded to eight water main breaks and eleven service leaks. The coldest 2 weeks of January brought crews over fifty, no water calls. As a result, we have asked many residents to run the water to prevent more services from freezing.

Please remember just because the temperatures are warming up outside it is still cold underground. We are monitoring the temperatures of the distribution system to determine when we feel it is safe to shut them off. We will make contact by hanging a tag on the residence or a letter in the mail.



Crews enjoying the warm temperature of 30 F while fixing a water main break on Mount View Blvd.



Water Meter Exchanges

The Public Service Commission of Wisconsin, which regulates all Wisconsin water utilities, requires that all water meters be tested periodically. Residential and small commercial meters are to be exchanged and tested once every ten (10) years. This testing ensures that your water usage is correct and represents a fair billing.

You will receive a post card in the mail from Wausau Water Works when it is time to change your water meter with instructions on how to schedule an appointment.

Generally, the meter exchange can be completed within a half hour. Please note that our meter technicians will need to turn off your water to exchange the meter, so it is important that everyone in your family is aware of this temporary outage.

Water meters are generally located in the basement of your home or business. Please keep the area around your meter clear for easy access.

Call Diggers Hotline Before You Dig

Construction projects such as installing decks, fences and tree planting are another sign of spring. Homeowners are reminded to contact Diggers Hotline before you dig by simply dialing 811 from any land line or cell phone. Or, you can place an online request at www.diggershotline.com.

Homeowners are also reminded that they must allow 3 business days (not including the day the request is called in) for all their utilities to be located before they dig, and should plan their projects accordingly. There is no cost to the homeowner to contact Diggers Hotline, who will then

inform all utilities with buried facilities, such as water, sewer, gas and electric utilities, telephone and cable companies of your intentions to dig in a specific area.

Water lines are marked in the street and up to the curb stop (shut off valve) which is typically located in the boulevard area. Water pipes beyond that point and into the house were installed privately and the utility does not have any record of where they are located.



**Know what's below.
Call before you dig.**

Private Wells

Private water wells in the City of Wausau are required to be inspected, pass a bacteriological water test (to ensure that there is no coliform or e-coli bacteria present), and be permitted. Permits are good for a period of five years. Wells that are not operable or not up to code will be required to be repaired or abandoned. Wausau Water Works will be sending letters shortly to property owners who have a permit that will be expiring, or has an expired permit. As a private well is a source of cross contamination of our public water system, failure to obtain a permit or to abandon a faulty well could result in disconnection of your water service and/or fines. We will also be sending letters to property owners in areas where wells were known to exist at one time to verify if a well exists on the property.

The Wisconsin DNR offers income dependent grants which could help cover the cost of abandonment. Wausau Water Works also offers a deferment plan to assist in the cost of well abandonment. If you have a private well or would like more information on well abandonment or the grant or deferment programs please contact our office at 715-261-7265. Home owners are responsible for the inspection and sampling costs. Current cost for a 5 year well permit is \$100.00.



Annual Hydrant Flushing to Begin May 14

Water utility employees will begin flushing fire hydrants at 7:00 a.m. on Monday morning, May 6, 2019, as part of our annual maintenance program. Wausau Water Works anticipates the flushing to last about two weeks depending on emergencies or weather related delays. Flushing accomplishes two tasks; first, it cleans the mains of mineral buildup, and secondly, it ensures that all hydrants are in good operating order.

Flushing will be performed during the daytime hours from 7:00 a.m. until about 3:00 p.m. during which time over 1,700 hydrants will be flushed. This process takes about two weeks to complete. All flushing is performed during daylight hours to improve safety for our employees as well as being able to ensure that hydrants are being adequately flushed.

Residents are urged to avoid water use when the flushing occurs near their neighborhood, especially for laundry purposes, as it may stain clothing. Water softeners should also be bypassed during this time. Some homeowners may experience very low pressure during the flushing process. As flushing occurs in your neighborhood, businesses and homes may experience dirty water for a short period of time.

Residents are also cautioned about driving in the area where the flushing is occurring. Water from hydrants is under extreme pressure, with approximately 1,000 gallons per minute being discharged. Although our employees use caution, damage to your vehicle can result if you drive through an area where hydrants are being flushed.

We will have updates on our progress on the City of Wausau Department of Public Works Facebook page. However, we are not providing exact dates for each zone. In the past, we have had to wait to start a zone due to published dates. This way the Water Works Department can work more efficient starting with Zone 1 and working through the Zones numerically.



Bull Falls Tappers Qualify For Nationals

Wausau's Bull Falls Tappers finished the tapping competition at the Wisconsin Water Association Distribution Seminar in 1st place defeating reigning champions Madison's Mad City Tappers, with a winning time of 1:32.

Each team completes two taps in an exciting contest, which pits skills and muscles against the clock. The object of the competition is to tap a section of pressurized water main, attach a copper water service line, and then turn on the service see if there are any leaks. Judges analyze the work, penalizing for any infractions.

Winners of the competition go on to compete internationally at the American Water Works Association Annual Conference in Denver Colorado this June. The competition helps the teams hone their tapping skills, while also providing networking opportunities with peers from around the country.

Members of the 2019 team included Cranker Floyd Smith Jr., Captain Brandon Ball, Copper Man Rick Dorn, and Star Man Ryan Fischer.

Spring Hydrant Flushing Schedule

Avoid water use during the scheduled flush, especially for laundry purposes. It is particularly important to **NOT** use bleach in your laundry as it may stain your clothing. It is also suggested that you bypass water softeners during this time. Please also be aware that some homeowners may experience very low pressure during the flushing process.

Wausau Water Works anticipates the flushing to last about two weeks depending on emergencies or weather related delays. The progress may lead to flushing more than one zone per day. **To work more efficiently the Water Works Department will start in Zone 1 on May 6 and work their way up numerically. No exact dates are given out for each zone.**

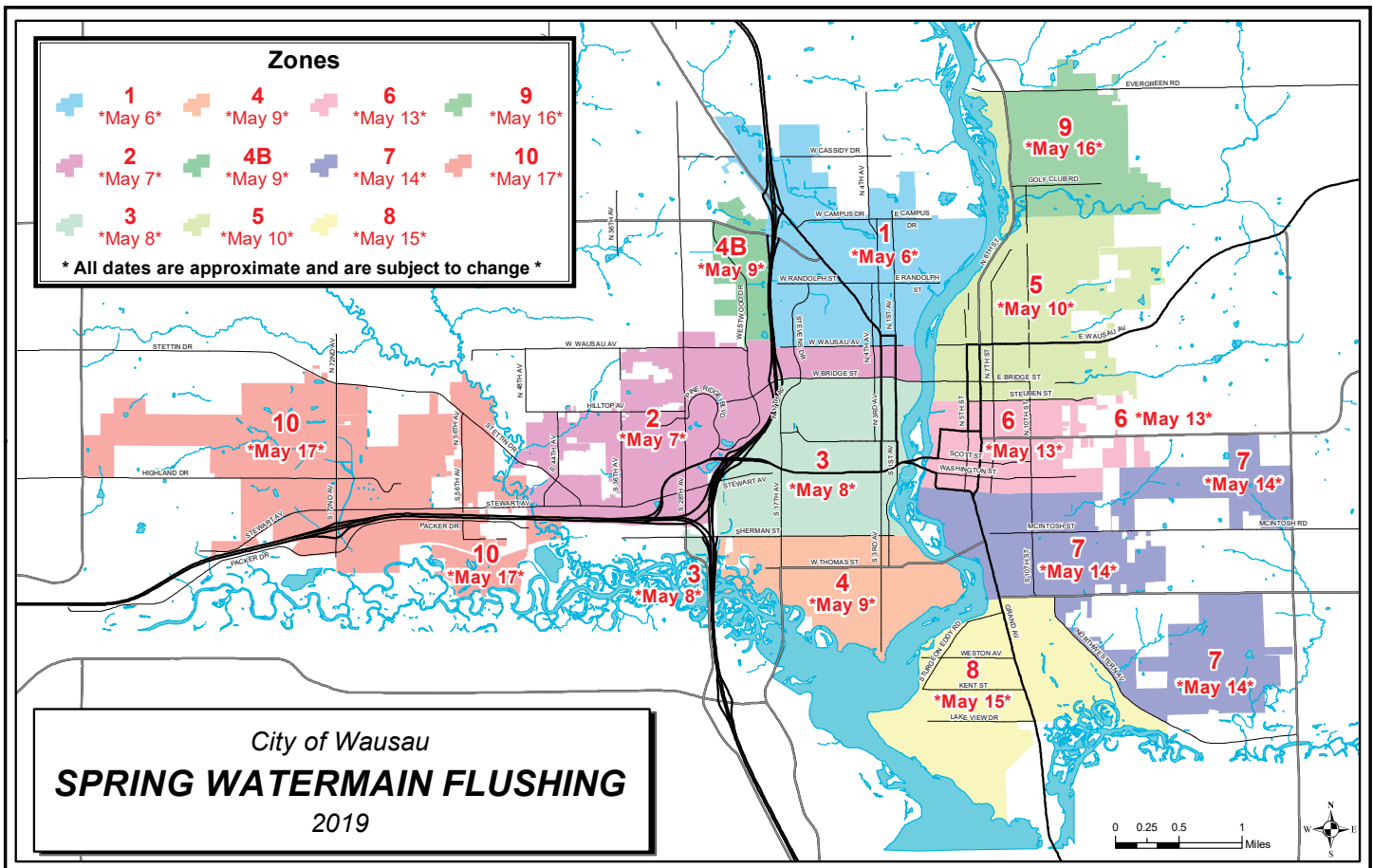
FLUSHING SCHEDULE

West Side

- Zone 1** - West Wausau Avenue north to City limits
- Zone 2** - Wausau Avenue south to Bridge Street and Pinecrest area to Stettin Drive, west to 48th Avenue and north to Hilltop Avenue.
- Zone 3** - Bridge Street south to Sherman Street
- Zone 4** - Rosecrans Street south to City limits
- Zone 4B** - high pressure zone by 28th Avenue Reservoir, Highway U

East Side

- Zone 5** - Steuben Street north to Sylvan Street; 6th Street to City limits (Evergreen Road), Riverview Court and Riverview Drive
 - Zone 6** - Hamilton Street south to Forest Street
 - Zone 7** - Kickbusch Street south to Town Line Road and Northwestern Avenue
 - Zone 8** - Town Line Road south to City limits
- ### Other Areas
- Zone 9** - Riverview area
 - Zone 10** - 56th Avenue west to City limits





407 Grant Street - City Hall, Wausau, WI 54403-4783
 Phone: 715 261-6530 • Fax: 715 261-6535

Schedule of Rates

E-mail: waterworks@ci.wausau.wi.us
 Office Hours: Monday-Friday 8:00 a.m. - 4:30 p.m.

Water Rates - Effective August 1, 2018

Quarterly Service Charge (based on meter size)

5/8 Inch Meter	\$16.56
3/4 Inch Meter	16.56
1 Inch Meter	27.06
1-1/4 Inch Meter	39.45
1-1/2 Inch Meter	47.73
2 Inch Meter	70.02
3 Inch Meter	125.73
4 Inch Meter	181.41
6 Inch Meter	337.38
8 Inch Meter	515.61
10 Inch Meter	754.29
12 Inch Meter	993.00

Plus Volume Charge:

Residential Customers - All water used - \$2.22 per 100 cu. ft.

Non-Residential Customers

- First 6,000 cu. ft. \$2.22 per 100 cu. ft.
- Next 54,000 cu. ft. used - \$2.07 per 100 cu. ft.
- Over 60,000 cu. ft. used - \$1.75 per 100 cu. ft.

Irrigation Class - All water used - \$3.18 per 100 cu. ft.

Bills for water and sewer service are issued quarterly and due the 20th of the month. A 1% late payment charge is added to the outstanding balance after the 20th of each month and is applicable to all customers. To avoid late payment charges, all bills must be received in the office of the City Treasurer by the due date printed on the front of the bill. Customers who pay at remote collection sites (grocery stores) are recommended to make payments prior to due dates to ensure timely receipt by the City Treasurer.

Public Fire Protection Fees - Effective August 1, 2018

Quarterly Service Charge (based on meter size)

5/8 Inch Meter	\$10.17
3/4 Inch Meter	10.17
1 Inch Meter	25.41
1-1/4 Inch Meter	37.56
1-1/2 Inch Meter	50.79
2 Inch Meter	81.30
3 Inch Meter	152.76
4 Inch Meter	254.61
6 Inch Meter	509.22
8 Inch Meter	811.59
10 Inch Meter	1,218.96
12 Inch Meter	1,626.36

Sewer Rates - Effective February 1, 2019

Quarterly Service Charge (based on water meter size)

5/8 Inch Meter	\$20.40
3/4 Inch Meter	20.40
1 Inch Meter	27.60
1-1/4 Inch Meter	38.40
1-1/2 Inch Meter	44.40
2 Inch Meter	74.40
3 Inch Meter	134.40
4 Inch Meter	219.60
6 Inch Meter	433.20
8 Inch Meter	681.60

Plus Volume Charge

All volume, as recorded by the water meter each quarter shall be charged at the rate of \$3.11 per 100 cubic ft.

All customers are billed for sewer based on the amount of water used each quarter. Unmetered sewer rate is \$82.60 per quarter in the City and \$103.00 per quarter outside the City.

Private Fire Protection Charges - Effective April 1, 2015

This service is for unmetered connections to the main for the purpose of supplying water to private fire protection systems such as automatic sprinkler systems, standpipes, (where same are connected permanently or continuously to the mains) and private hydrants.

2 Inch or Smaller Connection	\$ 12.00
3 Inch Connection	22.50
4 Inch Connection	37.50
6 Inch Connection	75.00
8 Inch Connection	120.00
10 Inch Connection	180.00
12 Inch Connection	240.00

Charges For Turning On Service

Turn on valve at curb (includes meter installation if needed)	
During Normal Business Hours	\$60.00
After Hours	100.00

Lateral Connections

- 1" Water Lateral Connection . . . Based on Time and Materials
- 1-1/2" or Larger Water Lateral . . . Based on Time and Materials

Missed Appointment Fees

During Normal Business Hours	\$60.00
After Hours	100.00

Miscellaneous

Payments Not Honored by Financial Institution	\$40.00
---	---------