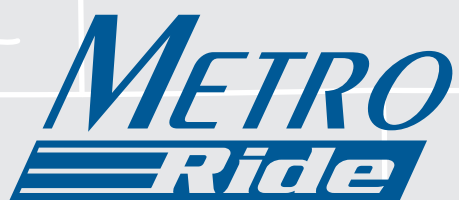


# Schedule for all Routes

## Monday-Friday

Each route departs from and arrives back at the Downtown Wausau Transit Center **1** every half-hour at :00 and :30 from 6:30am to 6:30pm. Routes are scheduled to be at the locations marked **2**, **3**, and **4** approximately at the times shown (may be slightly later, but should not be earlier). If your bus stop is between these points, use these times to gauge when the bus will arrive. Please arrive at your stop a few minutes early.

Location on map →	Transit Center <b>1</b>	<b>2</b>	<b>3</b>	<b>4</b>	Transit Center <b>1</b>
AM					
	7:00	6:37	6:45	6:52	7:00
	7:30	7:07	7:15	7:22	7:30
	8:00	8:07	8:15	8:22	8:30
	8:30	8:37	8:45	8:52	9:00
	9:00	9:07	9:15	9:22	9:30
	9:30	9:37	9:45	9:52	10:00
	10:00	10:07	10:15	10:22	10:30
	10:30	10:37	10:45	10:52	11:00
	11:00	11:07	11:15	11:22	11:30
	11:30	11:37	11:45	11:52	12:00
PM	12:00	12:07	12:15	12:22	12:30
	1:00	1:07	1:15	1:22	1:30
	1:30	1:37	1:45	1:52	2:00
	2:00	2:07	2:15	2:22	2:30
	2:30	2:37	2:45	2:52	3:00
	3:00	3:07	3:15	3:22	3:30
	3:30	3:37	3:45	3:52	4:00
	4:00	4:07	4:15	4:22	4:30
	4:30	4:37	4:45	4:52	5:00
	5:00	5:07	5:15	5:22	5:30
	5:30	5:37	5:45	5:52	6:00
	6:00	6:07	6:15	6:22	6:30



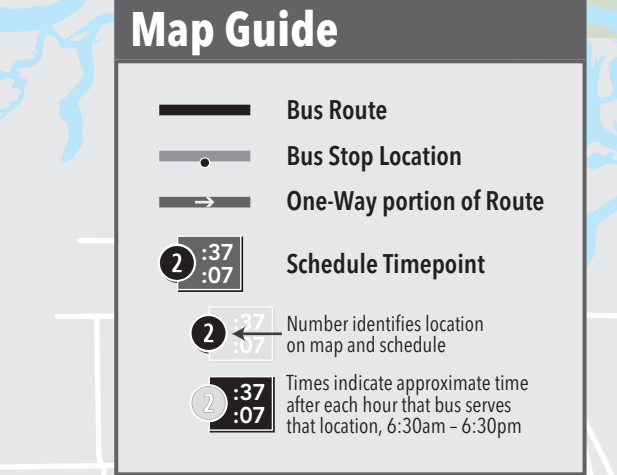
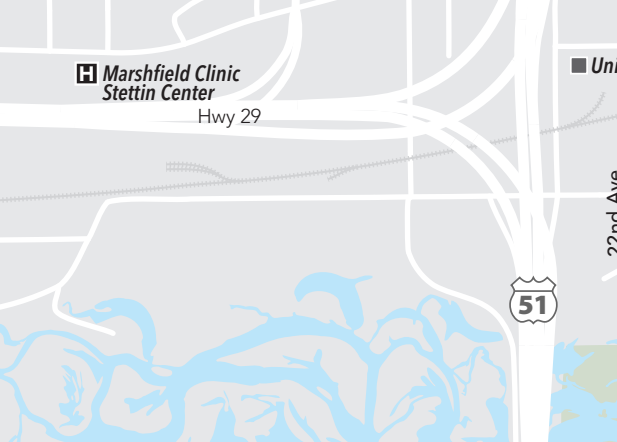
## Transit System Map

Effective July 1, 2021

## Detours and delays

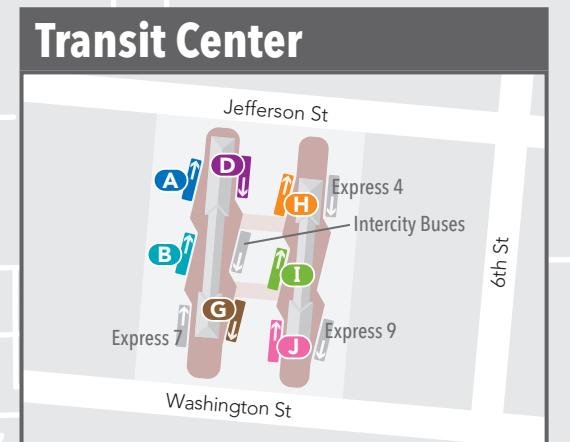
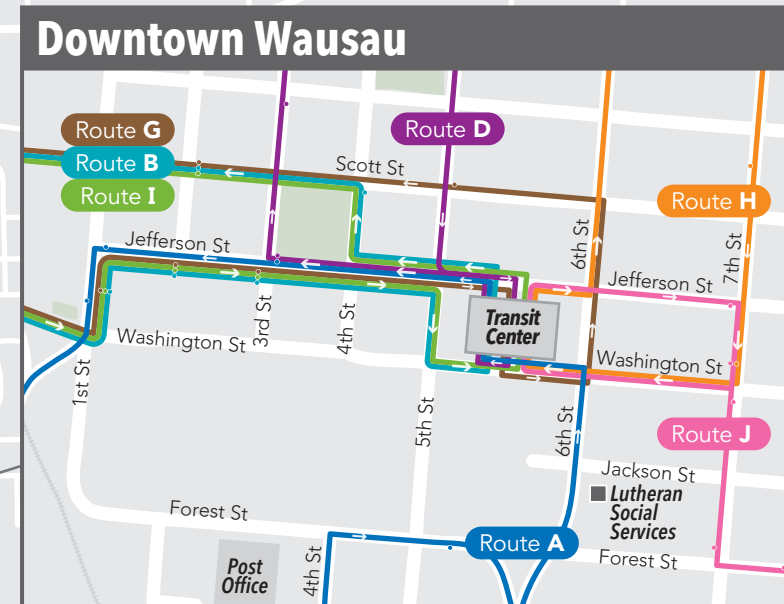
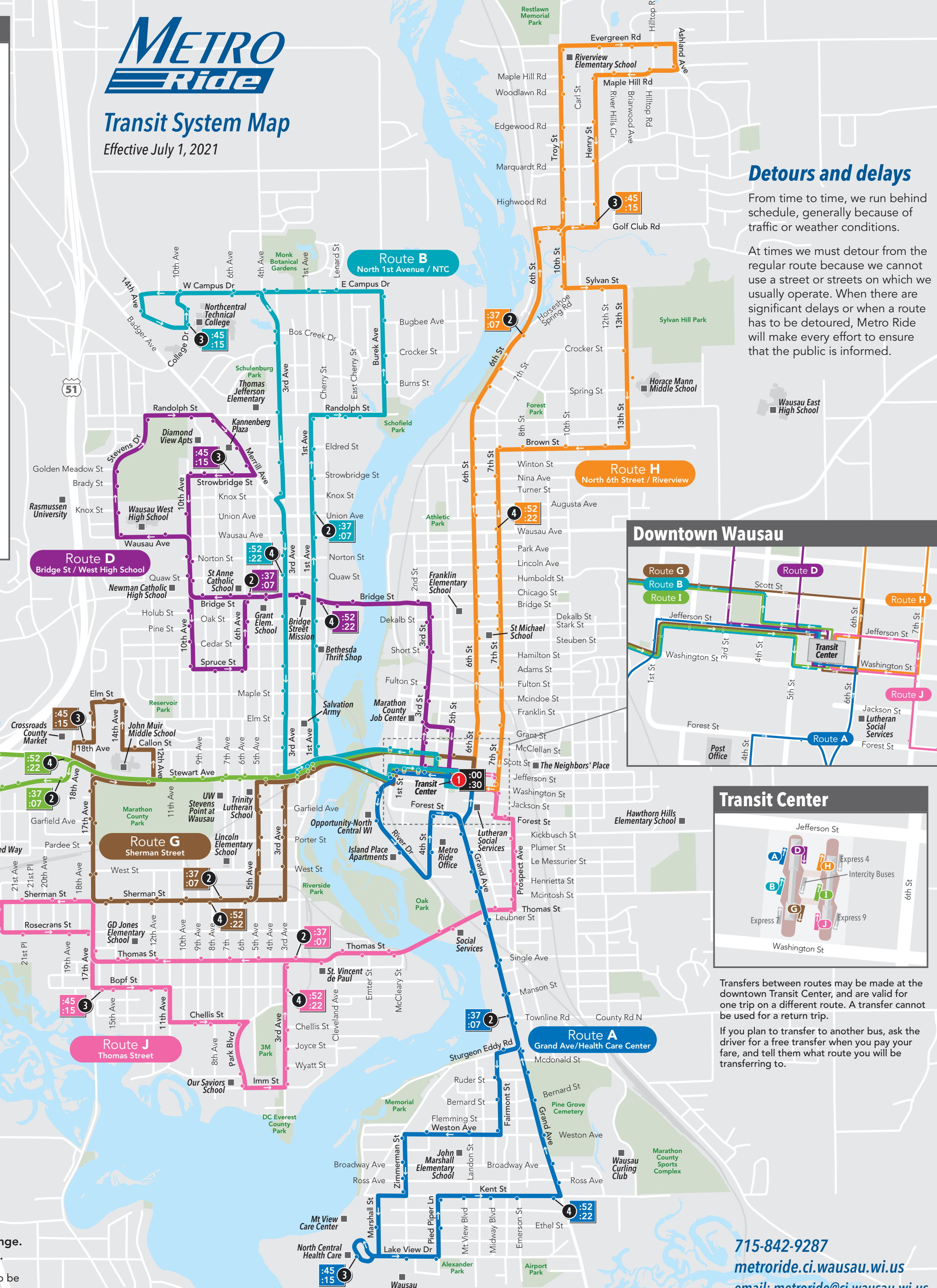
From time to time, we run behind schedule, generally because of traffic or weather conditions.

At times we must detour from the regular route because we cannot use a street or streets on which we usually operate. When there are significant delays or when a route has to be detoured, Metro Ride will make every effort to ensure that the public is informed.



Schedules, routes and fares subject to change. See [metroride.ci.wausau.wi.us](http://metroride.ci.wausau.wi.us) for updates.

Map for reference only. Information is believed to be accurate but accuracy is not guaranteed.



Transfers between routes may be made at the downtown Transit Center, and are valid for one trip on a different route. A transfer cannot be used for a return trip.

If you plan to transfer to another bus, ask the driver for a free transfer when you pay your fare, and tell them what route you will be transferring to.

715-842-9287  
[metroride.ci.wausau.wi.us](http://metroride.ci.wausau.wi.us)  
 email: [metroride@ci.wausau.wi.us](mailto:metroride@ci.wausau.wi.us)



# Transit System Map and Rider Guide

Effective July 1, 2021



**715-842-9287**  
[metroride.ci.wausau.wi.us](http://metroride.ci.wausau.wi.us)  
 email: [metroride@ci.wausau.wi.us](mailto:metroride@ci.wausau.wi.us)

## Fares & Passes

	Cash Fare	Monthly Pass
Adults	\$1.75	\$42
Seniors (65+) or Persons with Disabilities <small>With Medicare card or Reduced Fare Card issued by Metro Ride</small>	\$ .85	\$21
Students <small>Age 5 through senior high school</small>	\$1.50	\$21
Children <small>Under age 5, accompanied by an adult</small>	Free	
<i>Monthly passes are valid for unlimited rides during the calendar month shown on the pass.</i>		
Youth Freedom Pass <small>Age 5 through senior high school Valid for unlimited rides from Jun 1 to Aug 31</small>		\$28
10 Adult fare tokens <small>Each token valid for one Adult fare</small>		\$11
10 Student tickets <small>Each ticket valid for one Student fare</small>		\$9.50

### Where to buy passes, tickets and tokens:

	Student Tickets	Adult Tokens	Monthly Passes
Metro Ride Office	•	•	•
County Market		•	•
Wausau City Hall	•	•	•
North Central Health Care			•
Riverview Towers			•
Sturgeon Bluff Apartments			•
East High School	•		•
Horace Mann Middle School	•		•
NTC Bookstore			•
John Muir Middle School	•		•
West High School	•		•

## Welcome to Metro Ride

Public transportation has been part of the fabric of our community for many years, dating back to the first street cars in 1906. Much has changed over the years, but our objective – to provide safe, reliable, affordable, basic mobility has remained unchanged. Today, Metro Ride provides accessible city bus service for the general public, as well as paratransit service for people with disabilities. On behalf of Metro Ride, I invite you to give our quality services a try!

Greg Seubert, Transit Director

### Planning your trip

Use the map to find a route and bus stop locations that meet your travel needs. Take note of the direction of travel on one-way portions of the route.

All of the routes start and end at the downtown Transit Center, departing and returning every 30 minutes, all on the same schedule. Transfers from one route to another can be made (free of charge) at the Transit Center.

Schedule times are shown at three points along each route, in addition to the start and end times at the downtown Transit Center. These locations are called ‘timepoints’. Your bus stop may be between these locations. Use these timepoints to estimate the bus arrival time for your stop. For instance, if your stop is between timepoints 2 and 3, the bus will arrive between :37 and :45 after the hour or between :07 and :15 after the hour.

All Metro Ride bus routes have a route letter and name as shown on the map, which is also displayed on the bus destination signs. If you need assistance planning your trip, call Metro Ride at **715-842-9287**.

### Hours of Operation

Monday-Friday, 6:30 a.m. to 6:30 p.m.

### Holidays

Metro Ride does **not** provide service on the following Holidays: New Years Day, Memorial Day, Independence Day (July 4), Labor Day, Thanksgiving Day, Christmas Day.

### Office Hours

Monday-Friday, 8:00 a.m. to 4:30 p.m.

## How to Ride

### Catching the bus

Arrive at your bus stop a few minutes before the scheduled departure time. When you see the bus coming, step up to the curb and wave to the driver to let them know you’d like to board. If the bus stop is obstructed by snow, wait at the nearest opening in the snowbank, such as a driveway or crosswalk.

### Paying your fare

Pay your fare as you board the bus. Cash and tokens should be inserted into the slot in the top of the farebox (note that drivers do not make change). Tickets and transfers should be given to the driver. If you use a bus pass, you must show it to the driver each time you ride.

If you plan to transfer to another bus, ask the driver for a free transfer when you pay your fare, and tell them what route you will be transferring to. Transfers are valid only at the downtown Transit Center, and are valid for one trip on a different route. A transfer cannot be used for a return trip.

### On-board the bus

Take your seat quickly. The bus may begin moving unless you ask the driver to wait until you are seated. If the bus is crowded and there is no seat available, move toward the rear and stand where you can hold on to a handrail or grab strap. To ensure a safe, clean, comfortable ride, be considerate of your fellow riders, and follow these simple, common sense rules. As much as possible, please avoid moving about while the bus is in motion, particularly in wet or snowy weather when the bus floor is likely to be slippery.

### Departing the bus

Signal the driver about a block before your stop by pulling the cord located above or alongside the windows. Please remain seated until the bus has come to a complete stop. When the bus has stopped moving, exit the front or rear door and wait until the bus has pulled away before starting to cross the street.

### Bike Racks

Metro Ride buses have a bike rack on the front with the capacity for two bikes. Using the bike rack is free. Although they are easy to use, please read through the step-by-step instructions available on our website before giving them a try. Visit [metroride.ci.wausau.wi.us](http://metroride.ci.wausau.wi.us) and click the **Bike Rack Users Guide** link.

**Schedules, routes, fares and policies subject to change. See [metroride.ci.wausau.wi.us](http://metroride.ci.wausau.wi.us) for updates.**

## Rules of the Ride

Give your seat to any person who is less able to stand than you are.

Fold child strollers so the aisle remains clear for other riders.

Follow instructions provided by the driver.

Wear proper clothing (shirts and shoes are required; wearing ice-skates and roller blades is prohibited).

Use headphones when listening to audio.

Service animals are welcome. Other animals must be enclosed in a container and held on your lap.

No smoking, chewing tobacco or e-cigarette use allowed.

No eating or drinking.

No weapons or hazardous materials allowed.

Unruly passengers will not be transported.

See [metroride.ci.wausau.wi.us](http://metroride.ci.wausau.wi.us) for more riding rules.

Drivers may ask any riders not observing the rules to leave the bus.



420 Plumer Street  
 Wausau, WI 54403

715-842-9287  
[metroride.ci.wausau.wi.us](http://metroride.ci.wausau.wi.us)  
 email: [metroride@ci.wausau.wi.us](mailto:metroride@ci.wausau.wi.us)

## Accessibility



All Metro Ride buses are equipped with wheelchair lifts or ramps. Disabled riders who do not use a wheelchair but are unable to climb the steps may request to use the lift or ramp to board the bus. If your disability prevents you from using a Metro Ride bus, you may qualify for Metro Ride Paratransit service. It is an origin-to destination service which operates during the same hours and in the same general service area as Metro Ride bus service. Metro Ride must certify your eligibility before you can use this service. For additional information, call us at 715-842-9287 during regular office hours or visit our website at [metroride.ci.wausau.wi.us](http://metroride.ci.wausau.wi.us)

### Title VI

Metro Ride assures that no person shall, on the grounds of race, color or national origin be excluded from the participation in, be denied the benefits of, or be otherwise subjected to discrimination under any program, activity or service provided by Metro Ride, as provided by Title VI of the Civil Rights Act of 1964, as amended.

Persons who wish to make a complaint regarding violations of this policy may complete and submit a Title VI Complaint Form (Title VI Tsis Tsaus Siab daim ntawv) to Metro Ride, 420 Plumer Street, Wausau, 54403 or via email at [metroride@ci.wausau.wi.us](mailto:metroride@ci.wausau.wi.us)

Persons who wish to obtain additional information regarding Title VI obligations may contact Metro Ride at 715-842-9287 or refer to the Metro Ride Title VI Plan.

### ADA Policy Notice

In accordance with requirements of Title II of the Americans with Disabilities Act (ADA), Metro Ride will not discriminate against qualified individuals with disabilities on the basis of disability in its services, programs or activities. If you need assistance or reasonable accommodation in participating in a meeting or event due to a disability as defined by the ADA, please contact the City of Wausau ADA Coordinator at 715-261-6620 or via email at [clerk@ci.wausau.wi.us](mailto:clerk@ci.wausau.wi.us) at least 48 hours prior to the scheduled meeting or event to request an accommodation. Written requests may also be submitted in writing to the ADA Coordinator using the ADA Accommodation Request Form.