



# works for you!

## Mayor's Message - Robert B. Mielke

From the entire city of Wausau, we extend our deepest sadness and sympathy to the victims and families of the recent tragic events that happened on March 22, 2017 in our neighboring communities. We cannot understand or accept why such things happen, but all of us share in the grief and sadness in your loss. We also wish to express our support and respect to Chief Wally Sparks and the Everest Metro Police Department, Chief Jeff Hardel and The Wausau Police Department and Sheriff Scott Parks and the Marathon County Sheriff's Department.



We are very grateful and truly appreciate all that everyone involved in local law enforcement does for our entire community. Thank you for your professionalism, dedication and selflessness in keeping us safe and protected.

There have been several social initiatives going on in Wausau. On April 6th, myself, the entire city council and all city department heads attended a presentation for the "Towards One Wausau" diversity workshop. It was hosted by Mr. Mort McBain and leaders from UWMC and NTC. This is a coalition of many government, business, educational leaders and private citizens speaking about engaging our community in a positive diversity dialog. The results of this workshop will help facilitate measureable truths, such as disparities facing minority populations in income, educational achievement, employment, home ownership, arrests, convictions and incarceration rates. Discussion of perceptions, attitudes and the existence of discrimination were discussed and feedback from this workshop will be utilized in upcoming public events.

Also, on a suggestion brought forward by District # 1 Alderperson Pat Peckham, a conference called "Speak Your Peace-the Civility Project" was held at NTC on April 12th. This is an initiative that has been successfully held in different communities of the state, in order to promote better communications and to work with all other invited members of the surrounding cities, village and county boards, in a more respectful, civil and effective way. It is not a campaign to end disagreements but to improve public discourse by reminding ourselves of the very basic principles of respect towards one another. By learning more about working and better communicating with each other, it will help in paying attention, being inclusive, to listen, not gossip, use constructive language, repair damaged relationships and to take responsibility. It was very informative and productive. It will hopefully, take hold as we continue to move forward in working and solving problems that all of us involved in local government face in our daily interactions with one another.

April 20th will be my one year anniversary serving as your Mayor. I can't believe how fast it has gone by! I absolutely LOVE this position and even on the days where it can be challenging, I am still humbled, honored and privileged to be serving as your Mayor of our wonderful city! On that day (April 20, 2017), I will hold a "State of the City" address. This will inform residents of the positive things happening, goals accomplished and challenges and improvements needed for a strong Wausau.

It is finally time for warm weather to arrive! I invite all of you to participate in the many festivals, sporting activities and events happening in the Wausau area. There are so many things to do in the spring and summer in Wisconsin-after the winter we have had, GET OUT and enjoy the warmth and longer days!!!

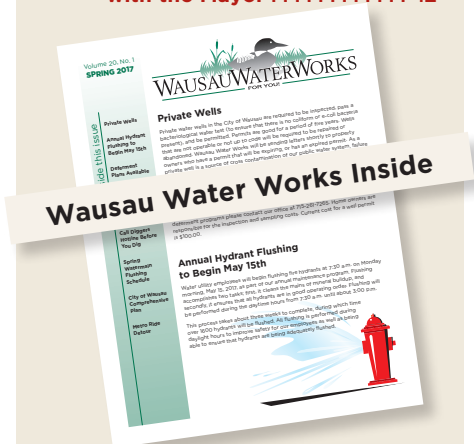
As always, please know that I am very accessible and easy to get a hold of and welcome any resident to contact me at any time, with any issue that is a concern.

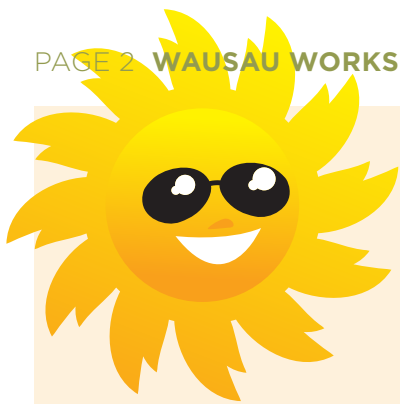
Thank you,

Robert B. Mielke, Mayor-City of Wausau

inside this issue.

- Calendar of Events**
- 2017 Wausau Outdoor Pools ..... 2
- Memorial Day Parade ..... 3
- Spring Walk at Monk Gardens ..... 12
- 2017 Recycling Collection Calendar & Info** ..... 4
- Large Item Drop-Off
- Clean It Up, Wausau ..... 5
- Yard Waste Site ..... 5
- YPWeek Wisconsin April 22-29, 2017**
- Upcoming Events in Wausau ..... 6
- YPWeek Wisconsin will have a strong showing in Wausau ..... 6
- Woodson Art Museum 2017 Schedule** ..... 7
- Fire Department News**
- Community Paramedic Corner ..... 8
- Police Department News**
- Safety City ..... 8
- Parks, Recreation and Forestry**
- Street Tree Maintenance ... 8
- Emerald Ash Borer Management Plan ..... 8
- Parks, Recreation and Forestry Department takes a new look ..... 8
- City Flower Program ..... 9
- Exciting Biking Opportunities** ..... 9
- Local Media Award Announced** ..... 10
- Construction/Remodeling Projects** ..... 10
- Chase'n Chocolate 5k Run & 1.5 Mile Walk ..... 10
- Earth Day Ghidorzi Green & Clean. .... 11
- Bike to Work with the Mayor** ..... 12





## 2017 Wausau Outdoor Pools

### Pool Locations:

#### Kaiser

900 E. Bridge Street  
Opens June 10, 2016

#### Memorial

505 Memorial Park Road  
Off Sturgeon Eddy Road

#### Schulenburg

1533 Summit Drive  
**Grand Opening -**  
**June 10, 2017 at 12:30 p.m.**

### Pool Fees:

Daily Open Swim  
from 1:00 p.m. - 7:50 p.m.

- Infants under 1 year - FREE
- Youth and Seniors - \$2.00
- Adults 18-59 years - \$3.00

### Season Passes

- Financial Assistance Available

### Lessons

- We'll teach your kids to swim weekdays from 10:10-11:55 a.m.
- Call the Park Office at 715-261-1550 for details

**Mission Statement...** In response to our citizens, we will provide services in the most effective manner in order to promote and enhance our living environment. Plan and encourage positive growth. Promote a positive community image by encouraging citizen involvement and civic pride.

## Calendar of Events - 2017

### April

<b>17,18,19,20</b>	Start Smart Toddler Sports, Parent-Child Intro to Sports, Ages 3-6, East Gate Hall, Marathon Park, \$25/\$30 Parks Department 715-261-1550	6pm
<b>22</b>	Ghidorzi Green & Clean Event, www.ghidorzigreenandclean.com, 715-348-1360	8am-Noon
<b>28,29</b>	Clean It up, Wausau LARGE ITEM DROP OFF Event, Yard Waste Site, 105 E. Chellis Street.	9am-5pm
<b>28</b>	Duane Corbin Shooting Range Park opens Call Parks Dept at 715-261-1550	
<b>28</b>	Marathon Park Camping Opens - Call 715-261-1566 for reservations	

### May

<b>1</b>	Swim Lesson Sign-up begins at Park Office, 212 River Drive or online at www.co.marathon.wi.us Call Parks Dept at 715-261-1550	
<b>1,2,3,4</b>	Start Smart Intro to Baseball, Ages 3-6yrs, East Gate Hall, Marathon Park, \$25/\$30 Call Parks Department for info 715-261-1550	6pm
<b>4</b>	1st Thursday- Downtown, Sponsored by Wausau Events	4-8pm
<b>13,14</b>	Wausau Whitewater Recreational Release, Whitewater Park. (Lessons available) Call 715-203-1279 www.wausauwhitewater.org	10am-4pm
<b>15</b>	Ride to Work with the Mayor, Start at Marathon Park, <b>Sponsored by Mayor's Office 715-261-6800</b>	7:45 am
<b>15</b>	Arthritis Foundation Walk With Ease Class, Session I, Guided outdoor walking program for those with arthritis, \$15 includes book, Call Parks Dept 715-261-1550. Will walk indoors when it rains.	3-4pm
<b>22-26</b>	Lifeguard Class, Must be at least 15yrs old. John Muir Pool, Fee \$100.00 Call Parks Dept 715-261-1550	5-9pm
<b>20</b>	International Migratory Bird Day Spring Walk, Monk Gardens, 1800 N. 1st Ave	6:30am
<b>21</b>	Open Streets Wausau - Downtown Wausau and north to Athletic Park	Noon-4pm
<b>26</b>	Marathon Junction opens at Marathon Park	
<b>27</b>	Memorial Day Parade- Marathon Park to VFW	10:45 am

### June

<b>1</b>	First Thursday - Downtown, <b>Sponsored by Wausau Events</b>	4-8 pm
<b>3</b>	Marathon County Splash Pad opens - Ages 10 and under must be accompanied by an adult, \$.50. <b>Sponsored by the Parks Dept.</b>	12-7pm daily
<b>10</b>	Wausau Pools open	1-7:50pm
<b>10,11</b>	Wausau Whitewater Recreational Release, Whitewater Park. (Lessons available) Call 715-203-1279 www.wausauwhitewater.org	10am-4pm
<b>12-30</b>	Swimming Lessons - Session I Call Parks Dept to register 715-261-1550	
<b>6/15-8/6</b>	City Playground Program Opens - supervised sites, \$32 - Resident, \$41 - Non Resident. Call Parks Dept 715-261-1550 for information	
<b>12-29</b>	Family Tennis Lessons - Session I Up to 4 family members (must include 1 adult) Mon/Tue/Thursday nights - Oak Island Courts, \$67 - Residents, \$85 - Non Residents	6-7:15pm
<b>6/12-8/14</b>	Tennis Camp - Ages 5-17 yrs, Week-long 1/2 day camps. Times and fees vary by age. Call Parks Dept 715-261-1550	
<b>16,18</b>	Summer Kick-Off Celebration, Oak Island Park; Fathers Day Car Show on Sunday, <b>Sponsored by Wausau Events</b>	<b>Friday</b> 5pm-11pm; <b>Sunday</b> <b>Car Show</b> 10am-3pm
<b>17</b>	Splash into Safety - FREE - All children receive a free life jacket. Memorial Pool - Pre-registration required - call 715-847-2380	10am
<b>18</b>	Dog Gone Pool Party - Splash Pad, Marathon Park, 2 dogs per adult \$5.00 per person, 12 & under free with paid adult. Collar or harness & proof of current vaccinations required	5:30-8pm

**June** (continued)

<b>21</b>	Concert on the Square, 400 Block, <i>Sponsored by Wausau Events</i>	6-8pm
<b>22</b>	Marketplace Thursdays, 400 Block, <i>Sponsored by Wausau Events</i>	9am-2pm
<b>24,25</b>	Wausau Whitewater Recreational Release, Whitewater Park. (Lessons available) Call 715-203-1279 www.wausauwhitewater.org	10am-4pm
<b>26</b>	Arthritis Foundation Walk With Ease Class, Session II, Guided outdoor walking program for those with arthritis, \$15 includes book, Call Parks Dept 715-261-1550. Will walk indoors when it rains.	3-4pm
<b>28</b>	Concert on the Square, 400 Block, <i>Sponsored by Wausau Events</i>	6-8pm
<b>29</b>	Marketplace Thursdays, 400 Block, <i>Sponsored by Wausau Events</i>	9am-2pm

**July**

<b>6</b>	First Thursday - Downtown, <i>Sponsored by Wausau Event</i>	4-8pm
<b>9</b>	Jazz on the River- Library Plaza, <i>Sponsored by River District</i>	5-7pm
<b>3-21</b>	Swimming Lessons - Session II Call Parks Dept to register 715-261-1550	
<b>5-20</b>	Family Tennis Lessons - Session II	6-7:15pm
<b>5</b>	Concert on the Square, 400 Block <i>Sponsored by Wausau Events</i>	6-8pm
<b>13</b>	South Beach Up North Live Radio Show. Wisconsin Public Radio Go to their website www.sobechamberensemble.org or call 715-845-5822	10am
<b>6</b>	Marketplace Thursdays, 400 Block, <i>Sponsored by Wausau Events</i>	9am-2pm
<b>10-14</b>	Challenger Tetra British Soccer Camp. Ages 3-12, Times/fees vary. Go to www.challengersports.com to sign up on line or call 715-261-1550 for details	9am-4pm
<b>12</b>	Concert on the Square, 400 Block <i>Sponsored by Wausau Events</i>	6-8pm
<b>13</b>	Marketplace Thursdays, 400 Block, <i>Sponsored by Wausau Events</i>	9am-2pm
<b>13,14, 15,16</b>	Balloon Rally & Rib Fest, Downtown Airport and 400 Block, Sponsored by Wausau Events 715-845-1328	
<b>15</b>	South Beach Up North Concert, Mozart on the Move, UU Church	6pm
<b>15</b>	Balloon Chase 5K Run/Walk, Downtown Airport, 715-845-1328 <i>Sponsored by Wausau Events</i>	7:30am
<b>15</b>	Chalkfest, 400 Block	<b>Saturday</b> 8-8pm <b>Sunday</b> 7-11am
<b>16</b>	Jazz on the River - Library Plaza, <i>Sponsored by Wausau River District</i>	5-7pm
<b>15,16</b>	Wausau Whitewater Recreational Release, Whitewater Park, (Lessons available) Call 715-203-1279 www.wausauwhitewater.org	10am-4pm
<b>16</b>	South Beach Up North Concert at St. John's Episcopal Church	Noon
<b>19</b>	Concert on the Square, 400 Block <i>Sponsored by Wausau Events</i>	6-8pm
<b>21</b>	South Beach Up North Concert, Dvorak and Ravel Piano Trios. First UU Church, 715-845-5822 sobechamberensemble.org	Noon
<b>20</b>	Marketplace Thursdays, 400 Block, <i>Sponsored by Wausau Events</i>	9am-2pm
<b>22,23</b>	Wausau Whitewater Team River Runner, Whitewater Park, Call 715-203-1279	
<b>23</b>	Jazz on the River - Library Plaza, <i>Sponsored by Wausau River District</i>	5-7pm
<b>7/24- 8/10</b>	Family Tennis Lessons - Session III Call Parks Dept to register 715-261-1550	6-7:15pm
<b>7/24- 8/11</b>	Swimming Lessons - Session III Call Parks Dept to register 715-261-1550	
<b>26</b>	Concert on the Square, 400 Block <i>Sponsored by Wausau Events</i>	6-8pm
<b>27</b>	Marketplace Thursdays, 400 Block, <i>Sponsored by Wausau Events</i>	9am-2pm
<b>29,30</b>	Hmong Sports, Music & Arts Festival - Eastbay Sports Complex. Organized by the Hmong American Center, Inc. 715-842-8390	8am-8pm
<b>30</b>	Jazz on the River - Library Plaza, <i>Sponsored by Wausau River District</i>	5-7pm
<b>31</b>	Dog Gone Pool Party - Splash Pad, Marathon Park, 2 dogs per adult \$5.00 per person, 12 & under free with paid adult. Collar or harness & proof of current vaccinations required	5:30-8pm

**Memorial Day Parade - Participants Wanted!**

The City of Wausau Veterans Committee is organizing the annual **MEMORIAL DAY PARADE** to be held on Saturday, May 27, 2017 at 10:45 a.m.

Patriotic floats, marching units, and any group or organization interested in participating is needed. Line-up begins at 9:45 a.m. and the line-up location will be in the Fair Midway area of Marathon Park, east of the grandstands. Step-off for the parade will be at 10:45 proceeding through the Stewart Avenue Main Gate traveling east on Stewart Avenue to River Drive, concluding at the VFW at 388 River Drive. The ceremony at the VFW building will begin at approximately 11:00 a.m. with opening remarks by a City Representative. Following will be the exercise of the Military Rites and Taps.

Please join us as we honor our fallen comrades by coming out and enjoying the parade. Anyone wishing to participate are encouraged to call either Paul Missett at 715-842-9554 or Roger Sydow at 715-675-1839.



**In celebration of International Migratory Bird Day**

**Please join the Wausau Bird Club in a Spring Walk at the Robert S. Monk Gardens**

Saturday May 20 2017 • 6:30 am  
1800 N. 1st Ave., Wausau, WI 54401

This walk is before the Monk Gardens Event: the Green Saturday Plant Sale and Garden Flea Market

We will stroll the gardens in search of spring migrants then enjoy shopping for plants and garden items at the flea market

**Bring binoculars if you have them!**  
**Free event!**



## 2017 Recycling Collection Calendar & Info

Refer to the table and the calendar to determine your recycling and garbage pick-up day. If you have any questions as to whether you live in a blue or yellow collection area, call City Hall at 715-261-6500. Recycling bins should be set out with garbage containers between the hours of 3:00 pm the day prior to collection day and should be removed from the curbside area by 11:00 a.m. the day after pick-up. **Keep this schedule for future reference and remember the holiday schedule of a “day delay” pick-up.**

<b>West Side of Wisconsin River:</b>		
North of W. Wausau Ave	Monday	Blue
North of Elm St., South of W. Wausau Ave. & East of USH 51	Monday	Yellow
South of Elm St. & North of Stewart Ave. including entire area West of USH 51	Tuesday	Blue
South of Stewart Ave. & North of Thomas St.	Tuesday	Yellow
South of Thomas St.	Wednesday	Blue

<b>East Side of Wisconsin River:</b>		
North of Marquardt Rd. & East of railroad tracks	Wednesday	Blue
North of Nina Ave. & South of Marquardt Rd. including homes West of the railroad tracks to Evergreen Rd.	Wednesday	Yellow
South of Nina Ave. & North of Hamilton St.	Thursday	Blue
South of Hamilton St. & North of Kickbusch St.	Thursday	Yellow
South of Kickbusch St., North of McDonald St. & East of Northwestern Rd.	Friday	Blue
South of McDonald St. & entire area West of Northwestern Rd.	Friday	Yellow

## 2017 Recycling Calendar

JANUARY						
S	M	T	W	T	F	S
	2	3	4	5	6	7
8	9	10	11	12	13	14
15	16	17	18	19	20	21
22	23	24	25	26	27	28
29	30	31				

FEBRUARY						
S	M	T	W	T	F	S
			1	2	3	4
5	6	7	8	9	10	11
12	13	14	15	16	17	18
19	20	21	22	23	24	25
26	27	28				

MARCH						
S	M	T	W	T	F	S
			1	2	3	4
5	6	7	8	9	10	11
12	13	14	15	16	17	18
19	20	21	22	23	24	25
26	27	28	29	30	31	

APRIL						
S	M	T	W	T	F	S
						1
2	3	4	5	6	7	8
9	10	11	12	13	14	15
16	17	18	19	20	21	22
23	24	25	26	27	28	29
30						

MAY						
S	M	T	W	T	F	S
	1	2	3	4	5	6
7	8	9	10	11	12	13
14	15	16	17	18	19	20
21	22	23	24	25	26	27
28	29	30	31			

JUNE						
S	M	T	W	T	F	S
				1	2	3
4	5	6	7	8	9	10
11	12	13	14	15	16	17
18	19	20	21	22	23	24
25	26	27	28	29	30	

JULY						
S	M	T	W	T	F	S
						1
2	3	4	5	6	7	8
9	10	11	12	13	14	15
16	17	18	19	20	21	22
23	24	25	26	27	28	29
30	31					

AUGUST						
S	M	T	W	T	F	S
		1	2	3	4	5
6	7	8	9	10	11	12
13	14	15	16	17	18	19
20	21	22	23	24	25	26
27	28	29	30	31		

SEPTEMBER						
S	M	T	W	T	F	S
					1	2
3	4	5	6	7	8	9
10	11	12	13	14	15	16
17	18	19	20	21	22	23
24	25	26	27	28	29	30

OCTOBER						
S	M	T	W	T	F	S
1	2	3	4	5	6	7
8	9	10	11	12	13	14
15	16	17	18	19	20	21
22	23	24	25	26	27	28
29	30	31				

NOVEMBER						
S	M	T	W	T	F	S
			1	2	3	4
5	6	7	8	9	10	11
12	13	14	15	16	17	18
19	20	21	22	23	24	25
26	27	28	29	30		

DECEMBER						
S	M	T	W	T	F	S
					1	2
3	4	5	6	7	8	9
10	11	12	13	14	15	16
17	18	19	20	21	22	23
24	25	26	27	28	29	30
31						



The following items may be mixed together:

- PLASTICS:** #1 - #7 plastics
- All plastic bottles & containers
  - Soda water and other drink bottles
  - Dairy containers & lids
  - Food & household bottles
  - Jars & jugs
  - Produce bakery & deli containers

- GLASS:**
- Clear brown or green bottles and jars
  - Soda, beer, juice and other glass food containers
  - Blue, green rose and yellow tinted glass

- ALUMINUM:**
- All aluminum cans
  - All steel or bi-metal cans
  - Metal lids & bottle caps
  - Aerosol cans, EMPTY, Non-pesticide, NO caps

- PAPER:**
- Newspaper & inserts
  - Magazines & books
  - Junk mail & envelopes
  - Phone books and catalogs
  - Writing paper and copier paper
  - Corrugated cardboard - Flatten boxes. (All pizza boxes with food contents should go in your regular trash)
  - Brown Grocery Bags
  - Box board and non-corrugated cardboard (shoebboxes, cereal, paper cores from rolled paper products)

**DO NOT PUT INTO RECYCLING CARTS:**

- Plastic film or shrink wrap
- Any # plastic bags (recycle at Target, Walmart, Pick N Save)
- Plastic straws, plates or silverware
- Drink pouches
- Foam or Polystyrene
- Styrofoam
- Aluminum baking pans or foil
- Mirror or window glass
- Motor oil containers
- Light bulbs
- Packing Peanuts, Bubble wrap
- Batteries
- Electronics
- Hazard waste - Dispose at Marathon County Landfill by calling 715-446-3101 x100.

City Of Wausau  
**Large Item Drop-Off  
 Clean It Up, Wausau**

**Friday & Saturday,  
 April 28 & 29, 2017  
 9:00 a.m. – 5:00 p.m.**  
 East end of E. Chellis Street  
 near the Yard Waste Site



The Mayor's N2N (Neighbor to Neighbor) Committee is partnering with local non-profit organization in another "Clean It Up, Wausau" event for Wausau residents to properly and safely dispose of unwanted items. Items can be dropped off at 105 E. Chellis Street. Follow the signs and please be prepared to **show proof of City of Wausau residency!** If you have questions, please call Public Works at 715-261-6960 or the Mayor's Office at 715-261-6800.

To dispose of other items, please call the Marathon County Solid Waste and Recycling Information line at 1-877-270-3989.

**UNACCEPTABLE ITEMS**

- Light Bulbs • Batteries • Explosives
- Smoke/Co Detectors
- Paint, Chemicals • Roofing Material
- Remodeling Waste-Insulation, Fiberglass
- Waste Oil, Antifreeze, Lead
- Fertilizers • Pesticides, Herbicides
- Compressed Gas Cylinders

**MEDICATION**

- Drop off at local Police Department

ACCEPTABLE ITEMS	FEE
<b>ALL ELECTRONICS:</b>	
All Computers, Faxes, Printers, Cell Phones, TVs, Mice, Keyboards, Anything with a cord	.40/lbs.
Broken TVs	.60/lbs.
<b>TIRES:</b>	
Up to 20"	\$5.00
Over 20"	\$10.00
<b>APPLIANCES:</b>	
Microwaves	FREE
Dehumidifiers, Air Conditioners	\$15.00
Refrigerators, Freezers	\$15.00
Snow blowers (gas, oil removed)	FREE
Lawnmowers (gas, oil removed)	FREE
Stoves	FREE
Washers, Dryers, Dishwashers	FREE
Scrap Metal	FREE
<b>FURNITURE:</b>	
Mattress/Box Springs	FREE
Tables, Chairs, Sofas	FREE

City Of Wausau  
**Yard Waste Site**

The City of Wausau Yard Waste Site is located at the east end of East Chellis Street.

**2017 HOURS OF OPERATION**

The Yard Waste Site will be open from April 1st through November 19th during the following hours:

Monday	CLOSED
Tuesday	CLOSED
Wednesday	9 a.m. to 8 p.m.
Thursday	CLOSED
Friday	CLOSED
Saturday	9 a.m. to 5 p.m.
Sunday	9 a.m. to 5 p.m.

**\*CLOSED EASTER SUNDAY  
 APRIL 16TH\***

**\*NOTE\* Schedule times may vary in the fall, call D.P.W. at 715-261-6960 to confirm scheduled hours.**

The site will be locked and gated during non-operating hours. The site is monitored by video surveillance. Citations will be issued to parties who leave yard waste outside the gate of the facility.

**MATERIALS ACCEPTED:**

Garden & flower debris, Grass, Leaves, Tree branches/brush

The City of Wausau appreciates your cooperation. The site is for City of Wausau residents only. Call The Department of Public Works at 715-261-6960, if you have any questions, Office hours are: Monday thru Friday 7:00 a.m. – 3:30 p.m.

## YPWeek Wisconsin - April 22-29, 2017

### Upcoming Events for Wausau

*presented by Greenheck*

#### April 22

8am-1pm Ghidorzi Green & Clean

#### April 24

7-8am Sunrising cycling Workout  
LIFT Athletics  
6-9pm Speaker Crawl  
Greenheck Fan Corp

#### April 25

7-8am Sunrise Bodyweight Bootcamp  
Woodson YMCA  
11:30am-1pm Toward One Wausau Roundtable  
305 3rd Street, Wausau  
5:30-8:30pm Riverfront Rally  
Wausau's East Riverfront (WOW)

#### April 26

7-8am Sunrise CrossFit Workout  
LIFT Athletics  
5:30-7:30pm More Than Just a Jam Session  
Holly Ann Music  
8-10pm Trivia Night  
Glass Hat

#### April 27

6:45-7:45am Sunrise Yoga Workout  
Woodson YMCA  
12-1pm The Lowdown on LinkedIn  
Marathon County Public Library  
6-9pm SOUPthree  
TBA One Week Before

#### April 28

6-10pm We Are Wausau  
Wausau World Market

#### April 29

10am-5pm Bull Falls Brew Workshop  
Bull Falls Brewery  
8pm-2am YPWeek Wausau Finale Party  
Malarkey's Pub

#### Follow the movement!

 @YPWeekWausau

 @YPWeek\_Wausau

#### RSVP at

[ypweek.com/communities/wausau](http://ypweek.com/communities/wausau)

## YPWeek Wisconsin will have a strong showing in Wausau

Several community groups and social activists in the area have teamed up with MCDEVCO for a week of Wausau area community engagement programming as part of the statewide Young Professional Week initiative, known as YPWeek Wisconsin. Now in the initiative's third year, the week of grassroots-planned events will run April 22 to 29 and is coordinated by more than 45 organizations in 25 different communities across Wisconsin.

Of the more than 175 events planned throughout the state, YPWeek Wausau will feature 15 opportunities designed to inspire young adults in the area to think differently, make things happen and take pride in living in our community. Local efforts for this year's week of programming are being made possible through a generous contribution from Greenheck Fan Corporation, the presenting sponsor for YPWeek Wausau 2017. Greenheck has recently been named a Bubbler Award recipient - an honor awarded by YPWeek Wisconsin to 10 companies in the state which were nominated and selected as the best places in Wisconsin to work as a young professional. Greenheck is the only company in the state to win a Bubbler Award in three consecutive years.

The week is also being supported by more than 30 other local businesses and organizations. MCDEVCO's community engagement arm is facilitating the collaboration of several community groups to plan and execute YPWeek Wausau 2017 - Urban Pulse, Friday Night Fun, Pure Entertainment, Wausau Quadcopter, People for the Power of Love and Toward One Wausau.

Throughout the YPWeek planning process, these groups have benefited from cross-organizational engagement and realized that they're able to make more impact in their respective missions by working collaboratively toward a goal. It's a result that the groups feel the Wausau community needs more of in order to ensure long term community and organizational prosperity.

***"Through this one-of-a-kind grassroots initiative, we are able to put on weeklong programming created for YPs by YPs - a movement aimed at bringing our community together."***

says YPWeek Wausau co-chair Cassandra Ambrosius.

While the tangible outcome of YPWeek Wisconsin is a jam-packed week of social and community engagement programming, the most impactful result the initiative yields in each of the communities can't be measured by the number of events on the calendar. Just ask Wausau Daily Herald Going Out Reporter, Laura Schulte, who moved to Wausau from Indiana for her job just more than a year ago.

"YPWeek Wausau has given me a window to see the incredible passion of Wausau's younger generation," says Schulte.

The 23-year-old transplant has found her way in the community due in part to her experiences in co-chairing the YPWeek Wausau efforts. "It's changed my view of the city and made it a much better place for me to call home."

From an informal speaker series and the third edition of Wausau SOUP (titled SOUPthree) to a cultural festival and a beer brewing workshop, YPWeek Wausau will provide plenty of opportunities for the young leaders and creatives in our community to connect, learn and collaborate. For a full schedule of events for Wausau and the rest of the state, visit [www.ypweek.com](http://www.ypweek.com).





The City of Wausau is proud to spread the announcement that the Woodson Art Museum is a National Medal finalist for Museum and Library Service. The National Medal is the nation's highest honor given to museums and libraries for service to the community. Congratulations!!

## 2017 Exhibition Schedule

**March 4 - May 28, 2017**

### M.C. Escher: Reality and Illusion

The most iconic works by Dutch artist M.C. Escher (1898-1972), including a pair of hands drawing themselves and fish morphing into birds, are familiar to many. This exhibition of 120 woodcuts, lithographs, mezzotints, and drawings delves deeper into both the literal and impossible worlds Escher created over a career spanning five decades. Drawn from a large private collection of M.C. Escher's work, Reality and Illusion includes early figure drawings, lesser-known book illustrations, detailed Italian landscapes, the tessellations for which he became famous, and examples of his signature architectural fantasies in which stairways seem to go both up and down. From the collection of Herakleidon Museum, Athens, Greece.

**March 4 - May 28, 2017**

### Illustrating Illusions: Drawings by Robin Lauersdorf

Whimsical, yet meticulous, graphite pencil drawings by Wisconsin artist Robin Lauersdorf, long interested in Escher's work, are featured in an exhibition organized by Woodson Art Museum curator of exhibitions, Andy McGivern. Lauersdorf playfully juxtaposes reality and imagination and manipulates perspective.

**June 3 - August 27, 2017**

### Nature, Tradition, & Innovation:

#### Contemporary Japanese Ceramics

Innovative and bold sculptural forms by more than forty contemporary Japanese ceramists, inspired by the natural world, depict mountains, waterfalls, ocean shores, and bamboo groves.

### Woodson Art Museum

**Hours:** Tues-Fri. 9am-4pm  
 First Thurs. 9am-7:30pm  
 Thursdays during Birds in Art 9am-7:30pm  
 Sat-Sun Noon-5pm  
 Closed Monday & holidays, including New Year's Day, Easter, July 4, Thanksgiving, Christmas Eve, & Christmas

**Admission:** Always Free Admission

**Phone:** 715.845.7010

**E-mail:** museum@lywam.org

**Location:** Franklin and 12th Streets  
 Wausau, WI 54403-5007  
 700 North Twelfth Street

**Online:** www.lywam.org

## Fire Department News



### Community Paramedic Corner

*An apple a day keeps the doctor away; or, should it be an apple a day keeps the primary care provider away?*

A primary care provider is what most people just call "their doctor". Primary care providers are generalists who treat diseases and illnesses and also provide preventative care and health education to their patients. A specialist on the other hand is a doctor who has expert knowledge in a particular area and whose practices focuses upon that specific area of medicine. The primary care provider is not only the individual that would refer you to a specialist but would also review the care that was provided by that specialist. They put all the pieces together and are therefore able to provide their patients with the "big picture" as it relates to their personal health and wellbeing. A primary care provider is the best advocate for a patient's individualized health care; therefore, if you currently don't have a primary care provider, seek one out today.

## Police Department News



### Safety City

Safety City is a program designed for children who will be entering Kindergarten in the fall of 2017. Although children entering first grade are welcome, if they did not attend last year. This program is taught by former

Wausau Police "Officer Friendly" Maureen Pilsner and a Wausau School Districts summer school teacher. Safety City teaches your child about many various safety issues such as traffic safety, stranger danger, water safety, fire safety, school bus safety and bicycle safety. Classes are held in June and are 1 ½ hours long Monday-Friday at Grant School. This year we will also offer an evening class. The cost is \$10. Financial assistance is available if needed. Registration brochures are available at the Wausau Police Dept. and Wausau elementary schools (public and parochial) and on our website. Questions can be directed to Maureen Pilsner at 715 261-7853.





## Parks, Recreation and Forestry

### Street Tree Maintenance “Suckers” or sprouts on street trees

The City of Wausau has approximately 25,000 street trees. These are the trees planted and grown along Wausau City streets primarily between the sidewalk and curb where both are present. Some residential streets have curb but no sidewalk and trees are planted and maintained in these areas also. The situation varies depending on which area of the City you live in. There is no hard and fast rule but if a tree is growing within several feet of the street there is a high probability that the tree is on City right of way.

The City of Wausau has a “Tree Ordinance” which is a portion of the Wausau municipal code that gives authority and some guidelines in tree care of trees on City property including trees on City right of way. One of the “prohibited” activities is for homeowners to trim or prune street trees. The intent of this portion of the ordinance is to curb unnecessary pruning of public trees.

The City of Wausau Parks Recreation and Forestry Department has a staff and equipment to maintain public trees. That being said, the full time staff for planting, trimming and removing street trees totals just over 3 and 1/3 full time employees.

Because of staffing levels our pruning consists of large deadwood removal, low limb removal over streets and sidewalks, removal of limbs encroaching on homes and businesses, intersection/stop sign visibility issues and other miscellaneous pruning.

Removal of “suckers” or sprouts from near the ground and lower trunk of some trees is needed maintenance but in the “big picture” is rather low on our priority list. We do take requests from homeowners for this work and develop our own lists as we notice them developing. The suckers on some trees grow rapidly and may need annual removal. Other trees may only need them removed every two to three years as they grow and obstruct visibility or cause other problems.

We use seasonal employees to remove most of the suckers and other low limbs from smaller trees. With a minimum of training and a few basic tools, suckers can be removed and we use this as “fill in work” between other maintenance activities.

Homeowners that wish to remove suckers from their street trees are welcome to do so. If removed when they are small they are easily cut and the amount of debris is minimal.

Suckers are a growth from the trunk or root crown of the tree and there is no chemical treatment that we have found that prevents this growth without damaging the tree. Some tree species are more prone to this type of growth such as basswood. Other tree species may have trunk suckers when they are young but the growth will cease after the trees have been established and the bark on the lower trunk thickens.



## Parks, Recreation, and Forestry Department takes on a new look

After decades of a familiar circular green logo with a conifer tree, the Parks, Recreation, and Forestry Department has a new look. The old logo spoke of the natural attributes, but it didn't tell the whole story or how the department has changed, especially in recent years. The department continues to have many natural gems but also needed a logo that showed the role they have in supporting healthy active lifestyles.



Wausau & Marathon County  
**Parks, Recreation  
& Forestry**

## Emerald Ash Borer Management Plan



As of the publication of this newsletter Emerald Ash Borer or EAB has not been detected in Marathon County. A year ago EAB was confirmed in the City of Stevens Point in Portage County and it is only a matter of time before it is found in Marathon County.

For the past several years the City of Wausau has been preparing for this event by removing a number of our ash street trees, preparing a written EAB Management Plan (now under revision), informing public officials of options available to meet the demands and challenges this invasive pest will bring to the community.

With the proximity of the threat, City of Wausau officials have agreed to a plan of chemical treatment of approximately 2/3 of the current ash street tree population which is approximately 5,000 out of the entire 25,000 street tree population.

Chemical treatment will begin after EAB is confirmed in Marathon County or the City of Wausau.

In 2017 the City of Wausau has budgeted a supplemental “ash removal contract” specifically to remove lower condition ash trees. Ash trees in poor physical condition, growing in undesirable sites such as under high voltage electrical wires or those that were planted in boulevard areas that are inadequate for future growth and will result in sidewalk and other infrastructure damage will be those looked at first.

The working plan will be to remove approximately 1/3 of the current ash population over several years starting in 2017 with the subsequent replacement of those trees with a variety of tree species that will diversify the overall street tree population.

## City Flower Program

The flower program is one of the many services brought to you by the Wausau and Marathon County Parks, Recreation and Forestry Department. Every year we field numerous calls from the local public and other communities on how our flower program works and how we keep our flowers in the baskets and planters so healthy. We start early to get the gorgeous plants ready for you to enjoy - beginning on Memorial Day and lasting through the first frost. Our greenhouse opens its doors on March 1st of every year even as the sleet and snow are keeping us cold. The majority of the plants that you see lining the streets of downtown and in the parks are started by seeds—thousands of seeds. For three months these plants will continue to grow, be transplanted, and cared for with TLC and a little fertilizer mixed in, until outdoor planting time begins. To bring additional color and height to the gardens, we began fabricating pots out of PVC remnants (reduce, reuse, recycle!) during the off season. Choosing the correct plant for the site and proper maintenance are the true keys to success in growing bountiful baskets and annuals.

Here are how the planters transform from transplanting the flowers from the greenhouse (top picture) through the middle of summer (bottom picture) at the Marathon County Courthouse (pictured left) and the Wausau City Hall (pictured right):



With thousands of plants growing in the greenhouse, it is too small to house the beautiful baskets that line the streets. Therefore, we contract out the baskets and then maintain them during their growing season.

Here are how the baskets look outside of our greenhouse in May compared to how they have grown during the summer:



We always welcome questions and feedback about the flower program. Inquiries can be directed to 715-261-1577. We hope that you continue to enjoy the flowers!

## Exciting Bike Opportunities

Last spring the City of Wausau announced the news of being recognized as a Bronze-level Bicycle Friendly Community by the League of American Bicyclists. To continue with that momentum, the Bike & Pedestrian Advisory Committee will have a number of unique biking opportunities as we enter into nicer weather this spring and summer.

**Monday, May 15, 2017 - Ride to Work with the Mayor** (see details of this event on the back page)

**Sunday, May 21, 2017 - Open Streets Wausau**, 12:00 p.m. - 4:00 p.m. This event will close 3rd St to cars from Washington (the mall) to Wausau Ave. and open it to people biking, walking, skating, rolling.... anything non-motorized. The River's Edge Trail will be utilized for the return trip south and a safe lane on Washington Street will be provided to return to the downtown. There will be activities along the route for all ages, food truck vendors, and the freedom to explore the city at a comfortable pace.

**June - Poky Yogi Pedal:** Want to try out some yoga? We'll stop at three yoga studios on our poky yogi tour, each with a short and unique yoga demonstration. Bring your own mat or use ones provided. (Date TBA)

**July - Mystery History Tour:** Join us with narrator, Nick O'Brien, and our official historian Gary Gisselman for a cool history tour of one side of Wausau. (Date TBA)

**August - Poky Night Rider:** The first ever Poky Pedal night ride! Grab your lights and let's meet after the sun goes down for some fun riding around! Unlike most poky pedals, this one will meet on The 400 Block. Arm your bike with all the lights you can muster — we want to be lit up like a Christmas tree! (Date TBA)

**Facebook Page is Bike Fun Wausau**  
Contact is  
Brian Kowalski,  
brian@thecitypages.com





## Local Media Award Announced



The City of Wausau is proud to receive word from the WISCONSIN COMMUNITY MEDIA organization that the WAUSAU AREA ACCESS MEDIA (formerly Wausau Area Access Channels) will be receiving two awards at their Spring Conference held in Milwaukee this month.



The first award is for WAAM's music video production of Andy Zynda's "One More Time for Santa". This production received an "EXCELLENCE" in the Performing Arts, Professional Category. The second award is for WAAM's video production of "A Very Joe E. Christmas 2016" concert featuring many local artists, performed at The Grand Theater this past December. This production received a Best in Show - Small PEG Media Center and an "EXCELLENCE" in the Performing Arts, Professional Category.

Anyone wishing to view Wausau Area Access Media videos, please browse to [www.tinyurl.com/WAAMedia](http://www.tinyurl.com/WAAMedia) or [waam.viebit.com](http://waam.viebit.com).

Mayor Mielke was proud to proclaim 2017 as a YEAR OF LOCAL TALENT IN MUSIC & ART this past December and is especially proud of the accomplishments the Wausau Area Access Media produce on a daily basis. "These awards are one example of enhancing our cultural art environment", said Mayor Robert Mielke.

## Construction/Remodeling Projects

If you are planning any construction or remodeling projects, we would like to remind you that permits are required for most projects in the City of Wausau, such as:

- New construction or an addition to a building.
- Alterations/remodeling (kitchen cabinets, drywalling, etc.).
- Construction of a detached garage, lean-to, storage building, gazebo, or any additions or alterations thereto.
- Construction or reconstruction of a deck, stoop, porch or ramp.
- Residing of a building. (Make sure house numbers get reinstalled upon completion.)
- Roofs: A building permit is required for the installation/replacement of all roofing in the City including reshingling.
  - Old shingles must be removed, unless the Building Inspector approves installation over one existing layer.
  - Metal roofs are NOT allowed on residential buildings in the City unless they meet certain guidelines and are approved on an individual case-by-case basis by the City. (Metal roofs using corrugated panels or exposed fasteners will not be approved for use on residential buildings.)
- Construction, replacement or expansion of a fence. The purpose for requiring permits for fences is to ensure the location, height, materials and maintenance of them, so they properly comply with City regulations and in order to prevent the creation of nuisances.
- Demolition of a building.
- Separate permits are required for any plumbing or electrical work.

A more complete list of permit requirements is available on-line at: [www.ci.wausau.wi.us/Departments/Inspections/ResidentialPermitRequirements.aspx](http://www.ci.wausau.wi.us/Departments/Inspections/ResidentialPermitRequirements.aspx)

Permits are required not only to ensure your project meets City zoning regulations and complies with City and State codes, but also lets us assist you in achieving a project that is safe and structurally sound.

The inspectors are typically in the office between 8:00-9:00 AM and 12:30-1:30 PM, Monday through Friday, to review plans, issue permits and answer questions. The remainder of the work day, they conduct on-site inspections. If these times are not convenient for you, contact the Division of Inspection, Zoning and Electrical Systems at 715.261.6780, and they are generally able to make other arrangements for you to meet with their staff.

## MARSHFIELD CLINIC HEALTH SYSTEM



Marshfield Clinic

SecurityHealthPlan

PROUDLY PRESENT



# CHASE'N CHOCOLATE

## 5k Run & 1.5 mile Walk

Benefitting The Women's Community

Saturday, May 13, 2017  
Marathon Park, Wausau  
9 AM



REGISTER ONLINE:

[womenscommunity.org/run-walk](http://womenscommunity.org/run-walk)





# APRIL 22 | EARTH DAY

## GHIDORZI



PRESENTED BY THE  
GHIDORZI FOUNDATION

REGISTER ONLINE: [www.ghidorzigrreenandclean.com](http://www.ghidorzigrreenandclean.com)

OR CONTACT TAYLRE AT 715.348.1360 OR [TAYLRES@GHIDORZI.COM](mailto:TAYLRES@GHIDORZI.COM)

BY FRIDAY APRIL 14 TO GUARANTEE YOUR FREE T-SHIRT.

**Please Join Us.** The Ghidorzi Green & Clean is greater Wausau's annual community-wide cleanup to free our beautiful landscape of litter and debris. Individuals and groups of all ages and sizes can help give our community a clean start to spring. The event is a productive way to celebrate Earth Day and a healthy outdoor activity for families, friends, neighbors and coworkers. Safety green T-shirts, trash bags and gloves are provided free of charge, along with hot Starbucks coffee and refreshments to energize our efforts.

### EVENT KICK-OFF LOCATION

Corporate Cove Tower | One Corporate Drive  
Wausau, WI

**FUN FOR ALL AGES  
INCLUDING FAMILIES:**

**KID'S T-SHIRTS, KID-FRIENDLY TRASH  
PICK-UP ZONES, KID-SIZED GARBAGE BAGS**

### April 22, Earth Day

**8 a.m.** - Refreshments, check-in, live WIFC broadcast from Dave Kallaway and Susan Kennedy



**8.45 a.m.** - Deployment of volunteers

**9 - 11 a.m.** - Trash pick-up

**11 a.m.** - Event completion, volunteers depart from their cleanup site

**11.15 - 1 p.m.** - River Valley Bank is hosting a free **Brat Fry After Party** for all volunteers following the cleanup at their Wausau Branch, 327 N. 17th Avenue, Wausau, 54401





## CITY OF WAUSAU

407 Grant Street  
Wausau, WI 54403

PRSR STD  
U.S. POSTAGE  
PAID  
Permit No. 600  
Wausau, WI

\*\*\*ECRWSS\*\*\*

## POSTAL PATRON

### Mayor

Robert B. Mielke  
715-261-6800  
315 S. 8th Avenue  
Robert.mielke@ci.wausau.wi.us



### City of Wausau Alderpersons

#### District 1

Patrick Peckham  
1618 Emerson Street  
715-845-1396  
Patrick.peckham@ci.wausau.wi.us



#### District 2

Romey Wagner  
3500 Golf View Drive  
715-848-5506  
Romey.wagner@ci.wausau.wi.us



#### District 3

David Nutting  
534 S. 1st Avenue  
715-842-2589  
David.nutting@ci.wausau.wi.us



#### District 4

Tom Neal  
916 Hamilton Street  
715-573-6042  
tom.neal@ci.wausau.wi.us



#### District 5

Gary Gisselman  
319 Park Avenue  
715-848-5160  
Gary.gisselman@ci.wausau.wi.us



#### District 6

Becky McElhane  
3839 Woodland Ridge Rd.  
715-581-3762  
Becky.mcelhane@ci.wausau.wi.us



#### District 7

Lisa Rasmussen  
1310 Crescent Drive  
715-675-4872  
Lisa.rasmussen2@ci.wausau.wi.us



#### District 8

Karen Kellbach  
502 Knox Street  
715-675-2694  
Karen.kellbach@ci.wausau.wi.us



#### District 9

Joe Gehin  
3400 Springdale Avenue  
715-842-1028  
Joe.gehin@ci.wausau.wi.us



#### District 10

Sherry Abitz  
1201 S. 7th Avenue  
715-843-0990  
Sherry.abitz@co.marathon.wi.us



#### District 11

Dennis Smith  
3516 Polzer Drive  
715-573-7994  
Dennis.smith@ci.wausau.wi.us



# Bike to Work with the Mayor

**7:45 am** (ride begins)

**Monday, May 15, 2017**

**Start: Marathon Park-Exhibition Building**

**End: Wausau City Hall**

**Ride leaders will be at each starting location to ride with the group to Marathon Park to meet up with the Mayor!**

### Other Starting Locations

**(Riders will meet at 7:15am & ride to Marathon Park):**

- **John Marshall School**, 1918 Lamont St, Wausau
- **Gilbert Park**, 3000 N. 6th St, Wausau
- **Schofield Park**, 606 E. Randolph St, Wausau

**Free grab-n-go breakfast at City Hall!**

**\*Ride will occur rain or shine!**

**\*Check City of Wausau Government Facebook Page for updates regarding inclement weather!**



For more information, please contact 715-261-1935



inside this issue

**Private Wells**

**Annual Hydrant Flushing to Begin May 15th**

**Deferment Plans Available**

**Water Works to Implement Uni-Directional Flushing Program**

**Call Diggers Hotline Before You Dig**

**Spring Watermain Flushing Schedule**

**City of Wausau Comprehensive Plan**

**Metro Ride Detour**

## Private Wells

Private water wells in the City of Wausau are required to be inspected, pass a bacteriological water test (to ensure that there is no coliform or e-coli bacteria present), and be permitted. Permits are good for a period of five years. Wells that are not operable or not up to code will be required to be repaired or abandoned. Wausau Water Works will be sending letters shortly to property owners who have a permit that will be expiring, or has an expired permit. As a private well is a source of cross contamination of our public water system, failure to obtain a permit or to abandon a faulty well could result in disconnection of your water service and/or fines. We will also be sending letters to property owners in areas where wells were known to exist at one time to verify if a well exists on the property. The Wisconsin DNR offers income dependent grants which could help cover the cost of abandonment. Wausau Water Works also offers a deferment plan to assist in the cost of well abandonment. If you have a private well or would like more information on well abandonment or the grant or deferment programs please contact our office at 715-261-7265. Home owners are responsible for the inspection and sampling costs. Current cost for a well permit is \$100.00.

## Annual Hydrant Flushing to Begin May 15th

Water utility employees will begin flushing fire hydrants at 7:30 a.m. on Monday morning, May 15, 2017, as part of our annual maintenance program. Flushing accomplishes two tasks; first, it cleans the mains of mineral buildup, and secondly, it ensures that all hydrants are in good operating order. Flushing will be performed during the daytime hours from 7:30 a.m. until about 3:00 p.m.

This process takes about three weeks to complete, during which time over 1600 hydrants will be flushed. All flushing is performed during daylight hours to improve safety for our employees as well as being able to ensure that hydrants are being adequately flushed.





## Deferment Plans Available

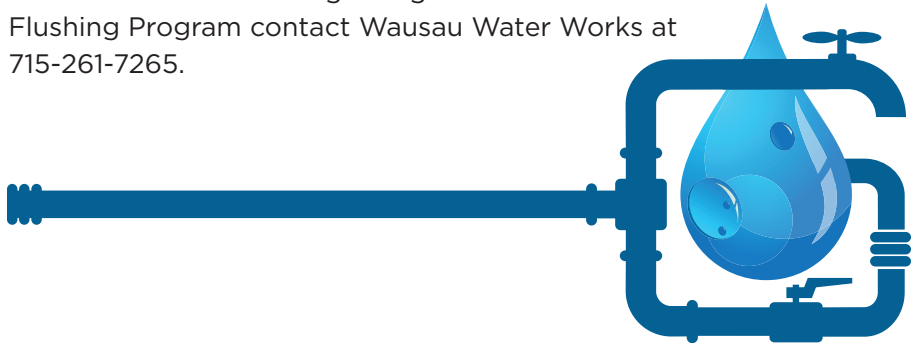
Wausau Water Works knows that sometimes it can be difficult to come up with the money to make repairs to leaking service lines, replace old lead service lines or abandon old wells. To assist homeowners, we have developed a deferment plan to assist with these types of expenses. The homeowner will need to sign an agreement with Wausau Water Works then the utility will pay the plumber (that the homeowner has hired) for the work that has been performed and defer the cost of repairs to be applied to the property taxes as a special assessment. More information on this deferment program may be obtained by calling 715-261-7265.

## Water Works to Implement Uni-Directional Flushing Program

To enhance water quality and help alleviate lead issues, the Utility will be resuming its Uni-Directional flushing program. The idea behind this type of flushing is to do a comprehensive flushing starting in a particular section of the city and working our way out to the far edges, flushing the water out through hydrants as we go. This systematic, high-velocity program removes settled particles and cleans underground water mains thereby enhancing the water quality.

Wausau Water Works will be sending postcards to residents as this specialized flushing is done in neighborhoods. You will be recommended not to run water while this flushing is taking place, nor should you do laundry, especially avoiding the use of bleach during this time.

For more information regarding the Uni-Directional Flushing Program contact Wausau Water Works at 715-261-7265.



## Call Diggers Hotline Before You Dig

Construction projects such as installing decks, fences and tree planting are another sign of spring. Homeowners are reminded to contact Diggers Hotline before you dig by simply dialing 811 from any land line or cell phone. Or, you can place an online request at [www.diggershotline.com](http://www.diggershotline.com).

Homeowners are also reminded that they must allow 3 business days (not including the day the request is called in) for all their utilities to be located before they dig, and should plan their projects accordingly. There is no cost to the homeowner to contact Diggers Hotline, who will then inform all utilities with buried facilities, such as water, sewer, gas and electric utilities, telephone and cable companies of your intentions to dig in a specific area.

Water lines are marked in the street and up to the curb stop (shut off valve) which is typically located in the boulevard area. Water pipes beyond that point and into the house were installed privately and the utility does not have any record of where they are located.



**Know what's below.  
Call before you dig.**

# Spring Watermain Flushing Schedule

Utility crews will flush watermains through the operation of hydrants during daytime hours from **7:30 a.m. until 3:00 p.m.** You may want to draw a supply of water prior to your area being flushed. Please be aware that adjacent neighborhoods to the area being flushed may experience dirty water for short periods of time.

**Avoid water use during the scheduled flush, especially for laundry purposes.** It is particularly important to NOT use bleach in your laundry as it may stain your clothing. It is also suggested that you bypass water softeners during this time. Please also be aware that some homeowners may experience very low pressure during the flushing process.

## Flushing Schedule

### West Side

**Monday, May 15** - West Wausau Avenue north to City limits

**Tuesday, May 16** - Wausau Avenue south to Bridge Street and Pinecrest area to Stettin Drive, west to 48<sup>th</sup> Avenue and north to Hilltop Avenue.

**Wednesday May 17** - Oak Street south to Sherman Street

**Thursday, May 18** - Rosecrans Street south to City limits

### East Side

**Monday, May 22** - Steuben Street north to Sylvan Street; 6th Street to City limits (Evergreen Road), Riverview Court and Riverview Drive

**Tuesday, May 23** - Hamilton Street south to Forest Street

**Wednesday, May 24** - Kickbusch Street south to Town Line Road and Northwestern Avenue

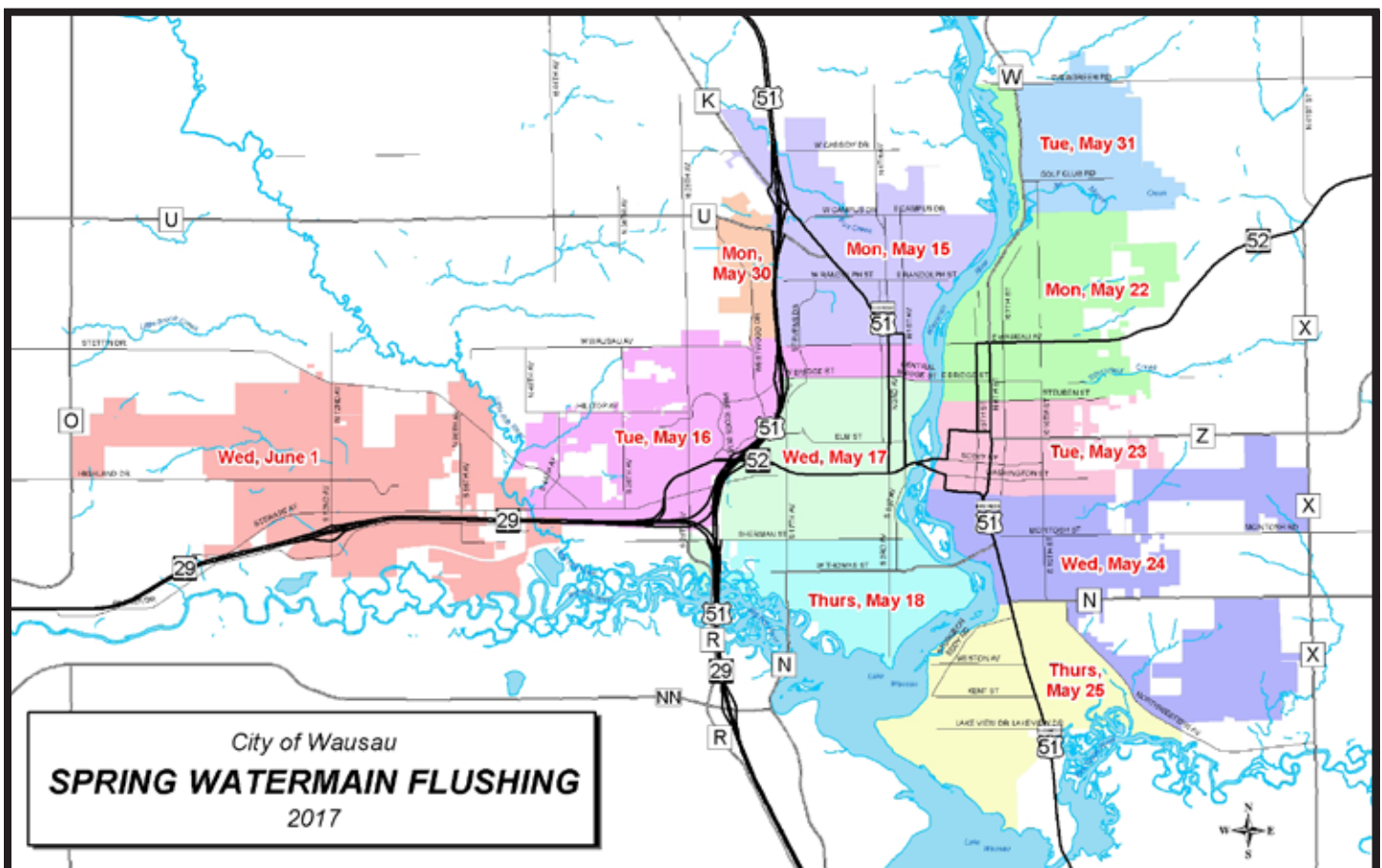
**Thursday, May 25** - Town Line Road south to City limits

### Other Areas

**Monday, May 30** - high pressure zone by 28th Avenue Reservoir, Highway U

**Tuesday, May 31** - Riverview area

**Wednesday, June 1** - 56th Avenue west to City limits



# City of Wausau Comprehensive Plan

The city's Comprehensive Plan has been updated and is able to view online at: [www.ci.wausau.wi.us/Departments/Planning/Plans/ComprehensivePlan.aspx](http://www.ci.wausau.wi.us/Departments/Planning/Plans/ComprehensivePlan.aspx)

Comprehensive plans take a long-term view and set broad policies for improving communities in various ways. The goals identified in the City of Wausau Comprehensive Plan serve as an overall policy guide for the city. The goals from the current plan are:

- **Natural Resources Goal:** The City of Wausau will continue to protect and enhance the quality of significant natural resources.
- **Cultural Resources Goal:** The City of Wausau will continue to preserve historic sites and support cultural opportunities for community residents.
- **Housing Goal:** The City of Wausau will continue to offer equal access to quality, affordable housing.
- **Utilities and Community Facilities Goal:** The City of Wausau will

provide high quality utilities and community facilities to all residents in a cost-effective and cost-efficient manner.

- **Transportation Goal:** The City of Wausau will provide a safe and efficient transportation network that will facilitate the movement of people and goods throughout the community.
- **Economic Development Goal:** The City of Wausau has a diverse economy that is a place of opportunities where people and businesses can grow and be successful.
- **Downtown Goal:** The City of Wausau will continue to strengthen downtown Wausau as the heart of the City and surrounding region.
- **Land Use Goal:** The City of Wausau

will balance the land use needs of the community to maximize the land's potential.

- **Intergovernmental Cooperation Goal:** The City of Wausau will continue to strengthen and expand its cooperative activities with all levels of government to improve the provision of public services and facilities.

In addition to identifying overall goals, the Comprehensive Plan also contains objectives, action steps, and initiatives to help achieve the goals. A few of the initiatives identified in the plan are: an updated historical survey of the city; an inventory of properties for redevelopment; a community health assessment; a zoning code update; a pedestrian inventory and action plan; and continued redevelopment of downtown and riverfront properties.

## Metro Ride Detour

With the reconstruction of Thomas Street this summer, the City of Wausau Metro-Ride Route J will be detoured as outlined below:

**METRO Ride**

**CONSTRUCTION DETOUR**

**Route J – Thomas Street**

**Summer 2017**

Phone: 715-842-9287  
 Email: [metrорide@ci.wausau.wi.us](mailto:metrорide@ci.wausau.wi.us)  
 Website: <http://metrорide.ci.wausau.wi.us>

- - - Street Closed
- ⊗ Bus Stop Closed
- Bus Route
- Bus Stop