



FALL 2018

# works for you!

inside this issue.

- Yard Waste Site Hours**
- Downtown Hanging Decorations**
- 2018 Leaf Collection Schedule**
- 2018 Leaf Collection Map**
- 2019 Recycling Calendar**
- Construction/Remodeling Projects**
- Property Maintenance Reminders**
- Large Item Drop-Off Clean It Up, Wausau**
- Neighborly Reminders**
- Sharing Wausau's Wausome Story**
- MCDEVCO's Fall Progaming**
- River District News**
- Run the Runway 5K**
- Pet Licenses Expire December 31st Each Year**
- Attention Voters**
- Election Poll Workers Wanted**
- Celebrate Fall & Winter With Wausau Events**
- Odd/Even Overnight Parking**
- Capturing the Packers**
- Halloween Hours**
- Birds in Art 2018 Soars**
- City Hall Closed During Holidays**
- Fall & Winter Recreation Programs 2018-2019**

## Mayor's Message

### Greetings to the Residents of Wausau!



This is the last newsletter for 2018...WOW! This year went by quickly! Please save this newsletter as it has a lot of useful information from now until the end of the year.

The fall season is upon us and that means it is budget time for the city. We started the budget process back in late June, with Department Heads submitting their initial 2019 operational budgets and goals and I have met several times with them to prioritize their expenses. I have stressed the importance of keeping expenses in check, while still providing the quality and reliable services that taxpayers want and expect. As of this writing, we are still waiting to hear back from the state as to the financial aids that we will receive through the "shared-revenue" process. As I have stated before, the budget is always a challenge due to different factors, some of which are beyond our control. The 2019 budget is always available for public review on the city website in late October and will then be presented for Public Hearing and then Council approval in November.

One of the expenses that will be incurred will be a new Fire station on the west side of Wausau. The vision and planning for this project has taken a number of years. The City Council was provided a visual presentation at their city council meeting on September 11, 2018. The expected cost of the project has been set at \$4.5 million dollars.

We are also in the midst of plans to update our Wastewater Treatment and Water Utility plants, as well as facilities at our Department of Public Works locations. It is important to ensure that these facilities remain viable for the long term future of our city. The City Council is fully aware of the above plans and knows the important and necessary steps needed to maintain and replace our ageing city infrastructures and facilities.

The fall leaf pick-up up has a "window" that is scheduled to start the last two weeks of October, and then go into the first two weeks of November. The schedule and map are inside this publication. Please remember folks, we live in Wisconsin and experience ever-changing and unpredictable weather during the fall season. The dates shown in this newsletter are subject to change and if they do, we will get the message out quickly, so you can plan and prepare accordingly.

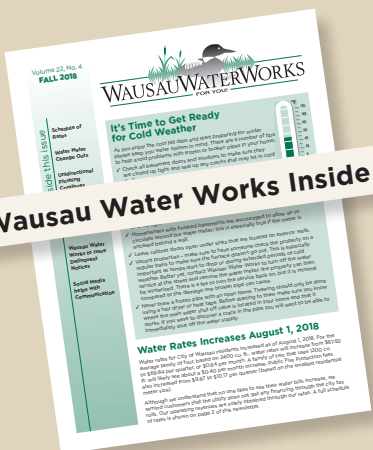
I assure you that throughout the fall and winter seasons, every effort will be made to provide continuous public updates in the media about both the Riverfront development and the Phase #2 process of the Thomas Street project. As soon as we have more information to share on both of these projects, we will keep our residents informed.

During this fall season, get out and enjoy all of the natural beauty that we have in our region. We are truly blessed to live where we do and it's important to appreciate all of the many good and positive things happening in our community!

Though somewhat early, I also want to wish all of you and your families (in whatever way you celebrate) a very Merry Christmas, Happy Hanukkah, Happy Kwanza and for everyone, a very happy and safe New Year-2019!

Please know, I am very accessible to all residents and look forward to receiving constituent input on any and all aspects of our city. Thanks and take care!

Robert B. Mielke-Mayor of the GREAT City of Wausau!



## Yard Waste Site Hours

Monday .....CLOSED  
 Tuesday.....CLOSED  
 Wednesday ..... 9am - 8pm  
 Thursday.....CLOSED  
 Friday..... 9am - 5pm  
 Saturday ..... 9am - 5pm  
 Sunday..... 9am - 5pm

**The site closes permanently for winter on Sunday, November 18, 2018 - 5:00 pm**

The City of Wausau Yard Waste Site is located at the east end of East Chellis Street and is monitored by video surveillance. Citations will be issued to parties who leave yard waste outside the gate of the facility.

Call The Department of Public Works at 261-6960, if you have any questions.

## Downtown Hanging Decorations & Holiday Decoration Schedule

As the City gets ready to move into the fall season and then holiday season we have set the following schedule for hanging decorations over North 3rd Street and in the downtown area.

**October 8-12** - Umbrellas will be taken down and the string lights will be put up in their place.

**November 19-30** - Holiday decorations will be put up and in place.

**January 1-11** - Holiday decorations will be taken down. The string lights over N. 3rd St will remain up until spring of 2019.

**May 2019** - Weather permitting, the string lights over N. 3rd St will be taken down and the umbrellas will be hung to kick off the spring/summer events.

## 2018 Leaf Collection Schedule

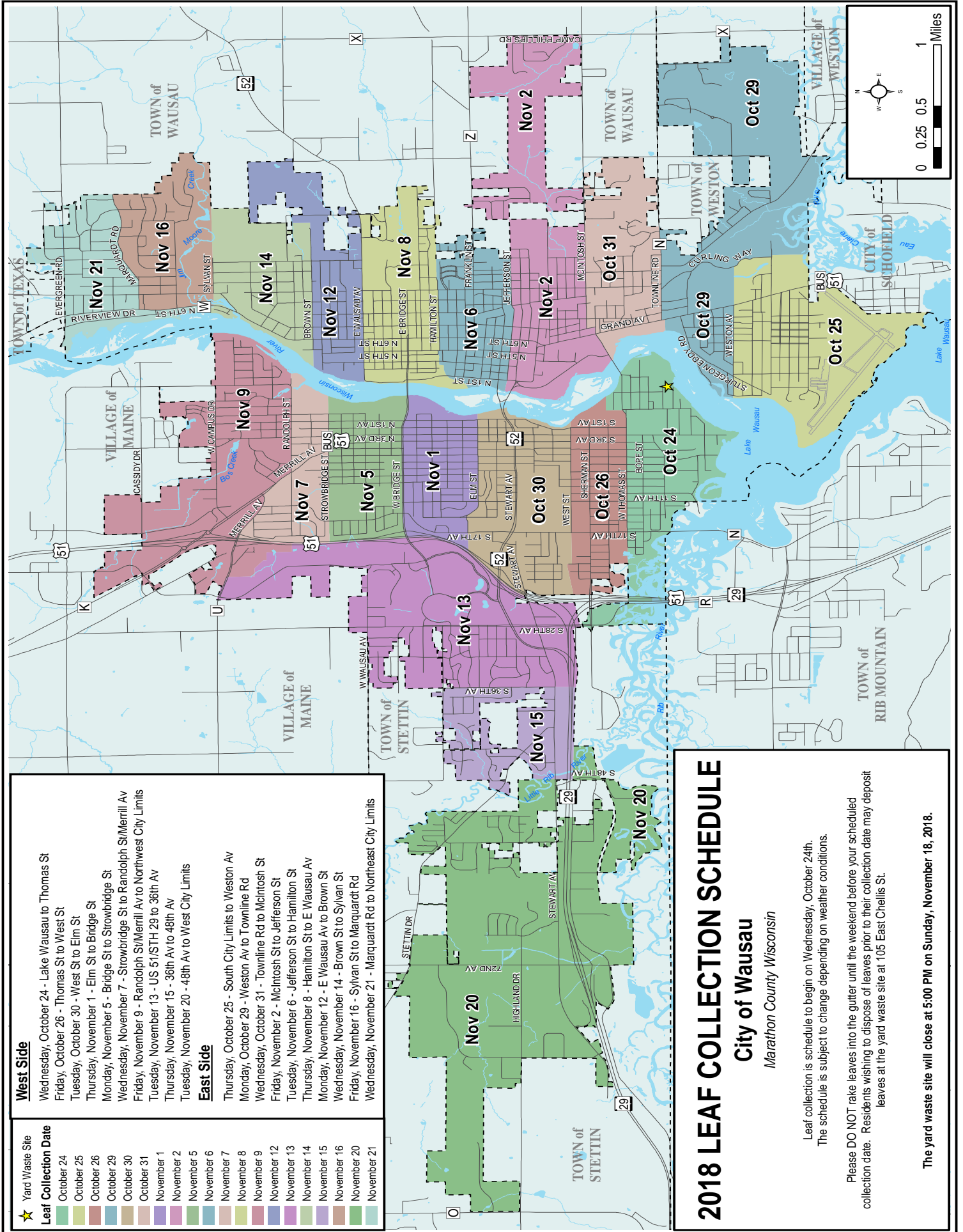
**For 2018 the Department of Public Works will be using equipment to bale leaves as they are collected. Here are some tips to make this process work for everyone!**

- Please rake leaves into the gutter no earlier than the weekend before your scheduled collection date. If leaves are in the street too early they have the possibility of plugging catch basins, causing flooding, washing into the river and creating unsafe conditions for motorcyclists and bicyclists.
- Leaves should be raked into a row along the curb, not in piles.
- The equipment used cannot collect any other debris such as sticks, root balls and other plant material. Please make sure there are only leaves in your gutter or the crew may have to skip the property.
- In order to stay on schedule crews cannot return to an area once it has been collected (if collection progresses faster than anticipated crews will return on your scheduled date). If you missed your pick up date, leaves can be brought to the yard waste site at 105 East Chellis Street. The yard waste site will close at 5:00 PM on Sunday, November 18, 2018.
- This process is dependent on weather which is often unpredictable at this time of year. Any delays will be communicated on our Facebook Page - [City of Wausau Public Works and Utilities](#)
- An interactive map can be found online at The City of Wausau [website](#)
- Any questions should be directed to the Department of Public Works at 715-261-6960 or via Facebook.

**Please help us do our job as efficiently as possible by following these guidelines!**

OCTOBER						
Sun	Mon	Tue	Wed	Thu	Fri	Sat
21	22	23	24 <b>WEST</b> Lake Wausau to Thomas St	25 <b>EAST</b> South City Limits to Weston Ave	26 <b>WEST</b> Thomas St to West St	27
28	29 <b>EAST</b> Weston Ave to Townline Rd	30 <b>WEST</b> West St to Elm St	31 <b>EAST</b> Townline Rd to McIntosh St			

NOVEMBER						
				1 <b>WEST</b> Elm St to Bridge St	2 <b>EAST</b> McIntosh St to Jefferson St	3
4	5 <b>WEST</b> Bridge St to Stowbridge St	6 <b>EAST</b> Jefferson St to Hamilton St	7 <b>WEST</b> Stowbridge St to Randolph St/Merrill Ave	8 <b>EAST</b> Hamilton St to E Wausau Ave	9 <b>WEST</b> Randolph St/ Merrill Ave to Northwest City Limits	10
11	12 <b>EAST</b> E Wausau Ave to Brown St	13 <b>WEST</b> US 51/STH 29 to 36 <sup>th</sup> Ave	14 <b>EAST</b> Brown St to Sylvan St	15 <b>WEST</b> 36 <sup>th</sup> Ave to 48 <sup>th</sup> Ave	16 <b>EAST</b> Sylvan St to Marquardt Rd	17
18	19	20 <b>WEST</b> 48 <sup>th</sup> Ave to West City Limits	21 <b>EAST</b> Marquardt Rd to Northeast City Limits	22	23	24



**West Side**

- Wednesday, October 24 - Lake Wausau to Thomas St
- Friday, October 26 - Thomas St to West St
- Tuesday, October 30 - West St to Elm St
- Thursday, November 1 - Elm St to Bridge St
- Monday, November 5 - Bridge St to Strowbridge St
- Wednesday, November 7 - Strowbridge St to Randolph St/Merrill Av
- Friday, November 9 - Randolph St/Merrill Av to Northwest City Limits
- Tuesday, November 13 - US 51/STH 29 to 36th Av
- Thursday, November 15 - 36th Av to 48th Av
- Tuesday, November 20 - 48th Av to West City Limits

**East Side**

- Thursday, October 25 - South City Limits to Weston Av
- Monday, October 29 - Weston Av to Townline Rd
- Wednesday, October 31 - Townline Rd to McIntosh St
- Friday, November 2 - McIntosh St to Jefferson St
- Tuesday, November 6 - Jefferson St to Hamilton St
- Thursday, November 8 - Hamilton St to E Wausau Av
- Monday, November 12 - E Wausau Av to Brown St
- Wednesday, November 14 - Brown St to Sylvan St
- Friday, November 16 - Sylvan St to Marquardt Rd
- Wednesday, November 21 - Marquardt Rd to Northeast City Limits

★ Yard Waste Site

**Leaf Collection Date**

- October 24
- October 25
- October 26
- October 29
- October 30
- October 31
- November 1
- November 2
- November 5
- November 6
- November 7
- November 8
- November 9
- November 12
- November 13
- November 14
- November 15
- November 16
- November 20
- November 21

**2018 LEAF COLLECTION SCHEDULE**

**City of Wausau**  
Marathon County Wisconsin

Leaf collection is schedule to begin on Wednesday, October 24th.  
The schedule is subject to change depending on weather conditions.

Please DO NOT rake leaves into the gutter until the weekend before your scheduled collection date. Residents wishing to dispose of leaves prior to their collection date may deposit leaves at the yard waste site at 105 East Chellis St.

The yard waste site will close at 5:00 PM on Sunday, November 18, 2018.

# 2019 Recycling Collection Calendar

Refer to the table and the calendar to determine your recycling and garbage pick-up day. If you have any questions as to whether you live in a blue or yellow collection area, call City Hall at 261-6500. Recycling bins should be set out with garbage containers between the hours of 3:00 pm the day prior to collection day and should be removed from the curbside area by 11:00 a.m. the day after pick-up. **Keep this schedule for future reference and remember the holiday schedule of a "day delay" pick-up.**

<b>West Side of Wisconsin River:</b>		
North of W. Wausau Ave.	Monday	Blue
North of Elm St., South of W. Wausau Ave. & East of USH 51	Monday	Yellow
South of Elm St. & North of Stewart Ave. including entire area West of USH 51	Tuesday	Blue
South of Stewart Ave. & North of Thomas St.	Tuesday	Yellow
South of Thomas St.	Wednesday	Blue

<b>East Side of Wisconsin River:</b>		
North of Marquardt Rd. & East of railroad tracks	Wednesday	Blue
North of Nina Ave. & South of Marquardt Rd. including homes West of the railroad tracks to Evergreen Rd.	Wednesday	Yellow
South of Nina Ave. & North of Hamilton St.	Thursday	Blue
South of Hamilton St. & North of Kickbusch St.	Thursday	Yellow
South of Kickbusch St., North of McDonald St. & East of Northwestern Rd.	Friday	Blue
South of McDonald St. & entire area West of Northwestern Rd.	Friday	Yellow

## 2019 Recycling Calendar

JANUARY						
S	M	T	W	T	F	S
		1	2	3	4	5
6	7	8	9	10	11	12
13	14	15	16	17	18	19
20	21	22	23	24	25	26
27	28	29	30	31		

FEBRUARY						
S	M	T	W	T	F	S
					1	2
3	4	5	6	7	8	9
10	11	12	13	14	15	16
17	18	19	20	21	22	23
24	25	26	27	28		

MARCH						
S	M	T	W	T	F	S
					1	2
3	4	5	6	7	8	9
10	11	12	13	14	15	16
17	18	19	20	21	22	23
24	25	26	27	28	29	30
31						

APRIL						
S	M	T	W	T	F	S
	1	2	3	4	5	6
7	8	9	10	11	12	13
14	15	16	17	18	19	20
21	22	23	24	25	26	27
28	29	30				

MAY						
S	M	T	W	T	F	S
			1	2	3	4
5	6	7	8	9	10	11
12	13	14	15	16	17	18
19	20	21	22	23	24	25
26	27	28	29	30	31	

JUNE						
S	M	T	W	T	F	S
						1
2	3	4	5	6	7	8
9	10	11	12	13	14	15
16	17	18	19	20	21	22
23	24	25	26	27	28	29
30						

JULY						
S	M	T	W	T	F	S
	1	2	3	4	5	6
7	8	9	10	11	12	13
14	15	16	17	18	19	20
21	22	23	24	25	26	27
28	29	30	31			

AUGUST						
S	M	T	W	T	F	S
				1	2	3
4	5	6	7	8	9	10
11	12	13	14	15	16	17
18	19	20	21	22	23	24
25	26	27	28	29	30	31

SEPTEMBER						
S	M	T	W	T	F	S
1	2	3	4	5	6	7
8	9	10	11	12	13	14
15	16	17	18	19	20	21
22	23	24	25	26	27	28
29	30					

OCTOBER						
S	M	T	W	T	F	S
		1	2	3	4	5
6	7	8	9	10	11	12
13	14	15	16	17	18	19
20	21	22	23	24	25	26
27	28	29	30	31		

NOVEMBER						
S	M	T	W	T	F	S
					1	2
3	4	5	6	7	8	9
10	11	12	13	14	15	16
17	18	19	20	21	22	23
24	25	26	27	28	29	30

DECEMBER						
S	M	T	W	T	F	S
1	2	3	4	5	6	7
8	9	10	11	12	13	14
15	16	17	18	19	20	21
22	23	24	25	26	27	28
29	30	31				

# Inspections Department

## Construction/ Remodeling Projects

If you are planning any construction or remodeling projects, we would like to remind you that permits are required for most projects in the City of Wausau, such as:

- New construction or an addition to a building.
- Alterations/remodeling (kitchen cabinets, drywalling, etc.).
- Construction of a detached garage, lean-to, storage building, gazebo, or any additions or alterations thereto.
- Construction or reconstruction of a deck, stoop, porch or ramp.
- Residing of a building. (Make sure house numbers get reinstalled upon completion.)
- Roofs: A building permit is required for the installation/replacement of all roofing in the City including reshingling.
- Old shingles must be removed, unless the Building Inspector approves installation over one existing layer.
- Metal roofs are NOT allowed on residential buildings in the City unless they meet certain guidelines and are approved on an individual case-by-case basis by the City. (Metal roofs using corrugated panels or exposed fasteners will not be approved for use on residential buildings.)
- Construction, replacement or expansion of a fence. The purpose for requiring permits for fences is to ensure the location, height, materials and maintenance of them, so they properly comply with City regulations and in order to prevent the creation of nuisances.
- Demolition of a building.
- Separate permits are required for any plumbing or electrical work.
- A more complete list of permit requirements is available on-line at: [www.ci.wausau.wi.us/Departments/Inspections/ResidentialPermitRequirements.aspx](http://www.ci.wausau.wi.us/Departments/Inspections/ResidentialPermitRequirements.aspx)

Permits are required not only to ensure your project meets City zoning regulations and complies with City and State codes, but also lets us assist you in achieving a project that is safe and structurally sound.

The inspectors are typically in the office between 8:00-9:00 AM and 12:30-1:30 PM, Monday through Friday, to review plans, issue permits and answer questions. The remainder of the work day, they conduct on-site inspections. If these times are not convenient for you, contact the Division of Inspection, Zoning and Electrical Systems at 715.261.6780, and they are generally able to make other arrangements for you to meet with their staff.

## Property Maintenance Reminders

The City of Wausau has ordinances that are designed to protect the public's health and safety, and to preserve the appearance of neighborhoods. For the most part, City residents take great pride in maintaining their property in an aesthetically-pleasing condition, and comply with City ordinances. Following are the most common violations observed by City Inspectors:

### Signs:

- The City of Wausau has received inquiries in regard to the allowance of signs with political messages. At this time, the City of Wausau is in the process of reviewing the current zoning ordinance codes in comparison to recent case law. The requirements for sign placement are being restructured and enforcement of the current codes is not being regulated during this process other than insuring that signs are not placed in the public right-of-ways or causing any hindrance to traffic site lines.
- Rummage sale, garage sale, real estate, advertising or other such signs cannot be placed on boulevards, other public or attached to public utility poles

### Exterior Property Areas:

- Shall be maintained in a clean and sanitary condition, free from any accumulation of items, garbage, debris, yard waste.
- Dog/animal excreta must be picked up on a daily basis, so as to minimize health hazards.
- Furniture, not intended for outdoor use, is not allowed on yards or open porches.

### Vehicles:

- Must be parked on established driveway/parking areas that are hard-surfaced.
- Parking on the grass is not allowed.
- Vehicles that are unregistered/unlicensed, inoperable, abandoned, or in any state of major disassembly, disrepair, or undergoing overhaul are not allowed to be parked on residential properties.
- Motor vehicle repair is not allowed on residential properties.

### Trash and Recyclable Carts:

- Can be set out for collection after 3:00 PM on the day before pickup.
- All carts must be removed from the curb-side/boulevard area by 11:00 AM the day after pickup.
- Between pickups, trash and recyclable carts should be stored in a garage or shed, or kept behind the front of the house.

### Recreational Equipment:

- Motor homes, camping and travel trailers, boats, boat trailers, snowmobiles, ATV's, utility trailers, etc. cannot be parked or stored in any required front yard or corner side yard, except for on a designated driveway which meets the City's hard-surfacing requirements.
- Equipment or trailers that are longer than 30' (measured from back bumper to tongue) must be parked within enclosed structures.

If you have any questions or wish to report any violations, call the Division of Inspection, Zoning and Electrical Systems at 715.261.6780.

# Clean It Up, Wausau

City Of Wausau

## Large Item Drop-Off Clean It Up, Wausau

**Friday & Saturday,  
September 28 & 29, 2018 • 9am - 5pm**

East end of E. Chellis Street near the Yard Waste Site



The Mayor's N2N (Neighbor to Neighbor) Committee is partnering with local non-profit organization in another "Clean It Up, Wausau" event for Wausau residents to properly and safely dispose of unwanted items. **Items can be dropped off at 105 E. Chellis Street.** Follow the signs and please be prepared to **show proof of CITY OF WAUSAU residency!** If you have questions, please call Public Works at 715-261-6960 or the Mayor's Office at 715-261-6800.

### UNACCEPTABLE ITEMS

To dispose of these or other items, please call the Marathon County Solid Waste and Recycling Information line at 1-877-270-3989.

- Light Bulbs, Smoke/CO Detectors, Batteries
- Paint, Chemicals
- Remodeling waste-insulation, fiberglass
- Medication - Drop off at local Police Department
- Roofing material
- Waste oil, antifreeze, lead
- Fertilizers, Pesticides, Herbicides
- Compressed Gas Cylinders
- Explosives

ITEMS ACCEPTED	FEE
<b>ALL ELECTRONICS:</b>	
All Computers, Faxes, Printers, cell phones, TV's, mice, keyboards, anything with a cord	.40/lb.
TV's with broken screens or cracked housing	.60/lb.
TV's with exposed picture tubes	.60/lb.
<b>TIRES:</b>	
Up to 20"	\$5.00
Over 20"	\$10.00
<b>APPLIANCES:</b>	
Microwaves	FREE
Dehumidifiers, Air conditioners	\$10.00
Refrigerators, Freezers	\$10.00
Snow blowers (gas, oil removed)	FREE
Lawnmowers (gas, oil removed)	FREE
Stoves	FREE
Washers, Dryers, Dishwashers	FREE
Scrap Metal	FREE
<b>FURNITURE:</b>	
Mattress/Box Springs	FREE
Tables, Chairs, Sofas	FREE

### \*\*ALSO ACCEPTING GENTLY USED MEDICAL EQUIPMENT

We are partnering with Good News Project and their HEALTH EQUIPMENT LENDING PROGRAM. The H.E.L.P. closet accepts donations of new and used medical equipment, does overall safety checks, and sanitizes those items to provide short-term loans to people in the community. Donations of unused incontinence products, (packages opened or unopened) are also accepted. Please drop off items such as:

- Knee walker/ scooters
- Bath/shower chairs
- Wheelchairs
- Commodes
- Toilet Safety Rails
- Canes
- Rolling Walkers
- Bed Rails

Good News Project (1106 Fifth St, Wausau) during operating hours (M-F 9-5) to find the equipment in need.

# NEIGHBORLY REMINDERS

### Animal Control

Animals running at large are prohibited. Animal owners shall not allow their animals to disturb any person by continuous barking or howling. Municipal ordinance prohibits owners from allowing dogs and cats to run at large. Pet owners are also responsible for picking up any pet excrement left by their pets on another's property. A forfeiture fee from a minimum of \$75.00 to a maximum of \$275.00 can be imposed per violation. Persons disturbed by an animal should call the city police department at 715-261-7800 **at the time of the disturbance.**

Please note: the pet limit is two dogs and/or three cats per household within the City of Wausau, unless your household has the appropriate Pet Fancier Permit. With questions regarding animals, please contact the Animal Control Officer at 715-261-7842

### Illegal Dumping of Garbage, Leaves or Yard Waste

Please remember that illegal dumping of garbage in city parks OR the blowing and/or raking of leaves and yard debris to our waterways, rivers or sewers can impose a forfeiture fee from a minimum of \$10 to a maximum of \$1,000 per violation. The City offers leaf baling pick-up each fall season and we encourage our residents to take advantage of this service. However, please don't rake them into the street until the day before pick-up. It's been noticed that a number of leaves and yard waste is clogging our rivers and sewers which creates an environmental hazard. Please be a good citizen and a responsible homeowner.

**Mission Statement...** In response to our citizens, we will provide services in the most effective manner in order to promote and enhance our living environment. Plan and encourage positive growth. Promote a positive community image by encouraging citizen involvement and civic pride.

# Wausome Story Campaign



## Sharing Wausau's Wausome Story

Earlier this year, the city of Wausau launched the My Wausome Story campaign, a project highlighting perspectives from people living, working and growing businesses right here in Wausau. Here's an update on the campaign:

Since May, we've released five feature stories. A sample of these stories includes:

- Wausau resident Ryan Gallagher's commitment to building a business that is becoming an internationally recognized force for good right here in Wausau.
- How Wisconsin Woodchucks' owner Mark Macdonald's labor of love to renovate Athletic Park in turn ended up transforming an entire east side neighborhood.
- How her experiences as a child refugee shaped Wausau resident MaiGer Moua's drive to make positive impacts on her community through her role at the United Way of Marathon County.

Sharing these stories and wausome messages is important. We've focused on the local level by posting each story on the city's website at [www.wausome.com](http://www.wausome.com). Local media and other organizations have also shared the stories, in addition to our own efforts on social media. We also wanted these positive Wausau messages to reach new audiences outside of our community so the campaign has focused on targeting residents and entrepreneurs in other cities such as Madison, Milwaukee, and Minneapolis.

As we look to the fall season, we are excited to have students from Wausau West and DC Everest High Schools join the campaign. Students in select marketing and business education classes will be learning about the project

and then creating their own My Wausome Stories. We hope to share a few of these stories on our website as well as on the Wausome Facebook page.

Lastly, we've had seven social media volunteer ambassadors sharing their wausome experiences on the Wausome Facebook page. Throughout the summer they've shared live videos and photos from many of the events that Wausau residents love. They'll continue to post about their wausome experiences throughout the fall and winter. To follow them, find Wausome on Facebook.

Additional stories will be released monthly through the end of the year. To read the stories and learn more about the campaign, visit [www.wausome.com](http://www.wausome.com). Find articles and posts using #wausome.



## MCDEVCO's Fall Progamring

As summer turns to fall and life changes with a new season, MCDEVCO offers unique educational opportunities for entrepreneurs and small business owners.

**General entrepreneurs programs that teach skills for long-term success:**

**September 25, 2018, October 2, 2018, and October 9, 2018** Beginners Excel workshop SERIES from 6:00pm - 7:30pm at MCDEVCO by Trevor Maki from Wipfli. MCDEVCO has four laptops for the classes if you do not have one to bring. Class is limited to eight (8) people for the three weeks series. Laptop is required for the workshop.

**October 30, 2018 and November 13, 2018** Amy Plier will be teaching a two-week workshop series on How to Write Your Business Plan from 6:00pm to 7:30pm.

**November 12, 2018 and December 3, 2018** Social Media series from 6:00pm to 7:30pm by Chris Nelson-Jeffers from

Breckshire LLC. Topic covered will include online advertising/reviews, SEO and social media for entrepreneurs and small businesses.

*October is National Women's Small Business Month and MCDEVCO will be celebrating Women Entrepreneurs with the following events. Robert B. Mielke, Mayor, City of Wausau will proclaim October National Women's Small Business Month.*

**October 1, 2018** will be Cocktails and Conversations at Timekeepers Distillery located in the historic Hiawatha Line train station at 720 Grant Street, Wausau from 5:30pm-7:30pm. Dan and Kimm will be creating a new cocktail in honor of Women Entrepreneurs. Rachel Funk-Johnson will be our speaker for the night as she talks about Breaking the Rules for women entrepreneurs! Preregistration

is required as space is limited. The program is free and beverages can be purchased individually.

**October 23, 2018** Kirsten Holmson founder/owner of Community Soul Yoga in Wausau, WI will lead a round table discussion for Women Entrepreneurs from 6:00pm - 7:30pm at the Wausau Museum of Contemporary Art located at 309 McClellan St, Wausau, WI 54403. Afterwards you will have an opportunity to tour of the museum.

All programs unless noted are held at MCDEVCO. To get up-to-date information on our programs or to pre-register for a program, email us at [info@mcdevco.org](mailto:info@mcdevco.org), or call us at 715.298.0084.



**We hope to see YOU at one of our programs!**

3rd Annual  
**Run the Runway 5K**  
family friendly course!  
Only wheels permitted are strollers & walkers! No pets please.

**Saturday, October 6, 2018**  
**Wausau Downtown Airport**

3:00 P.M. Start of Race  
Packet Pickup: Saturday 11:00-2:30pm

Online registration: [www.tandhtiming.com](http://www.tandhtiming.com)  
Registration before September 15 includes free t-shirt  
\$25 Adults, \$15 Kids under 12.  
No t-shirt guaranteed after September 15

Proceeds from this event will go towards aviation education and projects to enhance our community

**Southeast Side Neighborhood thanks these sponsors:**



## River District News



- State of the River District Dinner** (Sept. 25th 6-9pm): Join Wausau River District in a celebratory recap of the year and a look forward to projects ahead. Hosted at the Jefferson Street Inn with live music. A great chance to mingle with local business owners, River District stakeholders and learn about the progress being made in the heart of our city.
- Exhibitour** (Oct. 5th 5-8:30pm): Join us as we welcome back this well-known event! This ticketed event will feature local art, local businesses, and WINE! Purchase a ticket in advance on our website [WausauRiverDistrict.org](http://WausauRiverDistrict.org) or at the event. Enjoy live music and art as you stroll through downtown Wausau and visit our retail stores that have transformed into art galleries.
- Downtown Wausau Dining Week** (Oct. 15-19): Downtown Wausau Dining Weeks is Wausau's favorite feast! Participating restaurants will feature a three-course price fixed menu for lunch and dinner, allowing you to experience the many wonderful tastes of our downtown eateries!
- Holiday Open House** (Nov. 2 -5) Prepare for the holidays at Holiday Open House. This event features the annual Christmas on First Open House on the near west side and the Downtown Holiday Open House in downtown Wausau. Enjoy in-store specials, refreshments and great gift ideas. Take the free trolley over the river to experience both events!
- Small Business Saturday** (Nov. 24): Celebrate local small businesses with great after-Thanksgiving deals throughout Wausau's River District. Join the event on Facebook.



## Pet Licenses Expire December 31st Each Year

Pet licenses are required for all dogs and cats more than four months of age on January 1st of any year, or four months of age within the license year, regardless of whether or not your pet goes outside.

Proof of rabies vaccination, expiration date and proof of spay or neuter is required at the time of licensing. There is an \$8.00 discount on each license if your pet is microchipped, proof is required.

The license can be obtained in a variety of ways:

- In person at Customer Service at City Hall. Please bring the necessary proof of spaying or neutering, microchipping and rabies vaccination.

- Or mail a payment along with required documents to City Hall, 407 Grant Street, Wausau, WI 54403
- You can also process the license application online by uploading the required documents at <https://evolveportal.ci.wausau.wi.us/?portal=clerk>.

Licensing fees for the 2019 licensing year are: an unaltered dog or cat is \$60.00 per year; an altered dog or cat is \$18.00 per year. All licenses are given an \$8.00 discount if the pet is microchipped. Proof of microchipping is required for discount.

To avoid a late fee, all dog and cat licenses are due no later than March 31st of every year, within thirty days of

acquiring ownership of a dog or cat, or when the pet reaches four months of age. **A late fee of double the regular license fee, in addition to the required license fee is imposed if the license is obtained after March 31st.** The forfeiture for NOT **having a current pet license is \$187.00.**

**Thank you for being a responsible pet owner.**



# Attention Voters

## IS MY VOTER REGISTRATION UP TO DATE?

Registering to vote or updating your voter information PRIOR to Election Day will speed up the process for you and fellow voters. You may register with the Clerk/Customer Service Office at City Hall 407 Grant Street, Monday through Friday 8:00 am – 4:30 pm. Don't forget to bring proof of residency. You can also check the accuracy of your voter registration and REGISTER ONLINE by going to "My Vote Wisconsin" website at <http://myvote.wi.gov>. This site also has valuable information such as poll site location and what is on the ballot. Check it out!

## EARLY VOTING / ABSENTEE VOTING

Beat the long lines on Election Day! Are you traveling to a warmer climate? There are several options to vote absentee before the General Election. You can download the absentee request form from the City's website at <http://www.ci.wausau.wi.us/Services/Elections.aspx>, send in an email, send a signed letter or request ballot at the My Vote Wisconsin website at <http://myvote.wi.gov>. Don't forget to include a copy of your Photo ID. **You can also vote in-person at City Hall during early voting: September 24, 2018 through November 2, 2018.**

## UNWILLING OR UNABLE TO VOTE AT A POLL SITE DUE TO AGE, ILLNESS, OR DISABILITY?

You can complete and turn in a signed authorization form (download an absentee request form at <http://www.ci.wausau.wi.us/Services/Elections.aspx>) or request an absentee ballot at the My Vote Wisconsin website at <http://myvote.wi.gov> or send a signed letter requesting permanent absentee status. Once you are signed up, an absentee ballot will be mailed to you for every election and you will remain on the permanent list as long as you continue to return an absentee envelope. An indefinitely confined voter does not need to provide a copy of photo ID. Instead, the witness' signature and address on the Absentee Ballot Certificate Envelope in which you return your voted ballot, satisfies the photo ID requirement.

## COMMON ABSENTEE BALLOTING ERRORS

Please take an extra moment to make sure the following requirements have been met so that your absentee vote counts:

- 1) Your name and address on the envelope label is correct and current. If the information is not correct – do not write over it, you must reregister at the new address.
- 2) You must sign the absentee ballot envelope.
- 3) A witness must also sign and write their complete address on the absentee ballot envelope certifying you were the person who cast the ballot.

## WHERE TO VOTE

Districts 1 & 2	Pilgrim Lutheran Church	709 Weston Avenue
Districts 3 & 10	Marathon Park East Gate	600 Block of Garfield Avenue
Districts 4 & 5	Boys & Girls Club of Wausau	1710 N. 2nd Street
Districts 6	Wausau East High School	2607 N. 18th Street
Districts 7 & 8	Wausau West High School	1200 W. Wausau Avenue
Districts 9 & 11	National Guard Armory I	833 S. 17th Avenue

## BECOME INVOLVED IN THE ELECTION PROCESS

Want to spend a rewarding day and serve your country? Sign up to be a poll worker! Citizen involvement ensures open and fair elections. Job duties include: greeter, registering new voters, poll list check in, ballot issuance and managing ballot counter. Job requirements: good with people, detail oriented, good penmanship, ability to sit or stand for extended periods of time. All day and half day shifts are available. Training is provided. Applications are available in the clerk's office or online at: <http://www.ci.wausau.wi.us/Services/Elections/Resources.aspx>.

Election Day is TUESDAY, NOVEMBER 6, 2018. Please exercise your right to vote!

**City of Wausau Polls are open 7:00 am to 8:00 pm. Clerk staff will be available to assist voters during polling hours. (715) 261-6620.**

## ELECTION POLL WORKERS WANTED FOR 2018 GENERAL ELECTION

Hiring Poll Workers to provide services on the Governor's Election November 6, 2018. Job Duties include: registering new voters, poll list check in, issuing ballots, counting ballots, etc. Job Requirements: good with people and the general public, detail orientated, good penmanship, ability to sit or stand for extended periods of time. Polls are open from 7:00 am to 8:00 pm. We offer full day and half day shifts. Training is provided. Applications are available on the City's website at <http://www.ci.wausau.wi.us/Services/Elections/Resources.aspx> or you can pick up an application at City Hall. Contact the Clerk's office at 715-261-6620 for further information.

## Celebrate Fall & Winter With Wausau Events!

Don't let the colder weather keep you inside! Join us as we celebrate the remaining months of 2018 and start of 2019 with pumpkins, horse-drawn wagon rides, crafts, Santa, beer, snow slides, mac 'n' cheese, hot cocoa, and endless fun!

### Upcoming Events

**Harvest Fest**, Saturday, October 6, 10 a.m. – 2 p.m., The 400 Block

**Holiday Parade**, Friday, November 30, starting at 6:30 p.m., Marathon Park to The 400 Block

**Winter Brew Fest**, Friday, January 25, 7 – 10 p.m., See website closer to event

**Winter Fest**, Saturday, January 26, 10 a.m. – 3 p.m., The 400 Block

For additional event information, including full schedules, visit [www.wausauevents.org](http://www.wausauevents.org).



## Marathon County Historical Society



### History Speaks at the Woodson History Center: Capturing the Packers: 75 Years of Bieber Family Photography

Ready for some football (history)? Join us at the Marathon County Historical Society for “Capturing the Packers: 75 Years of Bieber Family Photography,” another topic in our History Speaks series, at 2 pm, Saturday, October 6, 2018, at the Woodson History Center, 410 McIndoe St., Wausau. Speaker Matt Foss will highlight the work of Vernon Bieber and his two sons, John and Jim, covering 75 years of Packers history.

Vernon Bieber was the Packers’ team photographer for more than six decades, from 1946 to 2007. His career captured eras from Curly Lambeau to Vince Lombardi to Brett Favre. Sons

John and Jim Bieber followed in their father’s footsteps into photographing football and the Packers.

Matt Foss is the assistant director at the Leigh Yawkey Woodson Art Museum in Wausau. He spent years working with the Bieber family and curated the exhibition “Capturing the Packers: 75 Years of Bieber Family Photography” for Art Start in Rhinelander and “The Man Behind the Camera: The Life and Work of Vernon Bieber” at the Green Bay Packers Hall of Fame.

There is no admission fee; however, donations are appreciated. Registration is not required.

The Historical Society is grateful to Janke Book Store and to Compass Properties for their sponsorship of the History Speaks series.

Visitors might also enjoy a guided tour of the Yawkey House Museum, or visiting our free exhibit spaces. Milking Time: Evolution of the Dairy Industry in Marathon County, shows the hard work that went into creating fields after forests were logged off, and the progress made in breeding, testing, medicine and education that enabled dairying to develop into a viable business option. Rural Electrification: Outlet for Change depicts life before and after electricity made its slow way into rural areas of Marathon County in the 1930s and ‘40s. Our Stories: The History of Marathon County features reminiscences of how people arrived in this area, and how they worked and played in days gone by.

For more information, please call the Marathon County Historical Society at 715-842-5750.

## Wausau Police Department

### Odd/Even Overnight Parking

Are you confused on what side of the street to park on during the overnight hours? Have you received an overnight parking ticket and wondered why you received it? The following information should clarify the rules for overnight parking in the City of Wausau.

**ALL NIGHT PARKING:** Parking is allowed on City streets (other than in designated areas in downtown—see below) on an alternate side basis **during the hours of 2:30 a.m. and 6:00 a.m.** It is not necessary to call the Police Department for permission. Vehicles must be parked on the even-numbered side of the street on even-numbered calendar days and on the odd side of the street on odd-numbered calendar days. Odd/even parking is not allowed on streets where “No Parking” restrictions are in effect. However, odd/even parking is not enforced on streets with “No Parking” on one side of the street only. Therefore, residents can legally park on the side not prohibitively posted regardless of the day unless a snow emergency has been declared.

**Keep in mind the odd/even requirement pertains to the time period of 2:30 a.m. to 6:00 a.m. If you park your vehicle on the street in the evening intending that it will be parked overnight, make sure it is on the appropriate odd/even-numbered side of the street for the time period of 2:30 a.m. to 6:00 a.m.**

**DOWNTOWN AREA:** Parking is not be allowed in the area (including both sides of the streets) bounded on the north by McIndoe Street, on the west by First Street, on the south by Forest Street, and on the east by Sixth Street. Persons who live downtown (and occasional visitors) can contact the Clerk/Customer Service Office (phone 715- 261-6620) to purchase monthly overnight permits to park in a City parking facility.

**SNOW EMERGENCY:** Overnight parking will not be allowed during snow emergencies. Residents should keep in mind that even if a snow emergency has not been declared, vehicles which are parked overnight on City streets during snowfalls may hinder snow plowing operations.

The forfeiture for violating the overnight parking ordinance is \$25.00, and is \$100.00 during snow emergencies.

**Halloween Trick or Treat Hours** Wednesday, October 31st from 4-7 pm

# Leigh Yawkey Woodson Art Museum

## Birds in Art 2018 Soars

Glorious weather and robust crowds of enthusiastic visitors graced the Leigh Yawkey Woodson Art Museum during the 2018 Birds in Art exhibition's opening weekend, September 8-9, including seventy-one artists who traveled to Wausau from around the world to experience the excitement.

Visitors who made the Woodson Art Museum their first stop of Wausau's Artrageous Weekend on Saturday morning listened to a presentation by 2018 Master Artist Cindy House and watched eleven "Artists in Action" demonstrating their techniques in an array of mediums throughout the Museum's sculpture garden.

New England pastel artist Cindy House's exquisite landscapes appear – by design – to be oil paintings and feature sweeping vistas of avian habitats. **The 2018 Birds in Art exhibition** presents artworks by 114 artists in total: 2018 Master Artist Cindy House, 21 who were named **Master Artists** during previous **Birds in Art** exhibitions, and 92 artists whose work was selected by three jurors who reviewed 904 entries submitted by 575 artists. This year's exhibition includes 31 international artists, 8 Wisconsin artists, and 12 first-time Birds in Art artists.

Among an array of programs for all ages this fall, two Birds in Art artists will lead residencies. Kris Parins will share watercolor techniques during her **residency, October 2-7**, including work with area school children, a public demonstration, and teen and adult weekend workshop. Josh Guge will highlight woodcarving during his **residency, November 1-4**, leading an Art 101 evening program and a weekend workshop for teens and adults.

California-based artist and science illustrator Jane Kim, who recently completed a mural at the Cornell University Lab of Ornithology celebrating the evolution and diversity of birds, will design and paint a mural for the Woodson Art Museum focusing on how birds get their color. Her **residency takes place November 9-18** and coincides with the publication of *The Wall of Birds* (Harper Collins), detailing Kim's Cornell Lab of Ornithology project.

### Hours:

Tuesday – Friday 9am–4pm  
 First Thursdays each month 9am–7:30pm  
 Thursdays during Birds in Art 9am–7:30pm  
 Saturday – Sunday Noon–5pm  
 Closed Monday & holidays, including New Year's Day, Easter, July 4, Thanksgiving, Christmas Eve, Christmas

### Admission: Always Free

Admission  
 Phone: 715.845.7010  
 E-mail: [info@lywam.org](mailto:info@lywam.org)  
 Location: Franklin & 12th St,  
 Wausau, WI 54403  
 700 North Twelfth St  
 Online: [www.lywam.org](http://www.lywam.org)

### A sampling of museum programs this fall includes:

- **Art Park Open Studio** – on the first Saturday of each month, 1-3 p.m., all ages drop in for hands-on art making inspired by artwork on view in the galleries.
- **SPARK!** – on the second Thursday of each month, 10:30 a.m.-Noon, programs for individuals with memory loss and an accompanying friend or family member offer social interaction in the galleries, followed by a hands-on art activity; call 715-845-7010 to register.
- **Art Beyond Sight** – on Saturday, October 20, 10:30 a.m.-Noon, for individuals with low vision or blindness. Participants join Museum educators for a multisensory exploration of the galleries followed by hands-on art making. Call 715-845-7010 to register.
- **Toddler Tuesdays** – on the third Tuesday of each month, 10:30 a.m.-Noon, little ones, 18 months-4 years, and accompanying adults drop in to sample art making and interactive play in Art Park.
- **Art Babies, Art Time for Tots, Art 4 You, and Art Kids programs** – offered during the last full week of each month; check the online [events calendar](#) and call 715-845-7010 to register.



Cindy House, *Autumnal Colors, 2018, pastel*

## City Hall Closed During Holidays

The City of Wausau administrative offices will be closed on Thursday and Friday, November 22 and 23, 2018 for the Thanksgiving holiday. Offices will also be closed on Monday and Tuesday, December 24 and 25, 2018 for the Christmas holiday and Tuesday, January 1, 2019 for the New Year's holiday.

If you have an Animal Control/Traffic or Crime issues, you may call the non-emergency police department at 715-849-7796 (or the Sheriff's department at 715-261-1200). For garbage or recycling information during the holidays, please call Harter's Fox Valley Disposal at 715-253-2619 or 1-888-804-8556.



## CITY OF WAUSAU

407 Grant Street  
Wausau, WI 54403

PRSR STD  
U.S. POSTAGE  
PAID  
Permit No. 600  
Wausau, WI

\*\*\*ECRWSS\*\*\*

## POSTAL PATRON

### Mayor

Robert B. Mielke  
261-6800  
315 S. 8th Avenue  
Robert.mielke@ci.wausau.wi.us



### City Council Representatives

#### District 1

Patrick Peckham  
1618 Emerson St  
715-845-1396  
Patrick.peckham@ci.wausau.wi.us



#### District 2

Michael Martens  
1228 Arthur Street  
715-845-4218  
Michael.Martens@ci.wausau.wi.us



#### District 3

David Nutting  
534 S. 1st Avenue  
715-842-2589  
David.nutting@ci.wausau.wi.us



#### District 4

Tom Neal  
916 Hamilton Street  
715-573-6042  
Tom.neal@ci.wausau.wi.us



#### District 5

Gary Gisselman  
319 Park Avenue  
715-848-5160  
Gary.gisselman@ci.wausau.wi.us



#### District 6

Becky McElhaney  
4050 Ashland Avenue  
715-581-3762  
Beck.mcelhaney@ci.wausau.wi.us



#### District 7

Lisa Rasmussen  
1310 Crescent Drive  
715-675-4872  
Lisa.rasmussen2@ci.wausau.wi.us



#### District 8

Karen Kellbach  
502 Knox Street  
715-675-2694  
Karen.kellbach@ci.wausau.wi.us



#### District 9

Dawn Herbst  
2809 Springdale Avenue  
715-842-8347  
Dawn.herbst@ci.wausau.wi.us



#### District 10

Mary Thao  
506 Sherman Street  
612-345-2697  
Mary.thao@ci.wausau.wi.us



#### District 11

Dennis Smith  
3516 Polzer Drive  
715-573-7994  
Dennis.smith@ci.wausau.wi.us



## Fall & Winter Recreation Programs 2018-2019

### Shooting Range Park

**September Hours:** Sat. & Sun. 9 am-5 pm, Wednesday Noon-8 pm.

**October Hours:** Wed - Sun 9 am-4:30 pm

**November Hours:** Daily 9 am-4:30 pm.

Closes November 16. Adult supervision for ages 13 and under. Fee: \$4 for ages 12 and older, under 12 free.

Annual pass \$40. Targets, clay pigeons, and ear protection for sale on site.

### Adult Evening Water Exercise

**Oct. 08-Nov 15, 2018**

**Jan. 2-Feb 6, 2019**

**Feb 11-March 20, 2019**

6:30 -7:30 pm, John Muir Pool  
Mon /Wed nights. Fee: \$45 Wausau residents, \$57 non-res. Space limited, pre-registration required. No children or drop-ins allowed.

### Haunted Train Ride

**Sunday Oct 28**, Marathon Junction, Marathon Park

1-4 pm. 5-7 pm. (Must be at least 7 years of age for evening train.) Costumes are welcome! \$5. Kids under 12 must be accompanied by an adult. All riders receive a goodie bag suitable for Trick or Treating.

### Sylvan Hill Snow Tubing

**Dec 15 through March 03** (weather permitting)

Fri. 6-9:30 pm, Sat. 1:30-5 or 6-9:30 pm, Sun 1:30-5 pm. Must be 42 inches tall to ride. One rider per tube. Fee: \$7.00-13 & under (min. 42 inches tall); \$9.50 14 & older.

### Holiday Hours

**Dec 24, 31, Jan 1** 1:30-5 pm

**Dec 26-30** 1:30-5 & 6-9:30 pm. Hill available to rent for private parties. Call 715 261-1550 for details.

### Sledding Hills in Wausau

Open when snow cover permits.

Hours: sunrise to 11 PM Fee: FREE!

Locations: Pleasant View - 1221 Sumner St (lights). "3M" Park - 405 Park Blvd (lights). Riverside Park - 100 Sherman St

### Indoor Ice skating (w/skate rentals)

**Dates:** Oct. 1 - Mar 8, Mon-Fri 11 am-1 pm, Oct 17 to Feb 20, Wed. 7-9 pm, Sun. 2-5 pm. Call 715 261-1550 for Holiday hours.

Hours subject to change due to special events and/or scheduling conflicts. Fees: Youth (17 & under) \$2, Adult \$3. Youth Bonus Card (10 sessions) \$15. Adult Bonus Card \$25. Skate rental \$3.

### Outdoor Ice Skating

The outdoor ice skating season begins as soon as conditions allow them to be built and runs through Feb 18, 2018. Rinks will be built on the 400 Block and at the southeast side of the Grandstand in Marathon Park. Warming houses can be found at 400 Block and Marathon Park. Hockey boards can be found at Marathon Park. Skating hours for all rinks are Mon-Fri 5-8 pm, Sat. 10 am-8 pm and Sun. 10 am-6 pm.

### Cross-Country Skiing/Snowshoeing

Open when snow conditions permit. 9-Mile County Forest Recreation Area w/groomed & signed trails, ski & snowshoe rentals, a chalet & 3.7 miles of trail with lights for night skiing. Season or daily pass required. Call for rates, hours and conditions 261-1550. Sylvan Hill w/groomed trails. Park Shelter w/restrooms & snack bar available when tubing hill is open. Donation requested.

### Wausau Outdoor Pools Pass Sale

Purchase your Wausau Outdoor Pool Pass from Dec 1 to Jan 5, save 15%, Jan 6 to April 15, 2019 and save 10% over the cost of your family, adult or youth pool pass. All neighborhood water parks will open on or about June 7, 2019 at 1 PM (Starting date may be affected by "Snow Days" and the final school day for Wausau students).

### Winter Special Events

#### Happening in the Parks

Midwest Freeze Outdoor 4 X 4 Pond Hockey [www.classicpondhockey.com/](http://www.classicpondhockey.com/)

### Wausau Nordic Ski Club Calendar

[www.wausaunordic.com/calendar.htm](http://www.wausaunordic.com/calendar.htm)

### Wausau Events Winter Fest

[www.wausauevents.org/events/winter-fest/](http://www.wausauevents.org/events/winter-fest/)





# WAUSAU WATERWORKS

FOR YOU!

inside this issue

**Schedule of Rates**

**Water Meter Change Outs**

**Unidirectional Flushing Continues**

**Welcome Aboard**

**Good News on Lead Testing**

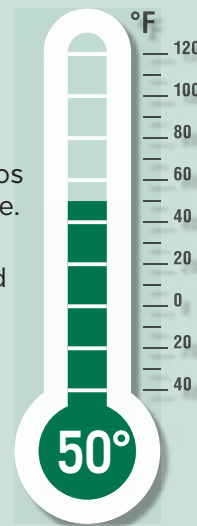
**Wausau Water Works to Issue Delinquent Notices**

**Social Media helps with Communication**

## It's Time to Get Ready for Cold Weather

As you enjoy the cool fall days and start preparing for winter please keep you water system in mind. There are a number of tips to help avoid problems with frozen or broken pipes in your home.

- ✓ Check all basement doors and windows to make sure they are closed up tight and seal up any cracks that may let in cold drafts.
- ✓ Make sure the basement can be heated to a minimum of 50 degrees.
- ✓ Use of space heaters in the living spaces of homes may help keep you feeling more comfortable, but it may also limit the amount that your furnace runs, which could cause basement temperatures to drop and cause pipe or water meter freezing or breakage.
- ✓ Homeowners with finished basements are encouraged to allow air to circulate around the water meter; this is especially true if the meter is encased behind a wall.
- ✓ Leave cabinet doors open under sinks that are located on exterior walls.
- ✓ Vacant properties - make sure to have someone check the property on a regular basis to make sure the furnace doesn't go out. This is especially important as temps start to drop or during extended periods of cold weather. Better yet, contact Wausau Water Works to turn off the water service at the street and remove the water meter; the property can then be winterized. There is a fee to turn the service back on, but it is minimal compared to the damage one broken pipe can cause.
- ✓ Never thaw a frozen pipe with an open flame. Thawing should only be done using a hair dryer or heat tape. Before starting to thaw make sure you know where the main water shut off valve is located in your home and that it works. If you were to discover a crack in the pipe you will want to be able to immediately shut off the water supply.



## Water Rates Increases August 1, 2018

Water rates for City of Wausau residents increased as of August 1, 2018. For the average family of four, based on 2400 cu. ft., water rates will increase from \$67.92 to \$69.84 per quarter, or \$0.64 per month. A family of two that uses 1200 cu. ft. will likely see about a \$0.40 per month increase. Public Fire Protection fees also increased from \$9.87 to \$10.17 per quarter (based on the smallest residential meter size).

Although we understand that no one likes to see their water bills increase, we remind customers that the utility does not get any financing through the city tax rolls. Our operating revenues are solely obtained through our rates. A full schedule of rates is shown on page 2 of this newsletter.



## Schedule of Rates

### WAUSAU WATER WORKS

407 Grant Street - City Hall  
Wausau, WI 54403-4783

Phone: 715 261-6530 • Fax: 715 261-6535

E-mail: [waterworks@ci.wausau.wi.us](mailto:waterworks@ci.wausau.wi.us)

**Office Hours:** Monday-Friday 8:00 am-4:30 pm

### WATER RATES

#### EFFECTIVE AUGUST 1, 2018

##### Quarterly Service Charge (based on meter size)

5/8 Inch Meter	\$16.56
3/4 Inch Meter	16.56
1 Inch Meter	27.06
1-1/4 Inch Meter	39.45
1-1/2 Inch Meter	47.73
2 Inch Meter	70.02
3 Inch Meter	125.73
4 Inch Meter	181.41
6 Inch Meter	337.38
8 Inch Meter	515.61
10 Inch Meter	754.29
12 Inch Meter	993.00

##### Plus Volume Charge:

##### Residential Customers

All water used - \$2.22 per 100 cu. ft.

##### Non-Residential Customers

First 6,000 cu. ft. \$2.22 per 100 cu. ft.

Next 54,000 cu. ft. used - \$2.07 per 100 cu. ft.

Over 60,000 cu. ft. used - \$1.75 per 100 cu. ft.

##### Irrigation Class - All water used - \$3.18 per 100 cu. ft.

Bills for water and sewer service are issued quarterly and due the 20th of the month. A 1% late payment charge is added to the outstanding balance after the 20th of each month and is applicable to all customers. To avoid late payment charges, all bills must be received in the **office of the City Treasurer** by the due date printed on the front of the bill. Customers who pay at remote collection sites (grocery stores) are recommended to make payments prior to due dates to ensure timely receipt by the City Treasurer.

### PUBLIC FIRE PROTECTION FEES

#### EFFECTIVE AUGUST 1, 2018

##### Quarterly Service Charge (based on meter size)

5/8 Inch Meter	\$10.17
3/4 Inch Meter	10.17
1 Inch Meter	25.41
1-1/4 Inch Meter	37.56
1-1/2 Inch Meter	50.79

2 Inch Meter	81.30
3 Inch Meter	152.76
4 Inch Meter	254.61
6 Inch Meter	509.22
8 Inch Meter	811.59
10 Inch Meter	1,218.96
12 Inch Meter	1,626.36

### SEWER RATES

#### EFFECTIVE JANUARY 1, 2011

##### Quarterly Service Charge (based on water meter size)

5/8 Inch Meter	\$17.00
3/4 Inch Meter	17.00
1 Inch Meter	23.00
1-1/4 Inch Meter	32.00
1-1/2 Inch Meter	37.00
2 Inch Meter	62.00
3 Inch Meter	112.00
4 Inch Meter	183.00
6 Inch Meter	361.00
8 Inch Meter	568.00

##### Plus Volume Charge

All volume, as recorded by the water meter each quarter shall be charged at the rate of \$2.59 per 100 cubic ft.

All customers are billed for sewer based on the amount of water used each quarter. Unmetered sewer rate is \$68.80 per quarter in the City and \$85.85 per quarter outside the City.

### PRIVATE FIRE PROTECTION CHARGES

#### EFFECTIVE APRIL 1, 2015

This service is for unmetered connections to the main for the purpose of supplying water to private fire protection systems such as automatic sprinkler systems, standpipes, (where same are connected permanently or continuously to the mains) and private hydrants.

2 Inch or Smaller Connection	\$ 12.00
3 Inch Connection	22.50
4 Inch Connection	37.50
6 Inch Connection	75.00
8 Inch Connection	120.00
10 Inch Connection	180.00
12 Inch Connection	240.00

### CHARGES FOR TURNING ON SERVICE

#### Turn on valve at curb (includes meter installation if needed)

During Normal Business Hours	\$60.00
After Hours	100.00

### LATERAL CONNECTIONS

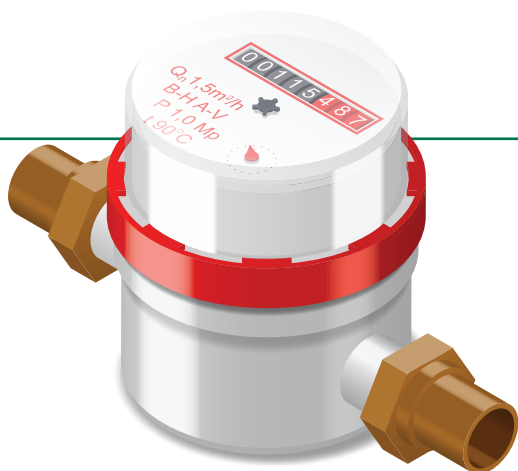
1" Water Lateral Connection . . . Based on Time & Materials  
1-1/2" or Larger Water Lateral . . . Based on Time & Materials

### MISSED APPOINTMENT FEES

During Normal Business Hours	\$60.00
After Hours	100.00

### MISCELLANEOUS

Payments Not Honored by Financial Institution . . . \$40.00



## Water Meter Change Outs

The Public Service Commission requires us to test/change out a certain percentage of our meters each year. You will receive a post card of notification if your meter is due for a replacement, which will request that you call (715)-261-6530 or go on line and set up an appointment for the meter replacement.

**We greatly appreciate your prompt response when you receive the letter so that we can keep this program moving as efficiently as possible and don't have to waste time tagging doors or turning off water.**

- ✓ It is a good idea to know where your meter and inside shut off valve are in case of an emergency.
- ✓ Exercising the valve occasionally will help to prevent the valve from leaking when a meter change-out is required and will ensure that it is working should you need to use it in the case of an emergency. Wausau Water Works is not responsible for a valve that leaks after it has been used to complete the meter change out.

**Please do not obstruct the water meter in any way,** water department personnel need to be able to easily access the water meters. The water department is not responsible for any damage to your property if the meter is obstructed. If you build around the meter, please be sure to allow an adequate access to the water meter of at least 1 ½ to 2 feet on each side of, including above and below the meter.

## Unidirectional Flushing Continues

In 2016 Wausau Water Works implemented an unidirectional flushing program to help us continue to provide high-quality water to our customers. This is a high volume flushing where staff will open and close pre-determined valves to isolate specific sections of water main. Fire hydrants are then flushed to pull the water from one direction (hence the term “unidirectional”), the speed and volume of water create a scouring action to remove the built up of sediment from the water mains.

Notification to customers is done in several ways. Post cards are mailed to each customer with a water service that will be affected by each flush. The use of the City of Wausau Public Works and Utilities Facebook page also helps spread information to customers. As crews make progress they place signage ahead of them to help notify customers that we will soon be in that area. Please understand there is no way we can determine an exact time /date that we will be in a location, or the time it will take to flush out the accumulated sediment.

During the flushing process customers in the vicinity will notice some discoloration in the water and temporary drop in water pressure. Your water may be discolored for a short period of time and could stain laundry. If possible, do not use you water while flushing is occurring. To correct any discoloration, run your cold water for a few minutes to remove the discoloration from the internal plumbing.

If this does occur please understand crews are working to minimize any inconvenience to our customers. If you have any questions please contact Wausau Water Works at 715-261-7265.

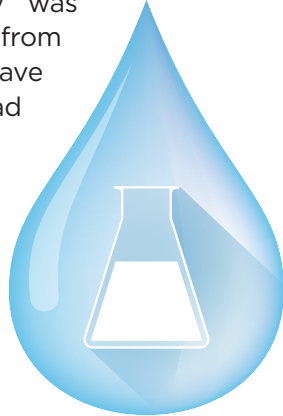


## Welcome Aboard

Wausau Water Works would like to recognize our newest distribution maintainer. Kevin Hertel has moved from the wastewater department to the water department.

## Good News on Lead Testing

The Wausau Water Works Drinking Water Division has passed their lead and copper testing for 2018. The utility was required to collect 30 samples from homes around the city that have either lead service lines or lead solder. The reporting value for this year was 7.2 parts per billion, well below the MCL (max contaminate level) for lead of 15 parts per billion. All of the samples collected were under the 15 ppb. Wausau Water Works appreciates the cooperation of homeowners who participated in this important testing. If you are looking for more information on lead exposure please visit the U.S. EPA website at [www.epa.gov/lead](http://www.epa.gov/lead), or contact your healthcare provider.



## Wausau Water Works to Issue Delinquent Notices

Notices for delinquent water and sewer bills will be issued in early October to property owners and tenants. These bills are due by November 1, 2018 to avoid an additional 10% penalty. If not paid by November 15, the total owing, including the 10% penalty, will be added to the property taxes. Recent changes in the law now states that these charges may also show up in the Circuit Court Access Program (CCAP) program under the tenant's name. This could have a bearing for tenants who are looking at renting other properties and have delinquent water and sewer bills as potential landlords would be able to see that information. Should you have any questions regarding this new law or outstanding balances, please contact Wausau Water Works at 715-261-6530.

**Social Media helps with Communication**

Wausau Water Works has a new tool to help notify customers. The use of the face book page, **City of Wausau Public Works and Utilities**, helps our crews notify the public of outages and road closures as well as updates on the progress of work.