



*works for you!*

inside this issue.

**Wausau Community Development Authority Affordable Housing Programs**

**River District**

**Department of Inspections, Zoning & Electrical Systems**

**No Mow May**

**Yard Waste Site Hours**

**Wausau Experiences Record Construction Growth in 2020**

**MCDEVCO - Building the Future - Beginning Today**

**Wausau Events**

**Wausau Police Department**

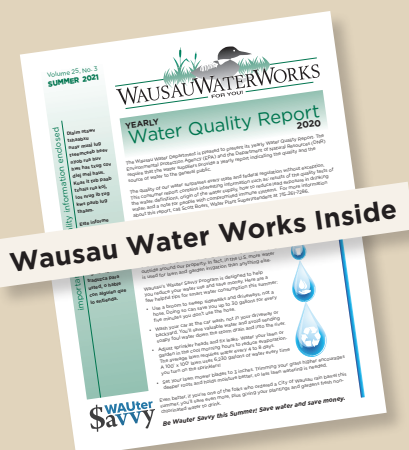
**Good News - You can change a community**

**Grand Theater - The Best of Broadway**

**Woodson Art Museum**

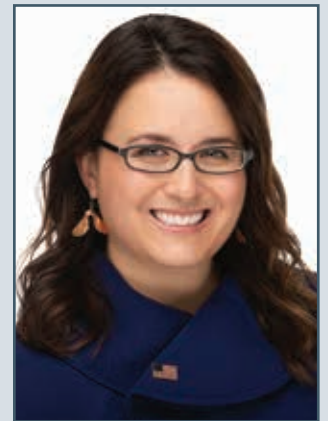
**Monk Botanical Gardens**

**Garbage and Recycling Calendar**



## Mayor's Message - Katie Rosenberg

*Happy Summer, Wausau.*



We've been through a lot over the last year. I've been thinking a lot about what it means to get back to normal. I think we're going to see a mix of things that signal where we've been and where we're going.

Some things might stay the same. I'm looking forward to the return of Concerts on the Square on Wednesdays this summer. As it turns out, Wausau diners loved the pandemic response of dining al fresco so you will see a return of Dining on the Streets as well. When it comes to governing, the Wausau City Council decided that they work better together in the same room, so our meetings are all back to in person. You can still view them in real time on YouTube and catch the replays on Public Access and YouTube as well.

Some things will change. We've already seen changes to how events are held, where events are held, and the kinds of safety precautions and requirements organizers are putting in place. I've also changed my priorities and I'm guessing you have too. I've made sure that my friends and family know how much I love and appreciate them more than ever because of how quickly things can change.

Some things might just go away forever and that's okay too. It's opening the door for new experiences and appreciating the stillness and autonomy that new space creates.

Lastly, it's important to acknowledge the national attention Wausau and Marathon County just endured. I know the kind of commitment Wausau has to each other and we truly aspire to be A Community For All even though the political discussions have been difficult and even damaging.

While this debate has many digging in and refusing to talk to each other, I'd invite you to start over now and decide to really listen. Let the quieter voices chime in. Notice what makes you feel uncomfortable, vulnerable, and maybe a little awkward. Assume positive intent. Let's be intentional as we chart our paths forward. We can get there.

Enjoy your summer, Wausau!

Katie Rosenberg, Mayor, City of Wausau

**Mission Statement...** In response to our citizens, we will provide services in the most effective manner in order to promote and enhance our living environment. Plan and encourage positive growth. Promote a positive community image by encouraging citizen involvement and civic pride.

## Community Development



### Wausau Community Development Authority Affordable Housing Programs

As the City of Wausau moves forward on an effort to inventory affordable housing resources across the

community, we'd like you to know about Wausau Community Development Authority's programs that already address various gaps in the overall affordable housing spectrum; providing quality housing options to elderly, disabled and low income residents in a variety of locations and formats:

Riverview Terrace Assisted Living is a licensed 36-unit Residential Care Apartment Complex (RCAC) providing up to 28 hours of personal, supportive and nursing services per week to low income individuals 62 years and older. Residents pay a monthly service fee as well as 30% of their adjusted monthly income toward rent. We are accepting applications and currently have immediate availability.

Riverview Towers is a 149 unit, independent living apartment complex available to near-elderly, 55 and over, and disabled persons over 18 years of age. Tenant rent is based on 30% of adjusted monthly income and all utilities are included, with the exception of phone, internet and cable. It is conveniently located on the bus line and although we are accepting applications, there is a wait list.

The WCDA also owns and operates 46 units of public housing available to income-qualified families. This housing stock consists of 10 duplexes, 20 single family homes and 1 six-plex scattered throughout Wausau, each blending in with their respective neighborhoods. Unit sizes range from one to four bedrooms with rents based on 30% of a household's adjusted monthly income. While tenants are responsible for their own gas and electricity costs, each receive a utility allowance to offset the expense. We are accepting applications and although there are wait lists, the 3 and 4 bedroom wait lists are very short.

The Housing Choice Voucher (HCV) Program assists very low income individuals and families the ability to afford decent and safe housing in the private market. The WCDA currently partners with over 100 local landlords and assists 260 families with monthly rental vouchers. Once a voucher holder finds a suitable unit that meets program requirements, the WCDA issues a housing assistance payment directly to their landlord on their behalf. The participant then pays the difference between the actual rent and the amount subsidized by the program. Two new program initiatives include a Fostering Youth to Independence (FYI) Program as well as offering a homeless wait list preference. Although the wait list for the HCV program is currently closed, it is expected reopen this summer.

More information on these affordable housing options and programs can be found on the City's website or by contacting the WCDA office at 715.261.6687.

Wausau Community Development Authority, 550 E. Thomas Street, Wausau, Wisconsin 54403



### Dining on the Street

**June 9th – September 15th**

**Wednesday and Saturday evenings  
from 5-9pm**

Held in conjunction with  
Concerts on the Square

Enjoy dining al fresco in downtown Wausau and enjoy live music! Please check the event status if weather conditions change by visiting the Wausau River District Facebook page. The event will be canceled for rain or if temperatures fall below 50 degrees. Reservations are recommended.

### Downtown Employee Appreciation Week

**June 21st – June 25th**

This is a week all about celebrating our downtown office workers. We love that you've made your "second home" in downtown Wausau's River District, and we want to put some fun in your work week! So join us for a week of activities ranging from Wausau's largest coffee break to chair massages to a mini-golf challenge.

Please visit our website for more information [www.WausauRiverDistrict.org](http://www.WausauRiverDistrict.org).

### Sidewalk Sales

**Thurs., July 8th – Sun., July 11th  
during regular business hours**

Get the best deals of the Summer from your favorite local businesses during Sidewalk Sales, July 8th - 11th! This summer sale event is a can't miss shopping experience in charming, historic downtown Wausau! Visit our website [www.WausauRiverDistrict.com](http://www.WausauRiverDistrict.com) for a complete listing of specials and deals.

# Department of Inspections, Zoning & Electrical Systems

SUMMER 2021 | [INSPECTIONS@CI.WAUSAU.WI.US](mailto:INSPECTIONS@CI.WAUSAU.WI.US) | 715.261.6780



## Keeping a safe & healthy community!

City residents take great pride in maintaining their property. Lawn care is an essential task in keeping in compliance with city ordinances.

- Lawns shall be maintained to a height not to exceed 12 inches. Landscaping shall be maintained so as not to present hazards to adjoining properties or to persons or vehicles traveling on public ways. Property owner maintenance responsibilities include the boulevards and along alleyways.
- Exterior areas shall be maintained in a clean and sanitary condition, free from any accumulation of items, garbage, debris, yard waste.
- Yard waste cannot be placed on the Right-of-Way, including the alleys, boulevards, gutters and streets.
- Dog/animal excreta must be picked up in a timely manner, so as to minimize health hazards.
- Furniture, not intended for outdoor use, is not allowed on yards or open porches.

## CONSTRUCTION & REMODELING PROJECTS

Our inspection department wants your project to be a success and will help you avoid potential problems that could cost you time and money. On-site inspections will be required to make certain the work conforms to the permit, local codes and plans.

Discuss your plans with the inspections office before beginning your project to determine whether you need a permit. Even if a permit is not needed, the inspector can answer questions and provide valuable advice.

A complete list of permit requirements is available on-line at:

[www.ci.wausau.wi.us/Departments/Inspections](http://www.ci.wausau.wi.us/Departments/Inspections)

### Rental Registration Program

The city has adopted a residential rental unit registration program to help various city departments contact property owners or managers in the event there is a concern or issue at a rental property. This ordinance requires the owner(s) of residential rental properties to register with the City of Wausau, providing the owner's contact information, or at the option of the owner, a primary contact person for the property.

A [Residential Rental Registration form](#) is included with this mailing, or can be accessed through the City of Wausau website at

<http://www.ci.wausau.wi.us/Departments/Inspections/RentalProperties.aspx>.

The general office hours are M-F 8:00 AM to 4:30 PM. The inspectors are in the office from 8:00-9:00 AM and 12:30-1:30 PM, M-F, to review plans, issue permits and answer questions. The remainder of the work day, they conduct on-site inspections. If these times are not convenient for you, contact the department at 715.261.6780 or [inspections@ci.wausau.wi.us](mailto:inspections@ci.wausau.wi.us)

### RECREATIONAL EQUIPMENT

Motor homes, camping and travel trailers, boats, trailers, snowmobiles, ATV's, etc. cannot be parked or stored in any required front yard or corner side yard, except for on a designated driveway which meets the City's hard-surfacing requirements.

Equipment or trailers that are longer than 30' (measured from back bumper to tongue) must be parked within enclosed structures.

### TRASH CONTAINERS, RECYCLABLE CONTAINERS AND TRASH:

Trash containers, recyclable containers and trash shall not be set out for collection any sooner than 3:00 p.m. of the day before pickup, and all containers shall be removed from the curb-side/boulevard area by 11:00 a.m. of the day after pickup.

Between pickups, trash and recyclable carts should be stored in a garage or shed, or kept behind or on the side of the house. Containers cannot be stored at the front of the house or on a corner lot side yard.



## no mow may Program Wraps up in Wausau

The City of Wausau participated in a No Mow May program this year. The program allowed residents who registered the ability to limit their lawn mowing practices during the month of May. The goal is to provide early season foraging resources for pollinators that emerge in the spring, especially in urban areas where fewer floral resources are available. The month of May is especially important as it is the formative period for bees and other pollinators that depend on native wildflowers, grasses, and other plants that bloom in the spring. Pollinators are important not only for flowers and other landscaping plants, but for many of the crops that produce our food.

The No Mow May program started in Appleton, Wisconsin last year and Wausau became one of a few communities outside of Appleton to try a pilot program this year. In the city of Wausau, 488 citizens signed up to participate, which was actually higher than the number of Appleton residents last year.



Part of the program involves citizens volunteering to collect data from their lawns. In Wausau, 37 “citizen scientists” volunteered to participate. The results of this community science program will be tabulated in the coming weeks. For more information and updates, please visit the website [www.BYOBEEZ.org](http://www.BYOBEEZ.org).

The results of the this year’s program will be evaluated and discussed at a future city committee meeting to see if the program will return next year, and if so, what improvements could be made.

Citizens who participated in the program are reminded to go back to maintaining their lawns for the remainder of the season.

City Of Wausau

## Yard Waste Site 2021 Hours of Operation

The City of Wausau Yard Waste site is located at the east end of East Chellis Street. The site will be locked and gated during non-operating hours and is monitored by video surveillance. Citations will be issued to parties who leave yard waste outside the gate of the facility. Call the Department of Public Works at 715-261-6960, if you have any questions. Office hours are Monday-Friday 7:00 a.m. – 3:30 p.m.

### YARD WASTE SITE 2021 HOURS OF OPERATION

Monday	CLOSED
Tuesday	CLOSED
Wednesday	9:00 am - 8:00 pm
Thursday	CLOSED
Friday	9:00 am - 5:00 pm
Saturday	9:00 am - 5:00 pm
Sunday	9:00 am - 5:00 pm

## Wausau Experiences Record Construction Growth in 2020

The City of Wausau is reporting record construction permit value in fiscal 2020, exceeding the previous annual construction permit high-water mark by more than 60 percent.

The total value of construction permits issued by City of Wausau Inspections Department during 2020 was \$226,602,801, nearly double the permit total of \$116.2 million registered in 2019 and far exceeding the previous record year of \$139.8 million in new permits recorded during 2017.

Last year’s growth was primarily driven by two large public works projects to construct a new water treatment facility and the renovation of the wastewater treatment plant. Those

projects represent approximately \$110 million in construction permits.

Even subtracting for the value of these two large public works projects, fiscal 2020 construction permit levels would have exceeded those from 2019 and 2018, with the increase fueled by new commercial construction projects. Substantial new projects during 2020 contributing to this growth include The Apartments at Riverlife, Surgical Associates, S.C. at 28th and Stewart avenues; Mountain Lane Apartments; Best Western Plus Wausau Tower Inn; and Sturgeon Eddy Road Apartments.

Official property valuation totals are released by Wisconsin Department of Administration in early August for

the previous year. These numbers are used by local government officials to calculate property tax rates for the city. As a result, increasing property values across the city allow elected officials to spend more without raising property tax rates, and in some circumstances can even lower property tax rates.

More information on building activity reports in the City of Wausau can be found online at <https://www.ci.wausau.wi.us/Departments/Inspections/PermitInformation/BuildingPermitActivity.aspx>.

# MCDEVCO – Building the Future – Beginning Today

## Entrepreneur Development Starts with Leadership

After four months of hard work, MCDEVCO’s entrepreneurial leadership course finished on May 27, 2021 with two nights of their dolphin tank presentations from the class of 18. From the class currently 50% has started or are opening their businesses. We are excited for each of them as they live out their dreams to be small business owners!

Watch for the next leadership class, which will begin in the fall!

## Women’s Program

**November 5, 2021** we are presenting a program for women entrepreneurs, business leaders, and small business owners. The day will begin with our keynote speaker, Allison Liddle who will inspire women to achieve that next level in their lives! Watch for more information.

## GAP Financing

MCDEVCO has GAP financing for new and expanding businesses throughout the City of Wausau and Marathon County to assist entrepreneurs. We partner with your financial institution to “fill the lending gap” to help:

- Create new and expand existing small businesses throughout Marathon County
- Invest in larger projects that support significant community/economic development
- Help finance projects that create and retain jobs (to include low-to-moderate income individuals)
- Improve under served and/or distressed areas
- Develop community services

Contact us today at MCDEVCO to find out more about GAP financing — or any of our other programs or services.

**Crops & Shops Marketplace**  
 June 24, July 22, Aug. 26, and Sept. 23, 2021 from 3:00pm - 7:00pm  
 Call 715.298.0084 and Register TODAY!!  
 Sell Your Farm Products - **CROPS** Or  
 Showcase Your Business/New Product - **Pop-Up SHOPS**.

Food Available  
 Live Music  
 Family Farm  
 Farm Fresh  
 Crops to Market  
 Buy Local  
 Children's Make & Take Craft!

**MCDEVCO, Inc.**  
 Entrepreneurial & Education Center  
 100 N 72nd Ave - Wausau, WI 54401

NEW for 2021 is MCDEVCO's **Crops & Shops Marketplace** to be held on 6/24, 7/22, 8/26, and 9/23, 2021 from 3:00pm – 7:00pm. Sign up today to be a CROP vendor, Pop Up Shop or a Food Truck at one or all of the dates. Also, there will be music, a children’s make and take craft activity, and tours at 4:00pm and 5:00pm of the Entrepreneurial & Education Center at each marketplace. Plan to come with your family and/or friends to support our small businesses from throughout the County.

**RE-VISION**  
 WITH ACTION CAN CHANGE THE WORLD.

**Your Success Post-COVID Workshop Series**

Timothy McKeough from Q Up Success, LLC will lead our new program series. **The series runs 8/25, 9/1, 9/8, and 9/15 from 6:00pm to 7:30pm** at MCDEVCO. Weekly topics include taking 100% responsibility for your future, creating a vision board, goal setting, and putting your plan into action.

**LUNCH AND LEARN**

**June 29, 2021 from 12:00pm - 1:00pm** will be MCDEVCO’s first of our quarterly informational sessions for new entrepreneurs on *Where and How do I Start my Business!* The program will be virtual so you can grab your lunch and join the conversation wherever you are located! Sign up today to start your future with MCDEVCO.

**City of Wausau Small Business COVID-19 Disaster Funds**

Apply online today with MCDEVCO

1. \$1500.00 Grant
2. \$2500.00 IT Grant
3. Up to \$20,000.00 Forgivable Loan

[www.mcdevco.org/covid-19/resources/](http://www.mcdevco.org/covid-19/resources/)

**COVID-19 Disaster Funds**

MCDEVCO continues to administer funds for the City of Wausau to assist their small businesses. COVID-19 disaster funds that are currently available are a \$1500.00 grant, \$2500.00 IT grant, and up to \$20,000.00 forgivable loan to ensure the sustainability of small businesses. Please go to our website - [www.mcdevco.org/covid-19/resources/](http://www.mcdevco.org/covid-19/resources/) to fill out an application(s) to see if you qualify.



**Wausau Events is excited to once again Create Community Through Events with our 2021 Event Season!**

The most-loved and ever popular **Concerts on the Square** Series returns to the 400 Block for 10 Wednesday nights of tunes, fun and fellowship starting June 16 and running through August 18. The line-up includes many well-liked bands along with some local and newcomers to Wausau. Reminder that no blankets are to be left out reserving spots, no smoking on the 400 Block, no large tables and please leave pets at home. This way, we can ensure there will be room for everyone who wants to come and also the grass stays green! As always, there will be food trucks on site with your favorites. Concerts run from 6-8pm Wednesdays, June 16-August 18, 2021.

**Chalkfest** returns to Downtown Wausau July 10-11! Artists will create awe-inspiring drawings out of chalk right on the 400 Block. Food trucks will help to keep you full and the atmosphere will be sure to inspire you! This can't miss event runs all day Saturday and Sunday!

2021 marks the 30th year of **Big Bull Falls Blues Fest** and it is sure to be a fun event! Running August 20-21 on Fern Island, this event features nationally touring acts of Eric Gales, Mike Zito and more! Fern Island turns into a music lovers dream with quality music, great food and beverages and fun times. Tickets are now available and can be found on our website. The community is invited to enjoy the sounds and sights for the 30th year of Blues in Wausau!

**NEW this year** is Fireworks Family Fest on September 24 at the Wausau Airport! Featuring our LARGEST night of fireworks EVER! It will run from 4-10pm and include live music, kids games, food trucks, beverages and of course, fireworks! Join us for this incredible display of fireworks!

For additional and up-to-date information, please visit [www.wausauevents.org](http://www.wausauevents.org) or find us Facebook, Instagram or Twitter.

## Wausau Police Department

### Partnering With You With News You Can Use From Your Wausau PD



#### Selling a Vehicle in Wisconsin:

Anyone who sells a motor vehicle from one individual to another individual (i.e. private sale), including transferring a junk vehicle by bill of sale, must submit notification of the sale to the WI Dept. of Motor Vehicles (WisDOT).

#### Within 30 days of a sale the seller needs to report the following information to WisDOT:

- Vehicle identification number (VIN) of the vehicle
- Identity of the individual buyer
- Sale price
- Date of sale

To submit seller notification online you need:

- To be an owner of the vehicle (must be an individual, not a business)
- Your Wisconsin driver license or identification card number (or full name)
- The last four digits of your social security number (or full SSN)
- Your date-of-birth
- The vehicle identification number (VIN) for the vehicle

Once completed, you will have the option to print, email or save confirmation of your notification. Online submission:

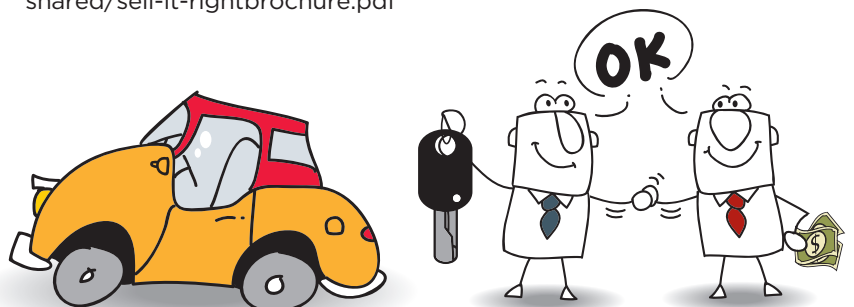
- Seller Notification Information: <https://wisconsindot.gov/Pages/online-srvcs/other-servs/seller-notify.aspx>
- Direct Link - WisDOT - Seller Notify

#### What should I do with my license plates?

If you are selling your car, truck, van, or motorcycle, then please remove your license plates before allowing the new owner to drive away - the license plates are still registered under your name.

For any questions or additional information, you may contact the Wisconsin DOT directly at (608) 266-1466 , or, review these online resources:

- **Selling a Vehicle** -- <https://wisconsindot.gov/pages/dmv/vehicles/sll-jnk-vhcl/sellyourvehicle.aspx>
- **Points to Remember** -- <https://wisconsindot.gov/pages/dmv/vehicles/sll-jnk-vhcl/sold.aspx>
- **Sell-It-Right Brochure** -- <https://wisconsindot.gov/documents/dmv/shared/sell-it-rightbrochure.pdf>







# YOU CAN CHANGE A COMMUNITY



## Join the Good News Project Community of Volunteers!

Good News Project, a Wausau non-profit, is in need of volunteers who want to serve their community! We have many different opportunities in our **e-CYCLING** Program and **Health Equipment Lending Program!**

Your small action *today* can lead to a big change for our community - and our earth - *tomorrow!*

Visit our website to learn more, or fill out a volunteer application:

[www.goodnewswi.com](http://www.goodnewswi.com)

OR

Call us at 715-843-5985

**STOP IN TODAY.  
BRING A FRIEND,  
OR MAKE A NEW  
ONE.**

**WE PROVIDE EASY  
SCHEDULING, WITH  
FLEXIBLE DAYS, TIMES  
& HOURS**

**MONDAY-FRIDAY  
9AM-4PM  
E-CYCLING FRIDAYS ONLY  
9AM-4PM**

**1106 N. FIFTH ST.  
WAUSAU, WI  
54403**

## The Grand Theater

# THE BEST OF BROADWAY

Presented by the Central Wisconsin Jerry Ensemble

The Grand Theater, Wausau, WI

Having just announced their 2021/22 Season with events beginning in August, The Grand Theater is thrilled to be getting back to doing what they do best, presenting live performances. But while the historic theater sat empty for the past year, The Grand had to get creative with how they presented music and theater to audiences.

The Grand Theater's high school student performance group, the Central Wisconsin Jerry Ensemble, was used to performing at all kinds of live events: outdoor farmers markets, school events, before Broadway shows at The Grand, and even their own Cabaret performance. But when the pandemic tabled all of these performances, not to mention their own high school musicals, the group had to find a new way to learn about, rehearse, and perform their musical theater numbers.

Since the stage of the historic Grand Theater was still dark and the seats still empty, the staff of The Grand worked to turn the space into a makeshift recording studio for the Ensemble to create a new virtual series, "The Best of Broadway." Each episode of the series focuses on a particular era in musical theater history, from the Jazz Age of the 1920s and '30s, to the British megamusicals of the 1980s, and beyond. The students "rehearsed" via Zoom, and met up for one afternoon each month to record their solos, duets, and trios in person. Microphones set up 12

feet apart (as recommended by the American Choral Directors Association) recorded the students' vocals through the theater's sound system, cameras filming from multiple angles, and the beautiful stage of The Grand Theater lit up specifically for them resulted in high-quality, professional-looking recordings of their performances.

Not only are these videos excellent pieces for the students to include in their portfolios and share with their friends and families, but the community has grown to enjoy them as well. Each episode premieres on Facebook and YouTube, where the performances are viewed by thousands of people. The series has become a great piece of original content for The Grand, in addition to an educational experience for the students.

Wausau West High School senior Olivia Mathis has been part of the Central Wisconsin Jerry Ensemble for three years, and is thankful for the opportunity to perform during the last few months before she moves to New York City for college. "Even though this year looks a lot different for the Jerry Ensemble than we had expected, we're still finding ways to make the most out of it," said Mathis. "I know for me, personally, this has been a great learning experience, as I hadn't done many virtual projects until this year. It's been allowing me to focus more on my personal musicianship and acting. This

new, socially distanced way of singing together is definitely new to the group, but it has been a lot of fun, and I'm grateful to get to continue performing and creating."

With the final episode of "The Best of Broadway" slated to premier mid-June, both the students and The Grand's staff are proud of the work the Ensemble has done to present virtual performances, but they can't wait to get back to performing live.

"The students have really stepped up this year and made the best of a disappointing situation," said Katy Lang, Director of Education & Community Engagement at The Grand and one of the Ensemble's directors. "I am so proud of the initiative they have shown in learning multiple songs and performing them so professionally. It's been great to watch them grow as individual performers, but I cannot wait until we can see them all on stage together again with a live audience!"

All four currently-released episodes of The Central Wisconsin Jerry Ensemble Presents "The Best of Broadway" are available on The Grand Theater's YouTube channel at <https://www.youtube.com/c/TheGrandTheaterWausau>. For more information on the return of live events at The Grand, visit [www.grandtheater.org](http://www.grandtheater.org) and see what exciting shows are coming to Wausau this year!



MARTIN JENICH



# Woodson Art Museum

Leigh Yawkey  
**Woodson**  
Art Museum

## Woodson Art Museum Summer Exhibition Features Quilts as Maps

Like roadmaps, quilts in an exhibition at the Leigh Yawkey Woodson Art Museum this summer reveal places of origin and paths to understanding America's cultural fabric. "Handstitched Worlds: The Cartography of Quilts," on view June 12 through August 29, features quilts spanning the nineteenth to twenty-first centuries from the collection of the American Folk Art Museum in New York City. Representing a range of materials, motifs, and techniques, the exhibition's quilts include traditional early American examples and contemporary sculptural assemblages.

A quilt-maker's textile and design choices offer insights into the topography of the artist's world and place within it. The motif in Nora McKeown Ezell's "Star Quilt" evokes the celestial navigation used by slaves on the Underground Railroad. The quilt's traditional eight-pointed Star of Hope pattern is drawn from the artist's knowledge of the history of slavery, Reconstruction, and post-Reconstruction in the Jim Crow South.

Woven into quilts are threads of history and makers' orienteering questions: "Where do I fit into this landscape? Where have I been? Where will I go?" Exhibition quilts incorporate wool from suits and military uniforms, cotton, synthetics, silk velvet, and brocade with embroidery. Infused with memory, quilts map out intimate stories and legacies through a handcrafted language of design.

"Handstitched Worlds: The Cartography of Quilts" was organized by the American Folk Art Museum, New York and is toured by International Arts & Artists, Washington, D.C. Wausau Homes is the presenting sponsor of the summer exhibition; 5 Koshas Yoga and Wellness is the summer sponsor. Additional support comes from Jeff and Lori De Lonay, Gwen Gygi, Linda Kocourek, LeeAnn Podruch and David Johnson, and Ron and Mary Retzke. Exhibitions and programs are supported in part by a grant from the Wisconsin Arts Board with funds from the State of Wisconsin and the National Endowment for the Arts. Marketing supported in part by City of Wausau Room Tax funds. Support

for hands-on art-making supplies comes from Wilmington Trust and the M&T Charitable Foundation.

### "Pacific Quilt," also on view June 12 – August 29, 2021

On view concurrently – although distinct from "Handstitched Worlds" – is a giant, map-like quilt, created by Sarah FitzSimons, a University of Wisconsin-Madison Art Department faculty artist. Her "Pacific Quilt" features varying shades of blue fabric to convey the Pacific Ocean's underwater topography and sewn lines depicting surface currents. FitzSimons notes other commonalities: "Both water and fabric flow. Both cover. Both can conceal, reveal, and shift. 'Pacific Quilt' proposes a link between our daily cycle of sleeping and waking, with the rise and fall of ocean tides."

### Program Possibilities

Night Out @ the Woodson, when the Museum stays open until 7:30 p.m. on the first Thursday of each month, offers opportunities for evening strolls through the galleries and grounds. Those summer evenings on June 3, July 1, and August 5 include Sculpture Garden Yoga, if weather permits these outdoor-only sessions, led by a 5 Koshas Yoga and Wellness instructor, 5:30-6:30 p.m. Please register at [www.5koshasyoga.com/yoga/class-schedule/](http://www.5koshasyoga.com/yoga/class-schedule/) and plan to bring and wear face coverings as well as bring mats or blankets. Session will be canceled if weather requires; watch the 5 Koshas Facebook page for updates.

Although other programs remain curtailed, a few may be offered, modified as coronavirus precautions warrant, for registered participants. Check [www.lywam.org/events-calendar](http://www.lywam.org/events-calendar) for details, posted online when available.

### Art Park

See what's new in the re-imagined Art Park interactive gallery, offering drop-in family fun. Explore hands-free, visual engagement opportunities for all ages and I Spy prompts and clues for younger visitors.

- Mini Makes includes new miniature versions of additional galleries, museum experiences, and

exhibitions created by the staff's Wee Build Workshop along with brief videos.

- Makers' Mediums features studio materials and artists' tools, celebrating endless art-medium possibilities.

### Additional Options

The Museum's Stop-by Studio, always open for anytime curbside pickup along 12th Street, is stocked with Art Kits and books, free to keep or share, to encourage at-home art making and creativity. Go on a quest, using a Sculpture Seek & Find map with riddles as clues, to find six small-scale sculptures on the Museum's grounds. Explore online options, too, including videos, activities, and searching collection artwork by artist name, medium, or bird or animal species by checking out the digital resources webpage: <https://www.lywam.org/learn-do/digital-resources/>

Woodson Art Museum admission is always free and health-conscious measures remain in place: mask wearing, physical distancing, and sanitizing; learn more here. Before visiting, always admission free, please check [www.lywam.org](http://www.lywam.org) for any updates.

For more information, visit [www.lywam.org](http://www.lywam.org), e-mail the Museum at [info@lywam.org](mailto:info@lywam.org), call 715-845-7010, and follow us on Facebook, Twitter, and Instagram.

### Woodson Art Museum Hours:

- Tuesday – Friday, 9am – 4pm
- First Thursday of each month, 9am – 7:30pm
- Saturday – Sunday, Noon – 5pm
- Closed Monday & holidays, including New Year's Day, Easter, July 4, Thanksgiving, Christmas Eve, Christmas

**Admission: Always Free Admission**

**Phone:** 715.845.7010

**E-mail:** [info@lywam.org](mailto:info@lywam.org)

**Location:** Franklin and 12th Streets, Wausau, Wisconsin 54403-5007 (700 North Twelfth Street)

**Online:** [www.lywam.org](http://www.lywam.org)

# Monk Botanical Gardens

## *Welcomes You to the Gardens this Summer!*

An Urban Oasis is how Monk Botanical Gardens has been described by thousands of visitors. Green space for the community to learn, engage and renew is a valuable commodity. Monk Botanical Gardens occupies a 30-acre property on Wausau's west side. Since the creation of our site, tremendous improvements have been made to the property through generous donations of time, talent, and funds. This season, enjoy a walk through the Wildflower Woods, Memory Garden, the spectacular Treehouse, Meditation Garden, and more. There is no fee to enjoy the space, but donations are always appreciated (suggested \$5 per person). The garden is accessible to all from 7am - 7pm.

Aside from being a space for nature and reprieve, the Gardens has a full line-up of events that kick off in June! Join us outdoors every Tuesday from 4:30pm - 8:30pm at the gardens for live music, local food, and drinks!

Throughout the summer are wonderful opportunities to enjoy Theatre outside. In partnership with Out of the Woods Theatre, we are happy to present Marian, the True Tale of Robin Hood, on June 17th, 18th, and 19th, at 6:30pm each night. July 23rd, from 6:30pm - 8:30pm, we'll be hosting a one-of-a-kind Alice in Wonderland tea party for adults. Mingle with Alice characters and enjoy party-themed mocktails, wine, and refreshments. The following day, July 24th premieres Alice in the Gardens! Showings are to take place from 9am-11am and 12:30-2:30pm. Imagination runs wild, and logic is abandoned in this fantastical, interactive,

and nonsensical event. These events feature local beer, food trucks, and refreshments! We are happy to bring back our Booze & Botany event this year on July 15, 2021 from 6pm-10pm at Timekeeper Distillery. Join Wausau's finest mixologists and chefs, offering a curated selection of fresh and unique ingredients, providing guests with fun drink and food pairings.

We'll round out the season with Shakespeare in the Gardens and a Children's Shakespeare Festival from August 12th through the 14th! By day, bring the whole family for A Midsummer Night's Dream, celebrate the fun and comedy of the play through an interactive performance. In the evening, doors open each day at 5pm and showings at 6pm of Shakespeare's Twelfth Night! Monk Botanical Gardens is also proud to have various opportunities to get children outdoors all summer long. Camp is available for children grades 1st - 5th all summer long. We make sure the activities are developmentally appropriate, educationally relevant, and, most importantly, fun! At the Gardens, campers will learn about relevant environmental subjects through hands-on activities, work together with their peers, and spend time outdoors!

**For a complete summer line-up and event details, head to:**  
<https://www.monkgardens.org/page/special-events>

**Register your child for Summer Camp here:**  
<https://www.monkgardens.org/page/camps>



# 2021 Garbage and Recycling Collection Calendar

Please refer to the table and calendar to determine your recycling and garbage pick-up day. If you have any questions as to whether you live in a blue or yellow collection area, call City Hall at 261-6500.

Recycling carts should be set out with garbage containers between the hours of 3:00 pm the day prior to collection day and should be removed from the curbside area by 11:00 a.m. the day after pick-up. Recycling containers have a green lid and Garbage containers have a blue lid. Garbage pick-up is every week and Recycling cart pick-up is every other week. Placement of the carts at the curbside need to be placed at least 4 feet from other objects such as other carts, mailboxes and trees to accommodate the mechanical arm as it grips the cart and empties its contents. Thank you! **Keep this schedule for future reference and remember the holiday schedule of a "day delay" pick-up.**

## West Side of Wisconsin River

	Garbage P/U	Recycling P/U
North of W. Wausau Avenue	Monday	Monday - BLUE
North of Elm St, South of W. Wausau Ave, & East of USH 51	Monday	Monday - YELLOW
South of Elm St & North of Stewart Ave, including entire area west of USH 51	Tuesday	Tuesday - BLUE
South of Stewart Ave & North of Thomas St.	Tuesday	Tuesday - YELLOW
South of Thomas Street	Wednesday	Wednesday - BLUE

## East Side of Wisconsin River

North of Marquardt Rd & East of railroad tracks	Wednesday	Wednesday - BLUE
North of Nina Ave & South of Marquardt Rd including homes west of the railroad tracks to Evergreen Rd.	Wednesday	Wednesday - YELLOW
South of Nina Ave & North of Hamilton St	Thursday	Thursday - BLUE
South of Hamilton St & North of Kickbusch St.	Thursday	Thursday - YELLOW
South of Kickbusch St. North of McDonald St & East of Northwestern Rd.	Friday	Friday - BLUE
South of McDonald St & entire area west of Northwestern Rd.	Friday	Friday - YELLOW

January							February							March							April						
S	M	T	W	T	F	S	S	M	T	W	T	F	S	S	M	T	W	T	F	S	S	M	T	W	T	F	S
					1	2	1	2	3	4	5	6	1	2	3	4	5	6				1	2	3			
3	4	5	6	7	8	9	7	8	9	10	11	12	13	7	8	9	10	11	12	13	4	5	6	7	8	9	10
10	11	12	13	14	15	16	14	15	16	17	18	19	20	14	15	16	17	18	19	20	11	12	13	14	15	16	17
17	18	19	20	21	22	23	21	22	23	24	25	26	27	21	22	23	24	25	26	27	18	19	20	21	22	23	24
24	25	26	27	28	29	30	28							28	29	30	31				25	26	27	28	29	30	
31																											
May							June							July							August						
S	M	T	W	T	F	S	S	M	T	W	T	F	S	S	M	T	W	T	F	S	S	M	T	W	T	F	S
						1			1	2	3	4	5				1	2	3	1	2	3	4	5	6	7	
2	3	4	5	6	7	8	6	7	8	9	10	11	12	4	5	6	7	8	9	10	8	9	10	11	12	13	14
9	10	11	12	13	14	15	13	14	15	16	17	18	19	11	12	13	14	15	16	17	15	16	17	18	19	20	21
16	17	18	19	20	21	22	20	21	22	23	24	25	26	18	19	20	21	22	23	24	22	23	24	25	26	27	28
23	24	25	26	27	28	29	27	28	29	30				25	26	27	28	29	30	31	29	30	31				
30	31																										
September							October							November							December						
S	M	T	W	T	F	S	S	M	T	W	T	F	S	S	M	T	W	T	F	S	S	M	T	W	T	F	S
						1						1	2		1	2	3	4	5	6				1	2	3	4
5	6	7	8	9	10	11	3	4	5	6	7	8	9	7	8	9	10	11	12	13	5	6	7	8	9	10	11
12	13	14	15	16	17	18	10	11	12	13	14	15	16	14	15	16	17	18	19	20	12	13	14	15	16	17	18
19	20	21	22	23	24	25	17	18	19	20	21	22	23	21	22	23	24	25	26	27	19	20	21	22	23	24	25
26	27	28	29	30			24	25	26	27	28	29	30	28	29	30					26	27	28	29	30	31	

SAVE THIS SCHEDULE





## CITY OF WAUSAU

407 Grant Street  
Wausau, WI 54403

PRSR STD  
U.S. POSTAGE  
PAID  
Permit No. 600  
Wausau, WI

\*\*\*ECRWSS\*\*\*

### Mayor

Katie Rosenberg  
407 Grant St  
715-261-6800  
katie.rosenberg@ci.wausau.wi.us



### City Council Representatives

All mail for Alderpersons  
can be sent to:  
City Hall  
407 Grant Street  
Wausau, WI 54403

### District 1

Patrick Peckham  
715-845-1396  
patrick.peckham@ci.wausau.wi.us



### District 2

Michael Martens  
michael.martens@ci.wausau.wi.us



### District 3

Tom Kilian  
715-571-8108  
tom.kilian@ci.wausau.wi.us



### District 4

Tom Neal  
tom.neal@ci.wausau.wi.us



### District 5

James Wadinski  
715-261-6839  
james.wadinski@ci.wausau.wi.us



### District 6

Rebecca McElhaney  
715-261-6830  
becky.mcelhaney@ci.wausau.wi.us



### District 7

Lisa Rasmussen  
715-261-6832  
lisa.rasmussen2@ci.wausau.wi.us



### District 8

Sarah Watson  
715-261-6833  
sarah.watson@ci.wausau.wi.us



### District 9

Dawn Herbst  
715-842-8347  
dawn.herbst@ci.wausau.wi.us



### District 10

Louis Larson  
715-574-7099  
lou.larson@ci.wausau.wi.us



### District 11

Debra Ryan  
715-803-4909  
debra.ryan@ci.wausau.wi.us



## POSTAL PATRON





# WAUSAU WATERWORKS

FOR YOU!

important water quality information enclosed

Dlaim ntawv  
tshaabxu  
nuav muaj lug  
tseemceeb heev  
nyob rua huv  
hws has txug cov  
dlej mej haus.  
Kuas it tub paab  
txhais rua koj,  
los nrug ib tug  
kws paub lug  
thaam.

Este informe  
contiene  
información  
importante  
acerca de su  
agua potable.  
Haga que  
alguien lo  
traduzca para  
usted, o hable  
con alguien que  
lo entienda.

## YEARLY Water Quality Report 2020

The Wausau Water Department is pleased to present its yearly Water Quality Report. The Environmental Protection Agency (EPA) and the Department of Natural Resources (DNR) require that the water suppliers provide a yearly report indicating the quality and the source of water to the general public.

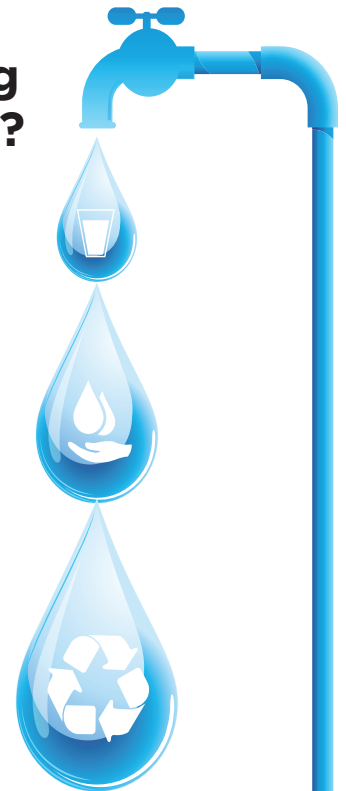
The quality of our water surpasses every state and federal regulation without exception. This consumer report contains interesting information such as: results of the quality tests of the water, definitions, origin of the water supply, how to reduce lead exposure in drinking water, and a note for people with compromised immune systems. For more information about this report, call Scott Boers, Water Plant Superintendent at 715-261-7286.

### Quick now, in which season Summer, Fall, Winter or Spring do people use the most water?

The answer is Summer, and it's because we use a lot of water outside around our property. In fact, in the U.S. more water is used for lawn and garden irrigation than anything else.

Wausau's Wauter Savvy Program is designed to help you reduce your water use and save money. Here are a few helpful tips for smart water consumption this summer:

- Use a broom to sweep sidewalks and driveways, not a hose. Doing so can save you up to 30 gallons for every five minutes you don't use the hose.
- Wash your car at the car wash, not in your driveway or backyard. You'll save valuable water and avoid sending soapy foul water down the storm drain and into the river.
- Adjust sprinkler heads and fix leaks. Water your lawn or garden in the cool morning hours to reduce evaporation. The average lawn requires water every 4 to 8 days. A 100' x 100' lawn uses 6,230 gallons of water every time you turn on the sprinklers!
- Set your lawn mower blades to 3 inches. Trimming your grass higher encourages deeper roots and holds moisture better, so less lawn watering is needed.



Even better, if you're one of the folks who ordered a City of Wausau rain barrel this summer, you'll save even more, plus giving your plantings and gardens fresh non-chlorinated water to drink.

**Be Wauter Savvy this Summer! Save water and save money.**

## Lead & Copper

As a result of materials used in your home's plumbing, it is possible that lead levels at your home may be higher than at other homes in the community. If present, elevated levels of lead can cause serious health problems, especially for pregnant women and young children. Infants and children who drink water containing lead in excess of the action level could experience delays in their physical or mental development. They could also show slight deficits in attention span and learning abilities. Adults who drink this water over many years could develop kidney problems or high blood pressure. Lead in drinking water is primarily from materials and components associated with service lines and home plumbing. Wausau Water Works is responsible for providing high quality drinking water, but cannot control the variety of materials used in plumbing components. When your water has been sitting for several hours, you can minimize the potential for lead exposure by flushing your tap for 30 seconds to 2 minutes before using water for drinking or cooking. Information on lead in drinking water, testing methods, and steps you can take to minimize exposure is available from the Safe Drinking Water Hotline or at [www.epa.gov/safewater/lead](http://www.epa.gov/safewater/lead). Additional information is also available from the Safe Drinking Water Hotline from EPA, 1-800-426-4791.

## Educational Information

The sources of drinking water, both tap water and bottled water, include: rivers, lakes, streams, ponds, reservoirs, springs, and wells. By nature, some substances dissolve into the water. As water travels over the surface of the land or through the ground, it dissolves naturally occurring minerals and, in some cases, radioactive material, and can pick up substances resulting from the presence of animals or from human activity.

Contaminants that may be present in source water include:

- Microbial contaminants, such as viruses and bacteria, which may come from sewage treatment plants, septic systems, agricultural livestock operations and wildlife.
- Inorganic contaminants such as salts and metals, which can be naturally- occurring or result from urban storm water runoff, industrial or domestic wastewater discharges, oil and gas production, mining or farming.
- Pesticides and herbicides, which may come from a variety of sources such as agriculture, urban storm water runoff and residential uses.
- Organic chemical contaminants, including synthetic and volatile organic chemicals, which are by-products of industrial processes and petroleum production, and can also come from gas stations, urban storm water runoff and septic systems.
- Radioactive contaminants, which can be naturally occurring or be the result of oil and gas production and mining activities.

In order to ensure that tap water is safe to drink, EPA prescribes regulations that limit the amount of certain contaminants in water provided by public water systems. FDA regulations establish limits for contaminants in bottled water, which shall provide the same protection for public health.





## Definitions of Terms

**Action Level (AL)** – the concentration of a contaminant which, if exceeded, triggers treatment or other requirements which a water system must follow. The Action Level is reported to the 90th of homes at risk.

**Level 1 Assessment** – A Level 1 assessment is a study of the water system to identify potential problems and determine, if possible, why total coliform bacteria have been found in our water system.

**Level 2 Assessment** – A Level 2 assessment is a very detailed study of the water system to identify potential problems and determine, if possible, why an E. coli MCL violation has occurred or why total coliform bacteria have been found in our water system, or both, on multiple occasions.

**Maximum Contaminant Level (MCL)** – is the highest level of a contaminant that is allowed in drinking water.

**MCLG** – Maximum Contaminant Level Goal (MCLG) is a level of a contaminant in drinking water below which there is no known or expected risk to health.

**Parts Per Billion (PPB)** – some water constituents are measured in units that are really small. A PPB is a microgram per liter (ug/l) - For example, a part of a billion equates to two drops of water in a house pool of 15,000 gallons; or a second of time in 31.7 years, or the first 16 inches of a trip to the moon.

**Parts Per Million (PPM)** – A PPM equates a milligrams per liter (mg/l) - one part per million corresponds to ¼ of a cup in a house pool of 15,000 gallons, a second of time in 11.6 days.

**Picocuries per liter (pCi/l)** – a measure of radioactivity

**ND** – None detected in the drinking water.

**TCR**- Total Coliform Rule.



## Health Information

If present, elevated levels of lead can cause serious health problems, especially for pregnant women and young children. Lead in drinking water is primarily from materials and components associated with service lines and home plumbing. Wausau Water Works is responsible for providing high quality drinking water, but cannot control the variety of materials used in plumbing components. When your water has been sitting for several hours, you can minimize the potential for lead exposure by flushing your tap for 30 seconds to 2 minutes before using water for drinking or cooking. If you are concerned about lead in your water, you may wish to have your water tested. Information on lead in drinking water, testing methods, and steps you can take to minimize exposure is available from the Safe Drinking Water Hotline or at [www.epa.gov/safewater/lead](http://www.epa.gov/safewater/lead). Additional information is also available from the Safe Drinking Water Hotline from EPA, 1-800-426-4791.

## Contaminant Health Effects

Lead - Infants and children who drink water containing lead in excess of the action level could experience delays in their physical or mental development. Children could also show slight deficits in attention span and learning abilities. Adults who drink this water over many years could develop kidney problems or high blood pressure.



## Detected Contaminants

Your water was tested for many contaminants last year. We are allowed to monitor for some contaminants less frequently than once a year. The following tables list only those contaminants which were detected in your water. If a contaminant was detected last year, it will appear in the following tables without a sample date. If the contaminant was not monitored last year, but was detected within the last 5 years, it will appear in the tables below along with the sample date.

## Disinfection Byproducts

Contaminant (units)	Site	MCL	MCLG	Level Found	Range	Sample Date (if prior to 2019)	Violation	Typical Source of Contaminant
HAA5 (ppb)	D-16	60	60	10	10		No	By-product of drinking water chlorination
TTHM (ppb)	D-16	80	0	5.4	5.4		No	By-product of drinking water chlorination
HAA5 (ppb)	D-7	60	60	10	10		No	By-product of drinking water chlorination
TTHM (ppb)	D-7	80	0	2.9	2.9		No	By-product of drinking water chlorination

## Inorganic Contaminants

Contaminant (units)	Site	MCL	MCLG	Level Found	Range	Sample Date (if prior to 2019)	Violation	Typical Source of Contaminant
ARSENIC (ppb)		10	n/a	1	1		No	Erosion of natural deposits; Runoff from orchards; Run off from electronics production wastes
BARIUM (ppm)		2	2	0.007	0.006 - 0.007		No	Discharge of drilling wastes; Discharge from metal refineries; Erosion of natural deposits
FLUORIDE (ppm)		4	4	0.5	0.4-0.5		No	Erosion of natural deposits; Water additive which promotes strong teeth; Discharge from fertilizer and aluminum factories
NITRATE (NO <sub>3</sub> -N) (ppm)		10	10	0.55	0.55		No	Runoff from fertilizer use; Leaching from septic tanks, sewage; Erosion of natural deposits
NITRITE (NO <sub>2</sub> -N) (ppm)		1	1	0.055	0.047-0.055		No	Runoff from fertilizer use; Leaching from septic tanks, sewage; Erosion of natural deposits
SELENIUM (ppb)		50	50	1	0-1		No	Discharge from petroleum and metal refineries; Erosion of natural deposits; Discharge from mines
SODIUM (ppm)		n/a	n/a	18.00	17.00-18.00		No	n/a

Contaminant (units)	Action Level	MCLG	90th Percentile Level Found	# of Results	Sample Date (if prior to 2019)	Violation	Typical Source of Contaminant
COPPER (ppm)	AL=1.3	1.3	0.0110	0 of 30 results were above the action level.		No	Corrosion of household plumbing systems; Erosion of natural deposits; Leaching from wood preservatives
LEAD (ppb)	AL=15	0	5.80	0 of 30 results was above the action level.		No	Corrosion of household plumbing systems; Erosion of natural deposits

### Radioactive Contaminants

Contaminant (units)	Site	MCL	MCLG	Level Found	Range	Sample Date (if prior to 2019)	Violation	Typical Source of Contaminant
RADIUM, (226 + 228) (pCi/l)		5	0	1.1	0.0 - 1.1		No	Erosion of natural deposits
GROSS ALPHA, EXCL. R & U (pCi/l)		15	0	1.0	0.1- 1.0		No	Erosion of natural deposits

### Synthetic Organic Contaminants including Pesticides and Herbicides

Contaminant (units)	Site	MCL	MCLG	Level Found	Range	Sample Date (if prior to 2019)	Violation	Typical Source of Contaminant
ATRAZINE (ppb)		3	3	0.0	0.0		No	Runoff from herbicide used on row crops

### Unregulated Contaminants

Unregulated contaminants are those for which EPA has not established drinking water standards. The purpose of unregulated contaminant monitoring is to assist EPA in determining the occurrence of unregulated contaminants in drinking water and whether future regulation is warranted. EPA required us to participate in this monitoring.

Contaminant (units)	Level Found	Range	Sample Date (if prior to 2019)
SULFATE (ppm)	9.00	8.69 - 9.0	
BROMIDE (ppb)	29.7615	29.344- 30.179	1/8/2018 & 7/23/2018
HAA5 (ppb)	12.92975	9.049- 18.562	1/8/2018 & 7/23/2018
HAA6Br (ppb)	.44375	.697	1/8/2018 & 7/23/2018
HAA9 (ppb)	13.3735	9.049- 19.191	1/8/2018 & 7/23/2018
MANGANESE (ppb)	17.00525	1.616- 35.742	1/8/2018, 1/9/2018 & 7/23/2018
TOTAL ORGANIC CARBON (ppb)	5086.05	3956.1- 6191.7	1/8/2018 & 7/23/2018





## Schedule of Rates

EFFECTIVE JANUARY 1, 2021

### WAUSAU WATER WORKS

407 Grant Street - City Hall

Wausau, WI 54403-4783

Phone: 715 261-6530 • Fax: 715 261-6535

E-mail: waterworks@ci.wausau.wi.us

**Office Hours:** Monday-Friday 8:00 am-4:30 pm

### WATER RATES

EFFECTIVE JANUARY 1, 2021

#### Quarterly Service Charge (based on meter size)

5/8 Inch Meter . . . . .	\$24.81
3/4 Inch Meter . . . . .	24.81
1 Inch Meter . . . . .	40.62
1-1/4 Inch Meter . . . . .	55.47
1-1/2 Inch Meter . . . . .	69.72
2 Inch Meter . . . . .	106.83
3 Inch Meter . . . . .	174.00
4 Inch Meter . . . . .	264.00
6 Inch Meter . . . . .	474.00
8 Inch Meter . . . . .	720.00
10 Inch Meter . . . . .	1,047.00
12 Inch Meter . . . . .	1,371.00

#### Plus Volume Charge:

##### Residential Customers

All water used - \$2.91 per 100 cu. ft.

##### Non-Residential Customers

First 6,000 cu. ft. \$2.91 per 100 cu. ft.

Next 54,000 cu. ft. used - \$2.71 per 100 cu. ft.

Over 60,000 cu. ft. used - \$2.25 per 100 cu. ft.

##### Irrigation Class - All water used

\$4.35 per 100 cu. ft.

Bills for water and sewer service are issued quarterly and due the 20th of the month. A 1% late payment charge is added to the outstanding balance after the 20th of each month and is applicable to all customers. To avoid late payment charges, all bills must be received in the **office of the City Treasurer** by the due date printed on the front of the bill. Customers who pay at remote collection sites (grocery stores) are recommended to make payments prior to due dates to ensure timely receipt by the City Treasurer.

### PUBLIC FIRE PROTECTION FEES

EFFECTIVE JANUARY 1, 2021

#### Quarterly Service Charge (based on meter size)

5/8 Inch Meter . . . . .	\$13.14
3/4 Inch Meter . . . . .	13.14
1 Inch Meter . . . . .	32.76
1-1/4 Inch Meter . . . . .	48.45
1-1/2 Inch Meter . . . . .	65.49
2 Inch Meter . . . . .	104.79
3 Inch Meter . . . . .	198.00
4 Inch Meter . . . . .	327.00
6 Inch Meter . . . . .	654.00
8 Inch Meter . . . . .	1,047.00
10 Inch Meter . . . . .	1,575.00
12 Inch Meter . . . . .	2,100.00

### SEWER RATES

EFFECTIVE OCTOBER 1, 2020

#### Quarterly Service Charge (based on water meter size)

5/8 Inch Meter . . . . .	\$23.06
3/4 Inch Meter . . . . .	23.06
1 Inch Meter . . . . .	31.13
1-1/4 Inch Meter . . . . .	43.36
1-1/2 Inch Meter . . . . .	50.28
2 Inch Meter . . . . .	84.18
3 Inch Meter . . . . .	151.98
4 Inch Meter . . . . .	248.15
6 Inch Meter . . . . .	489.84
8 Inch Meter . . . . .	770.50

#### Plus Volume Charge

All volume, as recorded by the water meter each quarter shall be charged at the rate of \$3.75 per 100 cubic ft.

All customers are billed for sewer based on the amount of water used each quarter. Unmetered sewer rate is \$98.09 per quarter in the City and \$103.47 per quarter outside the City.

**PRIVATE FIRE PROTECTION CHARGES  
 EFFECTIVE JANUARY 1, 2021**

This service is for unmetered connections to the main for the purpose of supplying water to private fire protection systems such as automatic sprinkler systems, standpipes, (where same are connected permanently or continuously to the mains) and private hydrants.

2 Inch or Smaller Connection . . . . .	\$18.00
3 Inch Connection . . . . .	33.00
4 Inch Connection . . . . .	54.00
6 Inch Connection . . . . .	105.00
8 Inch Connection . . . . .	168.00
10 Inch Connection . . . . .	252.00
12 Inch Connection . . . . .	336.00
14 Inch Connection . . . . .	420.00
16 Inch Connection . . . . .	504.00

**CHARGES FOR TURNING ON SERVICE**

***Turn on valve at curb (includes meter installation if needed)***

During Normal Business Hours . . . . .	\$60.00
After Hours . . . . .	100.00

**LATERAL CONNECTIONS**

1" Water Lateral  
 Connection . . . . . Based on Time & Materials

1-1/2" or Larger Water  
 Lateral . . . . . Based on Time & Material

**MISSED APPOINTMENT FEES**

During Normal Business Hours . . . . .	\$60.00
After Hours . . . . .	100.00

**MISCELLANEOUS**

Payments Not Honored by Financial Institution . . . . .	\$45.00
--	---------

**Utility Commission  
 Meets Monthly**

The Wausau Water Works Commission typically meets the first Tuesday of each month at 1:30 p.m. in City Hall (some exceptions do apply).

If you'd like to learn more about Wausau Water Works, please feel free to attend any of our regularly scheduled Commission meetings. If you wish to have an item placed on the agenda for Commission consideration, please contact Michelle Weasler at 715-261-7289 two weeks prior to the next scheduled meeting.

Meeting agendas and minutes of prior meetings are available on the city website at [www.ci.wausau.wi.us](http://www.ci.wausau.wi.us) .

**Source of Wausau's  
 Drinking Water**

Wausau's drinking water comes from six municipal wells, all of which are located near the Wisconsin River. These wells range in depth of 95 feet to 160 feet and pump anywhere from 900 to 3000 gallons per minute.

From the wells, the water travels to our Water Treatment Plant where it undergoes treatment to remove iron and manganese. It then enters the distribution system made up of approximately 250 miles of mains that deliver the water from the Treatment Plant to close to 16,000 homes and businesses served by Wausau Water Works.

To obtain a summary of the source water assessment please contact, Scott Boers at (715) 261-7286.

## **Additional Health Information**

Drinking water, including bottled water, may reasonably be expected to contain at least small amounts of some contaminants. The presence of contaminants does not necessarily indicate that water poses a health risk. More information about contaminants and potential health effects can be obtained by calling the Environmental Protection Agency's safe drinking water hotline (800-426-4791).

Some people may be more vulnerable to contaminants in drinking water than the general population. Immunocompromised persons, such as persons with cancer undergoing chemotherapy, persons who have undergone organ transplants, people with HIV/AIDS or other immune system disorders, some elderly, and infants can be particularly at risk from infections.

These people should seek advice about drinking water from their health care providers. EPA/CDC guidelines on appropriate means to lessen the risk of infection by cryptosporidium and other microbial contaminants are available from the Environmental Protection Agency's safe drinking water hotline (800-426-4791).



## **Wausau Water Works Payment Options:**

- Pay online at our customer web portal at [wausauwi.azurewebsites.net](http://wausauwi.azurewebsites.net)
- Pay by phone at 1-833-610-5707 (option #5)
- Mail in payment or pay in person