



Greetings Wausau.

As I write this introduction letter, the Finance Director and I are meeting with every department to finalize the budget that we will then turn over to the City Council's Finance Committee. It's going to be a tough budget for the City this year. You are probably dealing with similar budgeting challenges like increasing health care premium costs, inflation, and ensuring employees' needs are being met. The City of Wausau's spending is statutorily restricted by the Wisconsin State Legislature's levy limits. However, in addition to those levy limits, Wausau also adheres to the state of Wisconsin's Expenditure Restraint Program. That allows us to get a couple hundred thousand more dollars from the state if we keep our budget in check. We plan to continue doing just that. If you are interested in the budget process, keep an eye on the October city calendar - there will be budget workshops throughout the month, including a budget public hearing in November.

Additionally, Wausau Water Works has begun testing on the new Drinking Water Treatment Facility. We expect it to be fully functional sometime this fall and that means PFAS will be reduced across the board to between 0 and 20 parts per trillion. The Wausau Water Works Commission is working through the final planning pieces of the granular activated carbon system that will drop PFAs levels, among other emerging contaminants, to below the current testing standards. That is expected to be online in the beginning of 2024.

We're also getting ready to say goodbye to long-time Metro Ride Director Greg Seubert. After 40 years of working on Wausau's transit system, he's preparing to take some much-earned time for himself and his family. We are sad to say goodbye but excited for him. The search is currently underway for Wausau's next Transit Director who we hope to onboard before Greg leaves us in early 2023. Good luck Greg!

Lastly, the November election is heating up. Make sure you're registered to vote and are paying attention to the ever changing in-person absentee and absentee voting by mail rules. If you have questions, call the Clerk's office where they have the most up to date information on how you can safely and securely vote.

Have a great autumn and winter. It's hard to believe we're already here.

New Drinking Water Treatment Facility Starting Up

See Page 9

Mission Statement... In response to our citizens, we will provide services in the most effective manner in order to promote and enhance our living environment. Plan and encourage positive growth. Promote a positive community image by encouraging citizen involvement and civic pride.

Inside this Issue

Leaf Collection Schedules	2
Community Development Can Help you Buy a Home	4
Group Workcamps Program	4
November 8 Election Day	5
Winter Preparedness	6
Betterbin Recycling App	6
Holiday Trees Needed	6
Overnight Department of Inspections, Zoning & Electrical	7
WWW Schedule of Rates	8
WWW Delinquent Notices	9
WWW Cross Connection Survey	9
WWW Water Treatment Facility Starting Up	9
Parking	10
Halloween Safety Tips	10
Holiday Safety	11
Wausau Events Fall Schedule	12

City Hall

407 Grant St.
Wausau, WI 54403
715-261-6500
General Hours: M-F, 8-4:30

2022 Leaf Pick Up

★ Yard Waste Site - 105 E Chellis St

ZONE, WEEK

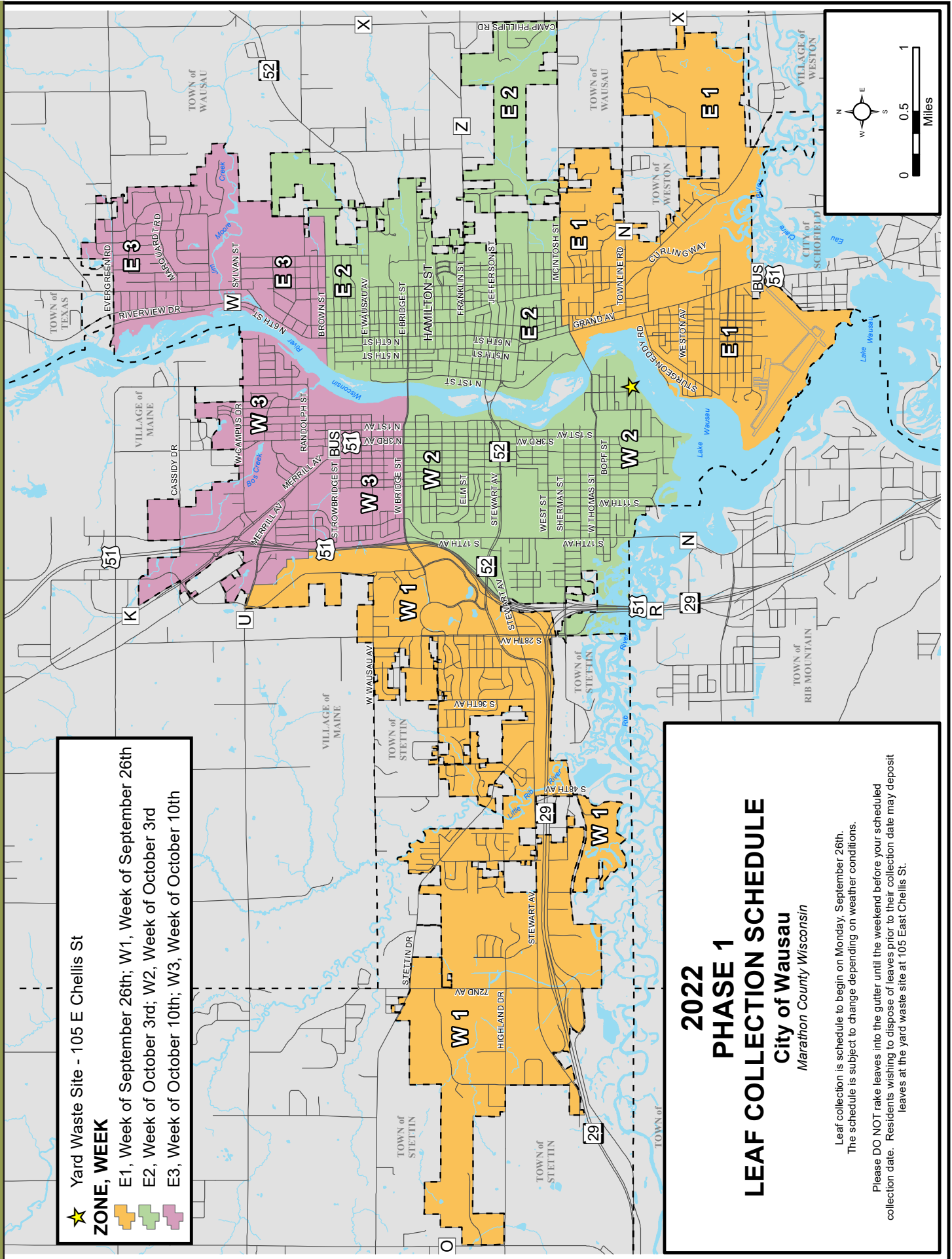
- E1, Week of September 26th
- E2, Week of October 3rd
- E3, Week of October 10th

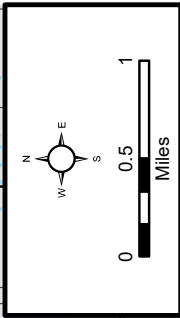
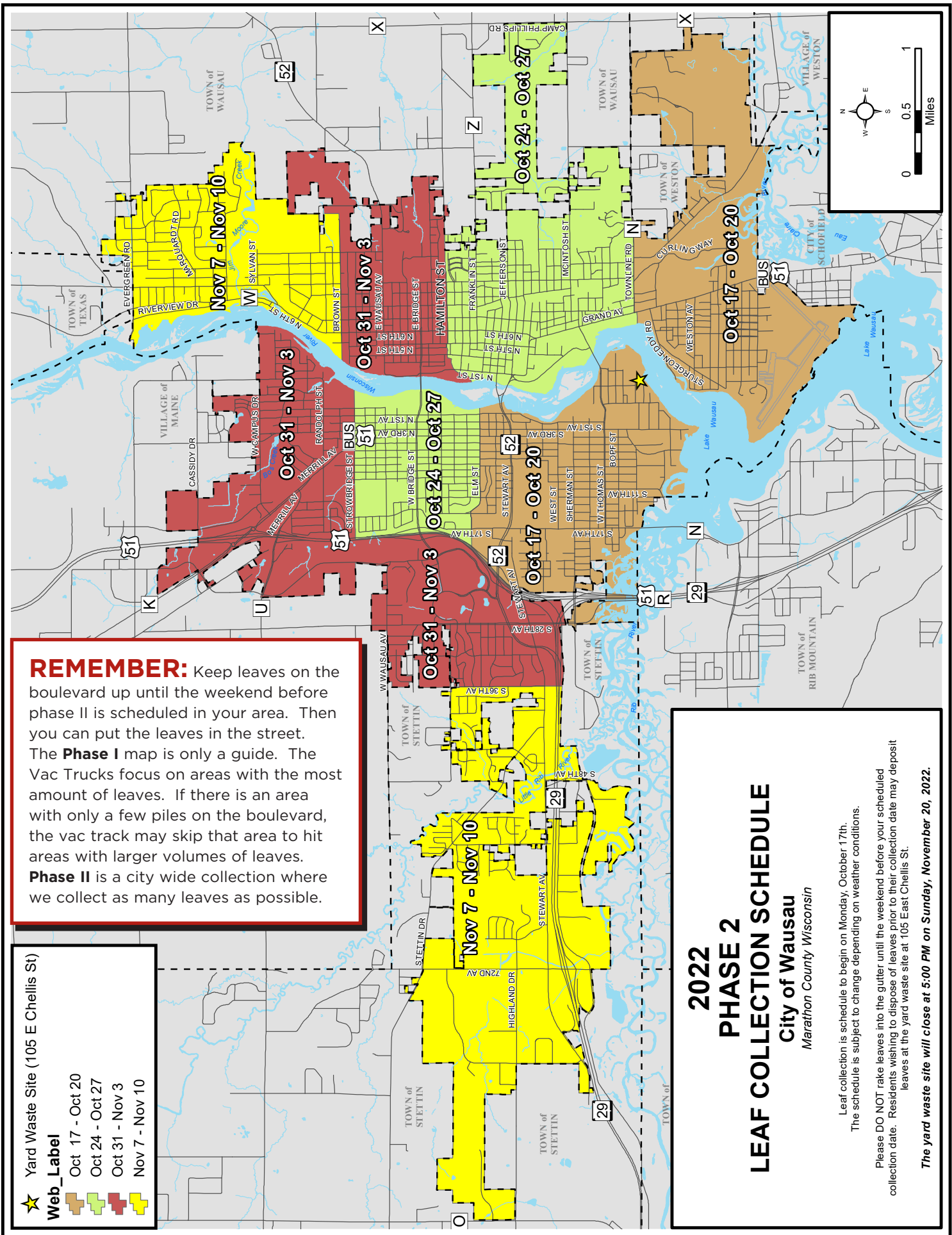
2022 PHASE 1 LEAF COLLECTION SCHEDULE

City of Wausau
Marathon County Wisconsin

Leaf collection is scheduled to begin on Monday, September 26th. The schedule is subject to change depending on weather conditions.

Please DO NOT rake leaves into the gutter until the weekend before your scheduled collection date. Residents wishing to dispose of leaves prior to their collection date may deposit leaves at the yard waste site at 105 East Chellis St.





REMEMBER: Keep leaves on the boulevard up until the weekend before phase II is scheduled in your area. Then you can put the leaves in the street. The **Phase I** map is only a guide. The Vac Trucks focus on areas with the most amount of leaves. If there is an area with only a few piles on the boulevard, the vac track may skip that area to hit areas with larger volumes of leaves. **Phase II** is a city wide collection where we collect as many leaves as possible.

★ Yard Waste Site (105 E Chellis St)

Web_Label

- Oct 17 - Oct 20
- Oct 24 - Oct 27
- Oct 31 - Nov 3
- Nov 7 - Nov 10

2022 PHASE 2 LEAF COLLECTION SCHEDULE

City of Wausau
Marathon County Wisconsin

Leaf collection is schedule to begin on Monday, October 17th.
The schedule is subject to change depending on weather conditions.

Please **DO NOT** rake leaves into the gutter until the weekend before your scheduled collection date. Residents wishing to dispose of leaves prior to their collection date may deposit leaves at the yard waste site at 105 East Chellis St.

The yard waste site will close at 5:00 PM on Sunday, November 20, 2022.

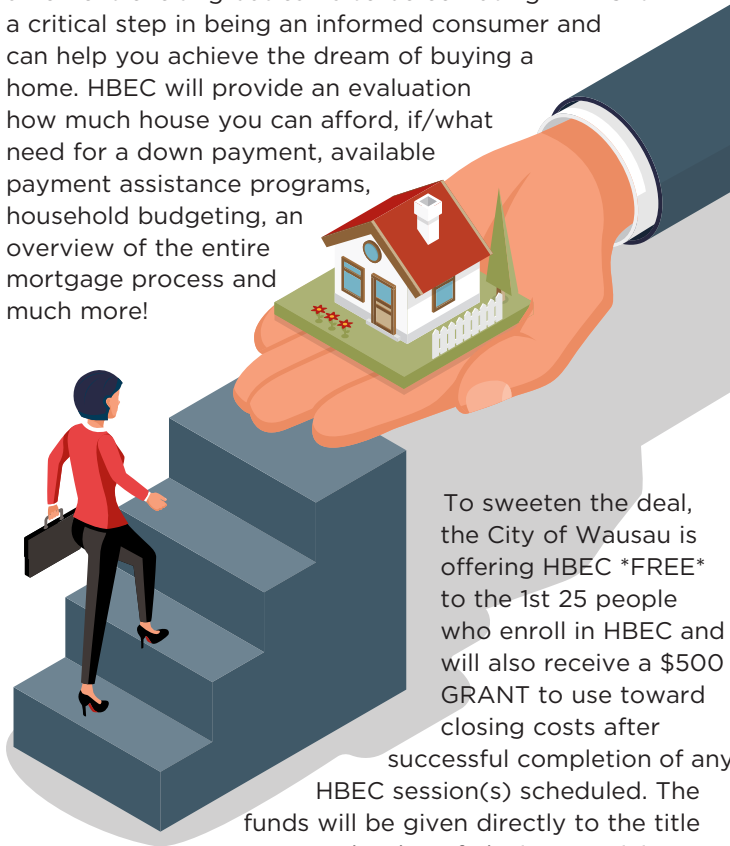
Community Development Can Help You Buy a Home!!!

Downpayment Assistance Program (DPA)

The City of Wausau offers a Downpayment Program designed to assist low-to-moderate-income households with a low interest loan to assist with the closing costs and down payment on the purchase of a single-family home in the City of Wausau. The loan limit was recently increased up to \$10,000 due to the increase in home prices and the competitive housing market. The loan has a 2% interest rate with repayment terms of 12-15 years. The BEST PART of the program is if all payments are made as agreed, the final year of payments will be forgiven! Contact Shannon at 715-261-6679 to learn more!

Pre-Purchase Homebuyer Education and/or Counseling (HBEC)

Did you know????? The City of Wausau is a HUD Certified Housing Counseling Agency and Adopter of the National Industry Standards and offers Pre-Purchase Homebuyer Education & Counseling (HBEC). Buying a home is exciting but can also be confusing. HBEC is a critical step in being an informed consumer and can help you achieve the dream of buying a home. HBEC will provide an evaluation how much house you can afford, if/what need for a down payment, available payment assistance programs, household budgeting, an overview of the entire mortgage process and much more!



To sweeten the deal, the City of Wausau is offering HBEC *FREE* to the 1st 25 people who enroll in HBEC and will also receive a \$500 GRANT to use toward closing costs after successful completion of any HBEC session(s) scheduled. The funds will be given directly to the title company on the day of closing! Participants will receive a completion certificate, which along with the \$500 Grant, will be good for one year from date of issuance. Contact Shannon at 715-261-6679 to learn more!

Group Workcamps Program

Wausau Group Workcamps: July 23-29, 2023

Do you or a neighbor need some assistance in making some repairs to your home? The City of Wausau has an opportunity get you that assistance at no cost.

In the spring of 2022, the City of Wausau unanimously approved hosting a local mission trip experience right here in the City through the collaboration with Group Mission Trips next summer, July 23-29, 2023. Every summer, Group Mission Trips hosts "Workcamp" locations across the country for youth and adults to come together in the spirit of service to do home repair work for those in need. All the activities will be hosted and headquartered at Horace Mann Middle School in Wausau.

At Group Workcamps, hundreds of teenagers from faith based youth groups across the country repair and transform homes. Home repair mission trips are large-sized gatherings with up to 400 teenage and adult chaperone participants who focus specifically on residential home repair with the aid of professional adult volunteers. Typically, they work on 50-70 homes during a one-week camp. The types of home repair projects range from painting, building decks and wheelchair ramps, and other general home repairs. Both labor and materials are free to qualifying households.

To learn how your home might be included, please complete the application found on the City website (www.wausaudevelopment.com/GroupWorkcamps.aspx) or stop by the Community Development Department at City Hall to pick one up. This applications can be returned to the below address where it will be reviewed and considered for the program. Groupworks will only be able to work on a limited number of home sites as part of the program. Preference will be given to those qualified applicants that submit their applications in a timely manner. Applications will be accepted starting August 15, 2022, with final review occurring in the spring of 2023. Your house must be in the City of Wausau to participate.

Return Completed Application to:
City of Wausau, Tammy Stratz
407 Grant Street, Wausau, WI 54403
Tammy.Stratz@ci.wausau.wi.us
715-261-6682



NOVEMBER 8

IS ELECTION DAY

WHERE DO YOU VOTE?

District	Location
1 & 2	Pilgrim Lutheran Church, 709 Weston Ave
3 & 10	Marathon Park East Gate Hall, Garfield Ave
4 & 5	Thrive Church, 400 Grand Ave
6	Sylvan Hill Park, 1329 Sylvan St
7 & 8	St. Mark's Lutheran Church, 600 Stevens Dr
9 & 11	National Guard Armory I, 833 S 17th Ave

Visit myvote.wi.gov to see which district you live in.

HOW CAN YOU VOTE ABSENTEE BY MAIL?

Absentee ballots are being mailed to voters. Eligible voters can request a ballot be mailed to them until November 3 at 5:00pm:

- Online at myvote.wi.gov
- By mail, email, or fax

Ballots need to be returned to City Hall by 8:00pm on Election Day!

WHEN IS IN PERSON ABSENTEE VOTING?

In person absentee voting allows voters to vote early at the Clerk's Office. It will be at City Hall:

- October 25 - 28: 8:00am - 4:30pm
- October 31 - November 4: 8:00am - 4:30pm
- November 5: 8:00am - 12:00pm

Visit ci.wausau.wi.us or call 715-261-6620 for more info.

REMINDERS FOR THE GENERAL ELECTION

- All poll sites are open from 7:00am - 8:00pm
- All voters will need to show a valid photo ID
- Eligible voters can register at the polls on Election Day if they have a valid proof-of-residence document

WHAT'S ON YOUR BALLOT?

- Governor/ Lieutenant Governor
- Attorney General
- Secretary of State
- State Treasurer
- U.S. Senator
- Congress District 7
- State Senate District 29
- Assembly Rep. District 85 or 86
- Marathon County Sheriff
- County Clerk of Circuit Court

See ballot candidates for each race at myvote.wi.gov.

WHAT IS A BADGER BOOK?

A Badger Book is an electronic poll book. It is used to check in voters, process Election Day registrations, and record absentee participation. They will be used at the Armory and Sylvan Hill poll sites on November 8. Learn more at the City's website.

Miscellaneous Information

Winter Preparedness

It's coming... Winter storms and extreme cold will be in the forecast

There are many steps you can take now to help protect you and your family from bitter cold temperatures, icy winds, and heavy snow.

Prepare your home and family

- Prepare for possible power outages and how to stay warm if it goes out.
- Keep fire extinguishers on hand and make sure everyone in your house knows how to use them.
- Ensure you have operational carbon monoxide detectors.
- Talk with your friends and family about their preparation.
- Don't forget your pets!
- Keep safety in mind when shoveling or snow-blowing.

Make a Plan

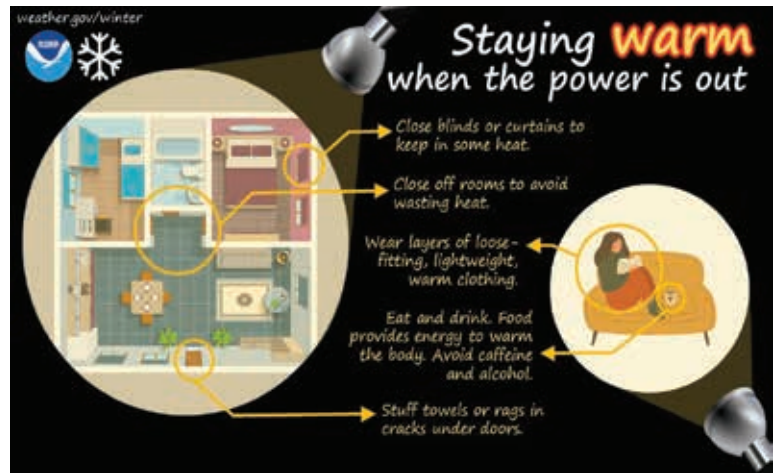
Make a Family Emergency Plan with contact information. Your family may not be together when disaster strikes, so it is important to know how you will contact one another, how you will get back together and what you will do in case of an emergency. Plan places where your family will meet, both within and outside of your immediate neighborhood.

You may also want to inquire about emergency plans at places where your family spends time: work, daycare and school. If no plans exist, consider volunteering to help create one.

Dress for the Weather

Wear several layers of loose fitting, lightweight, warm clothing rather than one layer of heavy clothing. The outer garments should be tightly woven and water repellent. If possible, consider wearing mittens instead of gloves. Wear a hat and cover your mouth with a scarf to protect your lungs.

For more information, please go: https://www.weather.gov/wrn/winter_safety



Betterbin Recycling App

Have you downloaded Wausau's recycling app?

Do you have questions about what materials should and should not go in your recycle cart? The City conducted a waste audit that showed 84% of recycle carts had unacceptable materials in them, while 65% of refuse carts had materials that should have gone in the recycle cart. The City has teamed up with the Betterbin app to make recycling correctly so much easier. Go to the App Store or Google Play and search for Betterbin to download the app. App users can scan a UPC barcode or text search for a product to learn if it's acceptable in Wausau's recycle program.

Holiday Trees Needed

The Wausau/Marathon County Park Department is looking for four (4) evergreen trees to be donated for the Holiday Season. The trees must be accessible by our trucks and be of acceptable shape, size, and form.

The trees, preferably balsam fir or spruce, will be installed at the 400 Block, City Hall, Courthouse, and the intersection of Stewart Avenue and 1st Avenue.

Anyone interested in donating a tree for these locations is encouraged to contact the Park Department at (715) 261-1550 or parkforestry@co.marathon.wi.us





Department of
Inspections, Zoning, &
Electrical Systems
FALL 2022



WINTER ROOF PREP

When getting ready for the upcoming Fall and Winter weather, below are some tips to watch for:

ICE AND WATER BARRIERS:

Make sure to check manufacturer recommendations before beginning your project:

Weather guard products should not be installed over existing weather guard products. Removal of products often requires removing the structural roof decking.



PERMITS

Permits are required not only to ensure your project meets City zoning regulations and complies with City and State codes, but also to let us assist you in achieving a project that is safe and structurally sound.

- ◆ New construction
- ◆ Additions/Remodeling
- ◆ Garages/Accessory buildings
- ◆ Roofing/Siding
- ◆ Fences
- ◆ Demolition
- ◆ Plumbing
- ◆ Electrical

PERMITS ARE REQUIRED PRIOR TO WORK BEGINNING

RECREATIONAL EQUIPMENT STORAGE

Motor homes, camping and travel trailers, boats, trailers, snowmobiles, ATV's, etc. cannot be parked or stored in any required front yard or corner side yard, except for on a designated driveway which meets the City's hard surfacing requirements. Equipment or trailers that are longer than 30' (measured from back bumper to tongue) must be parked within enclosed structures.



General Office Hours:
8am to 4:30pm

Inspector Office Hours:
8-9 am and 12:30-1:30pm

715.261.6780
inspections@ci.wausau.wi.us



EXTERIOR PROPERTY AREAS

- ◆ Shall be maintained in a clean and sanitary condition, free from any accumulation of items, garbage, debris, yard waste.
- ◆ Yard waste cannot be left piled or bagged on exterior yards or the Right-of-Way, including the alleys, boulevards, gutters and streets
- ◆ Dog/animal excreta must be picked up in a timely manner, so as to minimize health hazards.
- ◆ Furniture, not intended for outdoor use, is not allowed on yards or open porches.



LED LIGHTING PROJECT

The city electricians have begun retrofitting all city owned street lighting with LED fixtures. This upgrade was approved by city council in Spring 2022. It will be a substantial energy savings and allow extremely low maintenance costs. Completion is anticipated in early 2023.

Wausau Water Works



Schedule of Rates EFFECTIVE OCTOBER 1, 2022

WAUSAU WATER WORKS

407 Grant Street
City Hall, Wausau, WI 54403-4783
Phone: 715 261-6530 • Fax: 715 261-6533
E-mail: waterworks@ci.wausau.wi.us

Office Hours: Monday-Friday
8:00 a.m. – 4:30 p.m.

WATER RATES

EFFECTIVE JANUARY 1, 2021

Quarterly Service Charge

(based on meter size)

5/8 Inch Meter	\$24.81
3/4 Inch Meter	24.81
1 Inch Meter	40.62
1-1/4 Inch Meter	55.47
1-1/2 Inch Meter	69.72
2 Inch Meter	106.83
3 Inch Meter	174.00
4 Inch Meter	264.00
6 Inch Meter	474.00
8 Inch Meter	720.00
10 Inch Meter	1047.00
12 Inch Meter	1371.00

Plus Volume Charge:

Residential Customers - All water used -
\$2.91 per 100 cu. ft.

Non-Residential Customers -

First 6,000 cu. ft. \$2.91 per 100 cu. ft.
Next 54,000 cu. ft. used -
\$2.71 per 100 cu. ft.
Over 60,000 cu. ft. used -
\$2.25 per 100 cu. ft.

Irrigation Class -

All water used - \$4.35 per 100 cu. ft.

Bills for water and sewer service are issued quarterly and due the 20th of the month. A 1% late payment charge is added to the outstanding balance after the 20th of each month and is applicable to all customers. To avoid late payment charges, all bills must be received in the **office of the City Treasurer** by the due date printed on the front of the bill. Customers who pay at remote collection sites (grocery stores) are recommended to make payments prior to due dates to ensure timely receipt by the City Treasurer.

PUBLIC FIRE PROTECTION FEES

EFFECTIVE JANUARY 1, 2021

Quarterly Service Charge

(based on meter size)

5/8 Inch Meter	\$13.14
3/4 Inch Meter	13.14
1 Inch Meter	32.76
1-1/4 Inch Meter	48.45
1-1/2 Inch Meter	65.49
2 Inch Meter	104.79
3 Inch Meter	198.00
4 Inch Meter	327.00
6 Inch Meter	654.00
8 Inch Meter	1047.00
10 Inch Meter	1,575.00
12 Inch Meter	2,100.00

SEWER RATES

EFFECTIVE OCTOBER 1, 2022

Quarterly Service Charge

(based on water meter size)

5/8 Inch Meter	\$34.58
3/4 Inch Meter	34.58
1 Inch Meter	46.68
1-1/4 Inch Meter	65.01
1-1/2 Inch Meter	75.38
2 Inch Meter	126.21
3 Inch Meter	227.88
4 Inch Meter	372.07
6 Inch Meter	734.46
8 Inch Meter	1,155.29

Plus Volume Charge

All volume, as recorded by the water meter each quarter shall be charged at the rate of \$5.63 per 100 cubic ft.

All customers are billed for sewer based on the amount of water used each quarter. Unmetered sewer rate is \$147.08 per quarter in the City and \$155.15 per quarter outside the City.

PRIVATE FIRE PROTECTION CHARGES

EFFECTIVE JANUARY 1, 2021

This service is for unmetered connections to the main for the purpose of supplying water to private fire protection systems such as automatic sprinkler systems, standpipes, (where same are connected permanently or continuously to the mains) and private hydrants.

2 Inch or Smaller Connection	\$ 18.00
3 Inch Connection	33.00
4 Inch Connection	54.00
6 Inch Connection	105.00
8 Inch Connection	168.00
10 Inch Connection	252.00
12 Inch Connection	336.00
14 Inch Connection	420.00
16 Inch Connection	504.00

CHARGES FOR TURNING ON SERVICE

Turn on valve at curb

(includes meter installation if needed)
During Normal Business Hours. . . . \$60.00
After Hours. 100.00

LATERAL CONNECTIONS

1" Water Lateral Connection
Based on Time and Materials
1-1/2" or Larger Water Lateral
Based on Time and Materials

MISSED APPOINTMENT FEES

During Normal Business Hours. . . . \$60.00
After Hours. 100.00

MISCELLANEOUS

Payments Not Honored
by Financial Institution. \$45.00

Wausau Water Works to Issue Delinquent Notices

Notices for delinquent water and sewer bills will be issued in early October to property owners and tenants. These bills are due by November 1, 2022, to avoid an additional 10% penalty. If not paid by November 15, the total owing, including the 10% penalty, will be added to the property taxes.

These charges may also show up in the Circuit Court Access Program (CCAP) program under the tenant's name. This could have a bearing for tenants who are looking at renting other properties and have delinquent water and sewer bills as potential landlords would be able to see that information.

Should you have any questions regarding any outstanding balances, please contact Wausau Water Works at 715-261-6530.

Residential Cross Connection Survey

As part of a continued effort to provide safe water, Wausau Water Works performs a Cross Connection Survey at each residence within the city. These are completed during the same appointment as a water meter replacement. These inspections not only protect against hazardous connections to the water supply but are required by the EPA and DNR.

These residential surveys will consist of an inspection of the basement plumbing, as well as any plumbing located outside the home. Some of the things we will be looking at are the drains on water softeners, hose bibs, laundry tubs, boilers, toilets and other connection points including irrigation systems. This assures compliance with state cross connection plumbing code.

The most common residential non-complying plumbing fixtures are hose bibs not having back flow prevention. A simple installation of a hose bib vacuum breaker can often fix this issue.

Property owners will be responsible for any repairs or alterations to their plumbing that will be necessary to meet code compliance. If violations are found during the inspection repairs will need to be made within 30 days and a follow-up re-inspection scheduled with the utility.

The cross connection control program was set up to protect the public water supply system from potential backflow hazards which could allow "dirty" or unsafe water to get into the public water supply. Wausau Water Works would like to thank you for your participation in this program, helping us to provide safe water and meet federal and state requirements.

New Drinking Water Treatment Facility Starting Up

We are only weeks away from the new Drinking Water Treatment Facility being placed into operation. The construction of the new Drinking Water Treatment Facility began in 2020 and has been steadily moving forward toward completion. In September, the utility began start up and testing of the new treatment processes one by one to verify proper operation and optimize operation. Currently two of the six city wells are pumping to the new treatment facility to allow for process and treatment testing. Our next critical step in the start up process will be to run the new facility for a minimum of 7-days consecutively while meeting all state and federal minimum treatment requirements; this needs to be done without interruption. Once we have accomplished this step and the treatment facility shows it is fully operational, the WDNR will evaluate the results and provide the approval to place the facility online. Full operational testing of the facility is scheduled to begin the week of September 26. After two years of construction the new treatment facility is only weeks away from being fully operational. Not only will the new treatment facility continue the legacy of providing safe drinking water, it will significantly improve water quality and allow Wausau to adapt and meet future drinking water regulatory requirements. This is a historic and very significant milestone for Wausau as this is a state-of-the-art facility which will provide safe clean drinking water to the Wausau Community for future generations.

What is a Cross-Connection?

A cross-connection is an actual or potential connection between the safe drinking water (potable) supply and a source of contamination or pollution. State plumbing codes require approved backflow prevention methods to be installed at every point of potable water connection and use. Cross-Connections must be properly protected or eliminated.

How does contamination occur?

When you turn on your faucet, you expect the water to be as safe as when it left the treatment plant. However, certain hydraulic conditions left unprotected within your plumbing system may allow hazardous substances to contaminate your own drinking water or even the public water supply.

Water normally flows in one direction. However, under certain conditions, water can actually flow backwards; this is known as Backflow. There are two situations that can cause water to flow backward: back siphonage and backpressure.

Backsiphonage

May occur due to a loss of pressure in the municipal water system during a fire fighting emergency, a water main break or system repair. This creates a siphon in your plumbing system which can draw water out of a sink or bucket and back into your water or the public water system.

Backpressure

May be created when a source of pressure (such as a boiler) creates a pressure greater than the pressure supplied from the public water system. This may cause contaminated water to be pushed into your plumbing system through an unprotected cross-connection.

Insights to protect your drinking water

Do...

- Keep the ends of hoses clear of all possible contaminants.
- Make sure dishwashers are installed with a proper "air gap" device.
- Verify and install a simple hose bibb vacuum breaker on all threaded faucets around your home.
- Make sure water treatment devices such as water softeners have the proper "air gap", which is a minimum of one inch above any drain.

Hose bibb Vacuum Breaker



Don't...

- Submerge hoses in buckets, pools, tubs, sinks or ponds.
- Use spray attachments without a backflow prevention device.
- Connect waste pipes from water softeners or other treatment systems directly to the sewer or submerged drain pipe. Always be sure there is a one inch "air gap" separation.

Air Gap



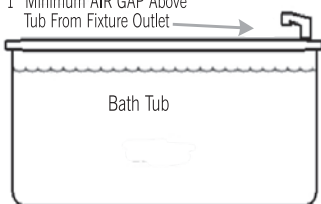
In the Bathroom - Hand Held Shower Fixture

The hand held shower fixture is compliant if:

- When shower head is hanging freely, it is at least 1" above top of the flood level rim of the receptor (tub)
- Complies with **ASSE #1014**
- Has the **ASME code 112.18.1** stamped on the handle



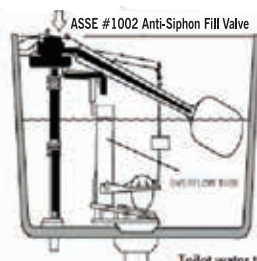
1" Minimum AIR GAP Above Tub From Fixture Outlet



In the Bathroom - Toilet Tanks

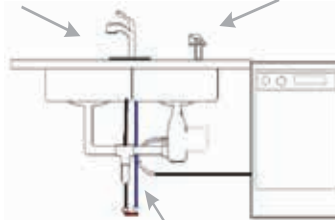
There are many unapproved toilet tank fill valve products sold at common retailers which do not meet the state plumbing code requirements for backflow prevention.

- Look for the **ASSE #1002** Standard symbol on the device and packaging.
- Replace any unapproved devices with an **ASSE #1002** approved anti-siphon fill valve device. Average cost is typically \$12 to \$22 at home improvement stores.
- Verify overflow tube is one inch below critical level (CL) marking on the device.



Toilet water tank

In the Kitchen



Hoses and water treatment devices may create a potential backflow hazard if not properly isolated with backflow prevention methods.

WI-KBRCCC-2015-03 © 2015 HydroCorp



Overnight Parking

ALL NIGHT PARKING: Parking is allowed on City streets (other than in designated areas in downtown—see below) on an alternate side basis **during the hours of 2:30 a.m. and 6:00 a.m.** It is not necessary to call the Police Department for permission. Vehicles must be parked on the even-numbered side of the street on even-numbered calendar days and on the odd side of the street on odd-numbered calendar days.

Odd/even parking is not allowed on streets where “No Parking” restrictions are in effect. However, odd/even parking is not enforced on streets with “No Parking” on one side of the street only. Therefore, residents can legally park on the side not prohibitively posted regardless of the day unless a snow emergency has been declared.

Keep in mind that the odd/even requirement pertains to the time period of 2:30 a.m. to 6:00 a.m. If you park your vehicle on the street in the evening intending that it will be parked overnight, make sure it is on the appropriate odd/even-numbered side of the street for the time period of 2:30 a.m. to 6:00 a.m.

DOWNTOWN AREA: Between the hours of 2:30 a.m. and 6:00 a.m., parking is not allowed in the area (including both sides of the streets) bounded on the north by McIndoe Street, on the west by First Street, on the south by Forest Street, and on the east by Sixth Street. Persons who live downtown (and occasional visitors) can park overnight in the parking ramp structures. However, your vehicle must be removed from the parking structure before 8:00 a.m., Monday through Friday, to avoid being ticketed.

SNOW EMERGENCY: Overnight parking will not be allowed during snow emergencies. Residents should keep in mind that even if a snow emergency has not been declared, vehicles which are parked overnight on City streets during snowfalls may hinder snow plowing operations.

The forfeiture for violating the overnight parking ordinance is \$25.00, and is \$100.00 during snow emergencies.

Halloween Safety Tips

Everyone loves a good scare on Halloween, but not when it comes to child safety. There are several easy and effective behaviors that parents can share with kids to help reduce their risk of injury. On average, children are more than twice as likely to be hit by a car and killed on Halloween than on any other day of the year.

- Cross the street at corners, using traffic signals and crosswalks.
- Look left, right and left again when crossing and keep looking as you cross.
- Put electronic devices down and keep heads up and walk, don't run, across the street.
- Teach children to make eye contact with drivers before crossing in front of them.
- Always walk on sidewalks or paths. If there are no sidewalks, walk facing traffic as far to the left as possible. Children should walk on direct routes with the fewest street crossings.
- Watch for cars that are turning or backing up. Teach children to never dart out into the street or cross between parked cars. Trick or Treat With an Adult.
- Children under the age of 12 should not be alone at night without adult supervision. If kids are mature enough to be out without supervision, remind them to stick to familiar areas that are well lit and trick-or-treat in groups. Keep Costumes Both Creative and Safe.
- Decorate costumes and bags with reflective tape or stickers and, if possible, choose light colors.
- Choose face paint and makeup whenever possible instead of masks, which can obstruct a child's vision.
- Have kids carry glow sticks or flashlights to help them see and be seen by drivers.
- When selecting a costume, make sure it is the right size to prevent trips and falls.
- Eliminate any distractions inside your car so you can concentrate on the road and your surroundings.
- Slow down and be especially alert in residential neighborhoods. Children are excited on Halloween and may move in unpredictable ways.
- Take extra time to look for kids at intersections, on medians and on curbs. Enter and exit driveways and alleys slowly and carefully.
- Drive slowly, anticipate heavy pedestrian traffic and turn your headlights on earlier in the day to spot children from greater distances.
- Wausau trick-or-treating hours are 4 p.m. to 7 p.m. so be especially alert for kids during those hours.



For more information visit safekids.org.



Thanksgiving Safety

The kitchen is the heart of the home, especially at Thanksgiving. Kids love to be involved in holiday preparations. Safety in the kitchen is important, especially on Thanksgiving Day when there is a lot of activity and people at home.

- Stay in the kitchen when you are cooking on the stovetop so you can keep an eye on the food.
- Stay in the home when cooking your turkey and check on it frequently.
- Keep children away from the stove. The stove will be hot and kids should stay 3 feet away.
- Make sure kids stay away from hot food and liquids. The steam or splash from vegetables, gravy or coffee could cause serious burns.
- Keep the floor clear so you don't trip over kids, toys, pocketbooks or bags.
- Keep knives out of the reach of children.
- Be sure electric cords from an electric knife, coffee maker, plate warmer or mixer are not dangling off the counter within easy reach of a child.
- Keep matches and utility lighters out of the reach of children — up high in a locked cabinet.
- Never leave children alone in room with a lit candle.
- Make sure your smoke alarms are working. Test them by pushing the test button.

Did you know?



Thanksgiving is the leading day of the year for home fires involving cooking equipment.

Have activities that keep **kids out of the kitchen** during this busy time. Games, puzzles or books can keep them busy. Kids can get involved in Thanksgiving preparations with recipes that can be done **outside** the kitchen.



Winter Holiday Safety

Winter holidays are a time for families and friends to get together. But that also means a greater risk for fire. Following a few simple tips will ensure a happy and fire-safe holiday season.

HOLIDAY DECORATING

- Be careful with holiday decorations. Choose decorations that are flame resistant or flame retardant.
- Keep lit candles away from decorations and other things that can burn.
- Some lights are only for indoor or outdoor use, but not both.
- Replace any string of lights with worn or broken cords or loose bulb connections. Read manufacturer's instructions for number of light strands to connect.
- Use clips, not nails, to hang lights so the cords do not get damaged.
- Keep decorations away from windows and doors.

HOLIDAY ENTERTAINING

- Test your smoke alarms and tell guests about your home fire escape plan.
- Keep children and pets away from lit candles.
- Keep matches and lighters up high in a locked cabinet.
- Stay in the kitchen when cooking on the stovetop.
- Ask smokers to smoke outside. Remind smokers to keep their smoking materials with them so young children do not touch them.
- Provide large, deep ashtrays for smokers. Wet cigarette butts with water before discarding.

FACTS

- ! More than **one-third** of home decoration fires are started by candles.
- ! More than **two of every five** decoration fires happen because decorations are placed too close to a heat source.



Before Heading Out or to Bed

Blow out lit candles when you leave the room or go to bed. **Turn off** all light strings and decorations before leaving home or going to bed.



CITY OF WAUSAU

407 Grant Street
Wausau, WI 54403

PRSRT STD
U.S. POSTAGE
PAID
Permit No. 600
Wausau, WI

Mayor

Katie Rosenberg
407 Grant St
715-261-6800
katie.rosenberg@ci.wausau.wi.us



City Council Representatives

All mail for Alderpersons
can be sent to:
City Hall
407 Grant Street
Wausau, WI 54403

District 1

Carol Lukens
715-261-6831
carol.lukens@ci.wausau.wi.us



District 2

Michael Martens
michael.martens@ci.wausau.wi.us



District 3

Tom Kilian
715-571-8108
tom.kilian@ci.wausau.wi.us



District 4

Doug Diny
715-803-5040
doug.diny@ci.wausau.wi.us



District 5

Gary Gisselman
715-848-5160
gary.gisselman3@ci.wausau.wi.us



District 6

Rebecca McElhaney
715-261-6830
becky.mcelhaney@ci.wausau.wi.us



District 7

Lisa Rasmussen
715-261-6832
lisa.rasmussen2@ci.wausau.wi.us



District 8

Sarah Watson
715-261-6833
sarah.watson@ci.wausau.wi.us



District 9

Dawn Herbst
715-261-6834
dawn.herbst@ci.wausau.wi.us



District 10

Louis Larson
715-261-6840
lou.larson@ci.wausau.wi.us



District 11

Chad Henke
715-261-6841
chad.henke@ci.wausau.wi.us



*****ECRWSS****

Local
Postal Customer

Wausau Area Events



FALL EVENT SCHEDULE:

HARVEST FEST
OCTOBER 8 - 400 BLOCK

HOLIDAY PARADE
DECEMBER 2 - WAUSAU



FOR MORE INFORMATION ON THESE EVENTS, PLEASE VISIT:

WWW.WAUSAUEVENTS.ORG