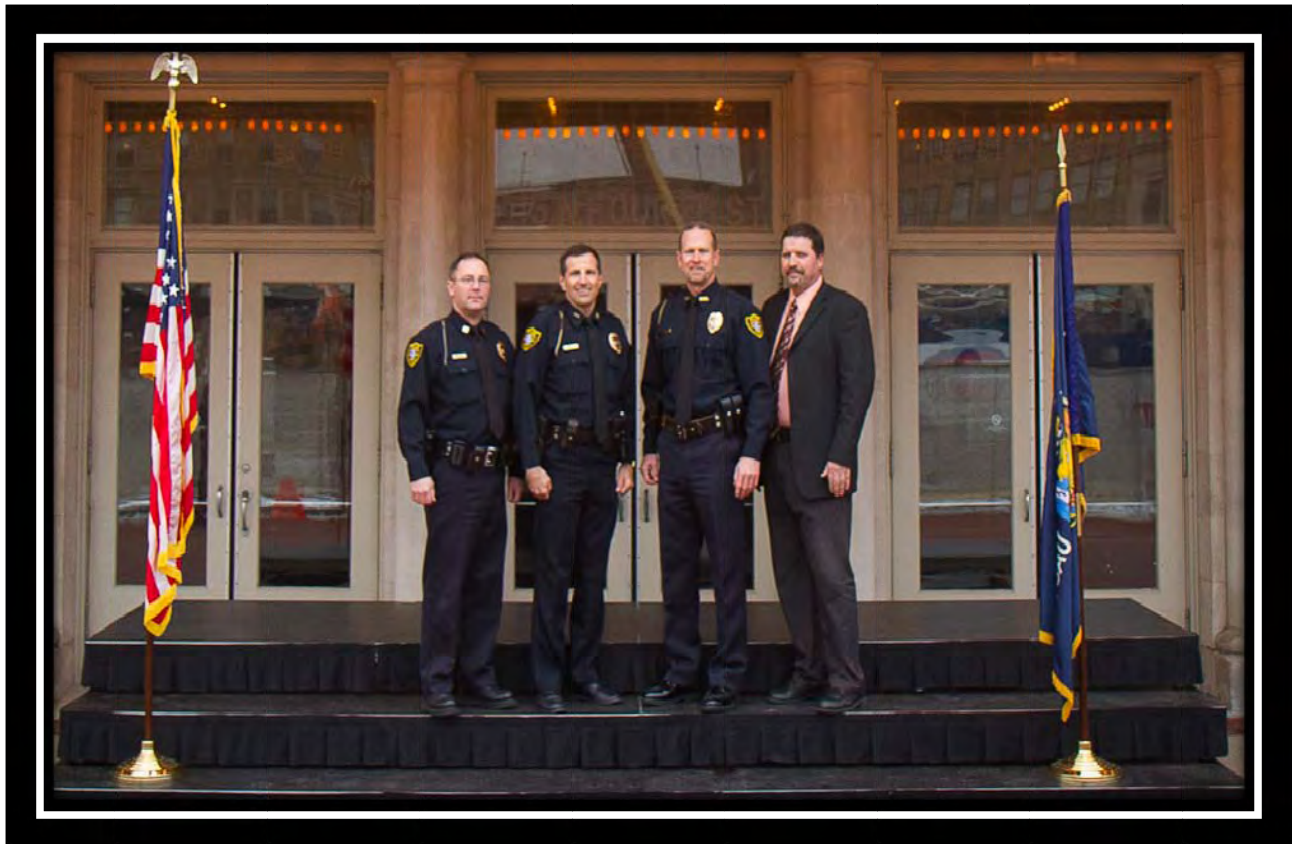




2010
Wausau Police Department
Annual Report

Annual Report Index

<u>Item</u>	<u>Page</u>
Command Staff	2
Organizational Chart	3
Wausau City Government	4
Service to Our Citizens	5
Mission Statement	6
Core Values	7
Chief of Police Letter	8
Detective Captain Letter	9-10
Patrol Captain Letter	11
Chaplain Letter	12
2010 Department Retirements	13
Officer Recognitions for 2010	14-17
2010 Police Department in Review	18-24
2010 Wisconsin Police Chief Conference	25-26
Wausau Police Department Honor Guard	27
Community Services and Programs	28-33
2010 Crime & Traffic Statistics	34-41
Budget Information	42-43



Command Staff:

Left to Right

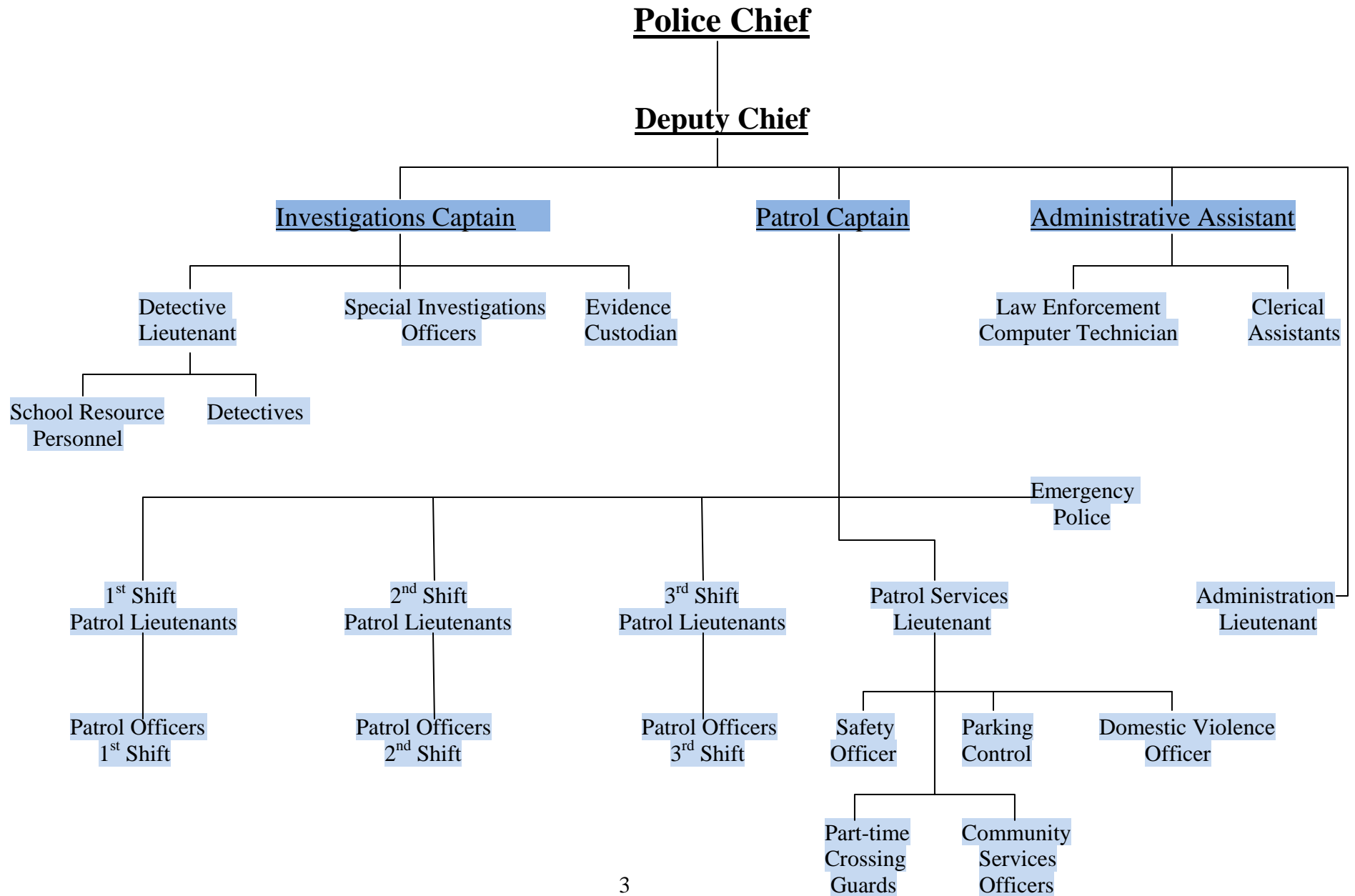
Patrol Captain – Dwayne Dachel

Deputy Chief of Police – Bryan Hilts

Chief of Police – Jeffrey Hardel

Investigations Captain – Greg Hagenbucher

Wausau Police Department Organizational Chart





Wausau City Government



Mayor James Tipple

Council President

Ed Gale D12

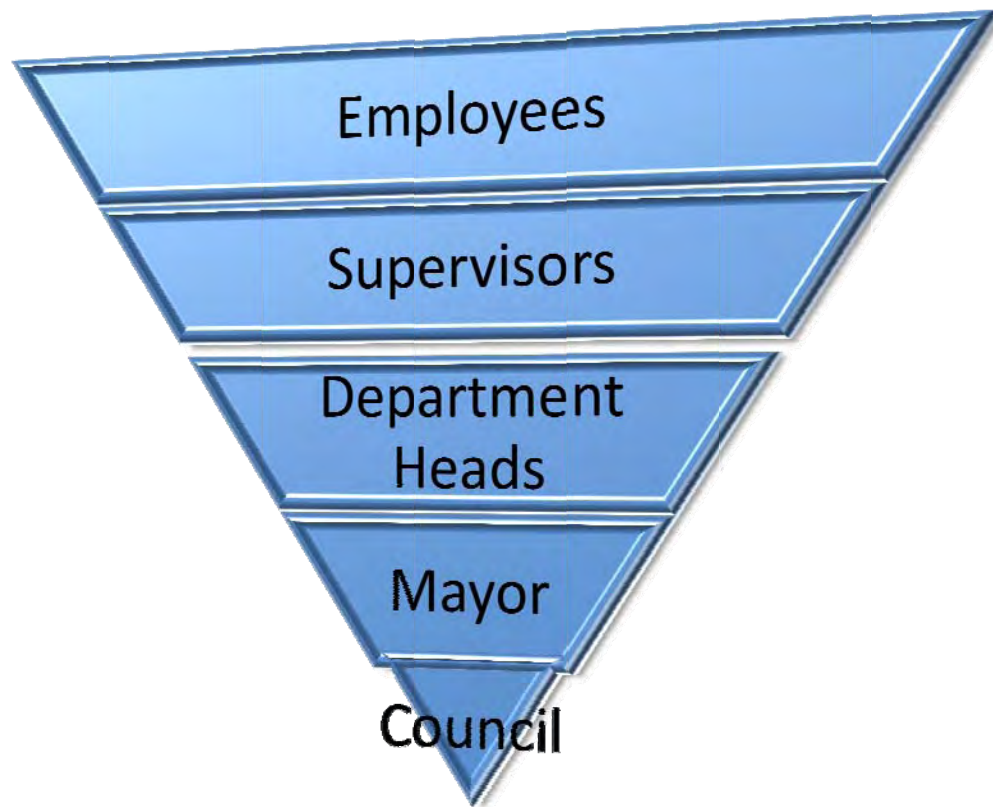
City Council Members

William P. Nagle D1
Romey Wagner D2
Jonathan Havel D3
Jim Brezinski D4
Gary Gisselman D5
Gary Klingbeil D6
Lisa Rasmussen D7
Karen Kellbach D8
David Oberbeck D9
David E Nutting D10
Sherry Abitz D11

Police & Fire Commission Members


Tony Patterson (Chair)
William Graef
Laurin Jorstad
Dennis Huntimer
Cheryl Bahr

Service to Our Citizens



The graph above shows how the City is organized to carry out the Mission Statement and provide Service to Our Citizens. The Council is the foundation of City Government and is responsible for setting policy and creating a positive atmosphere, enabling the City to move forward. The Council works with and supports the Mayor and the Department Heads in combined efforts to provide the Supervisors and Employees what is needed to ultimately serve our citizens. Key to this is living by the Core Values. The City's Core Values guide daily operations and employee decisions.

Mission Statement



The Wausau Police Department, in response to our citizens, will provide services in the most effective and efficient manner in order to promote and enhance our living environment within the city and to the citizens of the community. The Wausau Police Department plans and encourages positive growth. We promote a positive community image by encouraging citizen involvement and civic pride.



The Wausau Police Department is committed to enhancing the quality of life, fostering peace, and identifying and resolving neighborhood problems within the City of Wausau by dedication to a continuing partnership with the community; to be accomplished through the empowerment of both police officers and citizens. The Wausau Police Department strives to deliver the police services the citizens want, rather than what we think they need.



The mission represents the department's commitment to the concepts of quality performance. All members are expected to work consistently in a quality manner in the daily performance of those duties, responsibilities, and work tasks associated with the department's mission. A quality manner signals that performance outcomes comply with the performance standards established for our agency and for each member. Each member of the department is required to accept the responsibility for the achievement of this mission and the concepts of quality service.

Core Values

Values embody our philosophy of policing and set forth our hopes for the future of our community, our profession, our department, and ourselves. We recognize that the following values, this philosophy of policing, will always be a yardstick against which we must measure ourselves, our efforts, our programs, our regulations, and our priorities. Whether appointed or civilian, full-time or part-time, paid or volunteer, we are proud to belong to this department and to adopt the following values:



Human Life - Above all else, the Wausau Police Department cherishes human life and dignity.

Excellence - The Wausau Police Department strives for personal and professional excellence, dedication to duty, and services to the public.

Responsiveness - The Wausau Police Department will be responsive to the needs of the community, working together to solve problems of mutual concern. We will be fair and decent, reflecting our professional ethics and values.

Compassion - The Wausau Police Department will show empathy and caring for victims, people who seek our help, and all people with whom we come in contact.

Law & Constitution - The Wausau Police Department believes in the principles embodied in the Constitution of the United States, and the constitution of the State of Wisconsin. We recognize the authority of the federal, state, and local laws.

Pride - The Wausau Police Department takes pride in our department and in our profession. We are proud of who we are and what we do. We are proud of the trust which the public places in us individually, as an agency, and in our profession.

Integrity - The Wausau Police Department believes that integrity is the basis for personal and public trust.

Cooperation - The Wausau Police Department believes that cooperation and respect among ourselves, members of the community, governmental entities, and other law enforcement agencies will enable us to combine our diverse backgrounds, skills, and styles to achieve common goals.

Enterprising - The Wausau Police Department will be diligent in keeping up with changing times, both in technological and human resource areas. We encourage officer creativity, while still maintaining fiscal responsibility to the community.



Chief of Police

Dear Citizens of Wausau, Mayor Tipple, Common Council of the City of Wausau, and the Wausau Police & Fire Commission:

It is with pleasure that we present you with the Wausau Police Department Annual Report for 2010. This document serves as a window to our department. We invite you to learn more about our department and our profession. Learn more about our purpose, philosophy, and operations. Should you have questions, please do not hesitate to contact one of the command officers for assistance.

The City of Wausau saw a decrease in the violent crime index of 20%. The most significant change was a 30% decrease in aggravated assaults. However, we also saw a 25% increase in the total number of drug related arrests. Drug use, drug sales and overall drug abuse continue to drive criminal activity. Drugs play a significant role in many crimes as addicts attempt to sustain their habit. This is even visible in the area of simple thefts, which saw an increase of 27% with a total number of nearly 900 thefts reported.

The Wausau Police Department continues to respond to the community concerns in regards to traffic enforcement. Neighborhood or sector meetings are held each year which allow citizens the opportunity to share their neighborhood concerns or request special or specific enforcement efforts. Most concerns are related to traffic enforcement. Officers responded to these concerns by increasing traffic enforcement by 8%, issuing a total of 8,777 citations.

With over 32,000 calls for service generating over 50,000 officer responses in our community, the demands and expectations placed on our officers is very high. But that is what makes our profession special, unique, and rewarding. This job requires great character and strong ethical make up. It takes a special person to commit themselves to the highest professional standards that we adhere to. Wausau is very fortunate to have outstanding men and women who comprise the Wausau Police Department. On a daily basis, the command staff witnesses the dedication and professionalism that our officers exhibit. This reinforces the significance of hiring the best candidates who will carry out our mission and support our philosophy. Officers are committed to providing quality service and making a difference in our community.

I encourage all citizens to increase their level of involvement with us, to be our partners in policing. Whether that involvement means reporting crime, having keen eyes and ears as a good witness, being part of a neighborhood partnership or neighborhood watch group, joining our Emergency Police volunteer services, attending neighborhood meetings, or being supportive in other areas that help your sector officers do the best job they can.

Other services that we provide that might be of interest to you are: Security Surveys, Citizen's Police Academy, Explorer Post, and car seat inspections. Find out more about these programs as you browse the Annual Report.

I am very honored to be the Chief of Police in this great community. We will continue to strive to provide the best service we can and improve the quality of life for all residents of the City of Wausau.

Sincerely,

Jeff Hardel
Chief of Police
Wausau Police Department



Detective Captain

The Wausau Police Department Investigative Bureau is dedicated to providing the highest quality of investigative, scientific, and information services for the purpose of maintaining law and order and protecting life and property. Members of the investigative services bureau respond directly to crime scenes, and do their best to combat and reduce crime by conducting prompt, diligent, and professional investigations. Detectives maximize the use of all technological resources to solve crimes, track down and apprehend suspects, as well as to locate missing persons and recover and return stolen property to the rightful owner.

The investigative services bureau consists of five general detectives, three school resource officers (one detectives and two patrol officers), two drug investigators who work with the Marathon County Special Investigative Unit, one lieutenant, and one captain. A detective and a detective supervisor are on-call 24/7.

In 2010, the Investigative Services Bureau conducted a number of major investigations. Some of these cases included:

In 2010, a twenty-two year old female was reported missing from her Westside Wausau apartment. Evidence found in her apartment lead officers to believe she had disappeared under suspicious circumstances. Detectives processed a number of pieces of evidence from her apartment, conducted near one hundred interviews, and followed up on over two hundred leads to date. The female has not been heard from or located. This case will remain open, and detectives will continue to complete any leads that come to our attention, until she is located.

In 2010, information was received that a registered sex offender was having sexual contact with a nine year old girl, and bragging about dating her and his plans to have a child with this victim. The follow-up investigation, in conjunction with social services resulted in the arrest of two adult males for 1st degree sexual assault, and the victim's mother arrested for failing to protect the child. After a few weeks of investigation, this case was turned over to the Department of Criminal Investigations (DCI) in an effort to pursue charges of manufacturing pornography by the two adult male suspects.

In 2010, information was received that a male was seriously stabbed in the 700 blk of Washington Street. The suspect fled the state. Detectives and patrol officers worked with outside agencies until a few weeks later the suspect was located in Aruora CO. The suspect was returned to the Marathon County jail and is facing charges of 1st degree reckless endangering safety.

In 2010, a female reported she was abducted from the streets of Milwaukee and forced to work as a prostitute in an area hotel. An adult male from Milwaukee was arrested for kidnapping, and soliciting a prostitute. The female provided information to Wausau detectives and the Milwaukee Police Department Vice Squad reference prostitutes advertising on an Internet site called "Backpage.com." This investigation is continuing.

In 2010, detectives and supervisors in the detective bureau were assigned to assist the Marathon County District Attorney with court room testimony, and evidence preparation for the jury trial of Raul Ponce-Rocha. Raul Ponce-Rocha is currently awaiting a jury trial for the 1st degree intentional homicide of Breanna Schneller on May 2, 2009. The trial is scheduled to begin in January of 2011.

Identity theft, Internet crimes, and computer fraud are still on the rise. Just several years ago the department had to rely on the Wisconsin State Crime Lab to process all evidence related to computers. In some cases, this process would take up to a year to analyze the evidence. Today, because of the highly specialized training and equipment Wausau Police Detectives have received, the department can process almost any type of computer or cell phone related crimes in a matter of days. In 2010, victims report nearly one hundred identity theft, and Internet crimes. Some include:

- Identity theft*
- Counterfeit checks*
- Fraudulent checks*
- Bank/loan fraud*
- ATM card use in other states and foreign countries*
- Lottery scams*
- Re-mailing scams*
- Internet fraud and theft*
- Social security fraud*

In addition, the investigative services bureau has investigated numerous robberies, both armed and unarmed, several aggravated assaults, many arsons, over one hundred sexual assaults (juvenile & adult), a few embezzlement cases, and numerous burglaries and property crimes.

Investigators continue to attend specialized training in the areas of arson, homicide, sexual assault, financial crimes, computer crimes, and Internet fraud. The Investigative Services Bureau is committed to providing the best quality service to the public in an effort to solve crimes that need specialized follow-up.

In 2010, the investigative services bureau began using a new crime scene response vehicle. The vehicle was an ambulance that was acquired from the Wausau Fire Department, and outfitted to meet the needs of the police department. The vehicle will expedite crime scene investigations by providing investigators with greater storage capacity and state-of-the-art tools to capture and collect all possible evidence at a crime scene.

Sincerely,

Gregory Hagenbucher
Detective Captain
Wausau Police Department



Patrol Captain

The Patrol Bureau is the uniformed division of the department consisting of three community service officers, one parking enforcement specialist, forty-seven patrol officers, seven lieutenants and one captain. The officers in the patrol bureau respond to all calls for service made to the Wausau Police Department, which include traffic, criminal investigations, civil complaints and service calls. The patrol officers handle the majority of the calls for service completely, with only major criminal cases that need special investigation, being transferred to the detective bureau.

The Patrol Bureau is staffed around the clock, all year long. As a testament to the officer's dedication to the city and the citizens of Wausau, they miss important family functions; work on holidays and weekends in all weather and in all situations. They have to deal with situations that try their patience while maintaining composure, having compassion and paying attention to detail.

The patrol bureau is the core of the police department and is at the heart of Community Oriented Policing for the department. Officers interact with the citizens on a day to day basis and also hold many positions on community boards and citizen groups to help cement our bond with the community. Through these partnerships, the patrol bureau and the department assist the community in becoming a better place to live.

Many patrol officers have additional duty assignments that augment their patrol activities including Field Training Officer (training the new officers to become Wausau's Finest), bike patrol, Special Weapons and Tactics (SWAT), Dive team, advisor to the Explorer Post, coordinating Citizen's Academy, Drug Recognition Experts, canine officers, D.A.R.E instructor and more. The officers enhance the department's mission by eagerly taking on additional special assignments. Without officers voluntarily taking on these extra duties, the Wausau Police Department would not be able to provide the high level of service that the community deserves.

The Patrol Bureau is augmented by The Wausau Emergency Police Unit. The Emergency Police are a group of volunteers that assist us, sometimes at a moment's notice, to provide security, traffic control during parades and other special events. During 2010, they volunteered in excess of one thousand seven hundred hours for the community.

The dedication shown by each of these individuals makes me proud to serve with them.

Sincerely,
Dwayne J. Dachel
Patrol Captain



Annual Chaplain Report 2010

As a young boy growing up in Illinois, I remember being an active member of the local Boy Scout troop. Many lessons were learned in those years as a scout which I continue to draw upon today. One of those lessons all scouts remember is the scout's motto to always "Be Prepared." The truth of that motto has been helpful on many occasions in my life and ministry as well as a volunteer chaplain.

It was on a late night a little over a year ago, February, 2010, that I received a call from one of our officers to meet with a lady at Aspirus Hospital whose husband had just been killed in an industrial accident. While this accident was terrible in itself, two other factors made it even more tragic. (1.) She felt she was responsible for his accidental death and (2.) she was over 1,000 miles from home and family. Because of the unusual nature of this accident, it would consume much of my time and attention over the next few days. I would spend the next several hours with her in the hospital, helping her deal with feelings of guilt and remorse and communicating with her family members back home. I made arrangements for her to stay in a local hotel after her release from the hospital. She asked that I also help her take care of details here, including picking up a family member at the airport who had flown in to be with her, and to be with her as she made arrangements at a local funeral home to have her husband's body cared for. During the next several days while she found it necessary to remain in Wausau, I spent time with her in prayer. Since her time in Wausau involved a weekend, my wife and I invited her to attend church services with us and also spend time in our home. My wife still carries on a Facebook communication with her and reassuring her of our prayers.

Police officers, firefighters, and other emergency responders know that calls are never "routine." Such is also the case with the emergency services chaplain. One never knows what awaits you until you respond. We all must be prepared to deal with the unexpected. Because we must always anticipate the unexpected, stress becomes a regular part of our life. Studies have proven that at the moment the call comes, the heart rate and blood pressure dramatically increases.

We are living in a troubled world today where we deal with many things which we never thought we would have to deal with. The words of Thomas Paine often come to mind – "These are the times that try men's souls..." While I realize the particular events of those days are far different from ours today, I also recognize there are many issues that create tensions in our life.

It has been a privilege for me to have the opportunity to serve as a volunteer Chaplain with this department for the past several years. The professional relationship as well as the camaraderie I have shared with each person within the department has been one which I will continue to treasure. It is my desire to make myself available that officers may feel they can call on me to assist them in any situation.

Duane Hamilton, Chaplain

2010 Wausau Police Department Retirements



Detective Charlie Knapp

Charlie had a long and distinguished career at the Wausau Police Department. Charlie started with the Wausau Police Department in 1980, and was promoted to Detective in 1996, where he spent the remainder of his career.



Officer Mark Timken

Mark started with the Wausau Police Department in 1987, and was assigned to the day shift when he retired. Mark is well known for his passion for fitness. Mark has completed marathons, triathlons, and is an excellent swimmer. In fact, mark was instrumental in helping rescue various individuals that ended up in the Wisconsin River and couldn't make it to shore.

Officer Recognition 2010



CVMIC Award “Making Safe Traffic Stops” Video Creation

Patrol Officer Mark Klein



2010 Narcotics K9 Challenge Champion and Handler

K9 Handler D. Landretti and Foster



2010 Wausau Noon Optimists Outstanding Service Award

Detective Lt. Craig Dunbar with recipient Detective Terry Morris



May 2010 Officer S. Pierschalla receives Life Saving Award

Back Row: Captain Dachel, M. Laport, A. Hartwig, M. Krembs, Front Row: Chief Hardel, Lt. Wadinski, S. Pierschalla, Lt. Kolb, J. Kurtzhals, H. Lee



The VFW Americanism Award (Going Above and Beyond)

Patrol Officer Thomas Peterson



“Drug Unit of the Year” presented to Marathon County’s Special Investigation Unit (SIU)

Back row: M. Laport, M. VanLieshout, M. Krembs, K. Buchkoski, J. Kurtzhals, Lt. W. Kolb, B. Graham

Front Row: D. Landretti, G. Schneck, Chief Jeffrey Hardel



2010 Outstanding Service to Victims of Domestic Violence Award

Officer N. Pekarske of the Domestic Abuse Response Team



Life Saving Award – Officer Thomas Peterson

Left to Right: Lt. J. Wadinski, N. Pekarske, T. Peterson, J. Schremp, N. Cihlar

2010 Police Department In Review



Motorcycle Patrol and Honor Guard participating in Labor Day Parade 2010



2010 SWAT and SIU teams after searching for drug grows' in woods in Langlade County.



Police Lodge members deliver turkeys to the Neighbor's Place for Thanksgiving in 2010

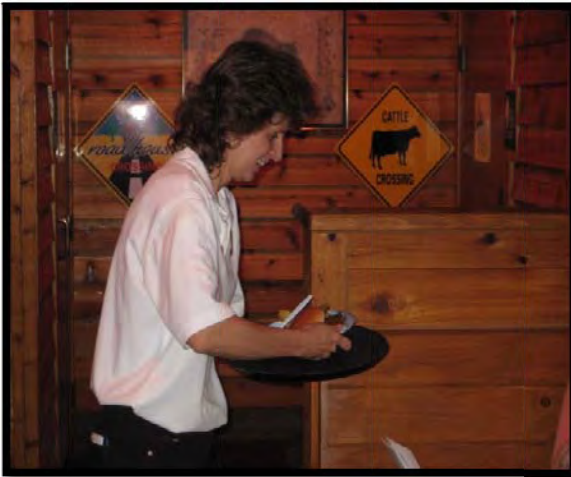


DART team members grilling at the Annual Block Party for the Women's Community



Officer Pekarske receiving Award

Police Department employees serving meals at Texas Roadhouse to raise money for the Salvation Army.



Lt. Bliven with Parking Control Specialist Kolasinski

Range Practice



SPEAR Training





Having fun at a department cookout



Department members run in the Women's Community 5k/10K race



Bike Patrol Officers and Community Service Officers at the Wisconsin Valley Fair

Wausau Police Department Hosts the 2010 Wisconsin Police Chiefs Conference





Wausau Police Department Honor Guard

Investigator N. Pauls
Patrol Officer M. Pauls
Lieutenant B. Bliven
Detective M. Barnes



The Wausau Police Department Honor Guard was formed in 2007. Current team members include Lieutenants Ben Bliven and James Wadinski, Detective Matt Barnes and Officers Pao Yang, Joe St. Amand, Nathan Pauls, Melinda Pauls, and Brent Olson. Since the team was formed, members have received training in honor guard responsibilities including flag raising, parade formation, casket guard, and more.

The honor guard attends law enforcement funerals around the state to pay respects to fallen officers and represent the Wausau Police Department. The honor guard team has marched in several parades carrying the American flag and State of Wisconsin flag. These parades include the Memorial Day parade, Labor Day parade, and Holiday parade. The honor guard has also attended several law enforcement memorial events.



Patrol Officer B. Olson
Patrol Officer P. Yang
Patrol Officer M. Pauls
Lieutenant J. Wadinski

Community Services And Programs



Special Olympics Torch Run 2010



Wausau Emergency Police Volunteers



Explorer Post

The Wausau Police Department Explorer Post is a joint effort with the Village of Kronenwetter Police Department and is designed for youth between the ages of 15-21 who are interested in learning about law enforcement. The end of 2010 marked the sixth year the Wausau Police Department Explorer Post has been active in its current form and had approximately 20 area youth participants. The Explorer Post is a self funded program where the members conduct fundraisers throughout the year in order to participate in competitions and trips.

During 2010 there was no shortage of training topics for the Explorers, as we prepared to take five explorers to the National Law Enforcement Explorer Conference in Atlanta, Georgia. At the weeklong National Conference, the five explorers represented the Wausau Police Department by participating in competitions, attending conferences, and attending demonstrations put on by different law enforcement agencies, the FBI, ATF, U.S. Border Patrol, and U.S. Secret Service. The National Competition was a once in a life time experience for the Explorers who attended and wouldn't have been possible without the support of the community and several law enforcement agencies in Marathon County.

The Wausau Police Department Explorers also volunteered their time at the Jaycee's Fourth of July Festival, the Balloon Rally, and other events within Wausau. During most events they worked with the Wausau Police Department Emergency Police to help provide traffic control at the events.



D.A.R.E.

D.A.R.E has been the most popular substance abuse education and prevention program for our school kids over the last 20+ years.

D.A.R.E. traditionally targets fifth graders and has been shown to be a positive connection between students and law enforcement. D.A.R.E. is taught by a law enforcement officer who visits classrooms for about one hour each week for 12 weeks. The main focus is on good decision making, drugs, peer pressure, positive alternatives, safety and bullying. Officers also visit lower grades (kindergarten through fourth grade). It is a great way for the children to understand the job of law enforcement officers and how important it is to follow rules and laws for their safety.



Safety City

The Safety City program is targeted for children who are 5 years old and are beginning kindergarten. It is operated jointly by the Wausau School District and the Wausau Police Department. This program trains youngsters in areas of bicycle safety; pedestrian safety; safety around strangers; safety from poisons; and bus safety. Safety City is a one week program that is offered every summer for three weeks. There is a minimal fee for enrollment in the program for any child that resides within the Wausau School District.



2010 Citizen Academy



The Wausau Police Department embraces a style of policing that involves a close working relationship with our community. In an effort to strengthen and enhance this relationship, our agency embarked on a creative venture to develop an increased partnership with our citizens.

Our department designed an eight week police course for citizens of Wausau, called “Citizen’s Police Academy”. Our Citizen’s Police Academy has three goals: 1st to provide citizens with a better understanding and knowledge of the Wausau Police Department’s operations, practices and functions; 2nd to strengthen the community’s support and involvement; 3rd to create better communication and working relationships between the citizens of Wausau and the Wausau Police Department.

Citizens learn about drug identification, OWI investigations along with the interview and statement analysis. Citizens also have an opportunity to participate in simulated firearms training and a demonstration of the Taser X26. Citizens also tour the Wausau Police Department, Marathon County Jail and Marathon County Dispatch Center.

2010 Crime & Traffic Statistics

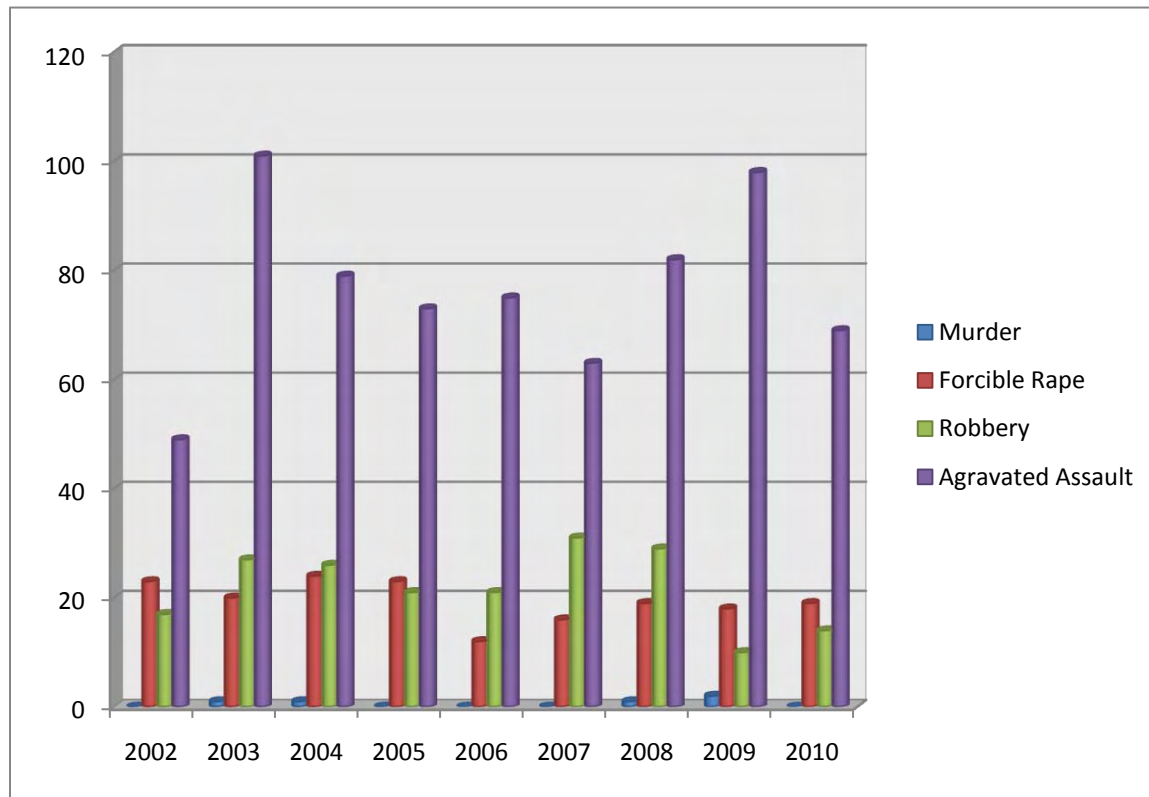


Calls for Service

In 2010, there were a total of 32,182 calls for service, numerous calls required more than one officer to respond. In 2009 there were a 31,120 officer responses including multiple officer response calls.

2009	Type of Call for Service	2010
3412	Criminal Misc	2841
7079	Traffic Stops	8036
2434	Service Misc	2020
1801	Follow Up Investigation Stops	1834
971	Traffic Misc	1072
1188	Traffic Accidents	1137
1062	Suspicious Activity	1043
596	Emotionally Disturbed Person	584
590	Hang Up Calls	544
462	Alarms	498
422	Warrant Service	502
619	Noise Complaints	636
519	Medical Emergencies	486
779	Extra Patrol	901
42	Investigative Stops	46
254	Fights	308
586	Disabled Vehicles	549
616	Dog Complaints	929
349	Attempt to Locate Juvenile	252
792	Probation/Parole Checks	933
104	Telephone Messages	121
432	Civil Complaints	636
472	Lost & Found	346
230	Hit & Run Accidents	258
254	Traffic Hazards	352
137	Traffic Accidents with Injuries	119
89	Attempt to Locate Vehicle	49
159	Vehicle Lock Outs	203
57	Attempt to Locate	49
154	Bar Checks	207
50	Threats with Weapons	33
18	Information	21
112	Juvenile Disturbances	140
115	Prisoner Transports	117
206	Process Service	213
38	Structure Fires	55
71	Funeral Escorts	117
6	Overnight Parking Complaints	6
116	Gas Skips	110
	Battery	81
	Burglary	266
	Robbery	12
	Sexual Assault	76
	Stolen Vehicle	25
	Theft from Building	352

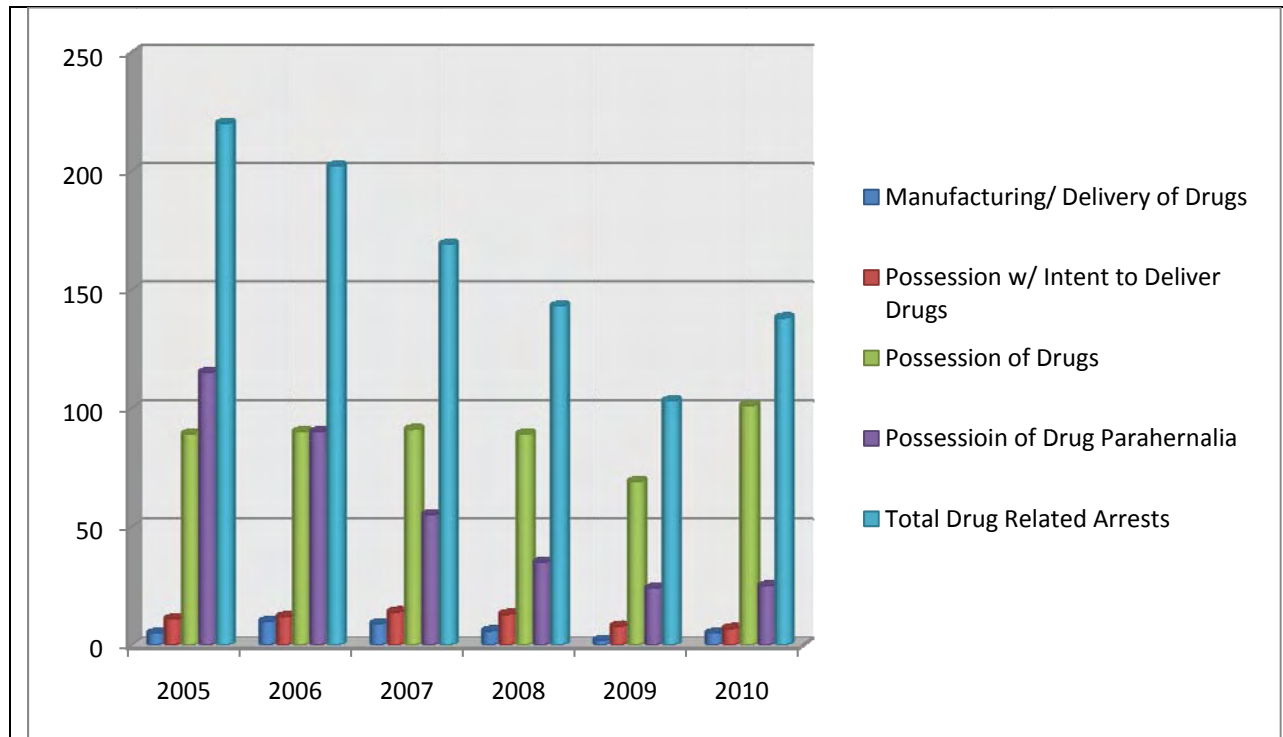
Violent Crime Index — Offenses involving face-to-face confrontation between victim and perpetrator, and are referred to as violent offenses. These are murder and non-negligent manslaughter, forcible rape, robbery, and aggravated assault.



	2002	2003	2004	2005	2006	2007	2008	2009	2010
Murder	0	1	1	0	0	0	1	2	0
Forcible Rape	23	20	24	23	12	16	19	18	19
Robbery	17	27	26	21	21	31	29	10	14
Aggravated Assault	49	101	79	73	75	63	82	98	69

In 2010, the Wausau Police Department investigated a total of 102 reported violent crimes. The overall percentage of change from 2009 was a 20 percent decline in reported violent crimes within the City of Wausau.

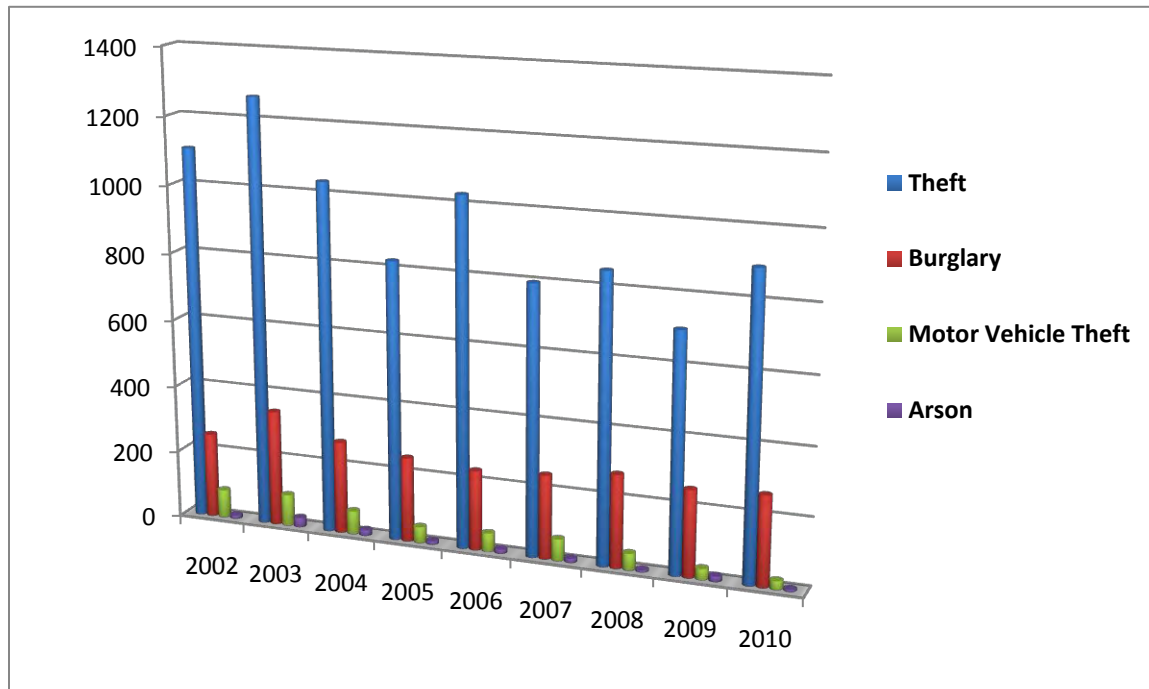
Drug Enforcement



	2005	2006	2007	2008	2009	2010
Manufacturing/Delivery of Drugs	5	10	9	6	2	5
Possession w/Intent to Deliver Drugs	11	12	14	13	8	7
Possession of Drugs	89	90	91	89	69	101
Possession of Drug Paraphernalia	115	90	55	35	24	25
Total Drug Related Arrests	220	202	169	143	103	138

In 2010, drug use continued to be a problem in the City of Wausau. While the number of drug arrests increased overall, our department continues to dedicate itself to fighting drugs and drug related crimes.

Property Crime Index

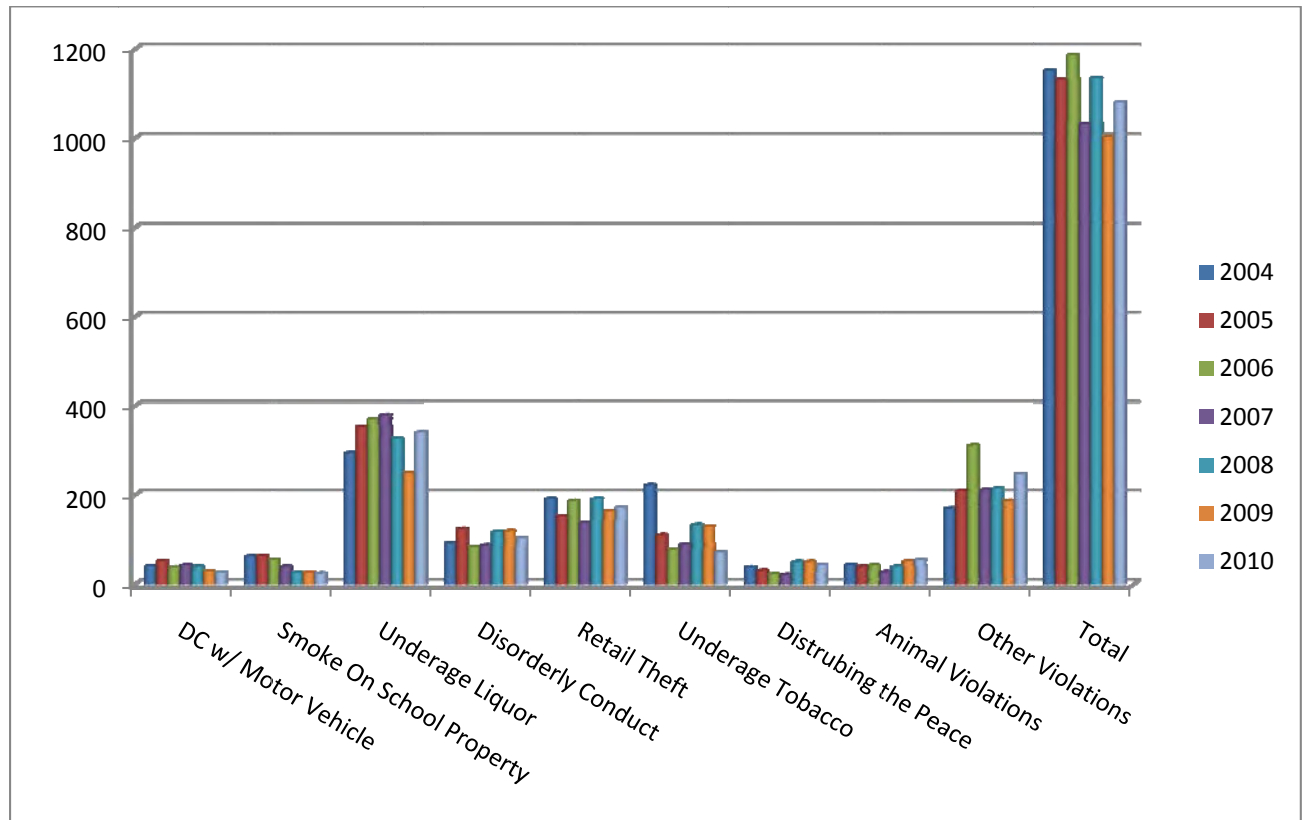


	2002	2003	2004	2005	2006	2007	2008	2009	2010
Theft	1106	1265	1037	826	1030	799	851	705	894
Burglary	253	344	275	251	237	249	276	257	267
Motor Vehicle Theft	84	94	70	48	56	65	50	33	26
Arson	10	28	17	10	12	12	6	16	6

Property Offense Definition – Offenses do not involve face-to-face confrontation between victim and perpetrator and are referred to as property offenses. These are burglary, theft, motor vehicle theft, and arson.

Municipal Citations

	2004	2005	2006	2007	2008	2009	2010
DC w/ Motor Vehicle	40	52	38	42	39	28	26
Smoke On School Property	62	63	55	39	25	26	24
Underage Liquor	294	353	370	379	327	249	340
Disorderly Conduct	92	124	83	87	117	119	103
Retail Theft	191	152	187	137	191	164	172
Underage Tobacco	222	110	78	89	133	129	71
Disturbing the Peace	38	30	22	21	50	50	43
Animal Violations	43	39	42	27	39	51	54
Other Violations	170	209	311	211	214	187	247
Total	1152	1132	1186	1032	1135	1003	1080



2010 Traffic Citation / Warning Statistics

Violation Type	2004	2005	2006	2007	2008	2009	2010
Registration	354	492	604	689	870	1030	1213
Operator's License	724	747	781	685	844	828	953
Moving	2950	3089	3478	3451	4027	4780	4507
Equipment/ Safety Restraint	581	527	798	881	919	1451	1996
Equipment	93	101	57	56	45	73	108
TOTAL	4702	4956	5718	5762	6705	8162	8777

Citations Versus Warnings 2010

	Registration	Operators License	Moving Violations	Safety Restraint/ Equipment	Equipment
Citations	437	926	2530	806	7
Warnings	776	27	1977	1190	101

Traffic Crashes

Reportable Accident vs. Non- Reportable Accident – The difference between the two types of accidents is the estimated cost to repair damage sustained by a vehicle in the accident and whether a person is injured. An accident is considered reportable if the damage sustained by one vehicle is greater than \$1000 or a person is injured.

	2005	2006	2007	2008	2009	2010
Non reportable Accident	540	551	439	505	357	306
Reportable Accident	975	1002	894	1052	871	872
Total Number of Accidents	1515	1553	1333	1557	1228	1178

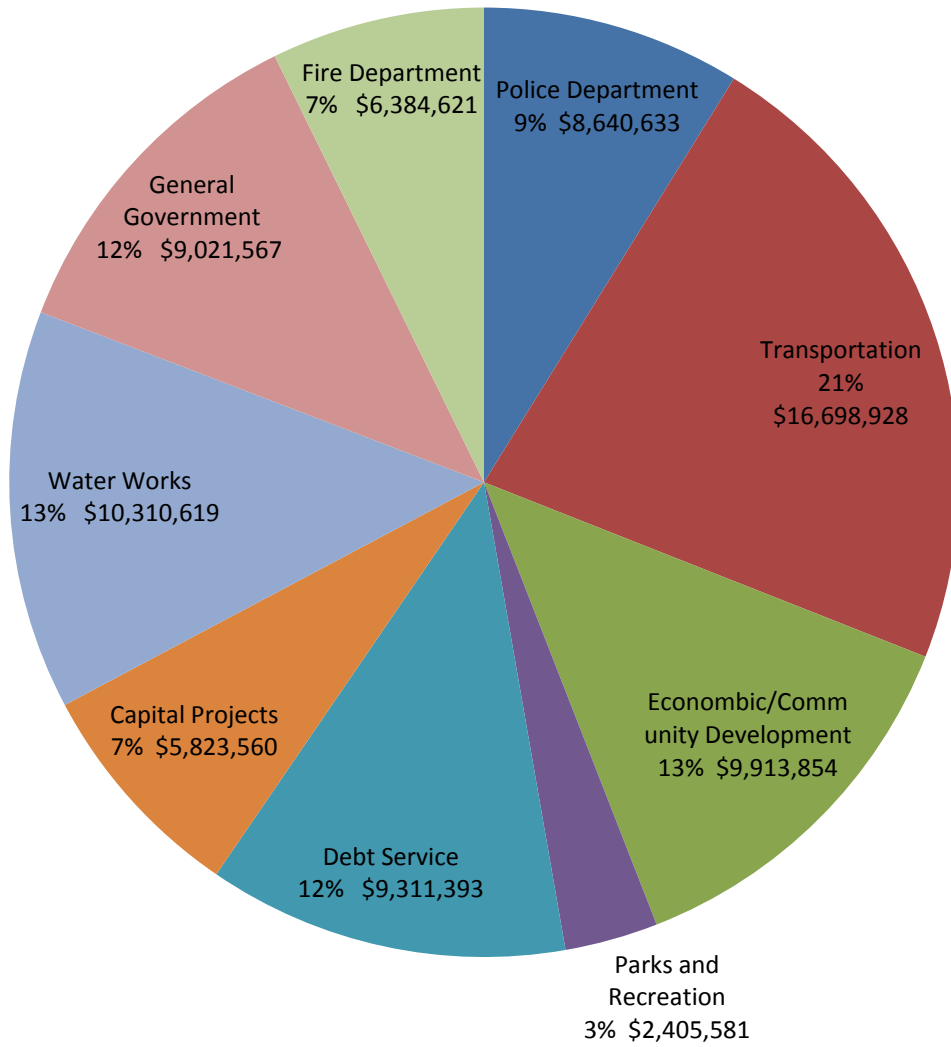
2010 Accident Types:

Property Damaged	932
Persons Injured	312
Vs. Parked Vehicle	200
Hit and Run	157
Private Property Involved	108
Alcohol Involved	51
Vs. Bicycle	17
Vs. Pedestrian	13
Drugs Involved	10
Vs. Deer	9
Motorcycles Involved	6
Persons Killed	2
Total	1178

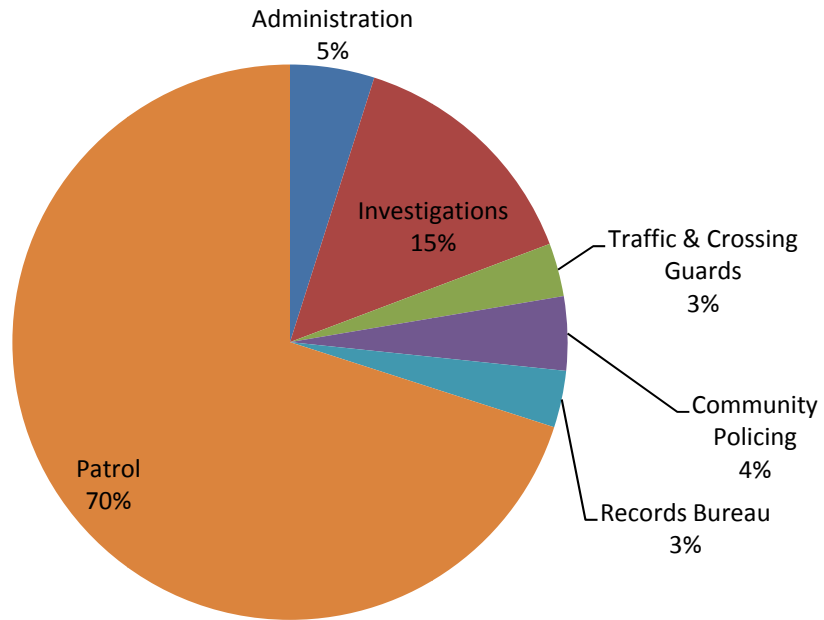
Top 20 Crash Locations:

S. 17 th Avenue / Stewart Avenue	23
W. Bridge Street / US 51	22
N. 1 st Street / Scott Street	20
N. 1 st Avenue / W. Bridge Street	17
Highway 52 Pk / Us 51	16
Grand Avenue / E. Thomas Street	16
N. 17 th Avenue / W. Bridge Street	13
Highway 52 Pk / Stewart Avenue	12
Cleveland Avenue / E. Thomas St.	12
Grand Avenue / Townline Road	12
County Rd K / US 51	11
N. 5 th Street / E. Bridge Street	11
N. 6 th Street / Washington Street	10
S. 18 th Avenue / Stewart Avenue	10
N. 6 th Street / Scott Street	10
S. 28 th Avenue / Highway 52 Pk	9
N. 3 rd Avenue / W. Bridge Street	9
S. 17 th Avenue / Rosecrans Street	8
S. 3 rd Avenue / Stewart Avenue	8
S. 17 th Avenue / W. Thomas Street	8

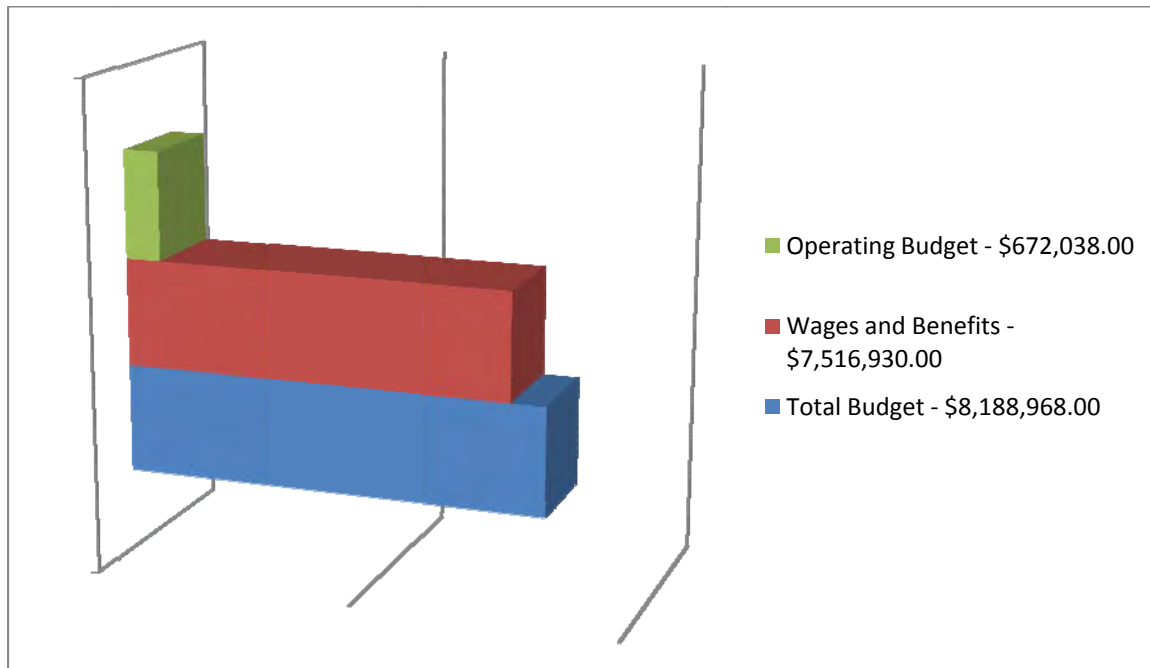
2010 City of Wausau Budget



2010 Police Wages and Benefits



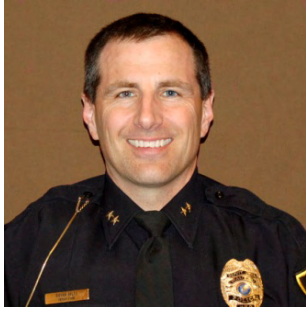
Police Budget Breakdown



2010 Wausau Police Department Staff



Chief Jeffrey Hardel



Deputy Chief B. Hilts



Detective Captain G. Hagenbucher



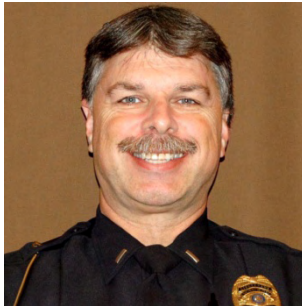
Captain D. Dachel



Lieutenant E. Gault



Lieutenant C. Dunbar



Lieutenant J. Wadinski



Lieutenant M. Pankow



Lieutenant L. Rennie



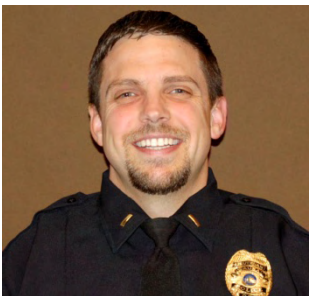
Lieutenant M. Juedes



Lieutenant W. Kolb



Lieutenant L. Heindel



Lieutenant B. Bliven



Detective M. Wogernese



Detective P. Weckwerth



Detective T. Morris



Detective J. Strobach



Detective C. Buckner



Detective K. Hansen



Detective M. Barnes



Officer T. Williams



Officer M. Klein



Officer S. Kickhaver



Officer R. Umlauf



Officer R. Wilcox



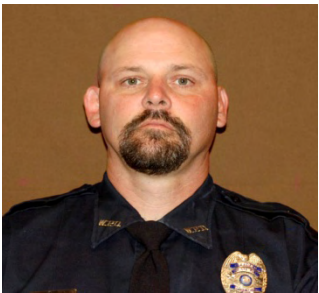
Officer D. Jordan



Officer M. Pilsner



Officer T. Hines



Officer M. Jaeger



Officer B. Tidquist



Officer M. Felder



Officer P. Piskoty



Officer K. Cornell



Officer D. Talg



Officer P. Yang



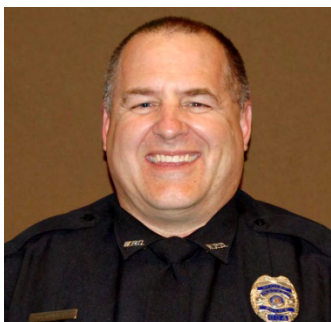
Officer M. Kurtzhals



Officer J. St. Amand



Officer T. Peterson



Officer D. Landretti



Officer J. Jurasin



Officer T. Baeten



Officer W. Taylor



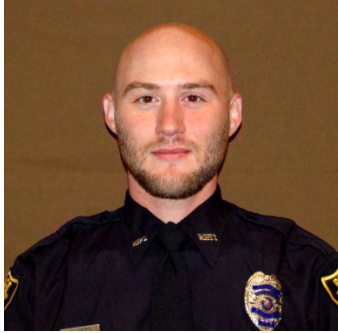
Officer M. Pauls



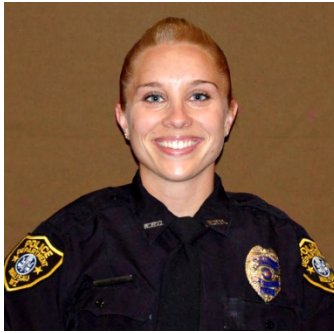
Officer D. Prokop



Officer D. Zander



Officer M. LaPorte



Officer J. Kurtzhals



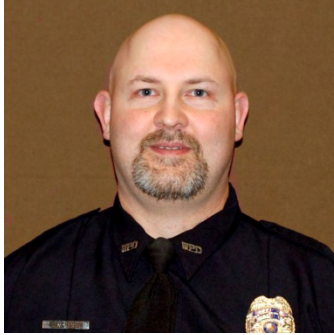
Officer S. Hunt



Officer N. Porath



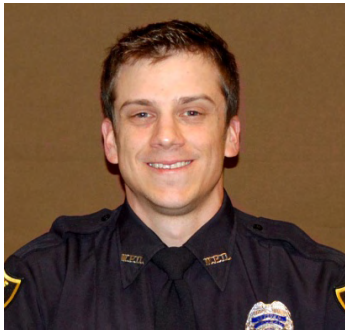
Officer A. Rience



Officer S. Fritsch



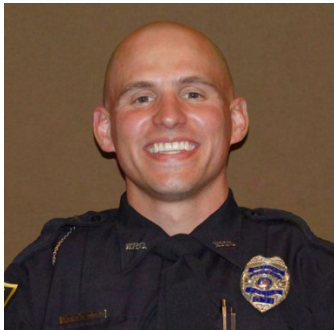
Officer B. Olson



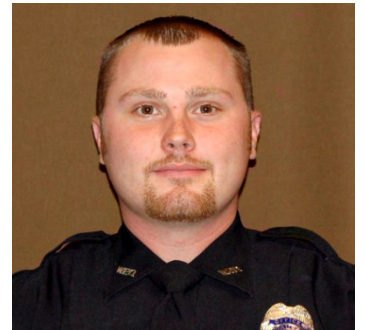
Officer N. Cihlar



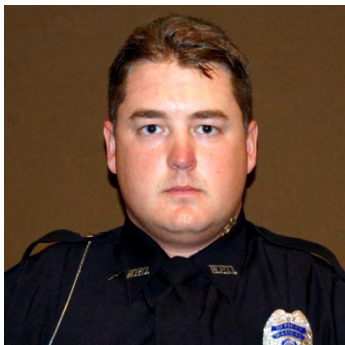
Officer N. Pekarske



Officer A. Hartwig



Officer J. Schremp



Officer M. VanLieshout



Officer S. Pierschalla



Officer J. Albee



Officer J. Kindlarski



Officer H. Lee



Officer K. Buchkoski



Officer B. Graham



Officer M. Kermbs



Officer J. Phillips



Officer P. Pettigrew



Officer E. Lemirand

2010 Wausau Police Department
Annual Budget Report
05/2011
Prepared by Kristi Schildt