



**WAUSAU POLICE DEPARTMENT
2011
ANNUAL REPORT**

Annual Report Index

<u><i>Item</i></u>	<u><i>Page Number</i></u>
<i>Command Staff</i>	2
<i>Organizational Chart</i>	3
<i>Wausau City Government</i>	4
<i>Police and Fire Commission</i>	5
<i>Service to Our Citizens</i>	6
<i>Mission Statement</i>	7
<i>Core Values</i>	8
<i>Chief of Police</i>	9
<i>Detective Captain Hagenbucher</i>	11
<i>Patrol Captain Dachel</i>	13
<i>2011 Department Retirements</i>	14
<i>2011 Department Awards/Recognition</i>	16
<i>2011 Department Promotions</i>	17
<i>2011 New Officers</i>	19
<i>Wausau Police Department Honor Guard</i>	20
<i>K9 Unit – A Breed of Their Own</i>	21
<i>Swat Tactical Team</i>	22
<i>Spear Training</i>	23
<i>Firearms Training</i>	24
<i>D.A.R.E. / Safety City</i>	25
<i>Explorer Post</i>	26
<i>Emergency Police</i>	27
<i>Citizen Academy</i>	28
<i>2011 Community Events</i>	29
<i>Wausau Police Benefit Association</i>	30
<i>Special Olympics Torch Run</i>	31
<i>September 11th Anniversary Events</i>	32
<i>1st Annual Eastbay/Wausau Police Department Half Marathon</i>	33
<i>MDA Motorcycle Ride</i>	33
<i>Various Events</i>	34
<i>Wausau Police Department Statistics</i>	35-42
<i>Budget Information</i>	43-44
<i>Staff Photos</i>	45-48



Command Staff:

Left to Right

Patrol Captain – Dwayne Dachel

Deputy Chief of Police – Bryan Hilts

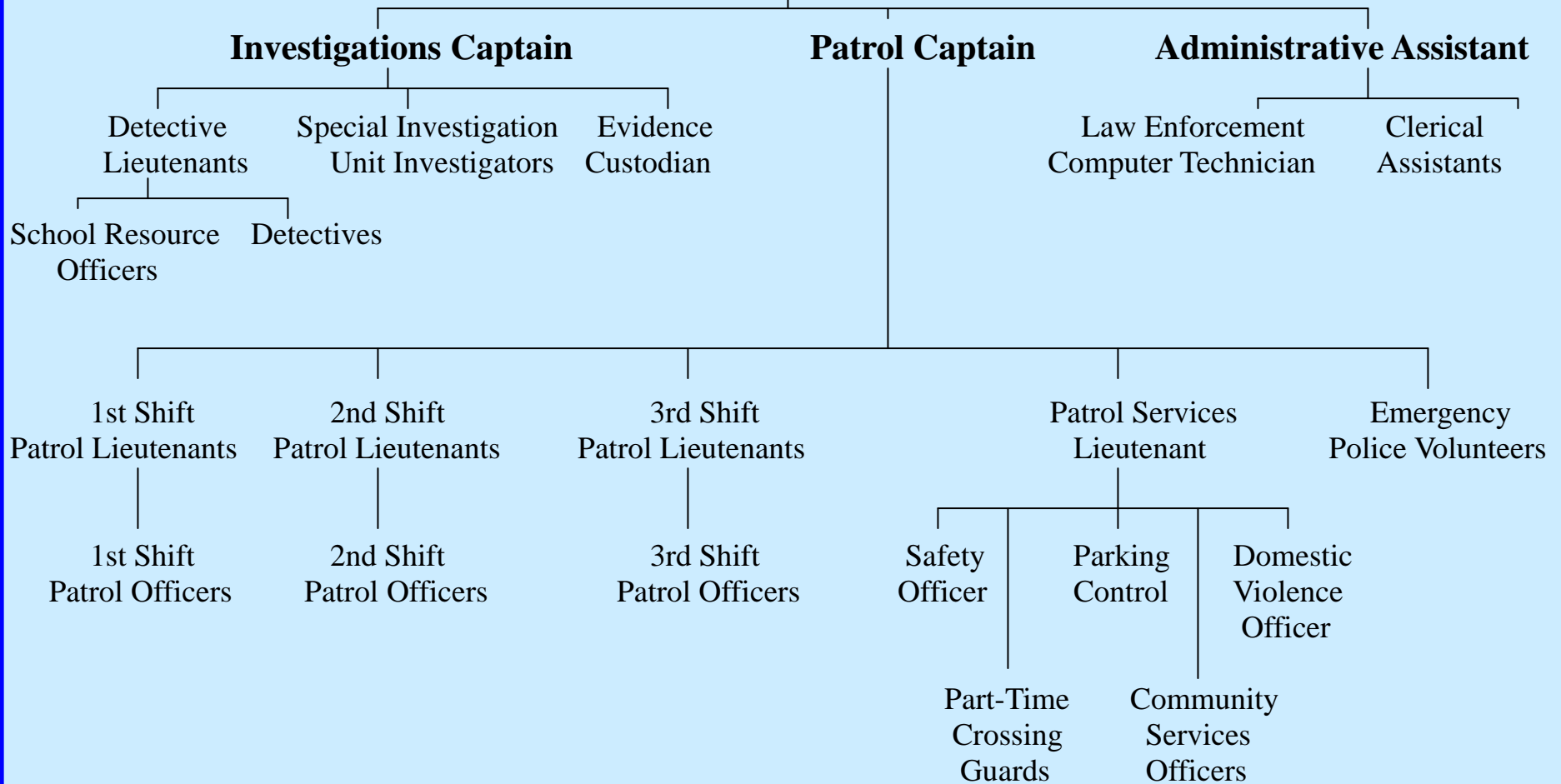
Chief of Police – Jeffrey Hardel

Investigations Captain – Greg Hagenbucher

Wausau Police Department Organizational Chart

Police Chief

Deputy Chief





Wausau City Government

James Tipple, Mayor
Ed Gale, City Council President

William P. Nagle
First Aldermanic District

Romey Wagner
Second Aldermanic District

Jonathan Havel
Third Aldermanic District

James Brezinski
Fourth Aldermanic District

Gary Gisselman
Fifth Aldermanic District

Gary Lee Klingbeil
Sixth Aldermanic District

Lisa Rasmussen
Seventh Aldermanic District

Karen Kellbach
Eighth Aldermanic District

David R. Oberbeck
Ninth Aldermanic District

David Nutting
Tenth Aldermanic District

Sherry Abitz
Eleventh Aldermanic District

Ed Gale
Twelfth Aldermanic District



Police and Fire Commission Members

Tony Patterson, Chair

William Graef

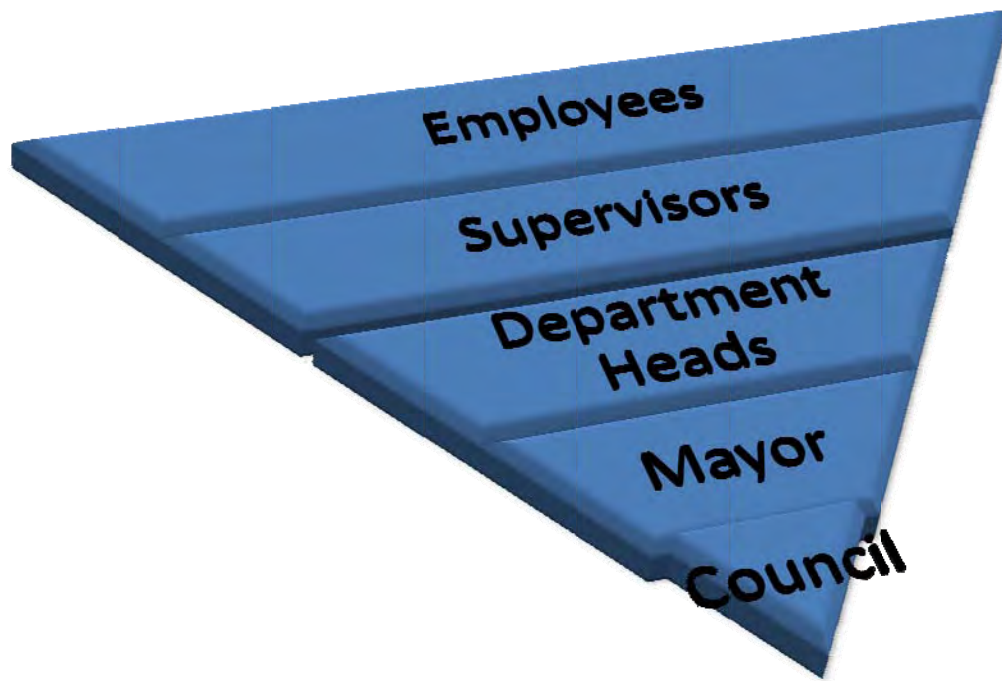
Laurin Jorstad

Dennis Huntimer

Cheryl Bahr




Service to Our Citizens



The graph above shows how the City is organized to carry out the Mission Statement and provide service to our citizens. The Council is the foundation of city government and is responsible for setting policy and creating a positive atmosphere, enabling the City to move forward. The Council works with and supports the Mayor and the department heads in combined efforts to provide the supervisors and employees what is needed to ultimately serve our citizens. Key to this is living by the Core Values. The City's core values guide daily operations and employee decisions.

Mission Statement



The Wausau Police Department, in response to our citizens, will provide services in the most effective and efficient manner in order to promote and enhance our living environment within the city and to the citizens of the community. The Wausau Police Department plans and encourages positive growth. We promote a positive community image by encouraging citizen involvement and civic pride.



The Wausau Police Department is committed to enhancing the quality of life, fostering peace, and identifying and resolving neighborhood problems within the City of Wausau by dedication to a continuing partnership with the community; to be accomplished through the empowerment of both police officers and citizens. The Wausau Police Department strives to deliver the police services the citizens want, rather than what we think they need.



The mission represents the department's commitment to the concepts of quality performance. All members are expected to work consistently in a quality manner in the daily performance of those duties, responsibilities, and work tasks associated with the department's mission. A quality manner signals that performance outcomes comply with the performance standards established for our agency and for each member. Each member of the department is required to accept the responsibility for the achievement of this mission and the concepts of quality service.

WAUSAU POLICE DEPARTMENT CORE VALUES

Values embody our philosophy of policing and set forth our hopes for the future of our community, our profession, our department, and ourselves. We recognize that the following values, this philosophy of policing, will always be a yardstick against which we must measure ourselves, our efforts, our programs, our regulations, and our priorities. Whether sworn or civilian, full-time or part-time, paid or volunteer, we are proud to belong to this department and to adopt the following values:



Human Life - Above all else, the Wausau Police Department cherishes human life and dignity.

Excellence -The Wausau Police Department strives for personal and professional excellence, dedication to duty, and services to the public.

Responsiveness - The Wausau Police Department will be responsive to the needs of the community, working together to solve problems of mutual concern. We will be fair and decent, reflecting our professional ethics and values.

Compassion - The Wausau Police Department will show empathy and caring for victims, people who seek our help, and all people with whom we come in contact.

Law & Constitution -The Wausau Police Department believes in the principles embodied in the Constitution of the United States, and the constitution of the State of Wisconsin. We recognize the authority of the federal, state, and local laws.

Pride - The Wausau Police Department takes pride in our department and in our profession. We are proud of who we are and what we do. We are proud of the trust which the public places in us individually, as an agency, and in our profession.

Integrity -The Wausau Police Department believes that integrity is the basis for personal and public trust.

Cooperation - The Wausau Police Department believes that cooperation and respect among ourselves, members of the community, governmental entities, and other law enforcement agencies will enable us to combine our diverse backgrounds, skills, and styles to achieve common goals.

Enterprising - The Wausau Police Department will be diligent in keeping up with changing times, both in technological and human resource areas. We encourage officer creativity, while still maintaining fiscal responsibility to the community.



Chief of Police, Jeffrey Hardel

Dear Citizens of Wausau, Mayor Tipple, Common Council of the City of Wausau, and the Wausau Police & Fire Commission:

It is with pleasure that we present you with the Wausau Police Department Annual Report for 2011. This document serves as a window to our department. We invite you to learn more about our department and our profession. Learn more about our purpose, our philosophy, our dedication, and our operations. Should you have questions, please do not hesitate to contact one of the command officers for assistance.

The Wausau Police Department continues to be challenged by the various criminal elements that society offers. Internet fraud, internet scams, and internet crimes in general, including identity theft, continue to increase at a high percentage. Drug use, drug abuse, and drug sales continue to be a focus of our enforcement efforts, along with the ancillary crimes associated with the drug trade. Heroin specifically, has generated more law enforcement attention than ever before. The increase in heroin use is supported by many more traffic stops where heroin is found, officers conducting search warrants locating heroin, the number of heroin overdoses, and heroin overdose deaths that our community and the surrounding communities have experienced. Drug use, drug sales, and overall drug abuse continue to drive criminal activity. Drugs play a significant role in many crimes as addicts attempt to sustain their habit.

The Wausau Police Department continues to respond to the community concerns in regards to traffic enforcement. Neighborhood or sector meetings are held each year which allow citizens the opportunity to share their neighborhood concerns or request special or specific enforcement efforts. Most concerns are related to traffic enforcement. Officers responded to these concerns by issuing a total of 12,163 citations and/or warnings.

With over 37,812 calls for service generating over 52,025 officer responses in our community, the demands and expectations placed on our officers is very high. That is just one of the many things that make our profession special, unique, and rewarding. This job requires great character and strong ethical make up. It takes a special person to commit themselves to the highest professional standards that we adhere to. Wausau is very fortunate to have outstanding men and women who comprise the Wausau Police Department. On a daily basis, the command staff witnesses the dedication and professionalism that our officers exhibit. This reinforces the significance of hiring the best candidates who will carry out our mission and support our philosophy. Officers are committed to providing quality service and making a difference in our community.

I encourage all citizens to increase their level of involvement with us, to be our partners in policing. Whether that involvement means reporting crime, having keen eyes and ears as a good witness, being part of a neighborhood partnership or neighborhood watch group, joining our Emergency Police volunteer services, attending neighborhood meetings, or being supportive in other areas that help your sector officers do the best job they can.

Other services that we provide that might be of interest to you are: Security Surveys, Citizen's Police Academy, Explorer Post, and car seat inspections. Find out more about these programs as you browse the Annual Report.

I am very honored to be the Chief of Police in this great community. We will continue to strive to provide the best service we can and improve the quality of life for all residents of the City of Wausau.

Sincerely,

Jeff Hardel
Chief of Police
Wausau Police Department



Investigations Captain – Greg Hagenbucher

The Wausau Police Department Investigative Services Bureau is dedicated to providing the highest quality of investigative, scientific, and information services for the purpose of maintaining law and order and protecting life and property. Members of the Investigative Services Bureau responds directly to crime scenes, and does their best to combat and reduce crime by conducting prompt, diligent, and professional investigations. Detectives maximize the use of all technological resources to solve crimes, track down and apprehend suspects, as well as to locate missing persons, and recover and return stolen property to the rightful owner.

In 2011, the Investigative Services Bureau went through several personnel changes. Two detectives retired from the Police Department, and one detective was promoted to patrol lieutenant. By the end of 2011, all three detectives were replaced. Two officers were promoted from the Marathon County Special Investigative Unit (SIU), and one patrol officer was promoted to the Investigative Services Bureau. In addition, two patrol officers were added to Marathon County's SIU. The Wausau Police Department's Investigative Bureau now consists of six general detectives, three school resource officers (one detective and two patrol officers) two drug investigators who work with the Marathon County Special Investigative Unit, two detective lieutenants, and one captain. A detective and a detective supervisor are on-call 24/7.

In 2011, the Investigative Services Bureau conducted a number of major investigations. Some of these cases included:

In 2011, detectives continued to work leads on the Stephanie Low missing person case. Ms. Low, a twenty-two year old female, was reported missing from her Westside Wausau apartment on October 10, 2010. Evidence found in her apartment lead officers to believe she had disappeared under suspicious circumstances. Detectives have conducted over one hundred-fifty interviews, and followed up on over three hundred thirty-five leads to date. This case will remain open, and detectives will continue to complete any leads that come to our attention, until she is located.

In 2011, detectives and supervisors in the Investigative Services Bureau assisted the Marathon County District Attorney with court room testimony, and evidence preparation for the jury trial of Raul Ponce-Rocha. Raul Ponce-Rocha was prosecuted for the intentional homicide of Breanna Schneller, which happened on May 2, 2009. The trial ended on January 13, 2011, with a guilty verdict. Raul Ponce-Rocha was later sentenced to life in prison with no chance of parole.

In the fall of 2011, several armed robberies took place in Wausau and the surrounding area jurisdictions. Businesses robbed at gunpoint in the City of Wausau were Taco Bell,

Hardee's and the Callon Street Pub, all within one week. The investigation into these robberies, led to a multijurisdictional investigation that involved five different agencies. After a four month investigation, several of the suspects were arrested and are awaiting prosecution in the court system. Numerous items of stolen property and firearms have been recovered, and the investigation continues.

In 2011, video surveillance has played an ever increasing roll, in the identification of suspects involved in crimes. Numerous retail theft and burglary suspects were identified, after video surveillance of the suspects had been gathered.

Last year saw a large increase in counterfeit bill passing cases. In 2011, seventy-five reports were taken by officers, where one hundred-thirty three counterfeit bills were passed. Suspects were identified in about forty-three of the cases, and these people were arrested or referred to the District Attorney.

Identity theft, internet crimes, cell phone crimes, and computer fraud are still on the rise. Several years ago, the department had to rely on the Wisconsin State Crime Lab to process all evidence related to cell phones and computers. In some cases, it would take up to a year to analyze the evidence. Today, because of the highly specialized training and equipment Wausau Police Detectives have received, the department can process almost any type of computer or cell phone related crime in a matter of days. In 2011, victims reported nearly two hundred crimes that involved the internet and cell phones. Some include:

- Identity theft*
- Counterfeit checks*
- Fraudulent checks*
- Bank/loan fraud*
- ATM card use in other states and foreign countries*
- Lottery scams*
- Re-mailing scams*
- Internet fraud and theft*
- Social security fraud*
- Cell phones threats*
- Pornography on cell phones*

In addition, the Investigative Services Bureau has investigated numerous robberies, both armed and unarmed, several aggravated assaults, many arsons, over one hundred sexual assaults (juvenile & adult), a few embezzlement cases, and numerous burglaries and property crimes.

Investigators continue to attend specialized training in the areas of arson, homicide, sexual assault, financial crimes, computer crimes, and Internet fraud. The Investigative Services Bureau is committed to providing the best quality service to the public in an effort to solve crimes that need specialized follow-up.

Sincerely,

Gregory Hagenbucher
Detective Captain
Wausau Police Department



PATROL CAPTAIN – DWAYNE DACHEL

The Patrol Bureau is the uniformed division of the department consisting of one captain, seven lieutenants, forty-four patrol officers, one parking enforcement specialist, three community service officers. The officers in the Patrol Bureau respond to all calls for service made to the Wausau Police Department, which include traffic, criminal investigations, civil complaints, and service calls. The patrol officers handle the majority of the calls for service completely, with only major criminal cases that need special investigation, being transferred to the Investigative Services Bureau.

The Patrol Bureau is staffed around the clock, all year long. As a testament to the officer's dedication to the city and the citizens of Wausau, they miss important family functions; work on holidays and weekends in all weather and in all situations. They have to work through situations that try their patience while maintaining composure, having compassion and paying attention to detail.

The Patrol Bureau is the core of the police department and is at the heart of Community Oriented Policing for the department. Officers interact with the citizens on a day to day basis and also hold many positions on community boards and citizen groups to help cement our bond with the community. Through these partnerships, the Patrol Bureau and the department assist the community in becoming a better place to live.

Many patrol officers have additional duty assignments that augment their patrol activities including Field Training Officer (training the new officers to become Wausau's Finest), Bike Patrol, Special Weapons and Tactics (SWAT), Dive team, advisor to the Explorer Post, coordinating Citizen's Academy, Drug Recognition Experts, Canine Officers, D.A.R.E instructors, and more. These officers enhance the department's mission by eagerly taking on additional special assignments. Without officers voluntarily taking on these extra duties, the Wausau Police Department would not be able to provide the high level of service that the community deserves.

The Patrol Bureau is augmented by the Wausau Emergency Police Unit. The Emergency Police Unit are civilian volunteers that assist us, sometimes at a moment's notice, in providing security, traffic control during parades and other special events, and emergencies. During 2011, the Emergency Police volunteered in excess of 1,700 hours for the community.

The dedication shown by each of these individuals makes me proud to serve with them.

Sincerely,
Dwayne J. Dachel
Patrol Captain

2011 Department Retirements - 30 years of service



Detective Terry Morris and family

Terry was promoted to the Investigative Services Bureau in 1996. Terry became one of the most trained and reliable detectives in the Investigative Services Bureau and was involved in all the community's high profile cases during his tenure. Terry was known for his meticulous work as a crime scene investigator and recovered many pieces of evidence at various crime scenes.



Detective Pete Weckwerth and family

Pete was promoted to the Investigative Services Bureau in 1994 and was eventually assigned to the position of school resource officer and was assigned to Wausau East High School where he remained until his retirement. Pete was well respected by the Wausau community for his dedication and devoted service.

2011 Department Retirements - 13 years of service



Jayne Wood - Victim/Witness Specialist

Retiring in April after 13 years of service, Jayne was known for her compassion and patience during a person's time of need. No matter what time of the day or night, Jayne was there when someone else was in need always listening with a kind heart.

2011 Department Awards/Recognitions



Officer Wilcox, Chief Hardel, and Lieutenant Bliven accepting an award from the Alcohol and Other Drug Partnership Council, for their work on the social host ordinance



Detective Kay Hansen was honored by the Oral History Projects of Wisconsin Group by being named one of the “Wisconsin Women: Celebrating Their Contributions” for her outstanding work with the Wausau Police Department

2011 Department Promotions

In 2011, the Wausau Police Department saw many changes within its staffing. Officer Nathan Cihlar was promoted to detective. Nathan Pauls and Jennifer Holz were promoted from SIU investigators to detectives. And Detective Matthew Barnes was promoted to lieutenant.



Detective Nathan Cihlar with Chief Hardel



Detective Nathan Pauls with Chief Hardel



Detective Jennifer Holz



Patrol Lieutenant Matt Barnes

2011 New Officers



Officer Koua Thao



Officer Sarah Bedish

Wausau Police Department Honor Guard

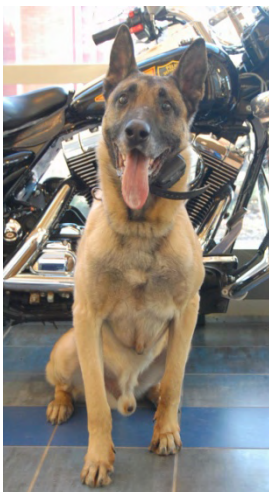
The Wausau Police Department Honor Guard was formed in 2007. Current team members include Lieutenants Ben Bliven, Matt Barnes, and James Wadinski, Detective Nathan Pauls, and Officers Pao Yang, Joe St. Amand, Melinda Pauls, and Brent Olson. Since the team was formed, members have received training in honor guard responsibilities including flag raising, parade formation, casket guard, and more.

The honor guard attends law enforcement funerals around the state to pay respects to fallen officers and represent the Wausau Police Department. The honor guard team has marched in several parades carrying the American flag and State of Wisconsin flag. These parades include the Memorial Day parade, Labor Day parade, and Holiday parade. The honor guard has also attended several law enforcement memorial events.



K9 UNIT – A BREED OF THEIR OWN

The Wausau Police Department K9 program was started in 1997 with two dogs. Officer David Jordan and Officer Mark Jaeger were selected as the handlers. Together, they attended training at Vohne Liche Kennels in Denver, IN under trainer Ken Licklider. Officer Jordan worked a female German Shepherd named Da Jana and Officer Jaeger worked a Dutch Shepherd named Sander. Sander retired in 2005 and Da Jana retired in 2006. Officer Jaeger received a Belgian Malanois named Pluto, who is currently working on the second shift. Officer Jordan received a Belgian Malanois named Mabel, who is currently working the third shift. In 2005, a third K9 was added to the program. Officer David Landretti was chosen as the handler and attended Vohne Liche Kennels where he received his current partner a male German Shepherd named Foster. Throughout the years of service all of the K9's have served the area well. The K9's are all trained as dual purpose K9's and are used to locate four types of drugs; marijuana, cocaine, heroin, and methamphetamine. The K9's are also used to locate people through building searches, area searches, and tracking. Each of the K9's live with their handlers when not on duty. When on duty the K9's are used for various scenarios including sniffing vehicles on traffic stops to searching buildings for people and drugs. The K9's are used to assist all the local schools by sniffing the lockers and vehicles on school property for any illegal drugs.



Pluto



Foster



Mabel

2011 SWAT TACTICAL TEAM IN TRAINING



2011 SPEAR TRAINING
(Spontaneous Protection Enabling Accelerated Response)



2011

*Firearms
Training*



D.A.R.E.

2011 saw approximately 700 children graduate from the D.A.R.E. program. D.A.R.E has been the most popular substance abuse education and prevention program for our school kids over the last 20+ years. D.A.R.E. traditionally targets fifth graders and has been shown to be a positive connection between students and law enforcement. D.A.R.E. is taught by a law enforcement officer who visits classrooms for about one hour each week for 12 weeks. The main focus is on good decision making, drugs, peer pressure, positive alternatives, safety, and bullying. Officers also visit lower grades (kindergarten through fourth grade). It is a great way for the children to understand the job of law enforcement officers and how important it is to follow rules and laws for their safety.



Safety City

2011 had 150 children participate in the Safety City program. The Safety City program is targeted for children who are 5 years old and are beginning kindergarten. It is operated jointly by the Wausau School District and the Wausau Police Department. This program trains youngsters in areas of bicycle safety, pedestrian safety, safety around strangers, safety from poisons, and bus safety. Safety City is a one week program that is offered every summer for three weeks. There is a minimal fee for enrollment in the program for any child that resides within the Wausau School District.



2011 Explorer Post

The Wausau Police Department Explorer Post is a joint effort with the Village of Kronenwetter Police Department and is designed for youth between the ages of 15 and 21, who are interested in learning about law enforcement. The end of 2011 marked the seventh year the Wausau Police Department Explorer Post has been active in its current form, and had approximately 20 area youth participants. The Explorer Post is a self funded program where the members conduct fundraisers and receive donations throughout the year in order to participate in competitions and trips.

The explorer post participated in many events during the 2011 year by assisting with; parking at the Balloon Rally, Kronenwetter Fun Days, assisting with traffic control at the Eastbay/Wausau Police Department 1st Annual ½ Marathon, Globe University open house, and the Relay for Life.

On November 8, 2011 a member of the Wausau Police Department Law Enforcement Explorer Post #0442, Samantha Micke, was awarded with their first annual Academic Scholarship. Micke has been with the explorer post #0442 for one and a half years, showing that she is both a leader in the post and the community. She has helped by cleaning the community centers and river shore lines, feeding those who could not afford food, and directing traffic for the Balloon Rally. “Her continued commitment to the explorer post has earned her the recognition of Explorer of the Year in December 2010 (for post #0442),” according to Police Officer / Explorer Post Advisor Matthew Van Lieshout. Congratulations Samantha!



Wausau Police Officer B. Olson, Samantha Micke,
Kronenwetter Police Officer L. Lopes-Serrao, and Wausau Police Officer A. Reince

Wausau Emergency Police

In 2011, the Emergency Police celebrated 60 years of service to the Wausau community. On May 14, 2011 a celebration was held to thank the men and women of the community who volunteer hundreds of hours each year to work the many events held in the Wausau area, helping to make the events safe for the citizens of Wausau.



Lieutenant Mike Lotharius and Captain Frank Schuelke received the President's Volunteer Service Award. They both have been with the unit for over 25 years.



Director Larry Jaeger showcases the new shirt and patch for the Wausau Emergency Police Unit

2011 Citizen Academy

The Wausau Police Department embraces a style of policing that involves a close working relationship with our community. In an effort to strengthen and enhance this relationship, our agency offers a creative venture to develop an increased partnership with our citizens.

Our department designed an eight week police course for citizens of Wausau, and the surrounding communities called “Citizen’s Police Academy.” Our Citizen’s Police Academy has three goals:

- 1- Provide citizens with a better understanding and knowledge of the Wausau Police Department’s operations, practices, and functions
- 2- Strengthen the community’s support and involvement
- 3- Create better communication and working relationships between the citizens and Wausau Police Department.

Citizens learn about drug identification/investigations, OWI investigations, and interview/statement analysis. Citizens also have an opportunity to participate in simulated firearms training and a demonstration of the Taser X26 (electronic control weapon). Citizens also tour the Wausau Police Department, Marathon County Jail, and Marathon County Dispatch Center.

In 2011, the Citizen’s Academy had 14 graduates through the spring and fall sessions. The Wausau Police Department looks forward to continuing this program with the community’s support.

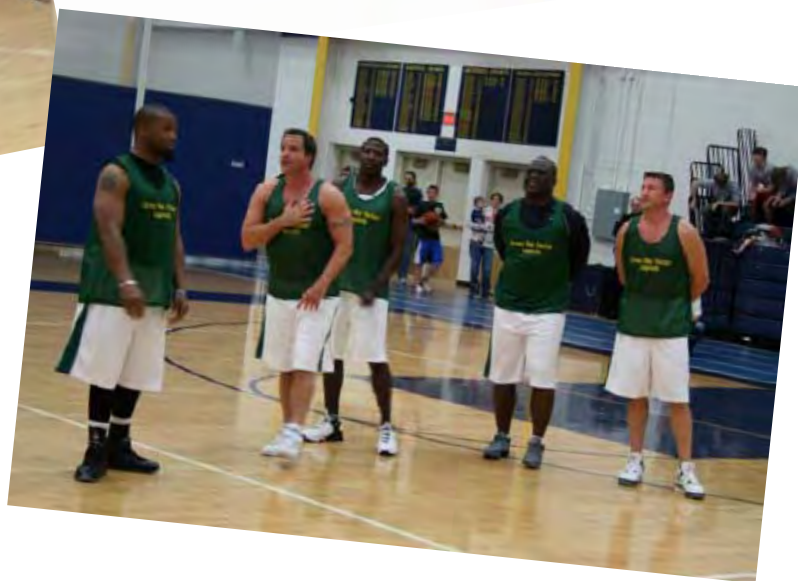


2011 Community Events



*Wausau Police Benefit Association/Green Bay Packer Basketball Game
2011 Special Olympics Torch Run
Wausau Labor Day Parade
September 11th Memorial Services
1st Annual Eastbay/Wausau Police Department 1/2 Marathon
2011 MDA Motorcycle Ride
2011 Texas Roadhouse – Salvation Army Holiday Lunch
Discovery Channel Documentary
Control Burn Training
Jaycees 4th of July Celebration
Wisconsin Valley Fair
Holiday Parade*

**Wausau Police Benefit Association
Sponsors the Green Bay Packer
Legend Basketball Game against the
Wausau Police**



The Wausau Police Benefit Association (WPBA), is a fraternal organization with it's membership consisting of active Wausau Police Officers. The WPBA was started in the mid 1950s, by Officers of the Wausau Police Department, to enhance the image of the Wausau Police Department and support the welfare of its Officers.

The WPBA conducts an annual fundraiser in which Wausau Police Officers play the Green Bay Packers in basketball. Although the Officers give it their best, they have yet to beat the Packers!

Since 1999, the WPBA has donated in excess of \$50,000 dollars supporting area nonprofit charities and initiatives. The WPBA purchases and delivers frozen turkeys to the Neighbors Place each Thanksgiving and pays for and serves meals at St Pauls Mission. Recently, the WPBA has paid for Veterans of WWII to attend the Honor Flight to Washington DC. The WPBA has provided financial support to The Women's Community, the School Safety Patrol, the Wausau P.D. Explorer Post, and the Wausau Area Hmong Mutual Association. The WPBA provides scholarships to students pursuing law enforcement careers and supports a death benefit program for the Officers

A project undertaken by the WPBA, in partnership with the Alexander and Dudley Foundations, was the creation of a fitness center, at the Wausau Police Department. Many Officers have found the convenience of having fitness equipment at the Wausau P.D. has increased their opportunities to exercise and stay in shape.



2011 Special Olympics Torch Run

Wausau Police Department officers and staff have run the Wausau leg of the torch run since 1986, proudly caring the torch as they run to Cedar Creek-Mall. Wisconsin's Law Enforcement Torch Run has raised nearly \$17 million for Special Olympics since 1986.





Lt. Kolb, Mrs Kolb, Isabella Cornell, Officer Cornell

September 11, 2011 marked the 10th anniversary of the attacks on September 11, 2011. Many events took place in the area to remember the lives lost on 911. Many of our officers participated in the events in the area, including the “tower climb”, where each individual wore a name of a person who was killed on that day. They walked up and down 20 flights of stairs. Afterwards they rang a bell and read the name of the individual they represented.



Lt. Kolb and his wife Julie



Lt. Bliven and Lt. Barnes, Wausau Police Department Honor Guard members

Members of the Honor Guard performed a flag raising ceremony at the Rest Lawn Cemetery during a 911 event. Below the Marathon County Sheriff’s Department members performed a 21 Gun Salute and Taps at the same ceremony.

Marathon County Sheriff’s Department Honor Guard members





1st Annual Eastbay/Wausau Police Department Half Marathon benefitting Special Olympics was held on September 24, 2011. We had a big success and look forward to another run in October 2012



Officers lead the MDA Motorcycle Ride in 2011
From left to right: Motorcycle Officer Hunt, Lieutenant Wadinski, & Motorcycle Officer Klein



Texas Roadhouse, Holiday lunch for Salvation Army ,
being served by Captain Dachel



Discovery Channel filming documentary on Breanna Schneller case,
Detective C. Buckner being interviewed.



Detectives train with the Fire Department on the controlled burn of
the house adjacent to the Police Department. Detectives N. Cihlar,
N. Pauls, J. Holz



Control burn on property adjacent to the
Police Department

*2011
Wausau Police Department Statistics*



CALLS FOR SERVICE

In 2011, there were a total of 37,812 calls for service, numerous calls required more than one officer to respond. In 2010 there were 32,182 officer responses including multiple officer response calls.

2010	Type of Call for Service	2011
2841	Criminal Misc	2586
8036	Traffic Stops	8617
2020	Service Misc	1466
1834	Follow Up Investigation Stops	1954
1072	Traffic Misc	958
1137	Traffic Accidents	1217
1043	Suspicious Activity	1079
584	Emotionally Disturbed Person	655
544	Hang Up Calls	498
498	Alarms	396
502	Warrant Service	497
636	Noise Complaints	574
486	Medical Emergencies	483
901	Extra Patrol	1619
308	Fights	315
549	Disabled Vehicles	566
929	Dog Complaints	1061
252	Attempt to Locate Juvenile	337
933	Probation/Parole Checks	692
121	Telephone Messages	121
636	Civil Complaints	671
346	Lost & Found	264
258	Hit & Run Accidents	209
352	Traffic Hazards	309
119	Traffic Accidents with Injuries	130
49	Attempt to Locate Vehicle	53
203	Vehicle Lock Outs	160
49	Attempt to Locate	53
207	Bar Checks	183
33	Threats with Weapons	21
21	Information	66
140	Juvenile Disturbances	204
117	Prisoner Transports	127
213	Process Service	248
55	Structure Fires	47
117	Funeral Escorts	93
6	Overnight Parking Complaints	4
110	Gas Skips	99
81	Battery	87
266	Burglary	252
12	Robbery	20
76	Sexual Assault	95
25	Stolen Vehicle	38
352	Theft from Building	255

2011 TRAFFIC CRASHES

Reportable Accident vs. Non-Reportable Accident – The difference between the two types of accidents is the estimated cost to repair damage sustained by a vehicle in the accident and whether a person is injured. An accident is considered reportable if the damage sustained by one vehicle is greater than \$1000 or a person is injured or if damage to government property occurs with a value over \$200.

	2006	2007	2008	2009	2010	2011
<i>Non Reportable Accident</i>	551	439	505	357	306	257
<i>Reportable Accident</i>	1002	894	1052	871	872	964
<i>Total Accidents</i>	1553	1333	1557	1228	1178	1221

2011 Accident Type

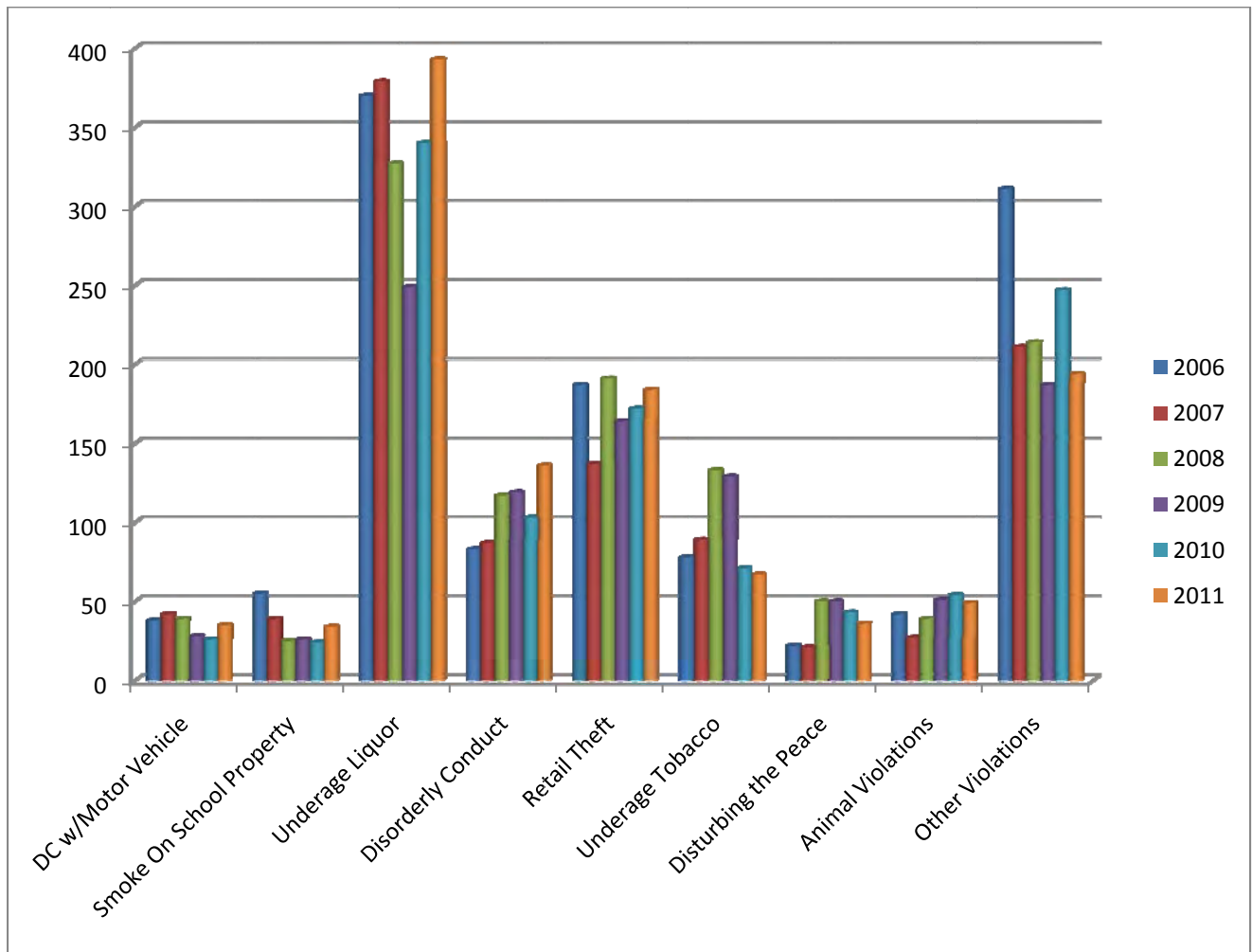
1001 Property Damaged
 325 Persons Injured
 185 Vs. Parked Vehicle
 151 Hit and Run
 97 Private Property
 48 Alcohol Involved
 22 Vs. Bicycle
 15 Vs. Pedestrian
 6 Drugs Involved
 18 Vs. Deer
 20 Motorcycles Involved
 2 Persons Killed

Top 20 Crash Locations:

W. Bridge St/ US 51
 S 17th Ave/ Stewart Ave
 Grand Ave/ Townline Rd
 N 1st St/ Scott St
 Grand Ave / E Thomas St
 Grand Ave / Sturgeon Eddy Rd
 Highway 52 Pk / US 51 15
 N 5th St / Scott ST
 S 17th Ave / Sherman St
 S 28th Ave/ Stewart Ave
 S 3rd Ave / Stewart Ave
 County Rd K / US 51
 N 3rd Ave / W Bridge St
 S 3rd Ave / W Bridge St
 Grand Ave / E Kent St
 N 1st Ave / W Bridge St
 Grand Ave / Henrietta St
 N 5th St / E Bridge St
 S 1st Ave / Stewart Ave
 N 17th Ave / W Bridge St

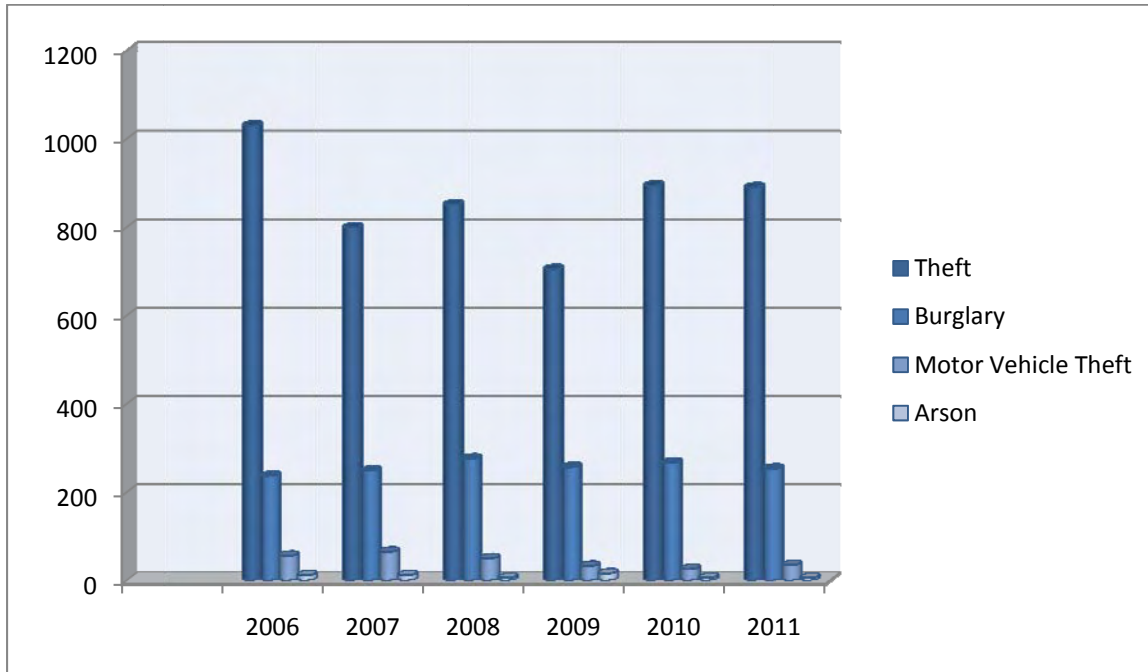
Municipal Citations

	2006	2007	2008	2009	2010	2011
DC w/ Motor Vehicle	38	42	39	28	26	35
Smoke On School Property	55	39	25	26	24	34
Underage Liquor	370	379	327	249	340	393
Disorderly Conduct	83	87	117	119	103	136
Retail Theft	187	137	191	164	172	184
Underage Tobacco	78	89	133	129	71	67
Disturbing the Peace	22	21	50	50	43	36
Animal Violations	42	27	39	51	54	49
Other Violations	311	211	214	187	247	194
Total	1186	1032	1135	1003	1080	1128



Property Crime Index

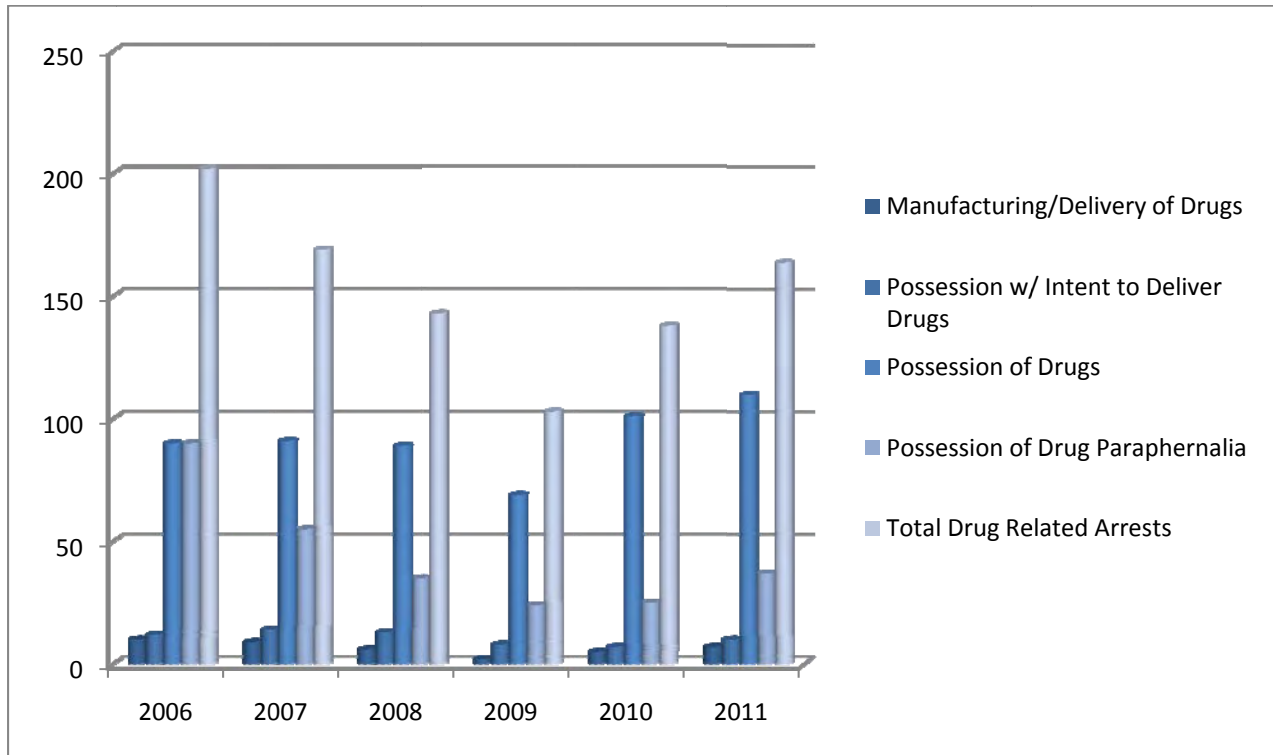
Offenses do not involve face-to-face confrontation between victim and perpetrator and are referred to as property offenses. These are burglary, theft, motor vehicle theft, and arson.



	2006	2007	2008	2009	2010	2011
Theft	826	1030	799	851	705	890
Burglary	251	237	249	276	257	253
Theft of Vehicle	48	56	65	50	33	35
Arson	10	12	12	6	16	6

Drug Enforcement

In 2011, drug use continued to be a problem in the City of Wausau. While the number of drug arrests increased overall, our department continues to dedicate itself to fighting drugs and drug related crimes.

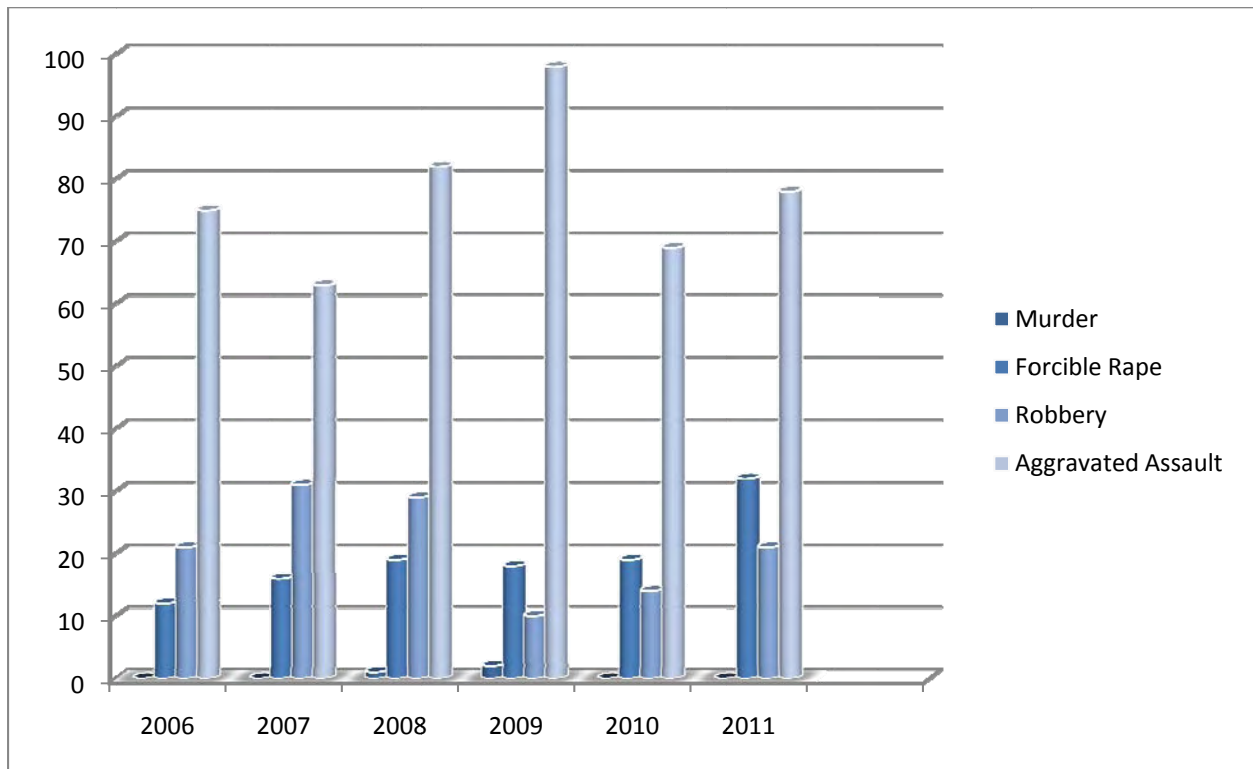


	Manufacturing/Delivery of Drugs	Possession w/ Intent to Deliver Drugs	Possession of Drugs	Possession of Drug Paraphernalia	Total Drug Related Arrests
2006	10	12	90	90	202
2007	9	14	91	55	169
2008	6	13	89	35	143
2009	2	8	69	24	103
2010	5	7	101	25	138
2011	7	10	110	37	164

VIOLENT CRIME INDEX – Offenses involving face-to-face confrontation between victim and perpetrator, and are referred to as violent offenses. These are murder, and non-negligent manslaughter, forcible rape, robbery, and aggravated assault.

Murder	0	0	1	2	0	0
Forcible Rape	12	16	19	18	19	32
Robbery	21	31	29	10	14	21
Aggravated Assault	75	63	82	98	69	78

In 2011, the Wausau Police Department investigated a total of 131 reported violent crimes. The overall percentage of change from 2010 resulted in an increase in reported violent crimes within the City of Wausau.



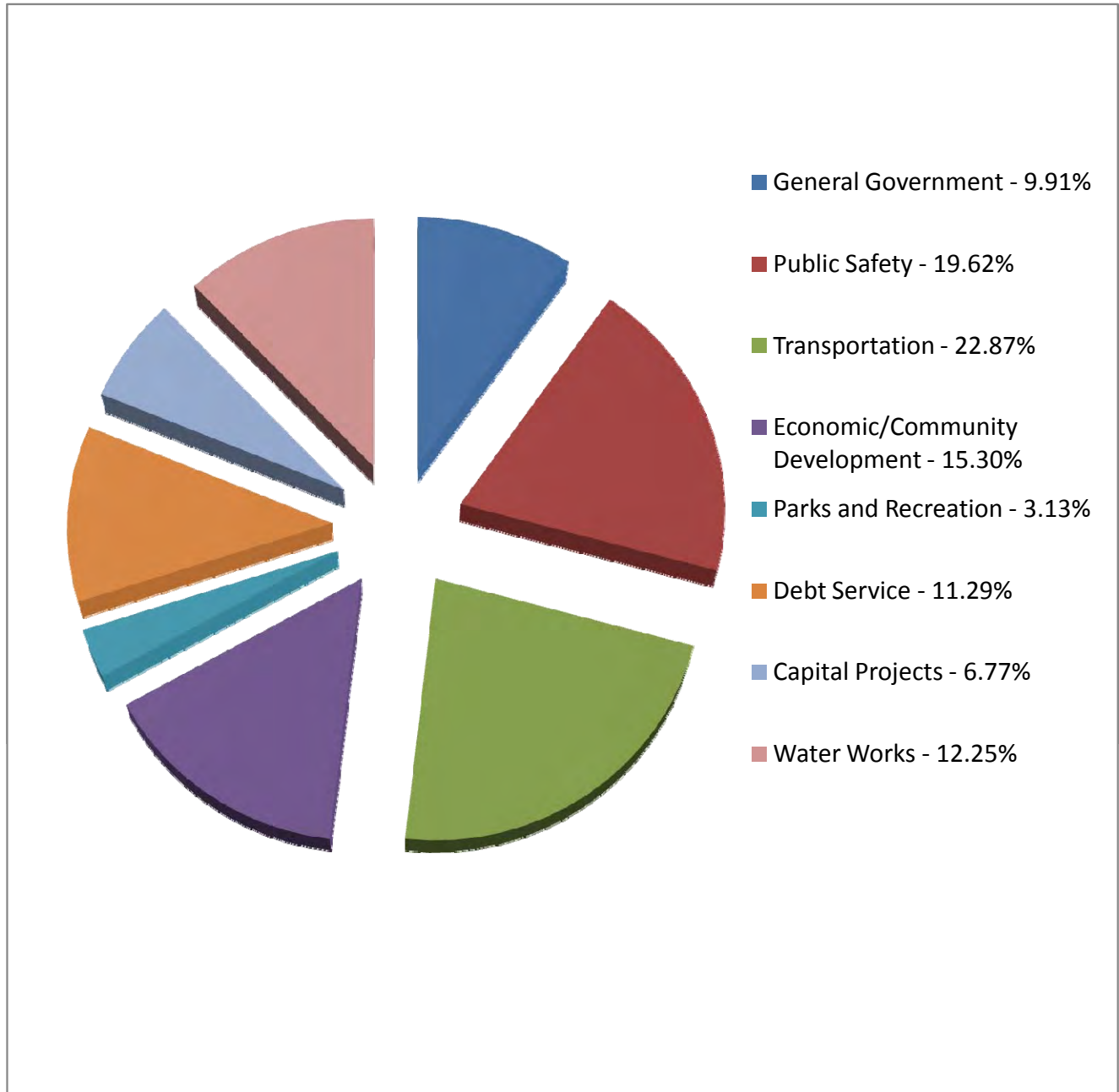
2011 Traffic Citation/ Warning Statistics

Violation Type	2006	2007	2008	2009	2010	2011
Registration	604	689	870	1030	1213	834
Operator's License	781	385	844	828	953	999
Moving	3478	3451	4027	4780	4507	4681
Equipment/ Safety Restraint	798	881	919	1451	1996	2849
Equipment	57	56	45	73	108	134
TOTAL	5718	5762	6705	8162	8777	9497

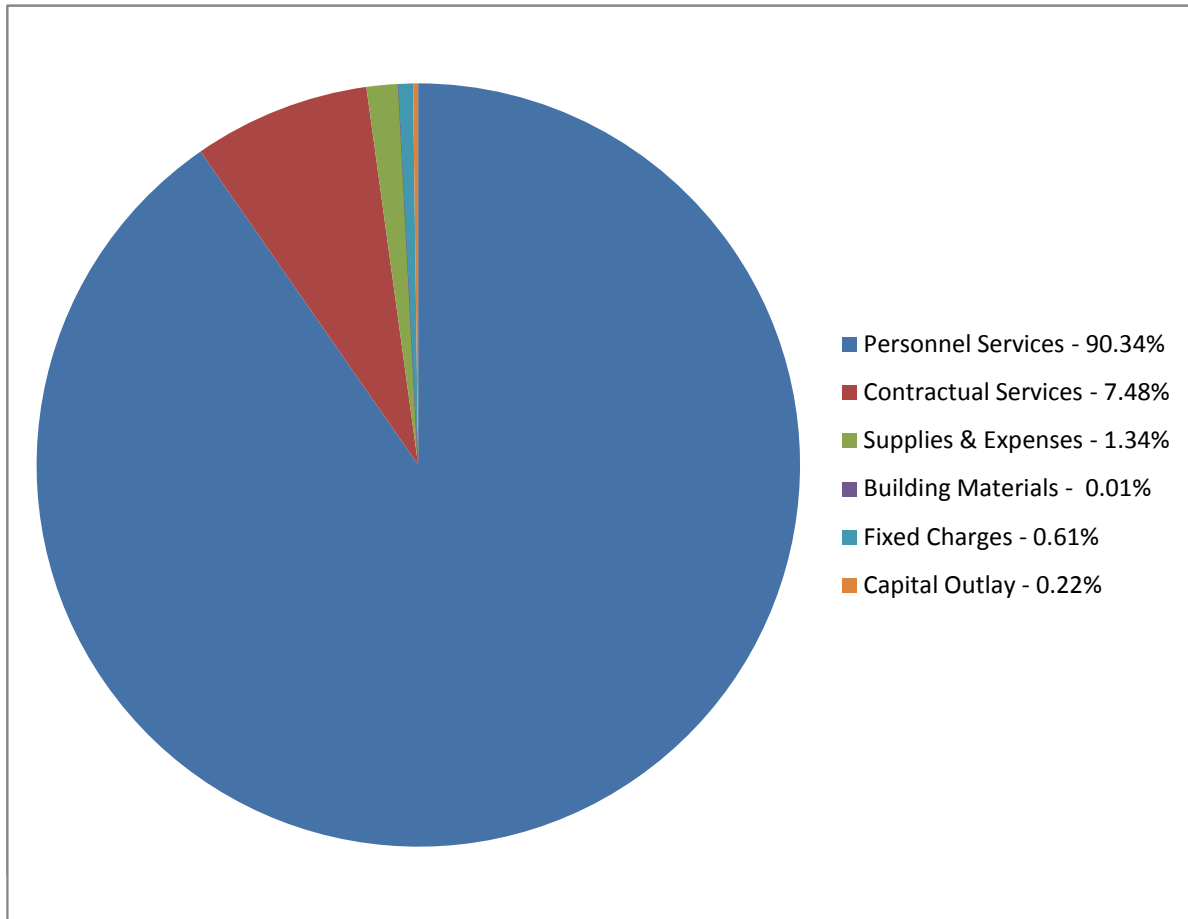
2011 Citations Versus Warnings

	Registration	Operator's License	Moving Violations	Safety Restraint/ Equipment	Equipment
Citations	46	978	2550	1229	6
Warnings	788	21	2131	1620	128

2011 City of Wausau Budgeted Expenditures by Function



2011 Police Budget Summary



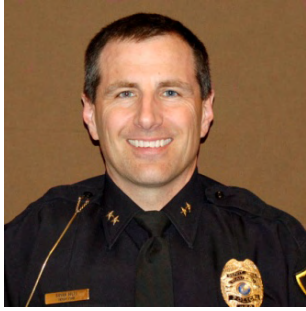
BUDGET SUMMARY

	2009 Actual	2010 Modified Budget	2010 Total Estimated	2011 Request	2011 Adopted
Personnel Services	\$7,088,974.00	\$7,516,930.00	\$7,452,671.00	\$7,787,444.00	\$7,787,444.00
Contractual Services	\$701,687.00	\$632,300.00	\$611,126.00	\$644,300.00	\$644,300.00
Supplies & Expense	\$110,869.00	\$111,838.00	\$100,153.00	\$115,200.00	\$115,200.00
Building Materials	\$216.00	\$800.00	\$584.00	\$800.00	\$800.00
Fixed Charges	\$54,332.00	\$53,000.00	\$53,000.00	\$53,000.00	\$53,000.00
Capital Outlay	\$20,487.00	\$20,800.00	\$15,328.00	\$19,000.00	\$19,000.00
Total Expenses	<u>\$7,976,565.00</u>	<u>\$8,335,668.00</u>	<u>\$8,232,862.00</u>	<u>\$8,619,744.00</u>	<u>\$8,619,744.00</u>
Intergvtl Grants/Aids	\$159,825.00	\$133,000.00	\$164,688.00	\$214,000.00	\$214,000.00
Public Charges	\$14,811.00	\$21,138.00	\$17,850.00	\$18,000.00	\$18,000.00
Intergvtl Charges	\$100,668.00	\$301,000.00	\$294,220.00	\$281,000.00	\$281,000.00
Miscellaneous	\$64,549.00	\$50,000.00	\$50,100.00	\$50,100.00	\$50,100.00
Other Financing Source:	\$45,000.00	\$35,000.00	\$35,000.00	\$35,000.00	\$35,000.00
Total Revenues	<u>\$384,853.00</u>	<u>\$540,138.00</u>	<u>\$561,858.00</u>	<u>\$598,100.00</u>	<u>\$598,100.00</u>

2011 Wausau Police Department Staff



Chief Jeffrey Hardel



Deputy Chief B. Hilts



Detective Captain G. Hagenbucher



Captain D. Dachel



Lieutenant E. Gault



Lieutenant C. Dunbar



Lieutenant J. Wadinski



Lieutenant M. Pankow



Lieutenant L. Rennie



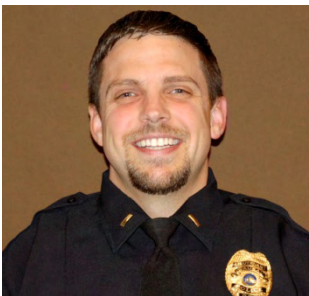
Lieutenant M. Juedes



Lieutenant W. Kolb



Lieutenant L. Heindel



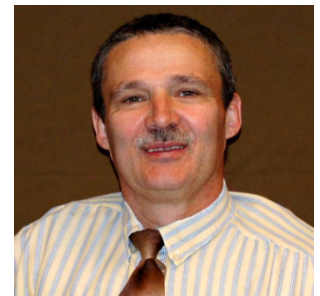
Lieutenant B. Bliven



Detective M. Wogernese



Detective P. Weckwerth



Detective T. Morris



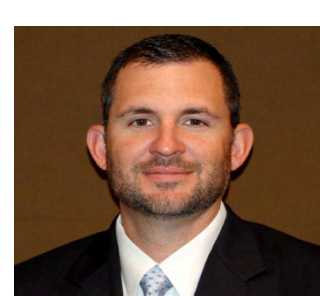
Detective J. Strobach



Detective C. Buckner



Detective K. Hansen



Detective M. Barnes



Officer T. Williams



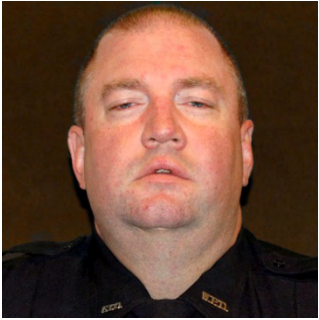
Officer M. Klein



Officer S. Kickhaver



Officer R Umlauf



Officer R. Wilcox



Officer D. Jordan



Officer M. Pilsner



Officer T. Hines



Officer M. Jaeger



Officer B. Tidquist



Officer M. Felder



Officer P. Piskoty



Officer K. Cornell



Officer D. Talg



Officer P. Yang



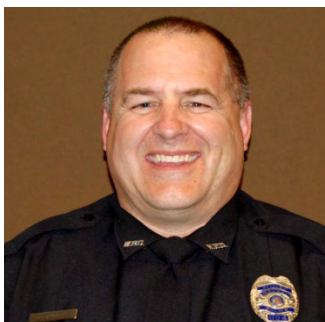
Officer M. Kurtzhals



Officer J. St. Amand



Officer T. Peterson



Officer D. Landretti



Officer J. Jurasin



Officer T. Baeten



Officer W. Taylor



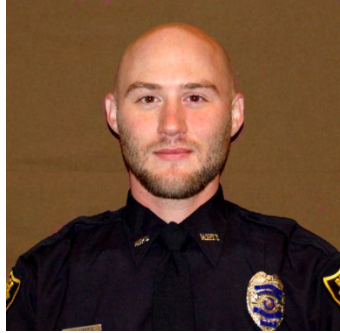
Officer M. Pauls



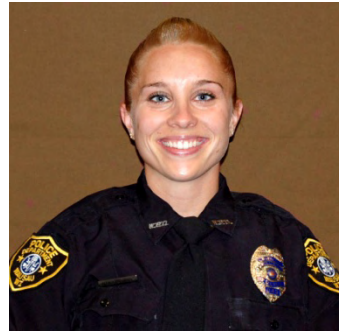
Officer D. Prokop



Officer D. Zander



Officer M. LaPorte



Officer J. Kurtzhals



Officer N. Porath



Officer A. Reince



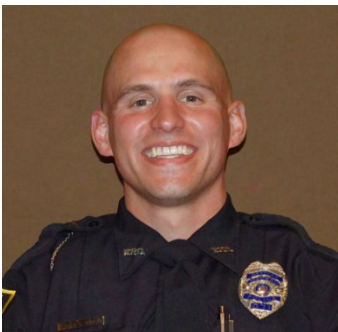
Officer B. Olson



Officer N. Cihlar



Officer N. Pekarski



Officer A. Hartwig



Officer J. Schremp



Officer M. VanLieshout



Officer S. Pierschalla



Officer J. Albee



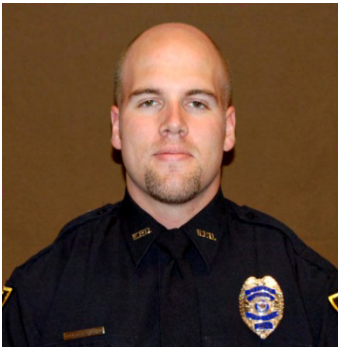
Officer J. Kindlarski



Officer H. Lee



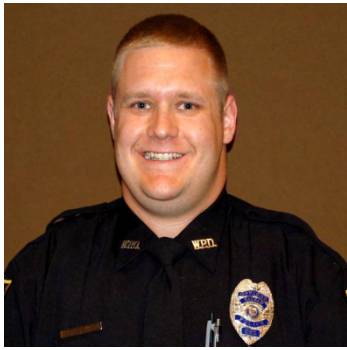
Officer K. Buchkoski



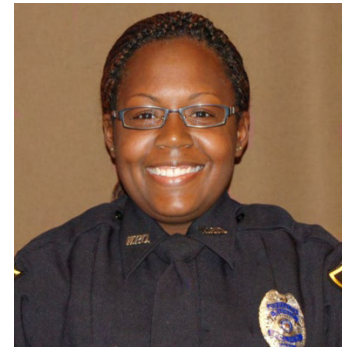
Officer B. Graham



Officer M. Krembs



Officer J. Phillips



Officer P. Pettigrew



Officer E. Lemirand



Administrative Specialist
Susan Lang



Evidence Custodian
Paul Luoma



Parking Control Specialist
Michael Kolasinski



Linda Turk



Mary Jordan



Cheryl Stieve



Kristi Schildt



Foster



Mabel



Pluto

2011 Wausau Police Department
Annual Budget Report
05/2012
Prepared by Kristi Schildt